

SENT TO COUNCIL: _____



Memorandum

TO: HONORABLE MAYOR AND
CITY COUNCIL

FROM: Scott P. Johnson

**SUBJECT: INVESTMENT REPORT FOR
THE QUARTER ENDED
SEPTEMBER 30, 2008**

DATE: November 3, 2008

Approved

Date

11/4/08

INFORMATION

Transmitted herewith is the City's investment report for the quarter ended September 30, 2008. To meet the reporting requirements set forth in the California Government Code Sections 53600 et seq. and the City of San Jose Investment Policy, an electronic version of this report will be posted on the City's website at www2.csjfinance.org and a hard copy will be on file at the City Clerk's Office located at 200 East Santa Clara Street.

This report will be distributed to the Public Safety, Finance and Strategic Support Committee (PSFSS) for discussion during its meeting on November 20, 2008 and will be agendized through the PSFSS Committee to a subsequent City Council meeting.

The total investment portfolio as of September 30, 2008 was \$1,090,734,078. This is a decrease of approximately \$269 million from June 30, 2008, primarily due to debt service requirements and prepayment of the City's retirement contributions to the two pension plans on August 1, 2008. For the quarter ended September 30, 2008, the earned interest yield was 3.89%, a decrease from the 4.05% reported for the quarter ended June 30, 2008, reflecting the reinvestment in a lower interest rate environment and of maturing securities purchased in periods of higher interest rates. The weighted average days to maturity as of September 30, 2008 was 459 days, an increase of 71 days from 388 days as of June 30, 2008 due to staff placing investments in long term securities after debt service and retirement contribution prepayment obligations were fulfilled. As of September 30, 2008, approximately 71.70% of the total portfolio consisted of U.S. Government Agency securities.

If you have any questions on this investment report, please do not hesitate to call me at 535-7000.

SCOTT P. JOHNSON
Director of Finance

Attachment

cc: Debra Figone, City Manager
Sharon Erickson, City Auditor
Richard Doyle, City Attorney



Memorandum

TO: PUBLIC SAFETY, FINANCE AND
STRATEGIC SUPPORT COMMITTEE

FROM: Scott P. Johnson

SUBJECT: FY 2008-09 FIRST QUARTER
INVESTMENT REPORT

DATE: November 3, 2008

Approved

Date

11/4/08

COUNCIL DISTRICT: City-Wide

RECOMMENDATIONS

Accept the FY 2008-09 First Quarter Investment Report.

DISCUSSION

The FY 2008-09 First Quarter Investment Report for the quarter ended September 30, 2008 was previously transmitted electronically to the City Council to meet the reporting requirements set forth in the California Government Code Sections 53600 et seq. and the City of San Jose Investment Policy. The electronic version of this report can also be found on the City's website at www2.csjfinance.org and a hard copy filed in the City Clerk's Office located at 200 East Santa Clara Street.

Attached is a copy of the FY 2008-09 First Quarter Investment Report focusing on:

- Quarterly Portfolio Statistics and Performance
- Investment Strategy
- Policy Reporting Requirements
- Significant Developments

Staff from the Finance Department will be available to answer questions at the Public Safety, Finance and Strategic Support Committee meeting on November 20, 2008.

SCOTT P. JOHNSON
Director of Finance

Attachment

**INVESTMENT REPORT FOR
THE QUARTER ENDED
SEPTEMBER 30, 2008**



Prepared by
Finance Department
Treasury Division

Scott P. Johnson
Director of Finance

**Investment Report for
The Quarter Ended
September 30, 2008
City of San José
Department of Finance
Treasury Division**

SCOTT P. JOHNSON
Director of Finance

JULIA H. COOPER
Deputy Director of Finance

KATHY JACKSON
Principal Investment Officer

Investment Staff

Arn Andrews, Investment Officer
Nancy Tran, Financial Analyst
Maria Guerrero, Principal Account Clerk
Uyen Le, Senior Account Clerk

Special Assistance by

Inderdeep Dhillon, Principal Accountant
Bhavana Menghrajani, Accountant
Michele Delgado, Office Specialist II
Tim Roberts, Account Clerk II

**CITY OF SAN JOSE
INVESTMENT REPORT FOR
THE QUARTER ENDED SEPTEMBER 30, 2008
TABLE OF CONTENTS**

Investment Report	1
A. PORTFOLIO STATISTICS	A-1
B. EARNED INTEREST SUMMARY	
Investment Pool Interest Earnings	B-1
Summary	B-8
Special Funds and Summary	B-9
Combined Summary	B-14
C. TIME DEPOSIT BANK DISTRIBUTION REPORT	C-1
D. MARKET VALUE OF PORTFOLIO	D-1
E. DETAIL OF INVESTMENT ACTIVITY	
Investment Pool Interest Earnings	E-1
Sales	E-2
Maturities	E-2
Amortization	E-4
Purchases	E-6
Summary	E-10
Special Funds and Summary	E-11
Combined Summary	E-13
Broker Distribution Report	E-14

October 31, 2008

HONORABLE MAYOR and CITY COUNCIL

INVESTMENT REPORT FOR THE QUARTER ENDED SEPTEMBER 30, 2008

I am pleased to present this report of investment activity for the quarter ended September 30, 2008 in compliance with the reporting requirements as set forth in the California Government Code Sections 53600 et seq. and the City of San José Investment Policy. The information presented in the table below highlights the investment activity for the quarter ended September 30, 2008 as well as provides a comparison to the quarters ended June 30, 2008 and September 30, 2007.

The report presents information in the following major categories: Portfolio Statistics, Portfolio Performance, Compliance Reporting Requirements, Investment Trading Activity, and Investment Strategy pursuant to the Investment Policy.

INVESTMENT SUMMARY			
For the Quarter Ended	September 30, 2008	June 30, 2008	September 30, 2007
<i>Total Portfolio</i>			
Portfolio Value ^{(1) (2)(3)}	\$1,090,734,077.68	\$1,359,329,345.59	\$1,083,588,155.17
Earned Interest Yield	3.89%	4.05%	4.71%
Dollar-weighted average yield			
Purchases	2.26%	2.09%	5.08%
Maturities	2.10%	2.09%	5.05%
Called Securities	5.45%	4.01%	6.00%
Portfolio Effective Yield	3.93%	3.84%	4.72%
Dollar-weighted avg. days to maturity	459	388	577
<i>Portfolio Fund 1</i>			
Portfolio Value ⁽¹⁾	\$974,016,556.93	\$1,211,617,440.08	\$1,049,549,920.18
Earned Interest Yield	4.02%	4.18%	4.70%
Dollar-weighted average yield			
Purchases	2.05%	2.09%	5.10%
Maturities	2.10%	2.09%	5.05%
Called Securities	5.45%	4.01%	6.00%
Portfolio Effective Yield	4.07%	3.94%	4.72%
Dollar-weighted avg. days to maturity	513	434	593

¹Reflects book value (principal plus any purchased interest costs) of investments.

²Total excludes \$911,225,722 in bond proceeds held by trustees for the City of San José (\$908,200,010) and the Redevelopment Agency (\$3,025,712).

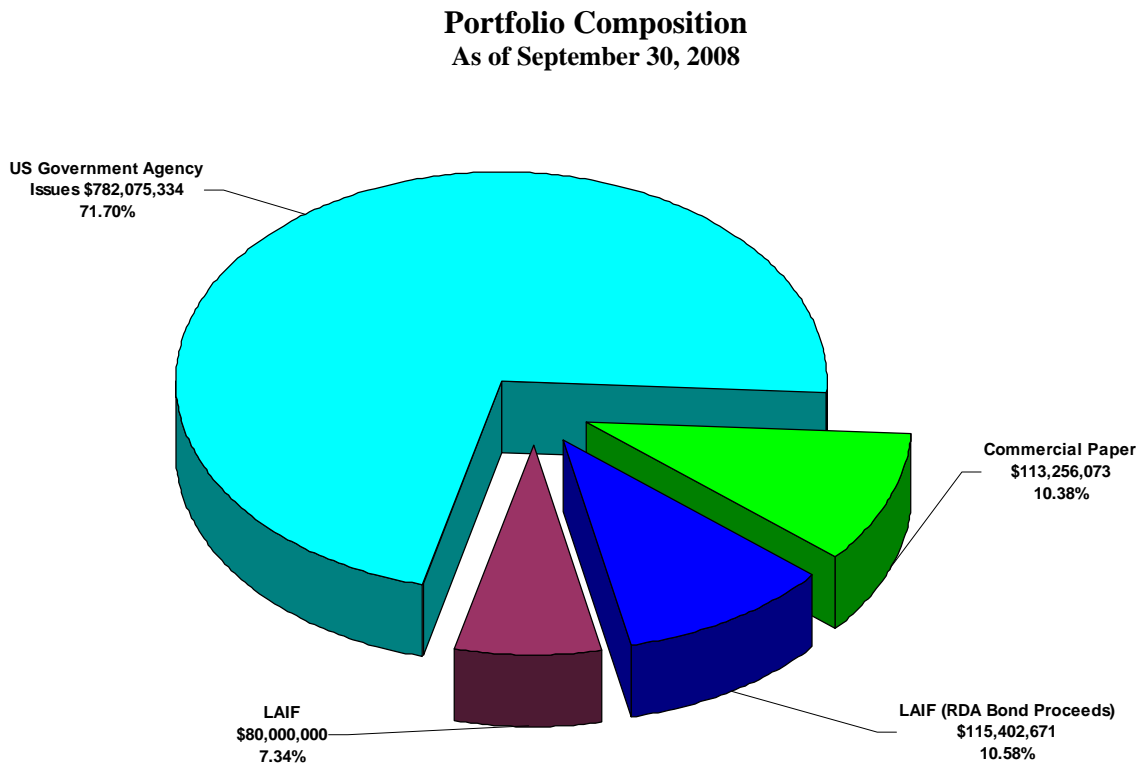
³Total includes \$115.4 million bond proceeds held at the Local Agency Investment Fund for RDA Series 2007B.

PORTFOLIO STATISTICS

The Investment Policy outlines the information contained in the Portfolio Statistical section of the Quarterly Investment Report. Detailed information is found in the attachments to the Quarterly Report (see table of contents), while summaries in graphic form are provided in this transmittal letter.

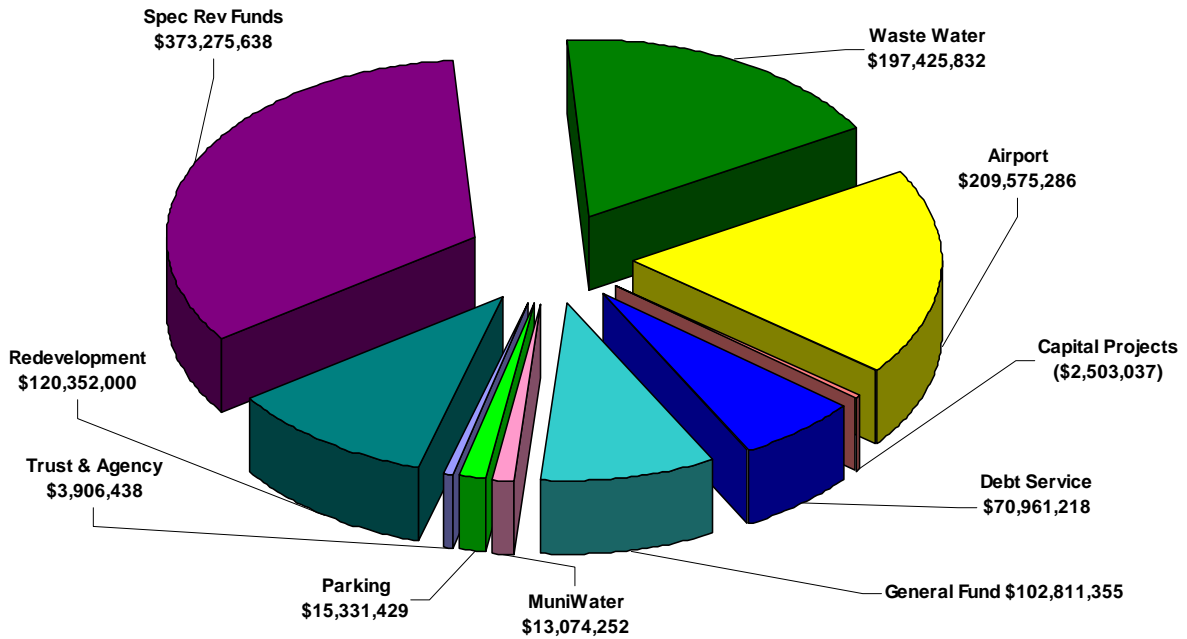
Portfolio Composition

The graphs below provide snapshots of the City's total investment portfolio as of September 30, 2008. The total portfolio size was \$1,090,734,078. The first graph shows the portfolio composition by investment type and the following two graphs show the portfolio's cash balance by fund type.



The graph below reflects the reconciliation of total balances reported by the investment program's investment accounting system compared to the City's Financial Management System (FMS).

Cash Balances by Fund Type
 As of September 30, 2008

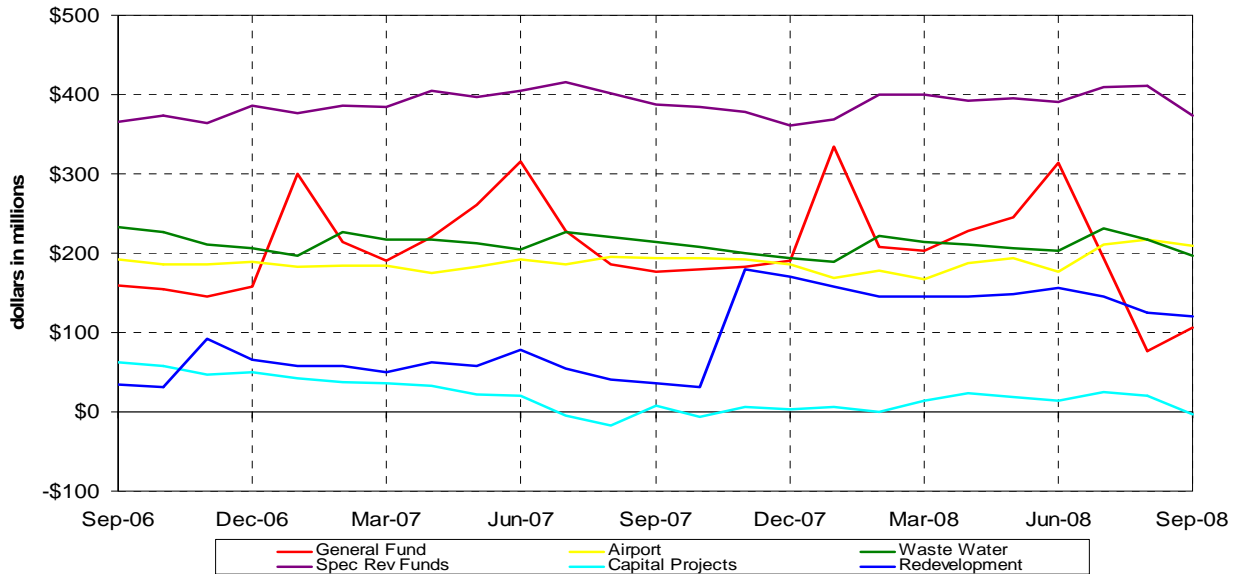


Total Portfolio	\$1,090,734,078
Deposit-in-Transit, Outstanding Checks *	<u>13,476,333</u>
Cash Balance Total	\$1,104,210,411

**Reflects timing differences between when deposits are made and accounting for proceeds in FMS or when checks are written and not yet cashed by the receiving party.*

The graph below compares the monthly total balances of selected City funds as reported by FMS.

Monthly Comparison of Balances by Fund Type
As of September 30, 2008



Negative Cash Balances

The Capital Projects fund balance dipped below zero this month due to the timing of reimbursements from various bond funds held by trustees. The negative balances are caused by a time lag between when payments are made through the investment pool, and receipt of funds for the related reimbursement for these capital costs from trustees. Finance has been working with departments to shorten the time lag between capital project expenditures processed through the pooled investment portfolio by capital project managers and reimbursement requests. The City received approximately \$18.9 million in reimbursements during the week of October 20th from bond funds held by trustees.

Redevelopment Agency Portion of Portfolio

As of September 30, 2008, the Redevelopment Agency portion of the total portfolio was \$120.3 million, which represents a decrease of \$36.3 million compared to the amount reported as of June 30, 2008. This net decrease was primarily due to the payment of debt service during the quarter. Total interest earnings from funds invested with the City Pool during the quarter ended September 30, 2008 for the Redevelopment Agency were \$1.17 million

PORTFOLIO PERFORMANCE

Portfolio performance is provided in more detail in the attachments to the report. The summary information provided below includes the total portfolio income recognized for the last quarter as compared to the prior quarter and the same quarter one year ago. Other graphs in this section include yield and maturity trends over the last two years and comparisons of weighted average yields on new purchases.

TOTAL PORTFOLIO INCOME RECOGNIZED

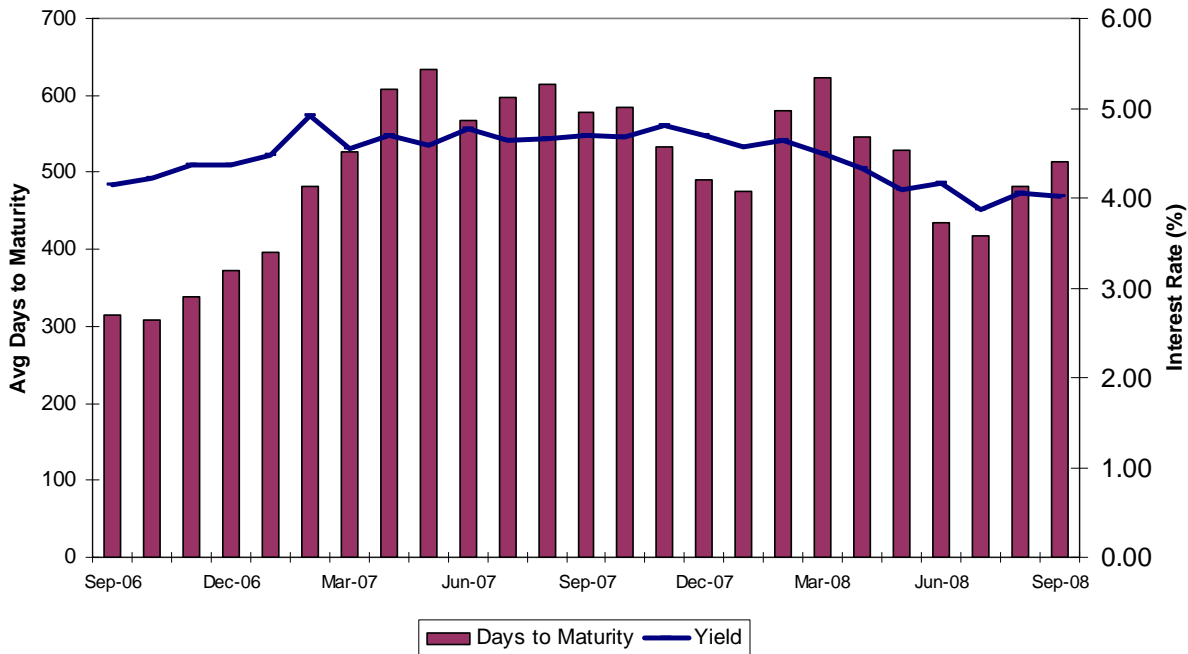
Accrual Basis

Total Portfolio	<u>September 30, 2008</u>	<u>June 30, 2008</u>	<u>September 30, 2007</u>
<u>Quarter-End</u>			
Net interest earnings	\$11,781,046	\$12,811,673	\$13,740,597
Net gains (losses) from sales	<u>0</u>	<u>0</u>	<u>0</u>
Net total income recognized	\$11,781,046	\$12,811,673	\$13,740,597
<u>Fiscal Year-to-Date</u>			
Net interest earnings	\$11,781,046	\$53,686,467	\$13,740,597
Net gains (losses) from sales	<u>0</u>	<u>0</u>	<u>0</u>
Net total income recognized	\$11,781,046	\$53,686,467	\$13,740,597

Yield and Maturity Trend

The following graph illustrates the historical monthly dollar-weighted average days to maturity of Portfolio 1 for each month for the past two years (bar graph) along with the yield trend in Portfolio 1 (line graph). The average days to maturity has increased from the quarter ended June 30 at 434 to the quarter ended September 30 at 513 which is representative of staff's placing investments in long term securities after debt service and retirement contribution prepayment obligations were fulfilled.

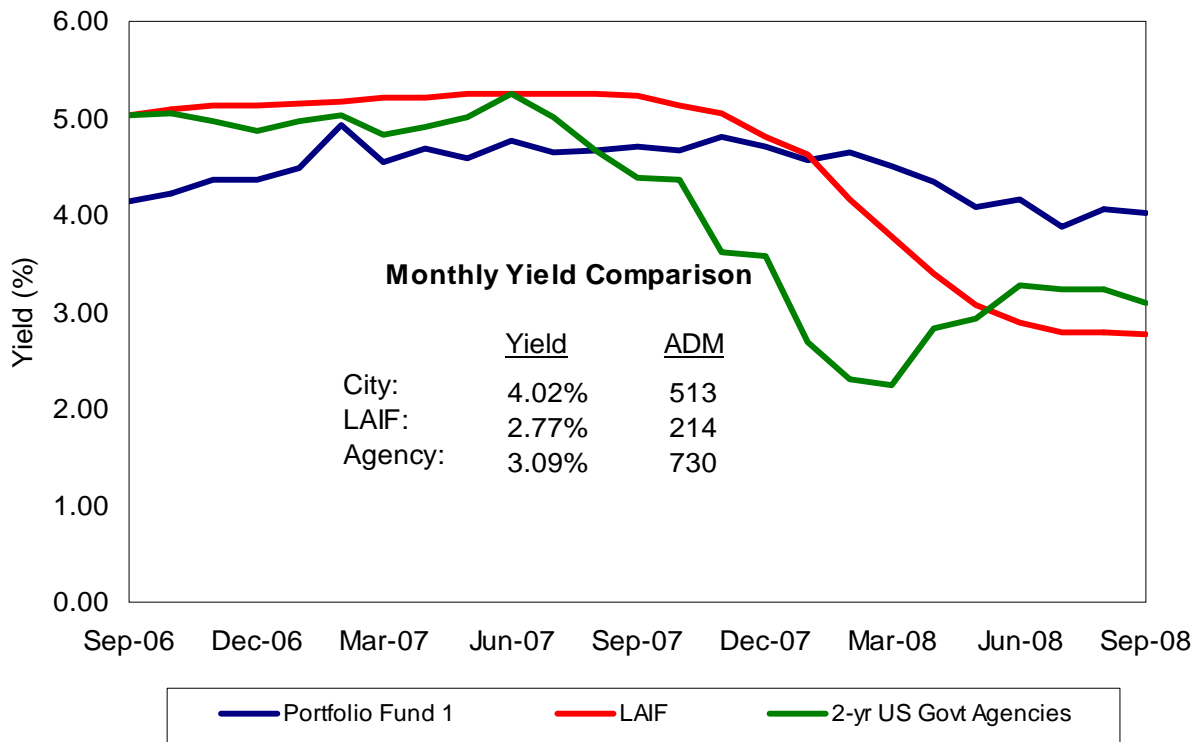
**Yield and Maturity Trends
Portfolio Fund 1
As of September 30, 2008**



Benchmark Comparison

The following graph compares the monthly earned interest yield of the City’s Portfolio Fund 1 with the monthly average yields for the same period of the State of California Local Agency Investment Fund (LAIF) and of the two-year U.S. Government Agency securities from September 2006 through September 2008.

Monthly Benchmark Comparisons
 As of September 30, 2008



The two-year US Government Agency securities and the Local Agency Investment Fund yield are the closest suitable benchmarks for the City’s Portfolio Fund 1 since the weighted average maturity for the portfolio is in between the two at 513 days. The two-year agencies yield declined during the month of September, and remained below the City’s portfolio yield. The FOMC kept Fed Funds steady at their regularly scheduled meetings on August 5 and September 16, at 2.00%. The Federal Funds target rate has since been lowered by 50 basis points to 1.50% on October 8 and by an additional 50 basis points to 1.00% on October 29.

The Portfolio Fund 1 performance decreased slightly and LAIF’s yield continued to decline. LAIF’s average days-to-maturity is 214 days versus the City’s 513 days. The market is continuing to see a “normal” upward sloping yield curve, therefore LAIF’s shorter average life will continue to cause their yield to decline more rapidly, however LAIF’s yield should react more quickly when interest rates increase.

Unrealized Losses and Gains

As shown in the Investment Summary table on page 1 of this report, the total portfolio size as of September 30, 2008 was \$1.09 billion. The table below illustrates the unrealized gains or losses on the portfolio when comparing the portfolio’s market value to both its original cost and amortized cost.

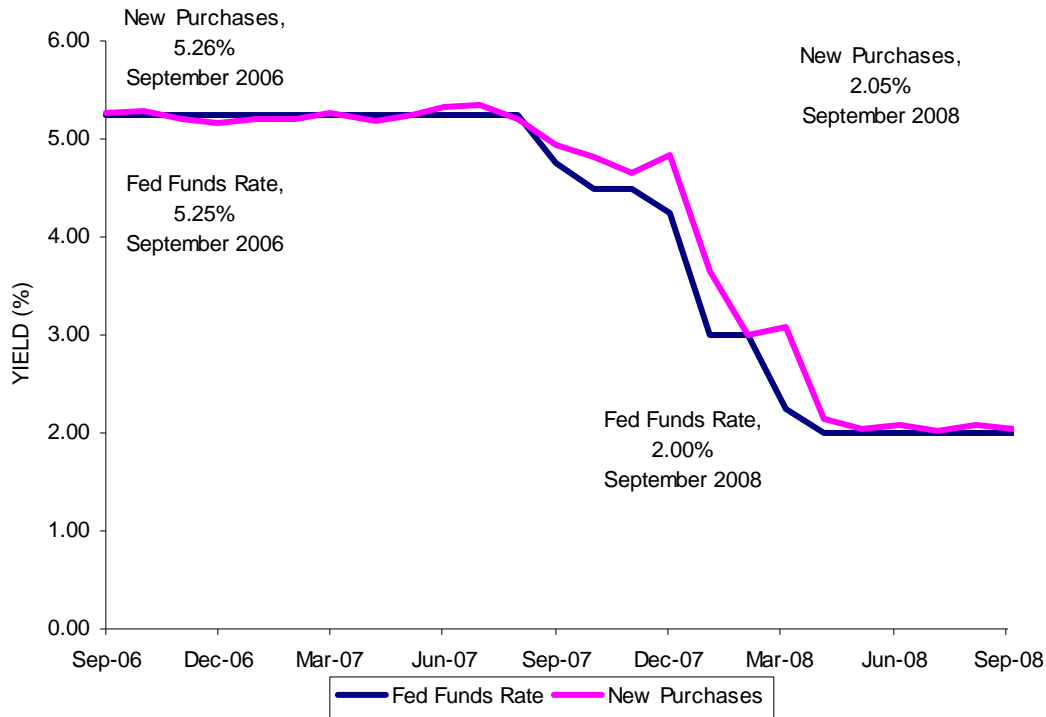
<u>UNREALIZED GAINS & LOSSES</u>			
<u>Cash Basis</u>			
Market Value	\$1,101,364,242	Market Value	\$1,101,364,242
Original Cost	(1,090,734,078)	Amortized Cost	(1,092,583,373)
Unrealized Gain (Loss)	\$ 10,630,164	Unrealized Gain (Loss)	\$ 8,780,869

The City’s investment practice, per the Investment Policy, is to hold securities to the maturity dates, with exceptions as noted in the Policy. The unrealized gains noted above are “paper gains” where there is an inverse relationship between the general changes in market interest rates to the value of investment securities. As the general market interest rates decrease, the value of the City’s investments increase as a result of the higher interest yields that these investments hold compared to market interest rates.

Earned Interest Yield – The total investment portfolio earned interest yield for the quarter ended September 30, 2008 was 3.89%. The yield declined from 4.05% from the quarter ending June 30, 2008. The Federal Open Market Committee kept the Fed Funds target rate at 2.00% at their regularly scheduled meetings on August 5 and September 16. Since quarter-end, the Fed Funds target rate was decreased by 50 basis points to 1.50% at an unscheduled meeting on October 8 and another 50 basis points to 1.00% on October 29 at their regularly scheduled meeting. Based on the current economic environment, staff anticipates that maturing securities this quarter will be replaced at yields averaging between 2 and 4 percent and result in a slightly lower total portfolio earned interest yield continuing through most, if not all, of the fiscal year.

Performance Measurement – New Purchases verses Fed Funds Rate – The graph below compares the total portfolio’s weighted average yield on new purchases made during each month over the past two years to the average monthly federal funds rate for the same period. Funds on deposit in a bank’s reserve account are referred to as federal funds, and the rate of interest paid on overnight loans of federal funds is called the federal funds rate. This is the rate at which all money market interest rates are anchored.

Performance Measurement – New Purchases vs. Fed Funds
September 2006 through September 2008



COMPLIANCE REPORTING REQUIREMENTS

As part of the reporting process as outlined in the Investment Policy, there are several compliance reporting requirements that are to be included in the quarterly report. These requirements include a statement of the cash management projection, statement of compliance with the policy, and comparisons of budget investment earnings to actual earnings.

Cash Management Projection

Based on the Finance Department’s cash flow projection of September 30, 2008, the total portfolio is expected to have approximately \$622 million in maturities and \$604 million in revenues during the next six months, a total of \$1.226 billion in available funds. This is sufficient to cover the projected City expenditures during the next six months of approximately \$843 million.

Statement of Compliance with the Policy

There were no exceptions or violations outstanding for the quarter ended September 30, 2008. The investment portfolio meets the requirements of the City’s investment policy and the California Government Code section 53601.

Comparison of Portfolio Investment Earnings to FY 2008-09 Budget

Below is a comparison of actual investment earnings on an accrual basis to the fiscal year 2008-09 budget. Quarterly budgeted earnings apportionments for the City funds are based upon historical cash balance averages and an assumed average interest rate yield of 3.41% for the fiscal year. On October 8 the Finance Department provided a revised interest rate assumption of 3.22% for FY 2008-09 earnings based on current market conditions and expectations for the balance of the fiscal year. This revised earnings rate will be reflected in future Investment Reports, after changes are approved by the City Council. As reported in the Notes to the General Purpose Financial Statements in the City's Comprehensive Annual Financial Report (CAFR), annual budgets are not prepared for some funds (for example, Nonexpendable Trust Funds, Repair and Demolition Fund, etc). The City's budgets for the General Fund, Special Funds and Capital Improvement Programs reflect annualized investment income earnings of \$8.014 million. The following schedule reflects the net investment earnings of only the budgeted City funds participating in Investment Portfolio Fund 1.

The Redevelopment Agency projects annualized investment income earnings of \$3.97 million for Fiscal Year 2008-09. This represents interest earned on the Agency's funds participating in the City's investment program and is exclusive of interest earned on funds held in escrow or by fiscal agents and on developers' loans¹. The amounts shown for the Redevelopment Agency's quarterly and fiscal year-to-date budgeted investment earnings are based on the Agency's annual budget for its participation in the City's investment program, apportioned on a pro-rata basis for the quarter and year-to-date, respectively.

BUDGET COMPARISON			
<u>Net Investment Earnings</u>	<u>Yield</u>	<u>General Fund</u>	<u>Redev. Agency</u>
<i>Quarter-end September 2008</i>			
Budget	3.41%	1,896,579	1,109,000
Actual ^(a)	<u>3.57%</u>	<u>1,392,377</u>	<u>1,020,932</u>
Variance	0.16%	(504,202) ^(b)	88,068
<i>Fiscal Year to Date</i>			
Budget	3.41%	1,896,579	1,109,000
Actual ^(a)	<u>3.57</u>	<u>1,392,377</u>	<u>1,020,932</u>
Variance	0.16%	(504,202) ^(b)	88,068
<i>(a) Note: Reflects net investment yield which is calculated based on the earned interest yield less costs to administer the investment program and adjustment for funds with negative cash balances at month end.</i>			
<i>(b) Despite the increase in actual yield vs. budget, the interest income received was less than budgeted due to a decrease in the General Fund balance because of timing issues in July and the Retirement Prefunding payout of \$119 million in August.</i>			

¹ For the Agency's total budgeted investment income earnings for Fiscal Year 2008-09, please refer to its proposed budget at <http://www.sjredevelopment.org/Finance/financialinfo.htm>

INVESTMENT TRADING ACTIVITY

Attachment E provides a detailed summary of the Investment Activities during the quarter including any realized gains or losses from interest received on trading activity. Since the City is currently not involved in active trading, this reporting only occurs when a security must be sold prior to maturity as defined in Section 4.0(B) of the Investment Policy.

Future Commitments -- As of quarter-end September 30, 2008, the City had no obligations to buy or sell securities, no outstanding debt to security brokers, and no commitments to participate in securities trading.

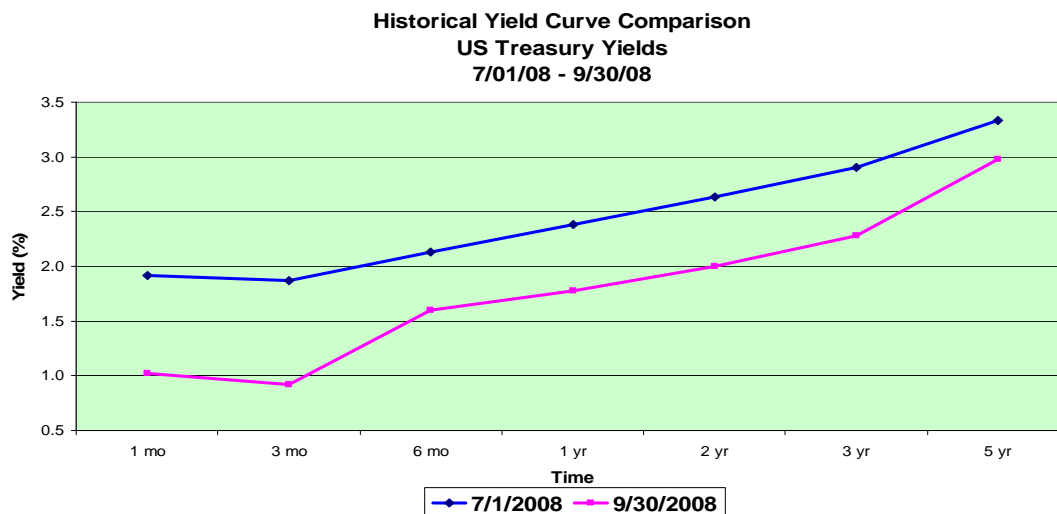
Executed Reverse Repurchase Agreements -- No reverse repurchase agreements were executed this quarter.

Restructuring-- No restructuring transactions were executed during the quarter ended September 30, 2008.

Municipal Bonds -- No municipal bonds were purchased during the quarter ended September 30, 2008.

INVESTMENT STRATEGY

The following chart is of the Treasury yield curve as of September 30, 2008 compared to yields as of July 1, 2008. Short-term yields dip due to the uncertainty in the market. The Federal Open Market Committee maintained the Federal Funds target rate at 2.00% at their regularly scheduled meetings on August 5 and September 16, 2008 meeting. The Federal Funds target rate has since been lowered by 50 basis points to 1.50% on October 8 and by an additional 50 basis points to 1.00% on October 29. The City's investment strategy will continue to include a matching of maturities to cash flow and a laddered portfolio approach while looking for value in these areas and keeping within the guidelines of the City's investment policy.



Source: US Department of Treasury

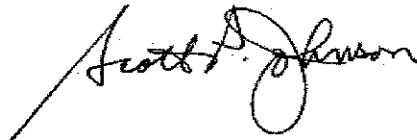
SIGNIFICANT DEVELOPMENTS

No significant developments to report during the quarter ended September 30, 2008.

CONCLUSION

The total investment portfolio as of September 30, 2008 was \$1,090,734,078. This is a decrease of approximately \$269 million from June 30, 2008, primarily due to debt service requirements and prepayment of the City's retirement contributions to the two pension plans on August 1, 2008. For the quarter ended September 30, 2008, the total portfolio earned interest yield was 3.89%, a decrease from the 4.05% reported for the quarter ended June 30, 2008, reflecting the reinvestment in a lower interest rate environment and of maturing securities purchased in periods of higher interest rates. The weighted average days to maturity as of September 30, 2008 was 459 days, an increase of 71 days from 388 days as of June 30, 2008 due to staff placing investments in long term securities after debt service and retirement contribution prepayment obligations were fulfilled. As of September 30, 2008, approximately 71.70% of the total portfolio consisted of U.S. Federal Agency securities.

Respectfully submitted,

A handwritten signature in black ink, appearing to read "Scott P. Johnson". The signature is written in a cursive style with a long, sweeping underline that extends to the left.

SCOTT P. JOHNSON
Director of Finance

SECTION A

PORTFOLIO STATISTICS

Section 1: All Funds Summary

Summarizes daily average investment balances for each portion of the portfolio, the daily uninvested average in the general account, and the average total holdings per day.

Section 2: Statistics

TOTAL INTEREST RECEIVED IN THIS PERIOD: Represents the cash basis receipts for the report period. Includes the total actual interest receipts less accrued interest purchased (if not offset by prior coupon payment) and further modified by the gain or loss amounts incurred through sales during the period.

TOTAL NET EARNINGS THIS PERIOD: Represents the accrued net earnings for the period. Encompasses the net of interest accrual, premium amortization, discount accretion, and gains/losses from sales.

AVERAGE DAILY PORTFOLIO BALANCE: The sum of daily investment balances (Cost adjusted by amortization/accretion postings) during the actual period, including weekends and holidays, divided by the number of days in the reporting period.

EARNED INTEREST YIELD THIS PERIOD: The total net accrued earnings this period, divided by the number of days within the report period, then multiplied by 365 days, and divided by the average daily investment balance.

END OF PERIOD PORTFOLIO BALANCE: The sum of all investment balances (adjusted cost basis) which are active at the end of the report.

WEIGHTED AVERAGE YIELD AT END OF PERIOD: The sum of all end of period investment balances, each multiplied by its ending sub-period yield, then divided by the sum of the end of period investment balances (current book value or adjusted costs basis).

WEIGHTED AVERAGE DAYS TO MATURITY: The sum of all investment cost balances for securities active at the end of the report period, each multiplied by the days to maturity, then divided by total investment costs.

WEIGHTED AVERAGE DAYS TO CALL: The sum of all investment cost balances for securities active at the end of the report period, each multiplied by the days to the call date or if no call date, to the maturity date, then divided by total investment cost.

Section 3: Reconciliation to previous month's investment balances.



CITY OF SAN JOSE, CALIFORNIA
 CASH MANAGEMENT PROGRAM REPORT TO THE CITY COUNCIL
 FOR THE PERIOD 07/01/08 THROUGH 09/30/08

ON A DAILY AVERAGE BASIS FOR THIS PERIOD, THE TEMPORARILY IDLE CASH BALANCES OF ALL OF THE FUNDS OF THE CITY OF SAN JOSE WERE PLACED AS FOLLOWS:

ALL FUNDS SUMMARY

INVESTMENT TYPE	DAILY AVERAGE	INVESTMENT EARNINGS AND RECEIPTS		
		PERCENT	AMOUNT	INTEREST RECEIVED
BANKERS ACCEPTANCES	.00	.00	.00	.00
FEDERAL AGENCY SECURITIES	803,094,272.10	4.55	9,205,378.72	11,363,524.96
CERTIFICATES OF DEPOSIT	.00	.00	.00	.00
U.S. TREASURY BILLS, BONDS AND NOTES	.00	.00	.00	.00
REPURCHASE AGREEMENTS	.00	.00	.00	.00
STATE POOL, PASSBOOK & MONEY MKT ACCTS	208,693,565.32	2.77	1,456,655.19	1,458,597.61
COMMERCIAL PAPER	178,680,375.58	2.32	1,044,357.24	1,303,851.76
NEGOTIABLE CD'S	12,326,086.96	2.40	74,655.00	99,540.00
MEDIUM TERM CORPORATE NOTES	.00	.00	.00	.00
INVESTMENTS SUB-TOTAL	1,202,794,299.96	3.89	11,781,046.15	14,225,514.33
ACTIVE BANK BALANCES	2,139,114.91			
TEMPORARILY IDLE CASH TOTAL	1,204,933,414.87	3.88	11,781,046.15	14,225,514.33

THE PAGES WHICH FOLLOW PROVIDE INFORMATION IN GREATER DETAIL UPON WHICH THE ALL FUNDS SUMMARY, ABOVE, HAS BEEN DEVELOPED. THIS REPORT PROVIDES A DETAILED LISTING OF INVESTMENTS BY INVESTMENT TYPE, AS WELL AS THE AMOUNTS EARNED AND/OR RECEIVED FROM EACH INVESTMENT.

CITY OF SAN JOSE
 TREASURY DIVISION
 PORTFOLIO STATISTICS
 7/01/08 THROUGH 9/30/09
 ALL FUNDS

	FIXED		EQUITIES		TOTAL
	ASSETS	LIABILITIES	ASSETS	LIABILITIES	
TOTAL INCOME RECEIVED IN THIS PERIOD:	14,225,514.33	.00	.00	.00	14,225,514.33
TOTAL NET EARNINGS THIS PERIOD:	11,781,046.15	.00	.00	.00	11,781,046.15
AVERAGE DAILY PORTFOLIO BALANCE:	1,202,794,299.96	.00	.00	.00	1,202,794,299.96
EARNED INCOME YIELD THIS PERIOD:	3.886	.000	.000	.000	3.886
END OF PERIOD PORTFOLIO BALANCE:	1,090,734,077.68	.00	.00	.00	1,090,734,077.68
CURRENT AMORTIZED BOOK VALUE:	1,092,583,372.68	.00	.00	.00	1,092,583,372.68
WEIGHTED AVERAGE YIELD AT END OF PERIOD:	3.930	.000	.000	.000	3.930
WEIGHTED AVERAGE DAYS TO MATURITY:	458.65	.00	N/A	N/A	N/A
WEIGHTED AVERAGE DAYS TO CALL:	259.76	.00	N/A	N/A	N/A
NET PORTFOLIO YIELD, 365-DAY BASIS:					3.886

SAN JOSE CITY SUMMARY

	BALANCE 9/1/2008	SALES OR MATURITIES	ADDITIONS	BALANCE 9/30/2008
Time Deposits	0.00	0.00	0.00	0.00
UST Bills, Notes & Bonds	0.00	0.00	0.00	0.00
TB/N Stripped Coupon	0.00	0.00	0.00	0.00
Federal Agency Securities	778,268,626.63	268,761,745.02	272,568,452.79	782,075,334.40
Bankers Acceptance	0.00	0.00	0.00	0.00
Repurchase Agreements	0.00	0.00	0.00	0.00
Negotiable CD's	0.00	0.00	0.00	0.00
Commercial Paper/Discount	144,285,374.72	1,230,759,564.73	1,199,730,261.96	113,256,071.95
Corporate Medium Term Notes	0.00	0.00	0.00	0.00
Money Market Mutual Fund	1,093,715.47	1,095,715.68	2,000.21	0.00
State Pool	205,402,671.33	10,000,000.00	0.00	195,402,671.33
Total	1,129,050,388.15	1,510,617,025.43	1,472,300,714.96	1,090,734,077.68
			[]	
			Net Change =	-38,316,310.47
Portfolio Turnover Ratio:			$\frac{\text{Purchase + Sales/Maturities (at cost)}}{\text{Average Daily Portfolio Balance}}$	

September 2008 TURNOVER RATIO:

2.7003531499

times

AVERAGE DAILY PORTFOLIO BALANCE (FS)

1,104,639,865.55

**CITY OF SAN JOSE
TREASURY DIVISION
SERIES II PORTFOLIO STATISTICS**

A-3

07/01/08 - 09/30/08

Fund & Description		Total Income Received	Total Net Earnings	Average Daily Portfolio Balance	Earned Income Yield This Period	End of Period Portfolio Balance	Current Amortized Book Value	Weighted Average Yield at End of Period	Weighted Average Days to Maturity
1	Investment Fund	13,325,970.88	10,881,213.60	1,073,820,648.68	4.020	974,016,556.93	975,860,820.67	4.020	513
8	Evergreen Creek Reassessment Revenue Bonds	268.40	452.47	70,662.18	2.540	69,495.53	69,736.80	2.880	49
33	94A	238.58	411.77	64,129.75	2.547	64,531.57	64,755.60	2.880	49
34	CSJ/CSC Jt Pwr	3,046.65	4,903.12	831,134.69	2.340	832,257.51	836,000.00	2.414	1
40	97 Community Facility Dist 1	2,005.34	2,023.11	349,807.67	2.295	348,564.81	349,388.28	2.464	27
46	Airport C/P Series B	1,942.40	0.00	0.00	0.000	0.00	0.00	0.000	0
54	RDA Series 2007	892,042.08	892,042.08	127,657,917.00	2.772	115,402,671.33	115,402,671.33	2.772	1
	TOTAL	14,225,514.33 *	11,781,046.15 *	1,202,794,299.96	3.886	1,090,734,077.68	1,092,583,372.68	3.930	458.65

* Reconciled to Page A-1 Cash Management Program, Page A-2 Consolidated Portfolio Statistics, and Page E-37 Detailed Transaction Report

SECTION B

EARNED INTEREST SUMMARY

The Earned Interest Summary summarizes portfolio investment activity, cash interest receipts, and accrual-based earnings for all investments active during any part of the report period. Types of investments are described as follows:

TIME DEPOSITS: A deposit with a California bank or savings and loan association for a specific amount and with a specific maturity date and interest rate. Deposits of up to \$100,000 are insured by FDIC or FSLIC. Deposits over \$100,000 are collateralized above the insurance with either government securities (at 110% of par value), first trust deeds (at 150% of par value), or letters of credit (at 105% of par value).

GOVERNMENT SECURITIES: An issue of the U.S. Treasury. May include U.S.T. Bills (up to 1 year maturity), U.S.T. Notes (maturity of up to 10 years), and U.S.T. Bonds (maturity of longer than 10 years from date of issue). "Stripped Coupons" are coupons that have been physically separated from the original bond before being sold. The purchaser of the coupons in effect is buying the interest that will be paid on the underlying bond on a certain date.

FEDERAL AGENCIES: Any issue of various Federal Agencies, such as Federal National Mortgage Association, Federal Home Loan Bank, Federal Home Loan Mortgage Corporation, Federal Farm Credit Banks, Government National Mortgage Association, and Student Loan Marketing Association.

MEDIUM-TERM NOTES (MTNs): Continuously offered notes, having any or all of the features of corporate bonds and ranging in maturity from nine months out to 30 years. The difference between corporate bonds and MTNs is that corporate bonds are underwritten.

REPURCHASE AGREEMENTS: A holder of securities (e.g. a "dealer") sells the securities to an investor (e.g. the City) with an agreement to repurchase the securities at a fixed price on a fixed date.

REVERSE REPURCHASE AGREEMENTS: A dealer buys securities from a client (e.g. the City) with an agreement to sell them back to the client at a fixed price on a fixed date.

MONEY MARKET INSTRUMENTS: Negotiable Certificates of Deposit, Commercial Paper and Banker's Acceptances. Negotiable Certificates of Deposit are large denomination certificates of deposit with a fixed maturity date which can be sold in the money market. They are not collateralized. Commercial Paper is an unsecured promissory note issued by a corporation. It has a fixed maturity (may not be more than 270 days) and is usually sold in discount form. Banker's Acceptances are drafts or bills of exchange accepted by a bank or trust company evidencing a loan created by the accepting bank. The accepting institution guarantees payment of the bill.

LOCAL AGENCY INVESTMENT FUND: An investment pool managed by the State Treasurer in which local governments and agencies in California may participate.

The subtotal line for each category includes the weighted average days to maturity for that category and also what percentage of the total portfolio the individual investment category represents.



CITY OF SAN JOSE
TREASURY DIVISION

(EIS / ERNEIS)

EARNED INCOME SUMMARY
07/01/08 THROUGH 09/30/08
SORT KEYS ARE FUND ICC# MATD
FUND: 1 INVESTMENT FUNDS

PAGE: 1
RUN: 10/17/08 12:25:30

INV NO.	PURCHASE DATE	COUPON RATE	DESCRIPTION	TICKER / MATURITY DATE	SHARES / SCHEDULED PAR VALUE	SCHEDULED ORIG. COST	YIELD/ 365	DATE SOLD/MAT	INCOME RECEIVED THIS PER	TOTAL/NET EARNINGS
33894	05/10/04	3.7500	FHLB-GILFD	08/15/08	5,000,000.00	4,916,389.56	4.179	MATURED	177,360.44	25,331.61
35222	05/07/07	5.0000	FHLB-UBS	08/25/08	5,000,000.00	4,995,750.00	5.047	MATURED	129,250.00	37,991.07
34925	09/13/06	4.2500	FHLB-CITIG	09/12/08	5,000,000.00	4,921,900.00	5.051	MATURED	184,350.00	49,719.72
34942	10/04/06	5.0000	FHLB-BA	09/12/08	5,000,000.00	5,004,300.00	4.882	MATURED	120,700.00	48,862.82
34980	11/15/06	5.0000	FHLB-GILFD	09/12/08	10,000,000.00	10,000,400.00	4.928	MATURED	249,600.00	98,567.33
35003	11/27/06	4.6250	FHLB-UBC	09/12/08	4,600,000.00	4,574,741.40	4.894	MATURED	131,633.60	44,774.11
35009	11/30/06	4.2500	FHLB-GILFD	09/26/08	10,000,000.00	9,894,680.00	4.838	MATURED	317,820.00	114,105.24
35219	05/04/07	3.8400	FHLB-GILFD	10/07/08	3,460,000.00	3,403,671.20	5.029			43,143.68
35002	11/27/06	4.5000	FHLB-GILFD	10/14/08	4,000,000.00	3,966,511.20	4.950			49,484.68
35223	05/08/07	3.6500	FHLB-GILFD	10/22/08	4,000,000.00	3,923,400.00	5.028			49,721.76
33801	01/29/04	3.6250	FHLB-CSFB	11/14/08	5,200,000.00	5,215,184.00	3.524			46,327.21
35229	05/09/07	3.6250	FHLB-GILFD	11/14/08	1,755,000.00	1,720,005.30	5.007			21,705.62
35234	05/15/07	4.8750	FHLB-GILFD	11/19/08	5,000,000.00	4,986,350.00	5.029			63,204.29
33675	11/28/03	4.1000	FHLB-CALL-FTB	11/28/08	5,000,000.00	5,000,000.00	4.067			51,250.00
35017	12/05/06	5.0000	FHLB-GILFD	12/12/08	5,000,000.00	5,025,395.00	4.684			59,334.23
33717	12/16/03	4.0000	FHLB-CALL-CITIG	12/16/08	5,000,000.00	5,000,000.00	3.967			50,000.00
34207	02/25/05	3.8750	FHLB-WF	02/13/09	5,000,000.00	4,963,550.00	4.057		96,875.00	50,751.79
35039	12/19/06	4.7500	FHLB-GILFD	03/13/09	10,000,000.00	9,971,150.00	4.854		237,500.00	122,006.69
35767	08/13/08	2.2000	FHLB-UBS	04/01/09	15,000,000.00	15,068,350.00	2.727			55,168.18
35765	08/12/08	2.4800	FHLB-BA	05/07/09	10,000,000.00	10,038,844.44	2.815			38,718.25
35766	08/13/08	2.6500	FHLB-UBS	06/04/09	16,000,000.00	16,054,706.67	2.828			60,944.99
35061	01/11/07	5.2500	FHLB-LB	08/05/09	5,000,000.00	5,033,850.00	4.910		131,250.00	62,301.42
35065	01/12/07	5.2500	FHLB-GILFD	08/05/09	5,000,000.00	5,027,750.00	4.963		131,250.00	62,897.44
35073	01/23/07	5.2500	FHLB-GILFD	08/05/09	5,000,000.00	5,025,750.00	4.978		131,250.00	63,063.91
35104	02/07/07	5.2500	FHLB-GILFD	08/05/09	5,000,000.00	5,026,455.00	4.969		131,250.00	62,950.43
35128	02/21/07	5.2500	FHLB-UBS	08/05/09	5,000,000.00	5,027,250.00	4.958		131,250.00	62,827.01
35260	06/12/07	5.2500	FHLB-LB	08/05/09	5,000,000.00	4,998,450.00	5.223		131,250.00	65,806.66
35072	01/23/07	4.5000	FHLB-UBS	08/14/09	5,000,000.00	4,936,000.00	5.028		112,500.00	62,554.08
35086	01/26/07	4.5000	FHLB-UBS	08/14/09	5,000,000.00	4,926,850.00	5.112		112,500.00	63,478.57
35062	01/11/07	4.3750	FHLB-GILFD	09/11/09	5,000,000.00	4,926,600.00	4.962		109,375.00	61,620.56
35076	01/23/07	4.3750	FHLB-GILFD	09/11/09	10,000,000.00	9,831,300.00	5.065		218,750.00	125,508.47
35087	01/26/07	5.2500	FHLB-UBC	09/11/09	5,000,000.00	5,013,600.00	5.090		131,250.00	64,320.31
35094	02/01/07	5.2500	FHLB-CITIG	09/11/09	5,000,000.00	5,019,750.00	5.036		131,250.00	63,718.39
35236	05/15/07	5.0000	FHLB-GILFD	10/02/09	5,000,000.00	5,007,300.00	4.891			61,728.93
35053	01/05/07	5.0000	FHLB-CALL-GILFD	10/16/09	5,000,000.00	4,989,062.50	5.049			63,491.38
35089	01/26/07	5.2500	FHLB-CALL-GILFD	11/03/09	5,000,000.00	4,994,450.00	5.253			66,129.54
35118	02/16/07	3.8600	FHLB-GILFD	11/10/09	5,000,000.00	4,853,515.00	5.048			61,753.62
35102	02/05/07	4.0000	FHLB-GILFD	11/13/09	5,000,000.00	4,862,380.00	5.100			62,510.91
35106	02/08/07	4.0000	FHLB-GILFD	11/13/09	5,000,000.00	4,871,735.00	5.024			61,695.13
35059	01/11/07	5.0000	FHLB-CS	12/11/09	5,000,000.00	5,002,450.00	4.940			62,288.35
35064	01/12/07	5.0000	FHLB-GILFD	12/11/09	5,000,000.00	4,999,910.00	4.960			62,507.78
35071	01/23/07	5.0000	FHLB-UBS	12/11/09	10,000,000.00	9,987,200.00	5.010			126,118.32
35108	02/09/07	3.8750	FHLB-GILFD	02/12/10	5,250,000.00	5,085,402.00	5.043		101,718.75	64,638.27
35121	02/15/07	3.8750	FHLB-UBC	02/12/10	5,000,000.00	4,844,550.00	5.038		96,875.00	61,522.03

CITY OF SAN JOSE
TREASURY DIVISION

(EIS / ERNEIS)

EARNED INCOME SUMMARY

07/01/08 THROUGH 09/30/08

SORT KEYS ARE FUND ICC# MATD

FUND: 1 INVESTMENT FUNDS

PAGE: 2

RUN: 10/17/08 12:25:30

INV NO.	PURCHASE DATE	COUPON RATE	DESCRIPTION	TICKER / MATURITY DATE	SHARES / SCHEDULED PAR VALUE	SCHEDULED ORIG. COST	YIELD/ 365	DATE SOLD/MAT	INCOME RECEIVED THIS PER	TOTAL/NET EARNINGS
35814	09/04/08	3.3000	FHLB-CALL-GILFD	03/02/10	10,000,000.00	10,001,833.33	3.345			24,750.00
35817	09/05/08	2.3750	FHLB-GILFD	04/30/10	10,000,000.00	9,980,765.28	3.030			21,545.14
35822	09/09/08	3.2500	FHLB-CALL-UBC	06/09/10	10,325,000.00	10,325,000.00	3.295			20,506.60
35119	02/15/07	4.7500	FHLB-GILFD	08/04/10	5,000,000.00	4,957,400.00	5.000		118,750.00	62,470.74
35120	02/15/07	4.7000	FHLB-GILFD	08/10/10	10,000,000.00	9,896,600.00	5.010		235,000.00	124,978.62
35160	03/15/07	4.5160	FHLB-GILFD	08/10/10	10,000,000.00	9,914,900.00	4.769		225,800.00	119,193.57
35171	03/27/07	4.1250	FHLB-GILFD	08/13/10	5,000,000.00	4,902,610.00	4.760		103,125.00	58,817.47
35193	04/17/07	4.1250	FHLB-GILFD	08/13/10	10,000,000.00	9,747,900.00	4.975		206,250.00	122,229.77
35194	04/17/07	4.7850	FHLB-GILFD	08/26/10	5,000,000.00	4,982,400.00	4.868		119,625.00	61,132.14
35122	02/15/07	5.1250	FHLB-JPM	09/10/10	10,000,000.00	10,036,000.00	4.965		256,250.00	125,583.17
35177	04/03/07	5.1250	FHLB-UBS	09/10/10	10,000,000.00	10,098,700.00	4.750		256,250.00	120,895.39
35159	03/15/07	4.7000	FHLB-UBC	09/21/10	9,500,000.00	9,473,153.00	4.755		223,250.00	113,545.62
35174	04/03/07	5.1250	FHLB-UBS	09/29/10	10,000,000.00	10,122,400.00	4.676		256,250.00	119,293.00
35202	04/23/07	5.1250	FHLB-UBS	09/29/10	5,000,000.00	5,040,650.00	4.808		128,125.00	61,082.58
35197	04/17/07	4.8750	FHLB-GILFD	12/10/10	10,000,000.00	9,993,500.00	4.856			122,323.61
35205	04/23/07	4.8750	FHLB-GILFD	12/10/10	5,000,000.00	5,003,400.00	4.813			60,701.78
35497	02/12/08	3.4500	FHLB-CALL-UBC	05/12/11	9,030,000.00	9,030,000.00	3.422			77,883.75
35117	02/15/07	5.3000	FHLB-CALL-GILFD	10/27/11	5,000,000.00	4,999,150.00	5.261			66,295.60
35622	05/07/08	3.7500	FHLB-CALL-GILFD	11/07/11	10,000,000.00	10,000,000.00	3.719			93,750.00
35525	02/29/08	3.7500	FHLB-CALL-UBC	02/27/12	12,805,000.00	12,772,987.50	3.791		237,426.04	122,065.48
35213	05/03/07	5.0200	FHLB-CALL-UBC	05/03/12	5,000,000.00	5,000,000.00	4.979			62,750.00
35216	05/07/07	5.0500	FHLB-CALL-UBC	05/07/12	5,000,000.00	5,000,000.00	5.009			63,125.00
35458	01/24/08	3.9500	FHLB-CALL-UBC	01/24/13	20,000,000.00	20,000,000.00	3.918		395,000.00	197,500.00
35467	01/28/08	4.2000	FHLB-CALL-GILFD	01/28/13	10,000,000.00	9,997,500.00	4.172		210,000.00	105,125.88
35483	02/05/08	4.3000	FHLB-CALL-UBC	02/05/13	10,000,000.00	10,000,000.00	4.265		215,000.00	107,500.00
35490	02/07/08	4.3500	FHLB-CALL-UBC	02/07/13	10,000,000.00	10,000,000.00	4.315		217,500.00	108,750.00
35508	02/19/08	4.0000	FHLB-CALL-GILFD	02/19/13	20,000,000.00	20,000,000.00	3.967		400,000.00	200,000.00
SUBTOTAL (ICC#) 22 FEDERAL HOME LOA 43.08%(C) 674 DAYS 471,325,000.00 469,905,526.42 4.543 7,250,408.83 5,300,339.69										
33797	01/29/04	3.2500	FNMA-BOCM	08/15/08	5,000,000.00	5,019,150.00	3.126	MATURED	62,100.00	19,341.98
33798	01/29/04	3.3750	FNMA-MISCH	12/15/08	5,000,000.00	5,018,400.00	3.260			41,237.56
33800	01/29/04	3.3750	FNMA-CITIG	12/15/08	5,000,000.00	4,955,900.00	3.560			44,464.27
33877	04/29/04	4.0000	FNMA-WF	04/29/09	5,000,000.00	5,000,000.00	3.967			50,000.00
SUBTOTAL (ICC#) 23 FEDERAL NAT MORT 1.37%(C) 121 DAYS 15,000,000.00 14,974,300.00 3.529 62,100.00 155,043.81										
35001	11/27/06	5.1500	FFCB-GILFD	09/08/08	9,500,000.00	9,531,350.00	4.869	MATURED	213,275.00	87,732.05
34979	11/15/06	4.5800	FFCB-CITIG	10/20/08	10,000,000.00	9,924,700.00	4.970			124,326.38
35014	12/05/06	3.6250	FFCB-UBC	10/24/08	10,000,000.00	9,800,700.00	4.746			117,236.90
35037	12/19/06	5.0000	FFCB-LB	12/29/08	5,000,000.00	5,007,050.00	4.883			61,624.70
35038	12/19/06	5.1000	FFCB-JPM	01/05/09	10,000,000.00	10,042,230.00	4.832		255,000.00	122,305.93
35040	12/19/06	4.9000	FFCB-GILFD	03/24/09	5,000,000.00	5,002,585.00	4.835		122,500.00	60,962.08
35051	01/05/07	4.9000	FFCB-GILFD	03/24/09	5,000,000.00	4,994,560.00	4.914		122,500.00	61,868.64

CITY OF SAN JOSE
TREASURY DIVISION

(EIS / ERNEIS)

EARNED INCOME SUMMARY
07/01/08 THROUGH 09/30/08
SORT KEYS ARE FUND ICC# MATD
FUND: 1 INVESTMENT FUNDS

PAGE: 3
RUN: 10/17/08 12:25:30

INV NO.	PURCHASE DATE	COUPON RATE	DESCRIPTION	TICKER / MATURITY DATE	SHARES / SCHEDULED PAR VALUE	SCHEDULED ORIG. COST	YIELD/ 365	DATE SOLD/MAT	INCOME RECEIVED THIS PER	TOTAL/NET EARNINGS
35079	01/23/07	5.0000	FFCB-BA	10/23/09	3,750,000.00	3,744,937.50	5.015			47,338.90
35095	02/01/07	5.0000	FFCB-LB	10/23/09	5,000,000.00	4,990,450.00	5.039			63,383.02
35098	02/05/07	5.0000	FFCB-UBS	10/23/09	5,000,000.00	4,993,600.00	5.013			63,094.15
35235	05/15/07	5.0000	FFCB-UBC	10/23/09	5,000,000.00	5,010,750.00	4.861			61,391.26
35066	01/12/07	4.8200	FFCB-GILFD	10/27/09	5,000,000.00	4,978,440.00	4.957			62,196.53
35088	01/26/07	4.8200	FFCB-GILFD	10/27/09	5,000,000.00	4,961,900.00	5.096			63,737.76
35097	02/02/07	4.8200	FFCB-GILFD	10/27/09	5,000,000.00	4,965,000.00	5.072			63,476.46
35077	01/23/07	4.8500	FFCB-WF	11/20/09	5,000,000.00	4,974,900.00	5.013			62,862.59
35074	01/23/07	5.0800	FFCB-JPM	12/02/09	5,000,000.00	5,002,835.00	5.016			63,250.18
35099	02/05/07	4.9200	FFCB-WF	01/11/10	5,000,000.00	4,981,600.00	5.024		123,000.00	63,080.58
35100	02/05/07	4.9200	FFCB-GILFD	01/11/10	5,000,000.00	4,980,960.00	5.029		123,000.00	63,135.56
35181	04/03/07	4.8750	FFCB-LB	08/06/10	5,000,000.00	5,011,100.00	4.758		121,875.00	60,101.13
35258	06/11/07	4.8750	FFCB-GILFD	08/06/10	5,000,000.00	4,936,100.00	5.308		121,875.00	66,040.62
35201	04/23/07	4.4500	FFCB-GILFD	09/27/10	1,200,000.00	1,185,048.00	4.846		26,700.00	14,475.68
35843	09/24/08	3.5000	FFCB-CALL-UBS	09/24/10	12,000,000.00	12,000,000.00	3.549			8,166.67
35176	04/03/07	4.8000	FFCB-UBC	10/26/10	5,000,000.00	5,013,100.00	4.675			59,074.35
35179	04/03/07	4.8000	FFCB-GILFD	10/26/10	5,000,000.00	5,000,445.00	4.758			59,968.56
35180	04/03/07	4.8000	FFCB-CITIG	10/26/10	5,000,000.00	5,001,550.00	4.751			59,890.48
35211	05/01/07	4.7500	FFCB-GILFD	11/01/10	5,000,000.00	4,990,600.00	4.774			60,050.63
35540	03/10/08	3.7000	FFCB-CALL-UBS	03/10/11	15,000,000.00	15,000,000.00	3.670		277,500.00	138,750.00
35833	09/19/08	3.6900	FFCB-CALL-UBS	09/19/11	13,925,000.00	13,925,000.00	3.741			17,127.75
35844	09/29/08	3.7500	FFCB-CALL-UBC	09/29/11	10,000,000.00	9,947,500.00	3.998			2,179.22
SUBTOTAL (ICC#) 27 FEDERAL FARM CRE 16.54%(C) 534 DAYS 180,875,000.00 180,367,640.50 4.771 1,507,225.00 1,858,828.76										
34972	11/07/06	4.5000	FHLMC-UBC	08/04/08	5,000,000.00	4,957,870.00	4.954	MATURED	154,630.00	22,877.23
34981	11/15/06	4.5000	FHLMC-GILFD	08/04/08	10,000,000.00	9,917,200.00	4.951	MATURED	307,800.00	45,732.80
35221	05/07/07	3.6400	FHLMC-GILFD	08/12/08	5,000,000.00	4,912,500.00	5.071	MATURED	178,500.00	28,665.15
34970	11/02/06	4.6250	FHLMC-GILFD	08/15/08	4,770,000.00	4,747,738.41	4.869	MATURED	132,567.84	28,500.21
35016	12/05/06	4.6250	FHLMC-GILFD	08/22/08	5,000,000.00	4,987,450.00	4.757	MATURED	128,175.00	33,802.91
35238	05/16/07	4.4800	FHLMC-GILFD	09/19/08	5,000,000.00	4,959,200.00	5.075	MATURED	152,800.00	55,167.48
35218	05/04/07	4.7000	FHLMC-GILFD	10/06/08	1,795,000.00	1,786,994.30	4.996			22,504.92
35015	12/05/06	4.9000	FHLMC-UBC	11/03/08	5,000,000.00	5,015,695.00	4.681			59,184.28
35228	05/09/07	3.9400	FHLMC-GILFD	11/20/08	1,500,000.00	1,476,750.00	4.994			18,587.84
35027	12/13/06	3.6250	FHLMC-GILFD	02/03/09	9,835,000.00	9,596,265.21	4.845		178,259.38	117,180.27
35078	01/23/07	4.6250	FHLMC-WF	09/28/09	4,700,000.00	4,651,308.00	5.026		108,687.50	58,919.51
35153	03/15/07	4.8750	FHLMC-GILFD	08/16/10	9,900,000.00	9,930,591.00	4.730		241,312.50	118,404.75
35155	03/14/07	4.7500	FHLMC-BA	09/22/10	2,679,000.00	2,674,847.55	4.763		63,626.25	32,109.73
35169	03/26/07	4.7500	FHLMC-UBS	10/04/10	10,475,000.00	10,456,459.25	4.770			125,714.97
35154	03/15/07	4.1600	FHLMC-GILFD	10/13/10	4,000,000.00	3,919,480.00	4.784			47,263.48
35173	04/03/07	5.0000	FHLMC-GILFD	10/18/10	9,705,000.00	9,781,446.29	4.700			115,877.37
35212	05/01/07	4.1250	FHLMC-CITIG	10/18/10	10,000,000.00	9,788,000.00	4.804			118,531.00
35225	05/08/07	4.4000	FHLMC-GILFD	11/19/10	1,000,000.00	985,820.00	4.834			12,010.50
35230	05/09/07	4.7500	FHLMC-GILFD	12/08/10	4,236,000.00	4,222,063.56	4.819			51,281.99

CITY OF SAN JOSE
TREASURY DIVISION

(EIS / ERNEIS)

EARNED INCOME SUMMARY
07/01/08 THROUGH 09/30/08
SORT KEYS ARE FUND ICC# MATD
FUND: 1 INVESTMENT FUNDS

PAGE: 4
RUN: 10/17/08 12:25:30

INV NO.	PURCHASE DATE	COUPON RATE	DESCRIPTION	TICKER / MATURITY DATE	SHARES / SCHEDULED PAR VALUE	SCHEDULED ORIG. COST	YIELD/ 365	DATE SOLD/MAT	INCOME RECEIVED THIS PER	TOTAL/NET EARNINGS
35203	04/23/07	4.5000	FHLMC-UBC	12/16/10	9,500,000.00	9,396,089.00	4.815			114,046.65
35226	05/08/07	4.5000	FHLMC-GILFD	12/16/10	2,000,000.00	1,977,580.00	4.828			24,064.98
34914	09/07/06	5.2500	FHLMC-CALL-CITIG	02/24/11	5,000,000.00	4,997,500.00	5.221		131,250.00	65,766.02
34957	10/25/06	5.4500	FHLMC-CALL-CITIG	09/02/11	5,000,000.00	4,987,500.00	6.312	09/02/08	148,750.00	54,337.74
34940	10/06/06	5.2500	FHLMC-CALL-UBC	10/06/11	5,000,000.00	4,997,500.00	5.220			65,750.96
34969	11/02/06	5.2500	FHLMC-CALL-WF	10/06/11	5,000,000.00	5,000,000.00	5.207			65,625.00
35189	04/16/07	5.3000	FHLMC-CALL-GILFD	01/09/12	5,000,000.00	4,997,656.00	5.269		132,500.00	66,374.72
35186	04/10/07	5.4000	FHLMC-CALL-LB	03/02/12	5,000,000.00	5,000,000.00	5.301	09/02/08	135,000.00	45,750.00
35141	03/26/07	5.0000	FHLMC-CALL-UBC	03/26/12	5,000,000.00	5,000,000.00	4.959		125,000.00	62,500.00
35239	05/18/07	5.2500	FHLMC-CALL-CITIG	04/03/12	5,000,000.00	4,995,000.00	5.233			65,883.14
SUBTOTAL (ICC#) 30 FED HOME LOAN MO 10.60%(C) 731 DAYS 116,325,000.00 115,647,045.16 4.949 2,318,858.47 1,742,415.60										
35686	06/30/08	2.0000	FHLB-DISC-BA	07/01/08	93,339,000.00	93,333,814.50	N.D.	MATURED	5,185.50	
35691	07/03/08	2.0200	FHLB-DISC-CS	07/07/08	16,148,000.00	16,144,375.67	2.049	MATURED	3,624.33	3,624.33
35698	07/08/08	2.0200	FHLB-DISC-CS	07/09/08	13,009,000.00	13,008,270.05	2.048	MATURED	729.95	729.95
35701	07/10/08	1.9200	FHLB DISCOUNT CORP	07/11/08	29,277,000.00	29,275,438.56	1.947	MATURED	1,561.44	1,561.44
35702	07/11/08	1.9000	FHLB-DISC-WF	07/14/08	3,255,000.00	3,254,484.63	1.927	MATURED	515.37	515.37
35706	07/14/08	1.9200	FHLB-DISC-WF	07/15/08	8,338,000.00	8,337,555.31	1.947	MATURED	444.69	444.69
35709	07/16/08	2.0000	FHLB-DISC-WF	07/17/08	24,734,000.00	24,732,625.89	2.028	MATURED	1,374.11	1,374.11
35641	05/22/08	2.1000	FHLB-DISC-UBS	07/18/08	10,000,000.00	9,966,750.00	2.136	MATURED	33,250.00	9,916.67
35711	07/17/08	1.9500	FHLB-DISC-UBS	07/18/08	7,878,000.00	7,877,573.28	1.977	MATURED	426.72	426.72
35654	06/03/08	2.1600	FHLB-DISC-WF	07/23/08	8,688,000.00	8,661,936.00	2.197	MATURED	26,064.00	11,468.16
35664	06/12/08	2.2000	FHLB-DISC-CS	07/24/08	30,000,000.00	29,923,000.00	2.236	MATURED	77,000.00	42,166.67
35717	07/24/08	1.9000	FHLB-DISC-WF	07/25/08	44,968,000.00	44,965,626.69	1.926	MATURED	2,373.31	2,373.31
35719	07/25/08	1.9300	FHLB-DISC-UBS	07/28/08	34,257,000.00	34,251,490.33	1.957	MATURED	5,509.67	5,509.67
35714	07/22/08	2.0600	FHLB-DISC-WF	07/29/08	43,308,000.00	43,290,652.74	2.089	MATURED	17,347.26	17,347.26
35723	07/28/08	2.0700	FHLB-DISC-WF	07/29/08	66,735,000.00	66,731,162.74	2.099	MATURED	3,837.26	3,837.26
35729	07/29/08	1.3500	FHLB-DISC-BA	07/30/08	89,000,000.00	88,996,662.50	1.369	MATURED	3,337.50	3,337.50
35733	07/30/08	1.9200	FHLB-DISC-UBS	07/31/08	40,000,000.00	39,997,866.67	1.947	MATURED	2,133.33	2,133.33
35734	07/30/08	1.9200	FHLB-DISC-UBS	07/31/08	12,726,000.00	12,725,321.28	1.947	MATURED	678.72	678.72
35737	07/31/08	1.8200	FHLB DISC-UBS	08/01/08	21,230,000.00	21,228,926.71	1.845	MATURED	1,073.29	1,073.29
35738	07/31/08	1.8200	FHLB DISC-UBS	08/01/08	50,000,000.00	49,997,472.22	1.845	MATURED	2,527.78	2,527.78
35756	08/08/08	1.8500	FHLB-DISC-WF	08/11/08	10,000,000.00	9,998,458.33	1.876	MATURED	1,541.67	1,541.67
35786	08/22/08	1.9000	FHLB-DISC-WF	08/25/08	9,123,000.00	9,121,555.53	1.927	MATURED	1,444.47	1,444.47
35788	08/25/08	1.9500	FHLB-DISC-BA	08/26/08	14,000,000.00	13,999,241.67	1.977	MATURED	758.33	758.33
35794	08/26/08	1.9700	FHLB-DISC-BA	08/27/08	22,000,000.00	21,998,796.11	1.997	MATURED	1,203.89	1,203.89
35798	08/27/08	1.9400	FHLB-DISC-BA	08/28/08	20,500,000.00	20,498,895.28	1.967	MATURED	1,104.72	1,104.72
35805	08/29/08	1.7500	FHLB-DISC-WF	09/02/08	3,500,000.00	3,499,319.44	1.775	MATURED	680.56	680.56
35808	09/02/08	1.9500	FHLB-DISC-WF	09/03/08	10,000,000.00	9,999,458.33	1.977	MATURED	541.67	541.67
35826	09/12/08	2.0600	FHLB-DISC-WF	09/15/08	50,000,000.00	49,991,416.67	2.089	MATURED	8,583.33	8,583.33
35827	09/12/08	2.0600	FHLB-DISC-WF	09/15/08	16,673,000.00	16,670,137.80	2.089	MATURED	2,862.20	2,862.20
35828	09/15/08	2.0000	FHLB-DISC-WF	09/16/08	66,370,000.00	66,366,312.78	2.028	MATURED	3,687.22	3,687.22
35829	09/16/08	1.9000	FHLB-DISC- WF	09/17/08	11,316,000.00	11,315,402.77	1.926	MATURED	597.23	597.23

CITY OF SAN JOSE
TREASURY DIVISION

(EIS / ERNEIS)

EARNED INCOME SUMMARY

07/01/08 THROUGH 09/30/08

SORT KEYS ARE FUND ICC# MATD

FUND: 1 INVESTMENT FUNDS

PAGE: 5

RUN: 10/17/08 12:25:30

INV NO.	PURCHASE DATE	COUPON RATE	DESCRIPTION	TICKER / MATURITY DATE	SHARES / SCHEDULED PAR VALUE	SCHEDULED ORIG. COST	YIELD/ 365	DATE SOLD/MAT	INCOME RECEIVED THIS PER	TOTAL/NET EARNINGS
35838	09/19/08	1.7000	FHLB-DISC-WF	09/22/08	52,053,000.00	52,045,625.83	1.724	MATURED	7,374.17	7,374.17
SUBTOTAL (ICC#) 43 FHLB DISCOUNT NO				0 DAYS	.00	.00	2.058		219,373.69	141,425.69
35680	06/24/08	2.3700	NCD-WFB-WF	07/22/08	54,000,000.00	54,000,000.00	2.403	MATURED	99,540.00	74,655.00
SUBTOTAL (ICC#) 71 NEGOTIABLE CERT				0 DAYS	.00	.00	2.403		99,540.00	74,655.00
35652	06/02/08	2.3000	CP-DISC-UBS FIN DEL-UBS	07/02/08	10,434,000.00	10,414,001.50	2.336	MATURED	19,998.50	666.62
35687	07/01/08	2.3000	CP-DISC-TOYOTA-TOY	07/02/08	40,000,000.00	39,997,444.44	2.332	MATURED	2,555.56	2,555.56
35689	07/02/08	2.2500	CP-DISC-TOYOTA-TOY	07/03/08	54,030,000.00	54,026,623.13	2.281	MATURED	3,376.87	3,376.87
35690	07/03/08	2.0900	CP-DISC-UBS FIN DEL-UBS	07/07/08	10,000,000.00	9,997,677.78	2.120	MATURED	2,322.22	2,322.22
35692	07/07/08	2.1000	CP-DISC-UBS FIN DEL-UBS	07/08/08	10,000,000.00	9,999,416.67	2.129	MATURED	583.33	583.33
35693	07/07/08	2.0500	CP-DISC-WFB-WF	07/08/08	10,000,000.00	9,999,430.56	2.079	MATURED	569.44	569.44
35697	07/08/08	2.0800	CP-DISC-UBS FIN DEL-LB	07/09/08	10,000,000.00	9,999,422.22	2.109	MATURED	577.78	577.78
35699	07/09/08	2.0000	CP-DISC-WFB-WF	07/10/08	17,000,000.00	16,999,055.56	2.028	MATURED	944.44	944.44
35700	07/09/08	1.9700	CP-DISC. UBS FIN DEL-UBS	07/10/08	10,070,000.00	10,069,448.95	1.997	MATURED	551.05	551.05
35649	05/29/08	2.3900	CP-DISC-UBS FIN DEL-UBS	07/14/08	4,012,000.00	3,999,747.80	2.431	MATURED	12,252.20	3,462.58
35694	07/07/08	2.1500	CP-DISC-TOYOTA-TOY	07/14/08	10,000,000.00	9,995,819.44	2.181	MATURED	4,180.56	4,180.56
35703	07/11/08	2.0000	CP-DISC-WFB-WF	07/14/08	17,000,000.00	16,997,166.67	2.028	MATURED	2,833.33	2,833.33
35705	07/14/08	1.9700	CP-DISC-WFB-WF	07/15/08	17,001,000.00	17,000,069.67	1.997	MATURED	930.33	930.33
35668	06/16/08	2.2200	CP-DISC-GE CAPITAL CORP-	07/16/08	10,053,000.00	10,034,401.95	2.255	MATURED	18,598.05	9,299.02
35707	07/15/08	2.0500	CP-DISC-WFB-WF	07/16/08	19,033,000.00	19,031,916.18	2.079	MATURED	1,083.82	1,083.82
35710	07/17/08	2.0000	CP-DISC-UBS FIN DEL-UBS	07/18/08	15,000,000.00	14,999,166.67	2.028	MATURED	833.33	833.33
35647	05/28/08	2.4100	CP-DISC-UBS FIN DEL-UBS	07/21/08	15,000,000.00	14,945,775.00	2.452	MATURED	54,225.00	20,083.33
35657	06/05/08	2.3000	GENERAL ELECTRIC CAPITAL	07/21/08	20,000,000.00	19,941,222.22	2.339	MATURED	58,777.78	25,555.56
35695	07/07/08	2.2000	CP-DISC-TOYOTA-TOY	07/22/08	15,000,000.00	14,986,250.00	2.233	MATURED	13,750.00	13,750.00
35688	07/01/08	2.3600	CP-DISC-WFB-WF	07/23/08	37,251,000.00	37,197,275.78	2.396	MATURED	53,724.22	53,724.22
35679	06/24/08	2.2000	CP-DISC-GE CAPITAL CORP-	07/24/08	25,000,000.00	24,954,166.67	2.235	MATURED	45,833.33	35,138.89
35650	05/30/08	2.4700	CP-DISC-UBS FIN DEL-UBS	07/25/08	15,000,000.00	14,942,366.67	2.514	MATURED	57,633.33	24,700.00
35682	06/25/08	2.4050	CP-DISC-UBS FIN DEL-UBS	07/25/08	10,000,000.00	9,979,958.33	2.443	MATURED	20,041.67	16,033.34
35696	07/07/08	2.2000	CP-DISC-TOYOTA-TOY	07/28/08	15,196,000.00	15,176,498.47	2.233	MATURED	19,501.53	19,501.53
35713	07/21/08	2.0200	CP-DISC-GE CAPITAL CORP-	07/28/08	25,646,000.00	25,635,926.82	2.049	MATURED	10,073.18	10,073.18
35716	07/23/08	2.0000	CP-DISC-WFB-WF	07/28/08	35,833,000.00	35,823,046.39	2.028	MATURED	9,953.61	9,953.61
35718	07/24/08	1.9700	CP-DISC-UBS FIN DEL-UBS	07/28/08	17,003,000.00	16,999,278.23	1.998	MATURED	3,721.77	3,721.77
35720	07/25/08	2.0400	CP-DISC-UBS FIN DEL-UBS	07/28/08	25,004,000.00	24,999,749.32	2.069	MATURED	4,250.68	4,250.68
35704	07/11/08	2.1000	CP-DISC-TOYOTA-TOY	07/29/08	15,000,000.00	14,984,250.00	2.131	MATURED	15,750.00	15,750.00
35715	07/22/08	2.0700	CP-DISC-TOYOTA-TOY	07/29/08	25,000,000.00	24,989,937.50	2.100	MATURED	10,062.50	10,062.50
35724	07/28/08	2.1000	CP-DISC-WFB-WF	07/29/08	35,002,000.00	34,999,958.22	2.129	MATURED	2,041.78	2,041.78
35725	07/28/08	2.0800	CP-DISC-UBS FIN DEL-UBS	07/29/08	40,002,000.00	39,999,688.77	2.109	MATURED	2,311.23	2,311.23
35726	07/28/08	2.1800	CP-DISC-TOYOTA-TOY	07/29/08	12,000,000.00	11,999,273.33	2.210	MATURED	726.67	726.67
35727	07/29/08	2.0500	CP-DISC-TOYOTA-TOY	07/30/08	54,000,000.00	53,996,925.00	2.079	MATURED	3,075.00	3,075.00
35728	07/29/08	1.9500	CP-DISC-GE CAPITAL CORP-	07/30/08	54,000,000.00	53,997,075.00	1.977	MATURED	2,925.00	2,925.00
35731	07/30/08	1.9000	CP-DISC-GE CAPITAL CORP-	07/31/08	50,000,000.00	49,997,361.11	1.926	MATURED	2,638.89	2,638.89

CITY OF SAN JOSE
TREASURY DIVISION

(EIS / ERNEIS)

EARNED INCOME SUMMARY

07/01/08 THROUGH 09/30/08

SORT KEYS ARE FUND ICC# MATD

FUND: 1 INVESTMENT FUNDS

PAGE: 6

RUN: 10/17/08 12:25:30

INV NO.	PURCHASE DATE	COUPON RATE	DESCRIPTION	TICKER / MATURITY DATE	SHARES / SCHEDULED PAR VALUE	SCHEDULED ORIG. COST	YIELD/ 365	DATE SOLD/MAT	INCOME RECEIVED THIS PER	TOTAL/NET EARNINGS
35732	07/30/08	1.9000	CP-DISC-TOYOTA-TOY	07/31/08	50,000,000.00	49,997,361.11	1.926	MATURED	2,638.89	2,638.89
35735	07/30/08	2.0500	CP-DISC-UBS FIN DEL-UBS	07/31/08	42,000,000.00	41,997,608.33	2.079	MATURED	2,391.67	2,391.67
35736	07/31/08	2.0300	CP DISC-UBS FIN DEL-UBS	08/01/08	42,000,000.00	41,997,631.67	2.058	MATURED	2,368.33	2,368.33
35739	07/31/08	1.9500	CP DISC-TOYOTA-TOY	08/01/08	50,000,000.00	49,997,291.67	1.977	MATURED	2,708.33	2,708.33
35740	07/31/08	1.9500	CP DISC-GE CAPITAL CORP-	08/01/08	50,000,000.00	49,997,291.67	1.977	MATURED	2,708.33	2,708.33
35742	08/01/08	2.0300	CP DISC-UBS FIN	08/04/08	29,159,000.00	29,154,067.27	2.059	MATURED	4,932.73	4,932.73
35743	08/01/08	2.0500	CP DISC-TOYOTA-TOY	08/04/08	50,000,000.00	49,991,458.33	2.079	MATURED	8,541.67	8,541.67
35745	08/04/08	2.0400	CP-DISC-UBS FIN DEL-UBS	08/05/08	35,000,000.00	34,998,016.67	2.068	MATURED	1,983.33	1,983.33
35708	07/16/08	2.4300	CP-DISC-WFB-WF	08/06/08	17,000,000.00	16,975,902.50	2.467	MATURED	24,097.50	24,097.50
35746	08/05/08	2.0300	CP-DISC-UBS FIN DEL-UBS	08/06/08	38,451,000.00	38,448,831.79	2.058	MATURED	2,168.21	2,168.21
35747	08/06/08	2.0100	CP-DISC-UBS FIN DEL-UBS	08/07/08	42,000,000.00	41,997,655.00	2.038	MATURED	2,345.00	2,345.00
35748	08/06/08	1.9000	CP-DISC-WFB-WF	08/07/08	9,032,000.00	9,031,523.31	1.926	MATURED	476.69	476.69
35749	08/07/08	1.9700	CP-DISC-WFB-WF	08/08/08	15,000,000.00	14,999,179.17	1.997	MATURED	820.83	820.83
35750	08/07/08	1.9800	CP-DISC-UBS FIN DEL-UBS	08/08/08	6,645,000.00	6,644,634.53	2.008	MATURED	365.47	365.47
35614	05/05/08	2.6400	CP-DISC-BANKAMERICA-BA	08/12/08	50,000,000.00	49,637,000.00	2.696	MATURED	363,000.00	154,000.00
35757	08/11/08	1.9000	CP-DISC-GE CAPITAL CORP-	08/12/08	9,030,000.00	9,029,523.42	1.926	MATURED	476.58	476.58
35730	07/29/08	2.4300	CP-DISC-WFB-WF	08/13/08	37,037,000.00	36,999,500.04	2.466	MATURED	37,499.96	37,499.96
35759	08/12/08	1.9500	CP-DISC-BANKAMERICA-BA	08/13/08	40,000,000.00	39,997,833.33	1.977	MATURED	2,166.67	2,166.67
35760	08/12/08	1.9500	CP-DISC-BANKAMERICA-BA	08/13/08	3,927,000.00	3,926,787.29	1.977	MATURED	212.71	212.71
35763	08/13/08	1.9700	CP-DISC-BANKAMERICA-BA	08/14/08	28,913,000.00	28,911,417.82	1.997	MATURED	1,582.18	1,582.18
35764	08/13/08	1.9800	CP-DISC-WFB-WF	08/14/08	25,000,000.00	24,998,625.00	2.008	MATURED	1,375.00	1,375.00
35768	08/14/08	2.0000	CP-DISC-WFB-WF	08/15/08	37,000,000.00	36,997,944.44	2.028	MATURED	2,055.56	2,055.56
35769	08/14/08	1.9500	CP-DISC-GE CAPITAL CORP-	08/15/08	13,607,000.00	13,606,262.95	1.977	MATURED	737.05	737.05
35712	07/18/08	2.4300	CP-DISC-UBS FIN DEL-UBS	08/18/08	11,700,000.00	11,675,517.75	2.469	MATURED	24,482.25	24,482.25
35770	08/15/08	2.1200	CP-DISC-WFB-WF	08/18/08	34,455,000.00	34,448,912.95	2.150	MATURED	6,087.05	6,087.05
35771	08/18/08	2.0500	CP-DISC-WFB-WF	08/19/08	30,000,000.00	29,998,291.67	2.079	MATURED	1,708.33	1,708.33
35772	08/18/08	2.0500	CP-DISC-UBS FIN DEL-UBS	08/19/08	12,761,000.00	12,760,273.33	2.079	MATURED	726.67	726.67
35777	08/19/08	1.9400	CP-DISC-UBS FIN DEL-UBS	08/20/08	4,457,000.00	4,456,759.82	1.967	MATURED	240.18	240.18
35778	08/19/08	1.9500	CP-DISC-WFB-WF	08/20/08	37,000,000.00	36,997,995.83	1.977	MATURED	2,004.17	2,004.17
35779	08/20/08	1.9700	CP-DISC-WFB-WF	08/21/08	38,000,000.00	37,997,920.56	1.997	MATURED	2,079.44	2,079.44
35780	08/20/08	1.9000	CP-DISC-GE CAPITAL CORP-	08/21/08	18,845,000.00	18,844,005.40	1.926	MATURED	994.60	994.60
35781	08/21/08	1.9000	CP-DISC-GE CAPITAL CORP-	08/22/08	6,713,000.00	6,712,645.70	1.927	MATURED	354.30	354.30
35782	08/21/08	1.9700	CP-DISC-WFB-WF	08/22/08	38,000,000.00	37,997,920.56	1.997	MATURED	2,079.44	2,079.44
35783	08/21/08	1.9800	CP-DISC-UBS FIN DEL-UBS	08/22/08	15,000,000.00	14,999,175.00	2.008	MATURED	825.00	825.00
35744	08/04/08	2.2000	CP-DISC-TOYOTA-TOY	08/25/08	52,160,000.00	52,093,061.33	2.233	MATURED	66,938.67	66,938.67
35784	08/22/08	2.0000	CP-DISC-UBS FIN DEL-UBS	08/25/08	15,000,000.00	14,997,500.00	2.028	MATURED	2,500.00	2,500.00
35785	08/22/08	2.0000	CP-DISC-WFB-WF	08/25/08	38,000,000.00	37,993,666.67	2.028	MATURED	6,333.33	6,333.33
35755	08/08/08	2.4000	CP-DISC-WFB-WF	08/26/08	16,633,000.00	16,613,040.40	2.436	MATURED	19,959.60	19,959.60
35758	08/12/08	2.1500	CP-DISC-GE CAPITAL CORP-	08/26/08	10,000,000.00	9,991,638.89	2.182	MATURED	8,361.11	8,361.11
35787	08/25/08	2.0200	CP-DISC-BANKAMERICA-BA	08/26/08	54,000,000.00	53,996,970.00	2.048	MATURED	3,030.00	3,030.00
35789	08/25/08	2.0000	CP-DISC-WFB-WF	08/26/08	37,000,000.00	36,997,944.44	2.028	MATURED	2,055.56	2,055.56
35790	08/25/08	2.0000	CP-DISC-UBS FIN DEL-UBS	08/26/08	14,000,000.00	13,999,222.22	2.028	MATURED	777.78	777.78
35791	08/26/08	2.0000	CP-DISC-UBS FIN DEL-UBS	08/27/08	14,000,000.00	13,999,222.22	2.028	MATURED	777.78	777.78
35792	08/26/08	2.0000	CP-DISC-WFB-WF	08/27/08	54,000,000.00	53,997,000.00	2.028	MATURED	3,000.00	3,000.00

CITY OF SAN JOSE
TREASURY DIVISION

(EIS / ERNEIS)

EARNED INCOME SUMMARY

07/01/08 THROUGH 09/30/08

SORT KEYS ARE FUND ICC# MATD

FUND: 1 INVESTMENT FUNDS

PAGE: 7

RUN: 10/17/08 12:25:30

INV NO.	PURCHASE DATE	COUPON RATE	DESCRIPTION	TICKER / MATURITY DATE	SHARES / SCHEDULED PAR VALUE	SCHEDULED ORIG. COST	YIELD/ 365	DATE SOLD/MAT	INCOME RECEIVED THIS PER	TOTAL/NET EARNINGS
35793	08/26/08	2.0500	CP-DISC-BANKAMERICA-BA	08/27/08	54,000,000.00	53,996,925.00	2.079	MATURED	3,075.00	3,075.00
35795	08/27/08	2.0200	CP-DISC-BANKAMERICA-BA	08/28/08	54,000,000.00	53,996,970.00	2.048	MATURED	3,030.00	3,030.00
35796	08/27/08	2.0000	CP-DISC-WFB-WF	08/28/08	54,000,000.00	53,997,000.00	2.028	MATURED	3,000.00	3,000.00
35797	08/27/08	2.0000	CP-DISC-UBS FIN DEL-UBS	08/28/08	14,000,000.00	13,999,222.22	2.028	MATURED	777.78	777.78
35800	08/28/08	2.0200	CP-DISC-BANKAMERICA-BA	08/29/08	54,000,000.00	53,996,970.00	2.048	MATURED	3,030.00	3,030.00
35801	08/28/08	2.0000	CP-DISC-UBS FIN DEL-UBS	08/29/08	5,900,000.00	5,899,672.22	2.028	MATURED	327.78	327.78
35802	08/28/08	2.0000	CP-DISC-WFB-WF	08/29/08	54,000,000.00	53,997,000.00	2.028	MATURED	3,000.00	3,000.00
35754	08/08/08	2.2550	CP-DISC-UBS FIN DEL-UBS	09/02/08	10,000,000.00	9,984,340.28	2.290	MATURED	15,659.72	15,659.72
35803	08/29/08	2.0300	CP-DISC-WFB-WF	09/02/08	50,300,000.00	50,288,654.56	2.059	MATURED	11,345.44	11,345.44
35804	08/29/08	2.0500	CP-DISC-TOYOTA-TOY	09/02/08	54,000,000.00	53,987,700.00	2.079	MATURED	12,300.00	12,300.00
35806	09/02/08	2.0200	CP-DISC-BANKAMERICA-BA	09/03/08	52,069,000.00	52,066,078.35	2.048	MATURED	2,921.65	2,921.65
35807	09/02/08	2.0600	CP-DISC-TOYOTA-TOY	09/03/08	54,000,000.00	53,996,910.00	2.089	MATURED	3,090.00	3,090.00
35809	09/03/08	2.0200	CP-DISC-UBS FIN DEL-UBS	09/04/08	8,654,000.00	8,653,514.41	2.048	MATURED	485.59	485.59
35810	09/03/08	2.0200	CP-DISC-BANKAMERICA-BA	09/04/08	54,000,000.00	53,996,970.00	2.048	MATURED	3,030.00	3,030.00
35811	09/03/08	2.0200	CP-DISC-TOYOTA-TOY	09/04/08	54,000,000.00	53,996,970.00	2.048	MATURED	3,030.00	3,030.00
35812	09/04/08	2.0600	CP-DISC-TOYOTA-TOY	09/05/08	52,880,000.00	52,876,974.09	2.089	MATURED	3,025.91	3,025.91
35813	09/04/08	2.0600	CP-DISC-BANKAMERICA-BA	09/05/08	54,000,000.00	53,996,910.00	2.089	MATURED	3,090.00	3,090.00
35815	09/05/08	2.0500	CP-DISC-BANKAMERICA-BA	09/08/08	54,000,000.00	53,990,775.00	2.079	MATURED	9,225.00	9,225.00
35816	09/05/08	2.0400	CP-DISC-TOYOTA-TOY	09/08/08	42,131,000.00	42,123,837.73	2.069	MATURED	7,162.27	7,162.27
35819	09/08/08	2.0000	CP-DISC-UBS FIN DEL -UBS	09/09/08	5,763,000.00	5,762,679.83	2.028	MATURED	320.17	320.17
35820	09/08/08	2.0400	CP-DISC-BANKAMERICA-BA	09/09/08	54,000,000.00	53,996,940.00	2.068	MATURED	3,060.00	3,060.00
35821	09/09/08	2.0000	CP-DISC-BANKAMERICA-BA	09/10/08	53,559,000.00	53,556,024.50	2.028	MATURED	2,975.50	2,975.50
35823	09/10/08	2.0000	CP-DISC-BANKAMERICA-BA	09/11/08	43,244,000.00	43,241,597.56	2.028	MATURED	2,402.44	2,402.44
35824	09/11/08	2.0000	CP-DISC-UBS FIN DEL-UBS	09/12/08	3,800,000.00	3,799,788.89	2.028	MATURED	211.11	211.11
35825	09/11/08	2.0000	CP-DISC-WFB-WF	09/12/08	54,000,000.00	53,997,000.00	2.028	MATURED	3,000.00	3,000.00
35751	08/07/08	2.4650	CP-DISC-UBS FIN DEL-UBS	09/15/08	10,000,000.00	9,973,295.83	2.506	MATURED	26,704.17	26,704.17
35818	09/08/08	2.1500	CP-DISC-TOYOTA-TOY	09/16/08	54,000,000.00	53,974,200.00	2.181	MATURED	25,800.00	25,800.00
35832	09/16/08	2.0000	CP-DISC-GE CAPITAL CORP-	09/17/08	54,000,000.00	53,997,000.00	2.028	MATURED	3,000.00	3,000.00
35834	09/17/08	2.0000	CP-DISC-GE CAPITAL CORP-	09/18/08	50,000,000.00	49,997,222.22	2.028	MATURED	2,777.78	2,777.78
35835	09/17/08	1.7500	CP-DISC-WFB-WF	09/18/08	17,039,000.00	17,038,171.72	1.774	MATURED	828.28	828.28
35836	09/18/08	2.0000	CP-DISC- WFB-WF	09/19/08	50,000,000.00	49,997,222.22	2.028	MATURED	2,777.78	2,777.78
35837	09/18/08	2.0000	CP-DISC-GE CAPITAL CORP-	09/19/08	17,307,000.00	17,306,038.50	2.028	MATURED	961.50	961.50
35830	09/16/08	3.0000	CP-DISC-BANKAMERICA-BA	09/23/08	7,065,000.00	7,060,878.75	3.043	MATURED	4,121.25	4,121.25
35839	09/22/08	2.0000	CP-DISC-WFB-WF	09/23/08	50,578,000.00	50,575,190.11	2.028	MATURED	2,809.89	2,809.89
35840	09/23/08	1.8800	CP-DISC-BANKAMERICA-BA	09/24/08	50,000,000.00	49,997,388.89	1.906	MATURED	2,611.11	2,611.11
35841	09/23/08	1.5000	CP-DISC-GE CAPITAL CORP-	09/24/08	4,792,000.00	4,791,800.33	1.521	MATURED	199.67	199.67
35842	09/24/08	1.0000	CP-DISC-WFB-WF	09/25/08	36,968,000.00	36,966,973.11	1.014	MATURED	1,026.89	1,026.89
35845	09/25/08	1.5000	CP-DISC-WFB-WF	09/26/08	31,665,000.00	31,663,680.63	1.521	MATURED	1,319.37	1,319.37
35752	08/07/08	2.5750	CP-DISC-UBS FIN DEL-UBS	09/29/08	10,000,000.00	9,962,090.28	2.621	MATURED	37,909.72	37,909.72
35848	09/26/08	1.0000	CP-DISC-BANKAMERICA-BA	09/29/08	25,000,000.00	24,997,916.67	1.014	MATURED	2,083.33	2,083.33
35850	09/29/08	.7500	CP-DISC-BANKAMERICA-BA	09/30/08	8,147,000.00	8,146,830.27	.760	MATURED	169.73	169.73
35851	09/30/08	.5000	CP-DISC-BANKAMERICA-BA	10/01/08	28,414,000.00	28,413,605.36	.507			394.64
35831	09/16/08	2.2200	CP-DISC-TOYOTA-TOY	10/02/08	54,000,000.00	53,946,720.00	2.253			49,950.00
35753	08/07/08	2.6400	CP-DISC-UBS FIN DEL-UBS	10/07/08	10,000,000.00	9,955,266.67	2.689			40,333.33

CITY OF SAN JOSE
TREASURY DIVISION

(EIS / ERNEIS)

EARNED INCOME SUMMARY
07/01/08 THROUGH 09/30/08
SORT KEYS ARE FUND ICC# MATD
FUND: 1 INVESTMENT FUNDS

PAGE: 8
RUN: 10/17/08 12:25:30

INV NO.	PURCHASE DATE	COUPON RATE	DESCRIPTION	TICKER / MATURITY DATE	SHARES / SCHEDULED PAR VALUE	SCHEDULED ORIG. COST	YIELD/ 365	DATE SOLD/MAT	INCOME RECEIVED THIS PER	TOTAL/NET EARNINGS
35846	09/25/08	3.4000	CP-DISC-WFB-WF	10/09/08	10,000,000.00	9,986,777.78	3.452			5,666.67
35847	09/26/08	3.4000	CP-DISC-WFB-WF	10/10/08	10,834,000.00	10,819,675.04	3.452			5,116.06
SUBTOTAL (ICC#) 82			COMMERCIAL PAPER 10.37%(C)	3 DAYS	113,248,000.00	113,122,044.85	2.319		1,303,851.76	1,043,891.94
35741	07/01/08	2.0632	DREYFUS MMF-WF-1	10/01/08	1,095,715.68	1,095,715.68	2.134	09/25/08	5,499.07	5,499.07
SUBTOTAL (ICC#) 97			WFB MONEY MARKET	0 DAYS	.00	.00	2.134		5,499.07	5,499.07
32936	01/01/02	2.7723	STATE INVESTMT POOL-CTY	10/01/08	40,000,000.00	40,000,000.00	2.772		279,557.06	279,557.05
33658	10/01/03	2.7723	STATE INVESTMT POOL-RDA	10/01/08	40,000,000.00	40,000,000.00	2.772		279,557.00	279,556.99
SUBTOTAL (ICC#) 99			PASSBOOK & STATE 7.33%(C)	1 DAYS	80,000,000.00	80,000,000.00	2.772		559,114.06	559,114.04
SUBTOTAL (FUND) 1 INVESTMENT FUNDS - ASSETS				513 DAYS	976,773,000.00	974,016,556.93			13,325,970.88	10,881,213.60
SUBTOTAL (FUND) 1 INVESTMENT FUNDS - NET					976,773,000.00	974,016,556.93			13,325,970.88	10,881,213.60

FUND STATISTICS	ASSETS	LIABILITIES
AVERAGE DAILY INVESTMENT BALANCE	:1,073,820,648.68	
EARNED INTEREST YIELD THIS PERIOD	:	4.020
WEIGHTED AVG YIELD AT END OF PERIOD	:	4.070
TOTAL INTEREST EARNED FOR FUTURE RECEIPT:	10,005,223.78	

CITY OF SAN JOSE
TREASURY DIVISION

(EIS / ERNEIS)

EARNED INCOME SUMMARY
07/01/08 THROUGH 09/30/08
SORT KEYS ARE FUND ICC# MATD
FUND: 8 EVERGREEN CREEK

PAGE: 9
RUN: 10/17/08 12:25:30

INV NO.	PURCHASE DATE	COUPON RATE	DESCRIPTION	TICKER / MATURITY DATE	SHARES / SCHEDULED PAR VALUE	SCHEDULED ORIG. COST	YIELD/ 365	DATE SOLD/MAT	INCOME RECEIVED THIS PER	TOTAL/NET EARNINGS
35677	06/18/08	2.2000	FHLB-DISC-WF	08/18/08	72,000.00	71,731.60	2.239	MATURED	268.40	211.20
SUBTOTAL (ICC#) 43 FHLB DISCOUNT NO					0 DAYS	.00	.00	2.239	268.40	211.20
35773	08/18/08	2.8200	CP-DISC-UBS FIN DEL-UBS	11/18/08	70,000.00	69,495.53	2.880			241.27
SUBTOTAL (ICC#) 82 COMMERCIAL PAPER .01%(C)					49 DAYS	70,000.00	69,495.53	2.880	.00	241.27
SUBTOTAL (FUND) 8 EVERGREEN CREEK - ASSETS					49 DAYS	70,000.00	69,495.53		268.40	452.47
SUBTOTAL (FUND) 8 EVERGREEN CREEK - NET						70,000.00	69,495.53		268.40	452.47

FUND STATISTICS	ASSETS	LIABILITIES
AVERAGE DAILY INVESTMENT BALANCE	: 70,662.18	
EARNED INTEREST YIELD THIS PERIOD	: 2.540	.000
WEIGHTED AVG YIELD AT END OF PERIOD	: 2.880	.000
TOTAL INTEREST EARNED FOR FUTURE RECEIPT:	241.27	

CITY OF SAN JOSE
TREASURY DIVISION

(EIS / ERNEIS)

EARNED INCOME SUMMARY

07/01/08 THROUGH 09/30/08

SORT KEYS ARE FUND ICC# MATD

PAGE: 10

RUN: 10/17/08 12:25:30

FUND: 33 Reassessment Revenue Bonds, 94A

INV NO.	PURCHASE DATE	COUPON RATE	DESCRIPTION	TICKER / MATURITY DATE	SHARES / SCHEDULED PAR VALUE	SCHEDULED ORIG. COST	YIELD/ 365	DATE SOLD/MAT	INCOME RECEIVED THIS PER	TOTAL/NET EARNINGS
35678	06/18/08	2.2000	FHLB-DISC-WF	08/18/08	64,000.00	63,761.42	2.239	MATURED	238.58	187.74
SUBTOTAL (ICC#) 43 FHLB DISCOUNT NO				0 DAYS	.00	.00	2.239		238.58	187.74
35774	08/18/08	2.8200	CP-DISC-UBS FIN DEL-UBS	11/18/08	65,000.00	64,531.57	2.880			224.03
SUBTOTAL (ICC#) 82 COMMERCIAL PAPER .01%(C)				49 DAYS	65,000.00	64,531.57	2.880		.00	224.03
SUBTOTAL (FUND) 33 Reassessment Revenu- ASSETS				49 DAYS	65,000.00	64,531.57			238.58	411.77
SUBTOTAL (FUND) 33 Reassessment Revenu- NET					65,000.00	64,531.57			238.58	411.77

FUND STATISTICS	ASSETS	LIABILITIES
AVERAGE DAILY INVESTMENT BALANCE :	64,129.75	
EARNED INTEREST YIELD THIS PERIOD :	2.547	.000
WEIGHTED AVG YIELD AT END OF PERIOD :	2.880	.000
TOTAL INTEREST EARNED FOR FUTURE RECEIPT:	224.03	

CITY OF SAN JOSE
TREASURY DIVISION

(EIS / ERNEIS)

EARNED INCOME SUMMARY
07/01/08 THROUGH 09/30/08
SORT KEYS ARE FUND ICC# MATD
FUND: 34 CSJ/CSC Jt Pwr

PAGE: 11
RUN: 10/17/08 12:25:30

INV NO.	PURCHASE DATE	COUPON RATE	DESCRIPTION	TICKER / MATURITY DATE	SHARES / SCHEDULED PAR VALUE	SCHEDULED ORIG. COST	YIELD/365	DATE SOLD/MAT	INCOME RECEIVED THIS PER	TOTAL/NET EARNINGS
35644	05/23/08	2.0950	FHLB-DISC-CS	07/25/08	831,000.00	827,953.35	2.132	MATURED	3,046.65	1,160.63
35721	07/25/08	2.3700	FHLB-DISC-UBS	10/01/08	836,000.00	832,257.51	2.414			3,742.49
SUBTOTAL (ICC#) 43 FHLB DISCOUNT NO			.08%(C)	1 DAYS	836,000.00	832,257.51	2.340		3,046.65	4,903.12
SUBTOTAL (FUND) 34 CSJ/CSC Jt Pwr			- ASSETS	1 DAYS	836,000.00	832,257.51			3,046.65	4,903.12
SUBTOTAL (FUND) 34 CSJ/CSC Jt Pwr			- NET		836,000.00	832,257.51			3,046.65	4,903.12

FUND STATISTICS		ASSETS	LIABILITIES
AVERAGE DAILY INVESTMENT BALANCE	:	831,134.69	
EARNED INTEREST YIELD THIS PERIOD	:	2.340	.000
WEIGHTED AVG YIELD AT END OF PERIOD	:	2.414	.000
TOTAL INTEREST EARNED FOR FUTURE RECEIPT:		3,742.49	

CITY OF SAN JOSE
TREASURY DIVISION

(EIS / ERNEIS)

EARNED INCOME SUMMARY

07/01/08 THROUGH 09/30/08

SORT KEYS ARE FUND ICC# MATD

PAGE: 12

RUN: 10/17/08 12:25:30

FUND: 40 '97 Community Facility Dist.1

INV NO.	PURCHASE DATE	COUPON RATE	DESCRIPTION	TICKER / MATURITY DATE	SHARES / SCHEDULED PAR VALUE	SCHEDULED ORIG. COST	YIELD/ 365	DATE SOLD/MAT	INCOME RECEIVED THIS PER	TOTAL/NET EARNINGS
35645	05/23/08	2.0950	FHLB-DISC-CS	07/25/08	355,000.00	353,698.48	2.132	MATURED	1,301.52	495.82
35722	07/25/08	2.2000	FHLB-DISC-UBS	08/27/08	349,000.00	348,296.18	2.235	MATURED	703.82	703.82
35799	08/27/08	2.4200	FHLB-DISC-BA	10/27/08	350,000.00	348,564.81	2.464			823.47
SUBTOTAL (ICC#) 43 FHLB DISCOUNT NO .03%(C) 26 DAYS					350,000.00	348,564.81	2.295		2,005.34	2,023.11
SUBTOTAL (FUND) 40 '97 Community Facil- ASSETS 26 DAYS					350,000.00	348,564.81			2,005.34	2,023.11
SUBTOTAL (FUND) 40 '97 Community Facil- NET					350,000.00	348,564.81			2,005.34	2,023.11

FUND STATISTICS		ASSETS	LIABILITIES
AVERAGE DAILY INVESTMENT BALANCE	:	349,807.67	
EARNED INTEREST YIELD THIS PERIOD	:	2.295	.000
WEIGHTED AVG YIELD AT END OF PERIOD	:	2.464	.000
TOTAL INTEREST EARNED FOR FUTURE RECEIPT:		823.47	

CITY OF SAN JOSE
TREASURY DIVISION

(EIS / ERNEIS)

EARNED INCOME SUMMARY
07/01/08 THROUGH 09/30/08
SORT KEYS ARE FUND ICC# MATD
FUND: 46 AIRPORT C/P SER B

PAGE: 13
RUN: 10/17/08 12:25:30

INV NO.	PURCHASE DATE	COUPON RATE	DESCRIPTION	TICKER / MATURITY DATE	SHARES / SCHEDULED PAR VALUE	SCHEDULED ORIG. COST	YIELD/ 365	DATE SOLD/MAT	INCOME RECEIVED THIS PER	TOTAL/NET EARNINGS
34862	07/03/06	2.1686	DREYFUS MMF-WF-46	07/01/08	1,091,703.06	1,091,703.06	.000	07/01/08	1,942.40	
SUBTOTAL (ICC#) 97 WFB MONEY MARKET				0 DAYS	.00	.00	.000		1,942.40	.00
SUBTOTAL (FUND) 46 AIRPORT C/P SER B - ASSETS				0 DAYS	.00	.00			1,942.40	.00
SUBTOTAL (FUND) 46 AIRPORT C/P SER B - NET					.00	.00			1,942.40	.00

FUND STATISTICS	ASSETS	LIABILITIES
AVERAGE DAILY INVESTMENT BALANCE :		
EARNED INTEREST YIELD THIS PERIOD :	.000	.000
WEIGHTED AVG YIELD AT END OF PERIOD :	.000	.000
TOTAL INTEREST EARNED FOR FUTURE RECEIPT:	174.56	

C I T Y O F S A N J O S E
T R E A S U R Y D I V I S I O N

(EIS / ERNEIS)

E A R N E D I N C O M E S U M M A R Y
07/01/08 THROUGH 09/30/08
SORT KEYS ARE FUND ICC# MATD
FUND: 54 RDA SERIES 2007

PAGE: 14
RUN: 10/17/08 12:25:30

INV NO.	PURCHASE DATE	COUPON RATE	DESCRIPTION	TICKER / MATURITY DATE	SHARES / SCHEDULED PAR VALUE	SCHEDULED ORIG. COST	YIELD/ 365	DATE SOLD/MAT	INCOME RECEIVED THIS PER	TOTAL/NET EARNINGS
35386	11/08/07	2.7723	SERIES 2007-RDA	10/01/08	115,402,671.33	115,402,671.33	2.772		892,042.08	892,042.08
SUBTOTAL (ICC#) 99 PASSBOOK & STATE 10.58%(C)			1 DAYS	115,402,671.33	115,402,671.33	2.772		892,042.08	892,042.08	
SUBTOTAL (FUND) 54 RDA SERIES 2007 - ASSETS			1 DAYS	115,402,671.33	115,402,671.33			892,042.08	892,042.08	
SUBTOTAL (FUND) 54 RDA SERIES 2007 - NET				115,402,671.33	115,402,671.33			892,042.08	892,042.08	
FUND STATISTICS				ASSETS	LIABILITIES					
AVERAGE DAILY INVESTMENT BALANCE				:	127,657,917.00					
EARNED INTEREST YIELD THIS PERIOD				:	2.772	.000				
WEIGHTED AVG YIELD AT END OF PERIOD				:	2.772	.000				
TOTAL INTEREST EARNED FOR FUTURE RECEIPT:										
GRAND TOTAL			100.00%(C)	458 DAYS	1093496671.33	1090734077.68	3.886	14,225,514.3311,781,046.15		

**CITY OF SAN JOSE: TIME DEPOSIT BANK DISTRIBUTION
AS OF SEPTEMBER 30, 2008**

There were no time deposits outstanding as of September 30, 2008.

SECTION D

MARKET VALUE OF PORTFOLIO

The Government Securities Inventory at Market Value is an inventory of each government security investment outstanding as of a certain date, along with its current market value and accrued interest.



CITY OF SAN JOSE
 TREASURY DIVISION
 INVESTMENT INVENTORY WITH MARKET VALUE

(RPTMKT)

INVESTMENTS OUTSTANDING AS OF 09/30/08
 MAJOR SORT KEY IS FUND

INVEST NUMBER	DESCRIPTION PURCHASE MATURITY DATE	CUSIP	BANK BROK	FUND SAFE	CPN YTM	RATE TR	PAR/SHARES BOOK	MARKET VALUE MARKET PRICE	CURR ACCR PRICE	INT SOURCE	UNREALIZED GAIN UNREALIZED LOSS
A 35219	FHLB-GILFD 05/04/07 10/07/08	3133X8MX7	1365	186	100	3.8400 5.0360	3,460,000.00 3,403,671.20	3,460,000.00 100.000000000	64,217.60	SUNGARD	56,328.80
A 35002	FHLB-GILFD 11/27/06 10/14/08	3133XDJG7	1365	186	100	4.5000 4.9690	4,000,000.00 3,966,511.20	4,002,500.00 100.062500000	83,500.00	SUNGARD	35,988.80
A 35223	FHLB-GILFD 05/08/07 10/22/08	3133X1HL4	1365	186	100	3.6500 5.0300	4,000,000.00 3,923,400.00	4,001,250.00 100.031250000	64,483.33	SUNGARD	77,850.00
A 33801	FHLB-CSFB 01/29/04 11/14/08	3133X2BZ7	1365	180	100	3.6250 3.5570	5,200,000.00 5,215,184.00	5,203,250.00 100.062500000	71,211.11	SUNGARD	-11,934.00
A 35229	FHLB-GILFD 05/09/07 11/14/08	3133X2BZ7	1365	186	100	3.6250 5.0090	1,755,000.00 1,720,005.30	1,756,096.88 100.062500000	24,033.75	SUNGARD	36,091.58
A 35234	FHLB-GILFD 05/15/07 11/19/08	3133XKP82	1365	186	100	4.8750 5.0640	5,000,000.00 4,986,350.00	5,010,937.50 100.218750000	89,375.00	SUNGARD	24,587.50
A 33675	FHLB-CALL-FTB 11/28/03 11/28/08	3133X2E92	1365	184	100	4.1000 4.1000	5,000,000.00 5,000,000.00	5,007,812.50 100.156250000	70,041.67	SUNGARD	7,812.50
A 35017	FHLB-GILFD 12/05/06 12/12/08	3133XHTU6	1365	186	100	5.0000 4.7280	5,000,000.00 5,025,395.00	5,018,750.00 100.375000000	75,694.44	SUNGARD	-6,645.00
A 33717	FHLB-CALL-CITIG 12/16/03 12/16/08	3133X2R56	1365	132	100	4.0000 4.0000	5,000,000.00 5,000,000.00	5,009,375.00 100.187500000	58,333.33	SUNGARD	9,375.00
A 34207	FHLB-WF 02/25/05 02/13/09	3133XAN52	1365	451	100	3.8750 4.0750	5,000,000.00 4,963,550.00	5,014,062.50 100.281250000	24,756.94	SUNGARD	50,512.50
A 35039	FHLB-GILFD 12/19/06 03/13/09	3133XEN96	1365	186	100	4.7500 4.8850	10,000,000.00 9,971,150.00	10,071,875.00 100.718750000	23,750.00	SUNGARD	100,725.00
A 35767	FHLB-UBS 08/13/08 04/01/09	3133XQJD5	1365	441	100	2.2000 2.7600	15,000,000.00 15,068,350.00	14,925,000.00 99.500000000	165,000.00	SUNGARD	-22,350.00
A 35765	FHLB-BA 08/12/08 05/07/09	3133XQZA3	1365	40	100	2.4800 2.8300	10,000,000.00 10,038,844.44	9,956,250.00 99.562500000	99,200.00	SUNGARD	-17,150.00
A 35766	FHLB-UBS 08/13/08 06/04/09	3133XRGC8	1365	441	100	2.6500 2.8560	16,000,000.00 16,054,706.67	15,940,000.00 99.625000000	137,800.00	SUNGARD	-33,440.00
A 35061	FHLB-LB 01/11/07 08/05/09	3133XGEQ3	1365	260	100	5.2500 4.9640	5,000,000.00 5,033,850.00	5,085,937.50 101.718750000	40,833.33	SUNGARD	52,087.50
A 35065	FHLB-GILFD 01/12/07 08/05/09	3133XGEQ3	1365	186	100	5.2500 5.0150	5,000,000.00 5,027,750.00	5,085,937.50 101.718750000	40,833.33	SUNGARD	58,187.50
A 35073	FHLB-GILFD 01/23/07 08/05/09	3133XGEQ3	1365	186	100	5.2500 5.0300	5,000,000.00 5,025,750.00	5,085,937.50 101.718750000	40,833.33	SUNGARD	60,187.50
A 35104	FHLB-GILFD 02/07/07 08/05/09	3133XGEQ3	1365	186	100	5.2500 5.0220	5,000,000.00 5,026,455.00	5,085,937.50 101.718750000	40,833.33	SUNGARD	59,482.50
A 35128	FHLB-UBS 02/21/07 08/05/09	3133XGEQ3	1365	441	100	5.2500 5.0100	5,000,000.00 5,027,250.00	5,085,937.50 101.718750000	40,833.33	SUNGARD	58,687.50
A 35260	FHLB-LB 06/12/07 08/05/09	3133XGEQ3	1365	260	100	5.2500 5.2620	5,000,000.00 4,998,450.00	5,085,937.50 101.718750000	40,833.33	SUNGARD	87,487.50
A 35072	FHLB-UBS 01/23/07 08/14/09	3133MQSR6	1365	441	100	4.5000 5.0380	5,000,000.00 4,936,000.00	5,056,250.00 101.125000000	28,750.00	SUNGARD	120,250.00
A 35086	FHLB-UBS 01/26/07 08/14/09	3133MQSR6	1365	441	100	4.5000 5.1180	5,000,000.00 4,926,850.00	5,056,250.00 101.125000000	28,750.00	SUNGARD	129,400.00
A 35062	FHLB-GILFD 01/11/07 09/11/09	3133XCTF0	1365	186	100	4.3750 4.9670	5,000,000.00 4,926,600.00	5,056,250.00 101.125000000	12,152.78	SUNGARD	129,650.00
A 35076	FHLB-GILFD 01/23/07 09/11/09	3133XCTF0	1365	186	100	4.3750 5.0650	10,000,000.00 9,831,300.00	10,112,500.00 101.125000000	24,305.56	SUNGARD	281,200.00

CITY OF SAN JOSE
 TREASURY DIVISION
 INVESTMENT INVENTORY WITH MARKET VALUE

(RPTMKT)

INVESTMENTS OUTSTANDING AS OF 09/30/08
 MAJOR SORT KEY IS FUND

INVEST NUMBER	DESCRIPTION PURCHASE MATURITY DATE	CUSIP	BANK BROK	FUND SAFE	CPN RATE YTM TR	PAR/SHARES BOOK	MARKET VALUE MARKET PRICE	CURR ACCR INT PRICE SOURCE	UNREALIZED GAIN UNREALIZED LOSS
A 35087	FHLB-UBC 01/26/07 09/11/09	3133XGJ88	1365	445	1 5.2500	5,000,000.00	5,090,625.00	14,583.33	77,025.00
A 35094	FHLB-CITIG 02/01/07 09/11/09	3133XGJ88	1365	132	1 5.2500	5,000,000.00	5,013,600.00	101.8125000000	SUNGARD
A 35236	FHLB-GILFD 05/15/07 10/02/09	3133XH7E6	1365	186	1 5.0000	5,000,000.00	5,019,750.00	101.8125000000	SUNGARD
A 35053	FHLB-CALL-GILFD 01/05/07 10/16/09	3133XHFA5	1365	186	1 5.0000	5,000,000.00	5,007,300.00	101.7187500000	SUNGARD
A 35089	FHLB-CALL-GILFD 01/26/07 11/03/09	3133XHNL2	1365	186	1 5.0000	5,000,000.00	5,003,125.00	100.0625000000	SUNGARD
A 35118	FHLB-GILFD 02/16/07 11/10/09	3133X9C24	1365	186	1 5.2500	5,000,000.00	4,994,450.00	100.1875000000	SUNGARD
A 35102	FHLB-GILFD 02/05/07 11/13/09	3133MTRK6	1365	186	1 3.8600	5,000,000.00	5,035,937.50	100.7187500000	SUNGARD
A 35106	FHLB-GILFD 02/08/07 11/13/09	3133MTRK6	1365	186	1 4.0000	5,000,000.00	4,853,515.00	100.7187500000	SUNGARD
A 35059	FHLB-CS 01/11/07 12/11/09	3133XGYT5	1365	179	1 4.0000	5,000,000.00	5,043,750.00	100.8750000000	SUNGARD
A 35064	FHLB-GILFD 01/12/07 12/11/09	3133XGYT5	1365	186	1 5.0000	5,000,000.00	5,104,687.50	102.0937500000	SUNGARD
A 35071	FHLB-UBS 01/23/07 12/11/09	3133XGYT5	1365	441	1 5.0000	10,000,000.00	5,002,450.00	5,104,687.50	102.0937500000
A 35108	FHLB-GILFD 02/09/07 02/12/10	3133MWB2	1365	186	1 5.0000	5,000,000.00	9,987,200.00	102.0937500000	SUNGARD
A 35121	FHLB-UBC 02/15/07 02/12/10	3133MWB2	1365	445	1 3.8750	5,000,000.00	5,250,000.00	5,292,656.25	25,994.79
A 35814	FHLB-CALL-GILFD 09/04/08 03/02/10	3133XS3E6	1365	186	1 5.0110	10,000,000.00	5,085,402.00	100.8125000000	SUNGARD
A 35817	FHLB-GILFD 09/05/08 04/30/10	3133XQ5C2	1365	186	1 3.8750	10,000,000.00	5,000,000.00	5,040,625.00	24,756.94
A 35822	FHLB-CALL-UBC 09/09/08 06/09/10	3133XS2F4	1365	445	1 5.0070	4,844,550.00	100.8125000000	9,990,625.00	26,583.33
A 35119	FHLB-GILFD 02/15/07 08/04/10	3133XCJ38	1365	186	1 3.3000	10,000,000.00	10,001,833.33	99.9062500000	SUNGARD
A 35120	FHLB-GILFD 02/15/07 08/10/10	3133XQ5C2	1365	186	1 2.3750	10,000,000.00	9,859,375.00	99.618.06	SUNGARD
A 35160	FHLB-GILFD 03/15/07 08/10/10	3133X85H1	1365	186	1 3.0090	9,980,765.28	98.5937500000	10,308,867.19	20,506.60
A 35171	FHLB-GILFD 03/27/07 08/13/10	3133X06Q7	1365	186	1 3.2500	10,325,000.00	99.8437500000	5,126,562.50	37,604.17
A 35193	FHLB-GILFD 04/17/07 08/13/10	3133XCN66	1365	186	1 4.7500	5,000,000.00	5,126,562.50	102.5312500000	SUNGARD
A 35194	FHLB-GILFD 04/17/07 08/26/10	3133XCXV0	1365	186	1 4.7000	10,000,000.00	10,221,875.00	66,583.33	325,275.00
A 35122	FHLB-JPM 02/15/07 09/10/10	3133XGLE2	1365	325	1 5.0270	10,000,000.00	9,896,600.00	102.2187500000	SUNGARD
A 35177	FHLB-UBS 04/03/07 09/10/10	3133XGLE2	1365	441	1 4.5160	10,000,000.00	10,190,625.00	63,976.67	275,725.00
					1 4.7890	9,914,900.00	101.9062500000	5,071,875.00	26,354.17
					1 4.1250	5,000,000.00	5,071,875.00	101.4375000000	SUNGARD
					1 4.1250	10,000,000.00	10,143,750.00	52,708.33	395,850.00
					1 4.9560	9,747,900.00	101.4375000000	5,134,375.00	23,260.42
					1 4.7850	5,000,000.00	5,134,375.00	102.6875000000	SUNGARD
					1 4.8980	4,982,400.00	102.6875000000	29,895.83	298,375.00
					1 5.1250	10,036,000.00	103.3437500000	10,334,375.00	235,675.00
					1 5.1250	10,000,000.00	10,334,375.00	29,895.83	235,675.00
					100 4.8090	10,098,700.00	103.3437500000	SUNGARD	

CITY OF SAN JOSE
 TREASURY DIVISION
 INVESTMENT INVENTORY WITH MARKET VALUE

(RPTMKT)

INVESTMENTS OUTSTANDING AS OF 09/30/08
 MAJOR SORT KEY IS FUND

INVEST NUMBER	DESCRIPTION PURCHASE MATURITY DATE	CUSIP	BANK BROK	FUND SAFE	CPN YTM	RATE TR	PAR/SHARES BOOK	MARKET VALUE MARKET PRICE	CURR ACCR INT PRICE SOURCE	UNREALIZED GAIN UNREALIZED LOSS
A 35159	FHLB-UBC 03/15/07 09/21/10	3133XD6V8	1365	445	100	4.7000 4.7880	9,500,000.00 9,473,153.00	9,746,406.25 102.5937500000	12,402.78 SUNGARD	273,253.25
A 35174	FHLB-UBS 04/03/07 09/29/10	3133XGRD8	1365	441	100	5.1250 4.7400	10,000,000.00 10,122,400.00	10,318,750.00 103.1875000000	2,847.22 SUNGARD	196,350.00
A 35202	FHLB-UBS 04/23/07 09/29/10	3133XGRD8	1365	441	100	5.1250 4.8640	5,000,000.00 5,040,650.00	5,159,375.00 103.1875000000	1,423.61 SUNGARD	118,725.00
A 35197	FHLB-GILFD 04/17/07 12/10/10	3133XJHW1	1365	186	100	4.8750 4.8940	10,000,000.00 9,993,500.00	10,300,000.00 103.0000000000	150,312.50 SUNGARD	306,500.00
A 35205	FHLB-GILFD 04/23/07 12/10/10	3133XJHW1	1365	186	100	4.8750 4.8530	5,000,000.00 5,003,400.00	5,150,000.00 103.0000000000	75,156.25 SUNGARD	146,600.00
A 35497	FHLB-CALL-UBC 02/12/08 05/12/11	3133XPHY3	1365	445	100	3.4500 3.4510	9,030,000.00 9,030,000.00	9,013,068.75 99.8125000000	120,287.13 SUNGARD	-16,931.25
A 35117	FHLB-CALL-GILFD 02/15/07 10/27/11	3133XHXY7	1365	186	100	5.3000 5.3020	5,000,000.00 4,999,150.00	5,096,875.00 101.9375000000	113,361.11 SUNGARD	97,725.00
A 35622	FHLB-CALL-GILFD 05/07/08 11/07/11	3133XQUL4	1365	186	100	3.7500 3.7500	10,000,000.00 10,000,000.00	9,968,750.00 99.6875000000	150,000.00 SUNGARD	-31,250.00
A 35525	FHLB-CALL-UBC 02/29/08 02/27/12	3133XPPL2	1365	445	100	3.7500 3.8180	12,805,000.00 12,772,987.50	12,724,968.75 99.3750000000	45,351.04 SUNGARD	-48,018.75
A 35213	FHLB-CALL-UBC 05/03/07 05/03/12	3133XKNN1	1365	445	100	5.0200 5.0200	5,000,000.00 5,000,000.00	5,120,312.50 102.4062500000	103,188.89 SUNGARD	120,312.50
A 35216	FHLB-CALL-UBC 05/07/07 05/07/12	3133XKQS7	1365	445	100	5.0500 5.0500	5,000,000.00 5,000,000.00	5,125,000.00 102.5000000000	101,000.00 SUNGARD	125,000.00
A 35458	FHLB-CALL-UBC 01/24/08 01/24/13	3133XPA79	1365	445	100	3.9500 3.9500	20,000,000.00 20,000,000.00	19,850,000.00 99.2500000000	147,027.78 SUNGARD	-150,000.00
A 35467	FHLB-CALL-GILFD 01/28/08 01/28/13	3133XP4T8	1365	186	100	4.2000 4.2060	10,000,000.00 9,997,500.00	9,971,875.00 99.7187500000	73,500.00 SUNGARD	-25,625.00
A 35483	FHLB-CALL-UBC 02/05/08 02/05/13	3133XP5E0	1365	445	100	4.3000 4.3000	10,000,000.00 10,000,000.00	9,981,250.00 99.8125000000	66,888.89 SUNGARD	-18,750.00
A 35490	FHLB-CALL-UBC 02/07/08 02/07/13	3133XP6H2	1365	445	100	4.3500 4.3500	10,000,000.00 10,000,000.00	9,990,625.00 99.9062500000	65,250.00 SUNGARD	-9,375.00
A 35508	FHLB-CALL-GILFD 02/19/08 02/19/13	3133XP6E0	1365	186	100	4.0000 4.0000	20,000,000.00 20,000,000.00	19,868,750.00 99.3437500000	93,333.33 SUNGARD	-131,250.00
SUBTOTAL (Inv Type) 22 FEDERAL HOME LOAN BANKS 48.28%(M)					4.2330	471,325,000.00	475,431,876.57	4,147,655.06	6,465,511.68	-587,151.81
					4.4111	469,905,526.42	100.8713470000			
A 33798	FNMA-MISCH 01/29/04 12/15/08	31359MTR4	1365	320	100	3.3750 3.2920	5,000,000.00 5,018,400.00	4,998,437.50 99.9687500000	49,687.50 SUNGARD	-19,962.50
A 33800	FNMA-CITIG 01/29/04 12/15/08	31359MTR4	1365	132	100	3.3750 3.5730	5,000,000.00 4,955,900.00	4,998,437.50 99.9687500000	49,687.50 SUNGARD	42,537.50
A 33877	FNMA-WF 04/29/04 04/29/09	3136F5UT6	1365	451	100	4.0000 4.0000	5,000,000.00 5,000,000.00	5,018,750.00 100.3750000000	84,444.44 SUNGARD	18,750.00
SUBTOTAL (Inv Type) 23 FEDERAL NAT MORTGAGE AS 1.52%(M)					3.5837	15,000,000.00	15,015,625.00	183,819.44	61,287.50	-19,962.50
					3.6214	14,974,300.00	100.1041670000			

C I T Y O F S A N J O S E
T R E A S U R Y D I V I S I O N
I N V E S T M E N T I N V E N T O R Y W I T H M A R K E T V A L U E

PAGE: 4
RUN: 10/17/08 12:20:26

(RPTMKT)

I N V E S T M E N T S O U T S T A N D I N G A S O F 0 9 / 3 0 / 0 8
M A J O R S O R T K E Y I S F U N D

INVEST NUMBER	DESCRIPTION PURCHASE MATURITY DATE	CUSIP	BANK BROK	FUND SAFE	CPN RATE YTM TR	PAR/SHARES BOOK	MARKET VALUE MARKET PRICE	CURR ACCR INT PRICE SOURCE	UNREALIZED GAIN UNREALIZED LOSS
A 34979	FFCB-CITIG 11/15/06 10/20/08	31331VDG8	1365	1	4.5800	10,000,000.00	10,006,250.00	204,827.78	81,550.00
			132	100	4.9920	9,924,700.00	100.0625000000	SUNGARD	
A 35014	FFCB-UBC 12/05/06 10/24/08	31331THX2	1365	1	3.6250	10,000,000.00	10,003,125.00	158,090.28	202,425.00
			445	100	4.7400	9,800,700.00	100.0312500000	SUNGARD	
A 35037	FFCB-LB 12/19/06 12/29/08	31331V6A9	1365	1	5.0000	5,000,000.00	5,023,437.50	63,888.89	16,387.50
			260	100	4.9260	5,007,050.00	100.4687500000	SUNGARD	
A 35038	FFCB-JPM 12/19/06 01/05/09	31331XCF7	1365	1	5.1000	10,000,000.00	10,053,125.00	121,833.33	10,895.00
			325	100	4.8810	10,042,230.00	100.5312500000	SUNGARD	
A 35040	FFCB-GILFD 12/19/06 03/24/09	31331XEM0	1365	1	4.9000	5,000,000.00	5,039,062.50	4,763.89	36,477.50
			186	100	4.8770	5,002,585.00	100.7812500000	SUNGARD	
A 35051	FFCB-GILFD 01/05/07 03/24/09	31331XEM0	1365	1	4.9000	5,000,000.00	5,039,062.50	4,763.89	44,502.50
			186	100	4.9530	4,994,560.00	100.7812500000	SUNGARD	
A 35079	FFCB-BA 01/23/07 10/23/09	31331XBQ4	1365	1	5.0000	3,750,000.00	3,821,484.38	82,291.67	76,546.88
			40	100	5.0500	3,744,937.50	101.9062500000	SUNGARD	
A 35095	FFCB-LB 02/01/07 10/23/09	31331XBQ4	1365	1	5.0000	5,000,000.00	5,095,312.50	109,722.22	104,862.50
			260	100	5.0730	4,990,450.00	101.9062500000	SUNGARD	
A 35098	FFCB-UBS 02/05/07 10/23/09	31331XBQ4	1365	1	5.0000	5,000,000.00	5,095,312.50	109,722.22	101,712.50
			441	100	5.0480	4,993,600.00	101.9062500000	SUNGARD	
A 35235	FFCB-UBC 05/15/07 10/23/09	31331XBQ4	1365	1	5.0000	5,000,000.00	5,095,312.50	109,722.22	84,562.50
			445	100	4.9040	5,010,750.00	101.9062500000	SUNGARD	
A 35066	FFCB-GILFD 01/12/07 10/27/09	31331XJQ6	1365	1	4.8200	5,000,000.00	5,085,937.50	103,094.44	107,497.50
			186	100	4.9890	4,978,440.00	101.7187500000	SUNGARD	
A 35088	FFCB-GILFD 01/26/07 10/27/09	31331XJQ6	1365	1	4.8200	5,000,000.00	5,085,937.50	103,094.44	124,037.50
			186	100	5.1210	4,961,900.00	101.7187500000	SUNGARD	
A 35097	FFCB-GILFD 02/02/07 10/27/09	31331XJQ6	1365	1	4.8200	5,000,000.00	5,085,937.50	103,094.44	120,937.50
			186	100	5.0980	4,965,000.00	101.7187500000	SUNGARD	
A 35077	FFCB-WF 01/23/07 11/20/09	31331XEE8	1365	1	4.8500	5,000,000.00	5,089,062.50	88,243.06	114,162.50
			451	100	5.0400	4,974,900.00	101.7812500000	SUNGARD	
A 35074	FFCB-JPM 01/23/07 12/02/09	31331XCG5	1365	1	5.0800	5,000,000.00	5,106,250.00	83,961.11	103,415.00
			325	100	5.0560	5,002,835.00	102.1250000000	SUNGARD	
A 35099	FFCB-WF 02/05/07 01/11/10	31331XLF7	1365	1	4.9200	5,000,000.00	5,104,687.50	54,666.67	123,087.50
			451	100	5.0550	4,981,600.00	102.0937500000	SUNGARD	
A 35100	FFCB-GILFD 02/05/07 01/11/10	31331XLF7	1365	1	4.9200	5,000,000.00	5,104,687.50	54,666.67	123,727.50
			186	100	5.0600	4,980,960.00	102.0937500000	SUNGARD	
A 35181	FFCB-LB 04/03/07 08/06/10	31331V7K6	1365	1	4.8750	5,000,000.00	5,137,500.00	37,239.58	126,400.00
			260	100	4.8000	5,011,100.00	102.7500000000	SUNGARD	
A 35258	FFCB-GILFD 06/11/07 08/06/10	31331V7K6	1365	1	4.8750	5,000,000.00	5,137,500.00	37,239.58	201,400.00
			186	100	5.3180	4,936,100.00	102.7500000000	SUNGARD	
A 35201	FFCB-GILFD 04/23/07 08/27/10	31331TBZ3	1365	1	4.4500	1,200,000.00	1,224,750.00	5,043.33	39,702.00
			186	100	4.8560	1,185,048.00	102.0625000000	SUNGARD	
A 35843	FFCB-CALL-UBS 09/24/08 09/24/10	31331GCG2	1365	1	3.5000	12,000,000.00	11,861,250.00	8,166.67	
			441	100	3.5000	12,000,000.00	98.8437500000	SUNGARD	-138,750.00
A 35176	FFCB-UBC 04/03/07 10/26/10	31331XJR4	1365	1	4.8000	5,000,000.00	5,143,750.00	103,333.33	130,650.00
			445	100	4.7190	5,013,100.00	102.8750000000	SUNGARD	
A 35179	FFCB-GILFD 04/03/07 10/26/10	31331XJR4	1365	1	4.8000	5,000,000.00	5,143,750.00	103,333.33	143,305.00
			186	100	4.7970	5,000,445.00	102.8750000000	SUNGARD	

CITY OF SAN JOSE
 TREASURY DIVISION
 INVESTMENT INVENTORY WITH MARKET VALUE

(RPTMKT)

INVESTMENTS OUTSTANDING AS OF 09/30/08
 MAJOR SORT KEY IS FUND

INVEST NUMBER	DESCRIPTION PURCHASE MATURITY DATE	CUSIP	BANK BROK	FUND SAFE	CPN YTM	RATE TR	PAR/SHARES BOOK	MARKET VALUE MARKET PRICE	CURR ACCR INT PRICE SOURCE	UNREALIZED GAIN UNREALIZED LOSS
A 35180	FFCB-CITIG 04/03/07 10/26/10	31331XJ4	1365	132	100	4.8000 4.7900	5,000,000.00 5,001,550.00	5,143,750.00 102.875000000	103,333.33 SUNGARD	142,200.00
A 35211	FFCB-GILFD 05/01/07 11/01/10	31331XX6	1365	186	100	4.7500 4.8090	5,000,000.00 4,990,600.00	5,139,062.50 102.781250000	98,958.33 SUNGARD	148,462.50
A 35540	FFCB-CALL-UBS 03/10/08 03/10/11	31331YWL0	1365	441	100	3.7000 3.7000	15,000,000.00 15,000,000.00	14,976,562.50 99.84375000000	32,375.00 SUNGARD	-23,437.50
A 35833	FFCB-CALL-UBS 09/19/08 09/19/11	31331GBU2	1365	441	100	3.6900 3.6900	13,925,000.00 13,925,000.00	13,855,375.00 99.50000000000	17,127.75 SUNGARD	-69,625.00
A 35844	FFCB-CALL-UBC 09/29/08 09/29/11	31331GCH0	1365	445	100	3.7500 3.9370	10,000,000.00 9,947,500.00	9,940,625.00 99.40625000000	2,083.33 SUNGARD	-6,875.00
SUBTOTAL (Inv Type) 27 FEDERAL FARM CREDIT BAN 18.55%(M)						4.4689 4.5953	180,875,000.00 180,367,640.50	182,637,859.38 100.9746290000	2,108,680.78	2,508,906.38 -238,687.50
A 35218	FHLMC-GILFD 05/04/07 10/06/08	3128X4QL8	1365	186	100	4.7000 5.0260	1,795,000.00 1,786,994.30	1,795,560.94 100.0312500000	41,010.76 SUNGARD	8,566.64
A 35015	FHLMC-UBC 12/05/06 11/03/08	3128X4ST9	1365	445	100	4.9000 4.7240	5,000,000.00 5,015,695.00	5,006,250.00 100.12500000000	100,722.22 SUNGARD	-9,445.00
A 35228	FHLMC-GILFD 05/09/07 11/20/08	3128X2BP9	1365	186	100	3.9400 5.0040	1,500,000.00 1,476,750.00	1,501,406.25 100.09375000000	21,505.83 SUNGARD	24,656.25
A 35027	FHLMC-GILFD 12/13/06 02/03/09	3128X2QF5	1365	186	100	3.6250 4.8310	9,835,000.00 9,596,265.21	9,847,293.75 100.12500000000	57,439.13 SUNGARD	251,028.54
A 35078	FHLMC-WF 01/23/07 09/28/09	3128X4PB1	1365	451	100	4.6250 5.0400	4,700,000.00 4,651,308.00	4,763,156.25 101.34375000000	1,811.46 SUNGARD	111,848.25
A 35153	FHLMC-GILFD 03/15/07 08/16/10	3128X4GV7	1365	186	100	4.8750 4.7750	9,900,000.00 9,930,591.00	10,193,906.25 102.96875000000	60,328.13 SUNGARD	263,315.25
A 35155	FHLMC-BA 03/14/07 09/22/10	3128X4KF7	1365	40	100	4.7500 4.7980	2,679,000.00 2,674,847.55	2,746,812.19 102.53125000000	3,181.31 SUNGARD	71,964.64
A 35169	FHLMC-UBS 03/26/07 10/04/10	3128X4MP3	1365	441	100	4.7500 4.8050	10,475,000.00 10,456,459.25	10,789,250.00 103.00000000000	244,634.90 SUNGARD	332,790.75
A 35154	FHLMC-GILFD 03/15/07 10/13/10	3128X3YF4	1365	186	100	4.1600 4.7780	4,000,000.00 3,919,480.00	4,068,750.00 101.71875000000	77,653.33 SUNGARD	149,270.00
A 35173	FHLMC-GILFD 04/03/07 10/18/10	3128X4QK0	1365	186	100	5.0000 4.7550	9,705,000.00 9,781,446.29	10,029,510.94 103.34375000000	219,710.42 SUNGARD	248,064.65
A 35212	FHLMC-CITIG 05/01/07 10/18/10	3134A4VE1	1365	132	100	4.1250 4.7960	10,000,000.00 9,788,000.00	10,196,875.00 101.96875000000	186,770.83 SUNGARD	408,875.00
A 35225	FHLMC-GILFD 05/08/07 11/19/10	3128X3M34	1365	186	100	4.4000 4.8410	1,000,000.00 985,820.00	1,023,125.00 102.31250000000	16,133.33 SUNGARD	37,305.00
A 35230	FHLMC-GILFD 05/09/07 12/08/10	3128X2EV3	1365	186	100	4.7500 4.8500	4,236,000.00 4,222,063.56	4,363,080.00 103.00000000000	63,157.58 SUNGARD	141,016.44
A 35203	FHLMC-UBC 04/23/07 12/16/10	3128X2HT5	1365	445	100	4.5000 4.8290	9,500,000.00 9,396,089.00	9,740,468.75 102.53125000000	124,687.50 SUNGARD	344,379.75
A 35226	FHLMC-GILFD 05/08/07 12/16/10	3128X2HT5	1365	186	100	4.5000 4.8410	2,000,000.00 1,977,580.00	2,050,625.00 102.53125000000	26,250.00 SUNGARD	73,045.00
A 34914	FHLMC-CALL-CITIG 09/07/06 02/24/11	3128X4N56	1365	132	100	5.2500 5.2620	5,000,000.00 4,997,500.00	5,039,062.50 100.78125000000	26,979.17 SUNGARD	41,562.50

CITY OF SAN JOSE
TREASURY DIVISION
INVESTMENT INVENTORY WITH MARKET VALUE

(RPTMKT)

INVESTMENTS OUTSTANDING AS OF 09/30/08
MAJOR SORT KEY IS FUND

INVEST NUMBER	DESCRIPTION PURCHASE MATURITY DATE	CUSIP	BANK BROK	FUND SAFE	CPN RATE YTM TR	PAR/SHARES BOOK	MARKET VALUE MARKET PRICE	CURR ACCR INT PRICE SOURCE	UNREALIZED GAIN UNREALIZED LOSS
A 34940	FHLMC-CALL-UBC 10/06/06 10/06/11	3128X5LP1	1365	445	1 5.2500	5,000,000.00	5,001,562.50	127,604.17	4,062.50
				100	5.2620	4,997,500.00	100.0312500000	SUNGARD	
A 34969	FHLMC-CALL-WF 11/02/06 10/06/11	3128X5LP1	1365	451	1 5.2500	5,000,000.00	5,001,562.50	127,604.17	1,562.50
				100	5.2490	5,000,000.00	100.0312500000	SUNGARD	
A 35189	FHLMC-CALL-GILFD 04/16/07 01/09/12	3128X5WL8	1365	186	1 5.3000	5,000,000.00	5,026,562.50	60,361.11	28,906.50
				100	5.3090	4,997,656.00	100.5312500000	SUNGARD	
A 35141	FHLMC-CALL-UBC 03/26/07 03/26/12	3128X5N61	1365	445	1 5.0000	5,000,000.00	5,109,375.00	3,472.22	109,375.00
				100	5.0000	5,000,000.00	102.1875000000	SUNGARD	
A 35239	FHLMC-CALL-CITIG 05/18/07 04/03/12	3128X52N7	1365	132	1 5.2500	5,000,000.00	5,043,750.00	129,791.67	48,750.00
				100	5.2720	4,995,000.00	100.8750000000	SUNGARD	
SUBTOTAL (Inv Type) 30 FED HOME LOAN MORTGAGE 12.02%(M)					4.6994	116,325,000.00	118,337,945.32	1,720,809.24	2,700,345.16
					4.9240	115,647,045.16	101.7304490000		-9,445.00
A 35851	CP-DISC-BANKAMERICA-BA 09/30/08 10/01/08	0660P0K10	1365	40	1 .5000	28,414,000.00	28,414,000.00	.00	394.64
				100	.5000	28,413,605.36	100.0000000000	SUNGARD	
A 35831	CP-DISC-TOYOTA-TOY 09/16/08 10/02/08	89233GK21	1365	436	1 2.2200	54,000,000.00	53,994,450.00	.00	47,730.00
				100	2.2530	53,946,720.00	99.989722222222	SUNGARD	
A 35753	CP-DISC-UBS FIN DEL-UBS 08/07/08 10/07/08	90262CK71	1365	441	1 2.6400	10,000,000.00	9,993,833.33	.00	38,566.66
				100	2.7000	9,955,266.67	99.938333333333	SUNGARD	
A 35846	CP-DISC-WFB-WF 09/25/08 10/09/08	9497F0K92	1365	451	1 3.4000	10,000,000.00	9,991,777.78	.00	5,000.00
				100	3.4520	9,986,777.78	99.917777777778	SUNGARD	
A 35847	CP-DISC-WFB-WF 09/26/08 10/10/08	9497F0KA9	1365	451	1 3.4000	10,834,000.00	10,823,978.55	.00	4,303.51
				100	3.4520	10,819,675.04	99.907500000000	SUNGARD	
SUBTOTAL (Inv Type) 82 COMMERCIAL PAPER, DISCO 11.50%(M)					2.0420	113,248,000.00	113,218,039.66	.00	95,994.81
					2.0726	113,122,044.85	99.973544000000		
A 32936	STATE INVESTMT POOL-CTY 01/01/02 10/01/08		1235	415	1 2.7723	40,000,000.00	40,000,000.00*	-2.38	0.00
				000	2.7723	40,000,000.00	100.0000000000	BOOK	
A 33658	STATE INVESTMT POOL-RDA 10/01/03 10/01/08		1365	415	1 2.7723	40,000,000.00	40,000,000.00*	-2.10	0.00
				100	2.7723	40,000,000.00	100.0000000000	BOOK	
SUBTOTAL (Inv Type) 99 PASSBOOK & STATE POOL 8.12%(M)					2.7723	80,000,000.00	80,000,000.00	-4.48	.00
					2.7723	80,000,000.00	100.0000000000		
SUBTOTAL (Fund) 1 INVESTMENT FUNDS 89.40%(M)					3.9475	976,773,000.00	984,641,345.93	8,160,960.04	11,832,045.53
					4.0877	974,016,556.93	100.8055450000		-855,246.81

* MARKET = BOOK LESS PURCHASE INTEREST

CITY OF SAN JOSE
 TREASURY DIVISION
 INVESTMENT INVENTORY WITH MARKET VALUE

(RPTMKT)

INVESTMENTS OUTSTANDING AS OF 09/30/08
 MAJOR SORT KEY IS FUND

INVEST NUMBER	DESCRIPTION PURCHASE MATURITY DATE	CUSIP	BANK BROK	FUND SAFE	CPN YTM	RATE TR	PAR/SHARES BOOK	MARKET VALUE MARKET PRICE	CURR ACCR PRICE	INT SOURCE	UNREALIZED UNREALIZED	GAIN LOSS
A 35773	CP-DISC-UBS FIN DEL-UBS 08/18/08 11/18/08	90262CLJ4	1365 441	8 100	2.8200 2.8800		70,000.00 69,495.53	69,654.67 99.506666666667		.00 SUNGARD		159.14
SUBTOTAL (Inv Type) 82 COMMERCIAL PAPER, DISCO100.00%(M)					2.8200 2.8800		70,000.00 69,495.53	69,654.67 99.50666700000		.00		159.14
SUBTOTAL (Fund) 8 EVERGREEN CREEK					.01%(M)		70,000.00 69,495.53	69,654.67 99.50666700000		.00		159.14

C I T Y O F S A N J O S E
T R E A S U R Y D I V I S I O N
I N V E S T M E N T I N V E N T O R Y W I T H M A R K E T V A L U E

PAGE: 8
RUN: 10/17/08 12:20:26

(RPTMKT)

I N V E S T M E N T S O U T S T A N D I N G A S O F 0 9 / 3 0 / 0 8
M A J O R S O R T K E Y I S F U N D

INVEST NUMBER	DESCRIPTION PURCHASE MATURITY DATE	CUSIP	BANK BROK	FUND SAFE	CPN RATE YTM TR	PAR/SHARES BOOK	MARKET VALUE MARKET PRICE	CURR ACCR INT PRICE SOURCE	UNREALIZED GAIN UNREALIZED LOSS
A 35774	CP-DISC-UBS FIN DEL-UBS 08/18/08 11/18/08	90262CLJ4	1365 441	33 100	2.8200 2.8800	65,000.00 64,531.57	64,679.33 99.506666666667	.00 SUNGARD	147.76
SUBTOTAL (Inv Type) 82 COMMERCIAL PAPER, DISCO100.00%(M)					2.8200 2.8800	65,000.00 64,531.57	64,679.33 99.50666700000	.00	147.76
SUBTOTAL (Fund) 33 Reassessment Revenue Bonds, .01%(M)					2.8200 2.8800	65,000.00 64,531.57	64,679.33 99.50666700000	.00	147.76

CITY OF SAN JOSE
 TREASURY DIVISION
 INVESTMENT INVENTORY WITH MARKET VALUE

(RPTMKT)

INVESTMENTS OUTSTANDING AS OF 09/30/08
 MAJOR SORT KEY IS FUND

INVEST NUMBER	DESCRIPTION PURCHASE MATURITY DATE	CUSIP	BANK BROK	FUND SAFE	CPN RATE YTM TR	PAR/SHARES BOOK	MARKET VALUE MARKET PRICE	CURR ACCR INT PRICE SOURCE	UNREALIZED GAIN UNREALIZED LOSS
A 35721	FHLB-DISC-UBS 07/25/08 10/01/08	313384H93	1365 441	34 100	2.3700 2.4140	836,000.00 832,257.51	836,000.00 100.0000000000	.00 SUNGARD	3,742.49
SUBTOTAL (Inv Type) 43 FHLB DISCOUNT NOTES 100.00%(M)					2.3700 2.4140	836,000.00 832,257.51	836,000.00 100.0000000000	.00	3,742.49
SUBTOTAL (Fund) 34 CSJ/CSC Jt Pwr .08%(M)					2.3700 2.4140	836,000.00 832,257.51	836,000.00 100.0000000000	.00	3,742.49

CITY OF SAN JOSE
 TREASURY DIVISION
 INVESTMENT INVENTORY WITH MARKET VALUE

(RPTMKT)

INVESTMENTS OUTSTANDING AS OF 09/30/08
 MAJOR SORT KEY IS FUND

INVEST NUMBER	DESCRIPTION PURCHASE MATURITY DATE	CUSIP	BANK BROK	FUND SAFE	CPN RATE YTM TR	PAR/SHARES BOOK	MARKET VALUE MARKET PRICE	CURR ACCR INT PRICE SOURCE	UNREALIZED GAIN UNREALIZED LOSS
A 35799	FHLB-DISC-BA 08/27/08 10/27/08	313384M30	1365 40	40 100	2.4200 2.4700	350,000.00 348,564.81	349,890.63 99.96875000000	.00 SUNGARD	1,325.82
SUBTOTAL (Inv Type) 43 FHLB DISCOUNT NOTES 100.00%(M)					2.4200 2.4700	350,000.00 348,564.81	349,890.63 99.96875000000	.00	1,325.82
SUBTOTAL (Fund) 40 '97 Community Facility Dist .03%(M)					2.4200 2.4700	350,000.00 348,564.81	349,890.63 99.96875000000	.00	1,325.82

CITY OF SAN JOSE
 TREASURY DIVISION
 INVESTMENT INVENTORY WITH MARKET VALUE

(RPTMKT)

INVESTMENTS OUTSTANDING AS OF 09/30/08
 MAJOR SORT KEY IS FUND

INVEST NUMBER	DESCRIPTION PURCHASE MATURITY DATE	CUSIP	BANK BROK	FUND SAFE	CPN RATE YTM TR	PAR/SHARES BOOK	MARKET VALUE MARKET PRICE	CURR ACCR INT PRICE SOURCE	UNREALIZED GAIN UNREALIZED LOSS
A 35386	SERIES 2007-RDA		130	54	2.7723	115,402,671.33	115,402,671.33*	.00	0.00
	11/08/07 10/01/08		415	100	2.7723	115,402,671.33	100.0000000000	BOOK	
SUBTOTAL (Inv Type) 99 PASSBOOK & STATE POOL 100.00%(M)					2.7723	115,402,671.33	115,402,671.33	.00	.00
					2.7723	115,402,671.33	100.0000000000		
SUBTOTAL (Fund) 54 RDA SERIES 2007 10.48%(M)					2.7723	115,402,671.33	115,402,671.33	.00	.00
					2.7723	115,402,671.33	100.0000000000		
GRAND TOTAL					3.8213	1093496671.33	1101364241.89	8,160,960.04	11,837,420.74
					3.9465	1090734077.68	100.7194870000		-855,246.81

* MARKET = BOOK LESS PURCHASE INTEREST

SECTION E

DETAIL OF INVESTMENT ACTIVITY

This report summarizes investment activity during the report period by type of activity rather than by type of security. The report shows all interest received during the report period, and all maturities, purchases and sales. The report also shows all “paydowns” on securities on which principal is amortized rather than due at maturity (e.g. Federal Home Loan Mortgage Corporation securities).

The last part of the report shows the number of transactions placed with each dealer and includes the total dollar amount of transactions per dealer.



C I T Y O F S A N J O S E
T R E A S U R Y D I V I S I O N
* ACTIVE TRANSACTIONS *
DETAIL TRANSACTION REPORT - FIXED INCOME
09/01/08 TO 09/30/08
SETTLEMENT DATE BASIS
FUND: 1 INVESTMENT FUNDS

PAGE: 1
RUN: 10/16/08 09:28:43

INV #	DESCRIPTION/POOL#	BANK BROK	MATURITY	TRADE/	TXN COUPON	PAR VALUE	BOOK VALUE	(INTEREST)	(GAIN)/LOSS
USER	MEMO	CASH DATE	/ENTRY	SETTLE	TYP YIELD	ORIGINAL FACE	PREM / (DISC)	AMORT/(ACCRET)	SETTLEMENT
32936	STATE INVESTMT POOL-CT	1235	10/01/08	09/30/08	INTR	2.772		-279,557.06	
uyen		09/30/08	10/15/08	09/30/08		2.772			279,557.06
33658	STATE INVESTMT POOL-RD	1365	10/01/08	09/30/08	INTR	2.772		-279,557.00	
uyen		09/30/08	10/15/08	09/30/08		2.772			279,557.00
34957	FHLMC-CALL-CITIG	1365	09/02/11	09/02/08	INTR	5.450		-136,250.00	
snj101		09/02/08	09/03/08	09/02/08		5.507			136,250.00
35039	FHLB-GILFD	1365	03/13/09	09/13/08	INTR	4.750		-237,500.00	
snj101		09/13/08	09/16/08	09/13/08		4.885			237,500.00
35040	FFCB-GILFD	1365	03/24/09	09/24/08	INTR	4.900		-122,500.00	
snj101		09/24/08	09/25/08	09/24/08		4.877			122,500.00
35051	FFCB-GILFD	1365	03/24/09	09/24/08	INTR	4.900		-122,500.00	
snj101		09/24/08	09/25/08	09/24/08		4.953			122,500.00
35062	FHLB-GILFD	1365	09/11/09	09/11/08	INTR	4.375		-109,375.00	
snj101		09/11/08	09/12/08	09/11/08		4.967			109,375.00
35076	FHLB-GILFD	1365	09/11/09	09/11/08	INTR	4.375		-218,750.00	
snj101		09/11/08	09/12/08	09/11/08		5.065			218,750.00
35078	FHLMC-WF	1365	09/28/09	09/28/08	INTR	4.625		-108,687.50	
snj101		09/28/08	09/30/08	09/28/08		5.040			108,687.50
35087	FHLB-UBC	1365	09/11/09	09/11/08	INTR	5.250		-131,250.00	
snj101		09/11/08	09/12/08	09/11/08		5.134			131,250.00
35094	FHLB-CITIG	1365	09/11/09	09/11/08	INTR	5.250		-131,250.00	
snj101		09/11/08	09/12/08	09/11/08		5.083			131,250.00
35122	FHLB-JPM	1365	09/10/10	09/10/08	INTR	5.125		-256,250.00	
snj101		09/10/08	09/11/08	09/10/08		5.012			256,250.00
35141	FHLMC-CALL-UBC	1365	03/26/12	09/26/08	INTR	5.000		-125,000.00	
snj101		09/26/08	09/29/08	09/26/08		5.000			125,000.00
35155	FHLMC-BA	1365	09/22/10	09/22/08	INTR	4.750		-63,626.25	
snj101		09/22/08	09/23/08	09/22/08		4.798			63,626.25
35159	FHLB-UBC	1365	09/21/10	09/21/08	INTR	4.700		-223,250.00	
snj101		09/21/08	09/23/08	09/21/08		4.788			223,250.00
35174	FHLB-UBS	1365	09/29/10	09/29/08	INTR	5.125		-256,250.00	
snj101		09/29/08	09/30/08	09/29/08		4.740			256,250.00
35177	FHLB-UBS	1365	09/10/10	09/10/08	INTR	5.125		-256,250.00	
snj101		09/10/08	09/11/08	09/10/08		4.809			256,250.00
35186	FHLMC-CALL-LB	1365	03/02/12	09/02/08	INTR	5.400		-135,000.00	
snj101		09/02/08	09/03/08	09/02/08		5.399			135,000.00
35202	FHLB-UBS	1365	09/29/10	09/29/08	INTR	5.125		-128,125.00	
snj101		09/29/08	09/30/08	09/29/08		4.864			128,125.00
35540	FFCB-CALL-UBS	1365	03/10/11	09/10/08	INTR	3.700		-277,500.00	
snj101		09/10/08	09/11/08	09/10/08		3.700			277,500.00
35741	DREYFUS MMF-WF-1	1365	10/01/08	09/01/08	INTR	2.153		-2,000.21	
uyen		09/01/08	09/08/08	09/01/08		2.153			2,000.21
				09/25/08	INTR	2.063		-1,486.45	
maria		09/25/08	10/01/08	09/25/08		2.063			1,486.45

C I T Y O F S A N J O S E
T R E A S U R Y D I V I S I O N
D E T A I L T R A N S A C T I O N R E P O R T - F I X E D I N C O M E
0 9 / 0 1 / 0 8 T O 0 9 / 3 0 / 0 8
S E T T L E M E N T D A T E B A S I S
F U N D : 1 I N V E S T M E N T F U N D S

* ACTIVE TRANSACTIONS *

INV #	DESCRIPTION/POOL#	BANK	BROK	MATURITY	TRADE/	TXN	COUPON	PAR VALUE	BOOK VALUE	(INTEREST)	(GAIN)/LOSS
USER	MEMO	CASH	DATE	/ENTRY	SETTLE	TYP	YIELD	ORIGINAL FACE	PREM / (DISC)	AMORT/(ACCRET)	SETTLEMENT
SUBTOTAL (Txn Typ) INTR				ASSETS				3.990		-3,601,914.47	
								4.008			3,601,914.47
34957	FHLMC-CALL-CITIG	1365	132	09/02/11	09/02/08	CALL	5.450	-5,000,000.00	-4,987,500.00		-12,500.00
snj101				09/03/08	09/02/08		5.507		12,500.00		5,000,000.00
35186	FHLMC-CALL-LB	1365	260	03/02/12	09/02/08	CALL	5.400	-5,000,000.00	-5,000,000.00		
snj101				09/03/08	09/02/08		5.399				5,000,000.00
SUBTOTAL (Txn Typ) CALL				ASSETS				5.425	-10,000,000.00	-9,987,500.00	-12,500.00
								5.453		12,500.00	10,000,000.00
34925	FHLB-CITIG	1365	132	09/12/08	09/12/08	MAT	4.250	-5,000,000.00	-5,000,000.00	-106,250.00	
snj101				09/15/08	09/12/08		5.082				5,106,250.00
34942	FHLB-BA	1365	40	09/12/08	09/12/08	MAT	5.000	-5,000,000.00	-5,000,000.00	-125,000.00	
snj101				09/15/08	09/12/08		4.951				5,125,000.00
34980	FHLB-GILFD	1365	186	09/12/08	09/12/08	MAT	5.000	-10,000,000.00	-10,000,000.00	-250,000.00	
snj101				09/15/08	09/12/08		4.998				10,250,000.00
35001	FFCB-GILFD	1365	186	09/08/08	09/08/08	MAT	5.150	-9,500,000.00	-9,500,000.00	-244,625.00	
snj101				09/09/08	09/08/08		4.949				9,744,625.00
35003	FHLB-UBC	1365	445	09/12/08	09/12/08	MAT	4.625	-4,600,000.00	-4,600,000.00	-106,375.00	
snj101				09/15/08	09/12/08		4.945				4,706,375.00
35009	FHLB-GILFD	1365	186	09/26/08	09/26/08	MAT	4.250	-10,000,000.00	-10,000,000.00	-212,500.00	
snj101				09/29/08	09/26/08		4.858				10,212,500.00
35238	FHLMC-GILFD	1365	186	09/19/08	09/19/08	MAT	4.480	-5,000,000.00	-5,000,000.00	-112,000.00	
snj101				09/22/08	09/19/08		5.112				5,112,000.00
35741	DREYFUS MMF-WF-1	1365	451	10/01/08	09/25/08	MAT	2.063	-1,095,715.68	-1,095,715.68		
maria				10/01/08	09/25/08		2.063				1,095,715.68
35751	CP-DISC-UBS FIN DEL-UB	1365	441	09/15/08	09/15/08	MAT	2.465	-10,000,000.00	-10,000,000.00		
snj101				09/16/08	09/15/08		2.506				10,000,000.00
35752	CP-DISC-UBS FIN DEL-UB	1365	441	09/29/08	09/29/08	MAT	2.575	-10,000,000.00	-10,000,000.00		
snj101				09/30/08	09/29/08		2.621				10,000,000.00
35754	CP-DISC-UBS FIN DEL-UB	1365	441	09/02/08	09/02/08	MAT	2.255	-10,000,000.00	-10,000,000.00		
snj101				09/03/08	09/02/08		2.300				10,000,000.00
35803	CP-DISC-WFB-WF	1365	451	09/02/08	09/02/08	MAT	2.030	-50,300,000.00	-50,300,000.00		
snj101				09/03/08	09/02/08		2.059				50,300,000.00
35804	CP-DISC-TOYOTA-TOY	1365	436	09/02/08	09/02/08	MAT	2.050	-54,000,000.00	-54,000,000.00		
snj101				09/03/08	09/02/08		2.079				54,000,000.00
35805	FHLB-DISC-WF	1365	451	09/02/08	09/02/08	MAT	1.750	-3,500,000.00	-3,500,000.00		
snj101				09/03/08	09/02/08		1.780				3,500,000.00
35806	CP-DISC-BANKAMERICA-BA	1365	40	09/03/08	09/03/08	MAT	2.020	-52,069,000.00	-52,069,000.00		
snj101				09/04/08	09/03/08		2.048				52,069,000.00

* ACTIVE TRANSACTIONS *

C I T Y O F S A N J O S E
T R E A S U R Y D I V I S I O N
D E T A I L T R A N S A C T I O N R E P O R T - F I X E D I N C O M E
0 9 / 0 1 / 0 8 T O 0 9 / 3 0 / 0 8
S E T T L E M E N T D A T E B A S I S
F U N D : 1 I N V E S T M E N T F U N D S

PAGE: 3

RUN: 10/16/08 09:28:43

INV #	DESCRIPTION/POOL#	BANK	BROK	MATURITY	TRADE/	TXN	COUPON	PAR VALUE	BOOK VALUE	(INTEREST)	(GAIN)/LOSS
USER	MEMO	CASH	DATE	/ENTRY	SETTLE	TYP	YIELD	ORIGINAL FACE	PREM / (DISC)	AMORT/(ACCRET)	SETTLEMENT
35807	CP-DISC-TOYOTA-TOY	1365	436	09/03/08	09/03/08	MAT	2.060	-54,000,000.00	-54,000,000.00		
snj101				09/04/08	09/03/08		2.089				54,000,000.00
35808	FHLB-DISC-WF	1365	451	09/03/08	09/03/08	MAT	1.950	-10,000,000.00	-10,000,000.00		
snj101				09/04/08	09/03/08		1.977				10,000,000.00
35809	CP-DISC-UBS FIN DEL-UB	1365	441	09/04/08	09/04/08	MAT	2.020	-8,654,000.00	-8,654,000.00		
snj101				09/05/08	09/04/08		2.048				8,654,000.00
35810	CP-DISC-BANKAMERICA-BA	1365	40	09/04/08	09/04/08	MAT	2.020	-54,000,000.00	-54,000,000.00		
snj101				09/05/08	09/04/08		2.048				54,000,000.00
35811	CP-DISC-TOYOTA-TOY	1365	436	09/04/08	09/04/08	MAT	2.020	-54,000,000.00	-54,000,000.00		
snj101				09/05/08	09/04/08		2.048				54,000,000.00
35812	CP-DISC-TOYOTA-TOY	1365	436	09/05/08	09/05/08	MAT	2.060	-52,880,000.00	-52,880,000.00		
snj101				09/08/08	09/05/08		2.089				52,880,000.00
35813	CP-DISC-BANKAMERICA-BA	1365	40	09/05/08	09/05/08	MAT	2.060	-54,000,000.00	-54,000,000.00		
snj101				09/08/08	09/05/08		2.089				54,000,000.00
35815	CP-DISC-BANKAMERICA-BA	1365	40	09/08/08	09/08/08	MAT	2.050	-54,000,000.00	-54,000,000.00		
snj101				09/09/08	09/08/08		2.079				54,000,000.00
35816	CP-DISC-TOYOTA-TOY	1365	436	09/08/08	09/08/08	MAT	2.040	-42,131,000.00	-42,131,000.00		
snj101				09/09/08	09/08/08		2.069				42,131,000.00
35818	CP-DISC-TOYOTA-TOY	1365	436	09/16/08	09/16/08	MAT	2.150	-54,000,000.00	-54,000,000.00		
snj101				09/17/08	09/16/08		2.181				54,000,000.00
35819	CP-DISC-UBS FIN DEL -U	1365	441	09/09/08	09/09/08	MAT	2.000	-5,763,000.00	-5,763,000.00		
snj101				09/10/08	09/09/08		2.000				5,763,000.00
35820	CP-DISC-BANKAMERICA-BA	1365	40	09/09/08	09/09/08	MAT	2.040	-54,000,000.00	-54,000,000.00		
snj101				09/10/08	09/09/08		2.068				54,000,000.00
35821	CP-DISC-BANKAMERICA-BA	1365	40	09/10/08	09/10/08	MAT	2.000	-53,559,000.00	-53,559,000.00		
snj101				09/11/08	09/10/08		2.028				53,559,000.00
35823	CP-DISC-BANKAMERICA-BA	1365	40	09/11/08	09/11/08	MAT	2.000	-43,244,000.00	-43,244,000.00		
snj101				09/12/08	09/11/08		2.028				43,244,000.00
35824	CP-DISC-UBS FIN DEL-UB	1365	441	09/12/08	09/12/08	MAT	2.000	-3,800,000.00	-3,800,000.00		
snj101				09/15/08	09/12/08		2.028				3,800,000.00
35825	CP-DISC-WFB-WF	1365	451	09/12/08	09/12/08	MAT	2.000	-54,000,000.00	-54,000,000.00		
snj101				09/15/08	09/12/08		2.028				54,000,000.00
35826	FHLB-DISC-WF	1365	451	09/15/08	09/15/08	MAT	2.060	-50,000,000.00	-50,000,000.00		
snj101				09/16/08	09/15/08		2.089				50,000,000.00
35827	FHLB-DISC-WF	1365	451	09/15/08	09/15/08	MAT	2.060	-16,673,000.00	-16,673,000.00		
snj101				09/16/08	09/15/08		2.089				16,673,000.00
35828	FHLB-DISC-WF	1365	451	09/16/08	09/16/08	MAT	2.000	-66,370,000.00	-66,370,000.00		
snj101				09/17/08	09/16/08		2.033				66,370,000.00
35829	FHLB-DISC- WF	1365	451	09/17/08	09/17/08	MAT	1.900	-11,316,000.00	-11,316,000.00		
snj101				09/18/08	09/17/08		1.926				11,316,000.00
35830	CP-DISC-BANKAMERICA-BA	1365	40	09/23/08	09/23/08	MAT	3.000	-7,065,000.00	-7,065,000.00		
snj101				09/24/08	09/23/08		3.043				7,065,000.00
35832	CP-DISC-GE CAPITAL COR	1365	187	09/17/08	09/17/08	MAT	2.000	-54,000,000.00	-54,000,000.00		
snj101				09/18/08	09/17/08		2.028				54,000,000.00

C I T Y O F S A N J O S E
T R E A S U R Y D I V I S I O N
DETAIL TRANSACTION REPORT - FIXED INCOME
09/01/08 TO 09/30/08
SETTLEMENT DATE BASIS

* ACTIVE TRANSACTIONS *

FUND: 1 INVESTMENT FUNDS

INV #	DESCRIPTION/POOL#	BANK	BROK	MATURITY	TRADE/	TXN	COUPON	PAR VALUE	BOOK VALUE	(INTEREST)	(GAIN)/LOSS
USER	MEMO	CASH	DATE	/ENTRY	SETTLE	TYP	YIELD	ORIGINAL FACE	PREM / (DISC)	AMORT/(ACCRET)	SETTLEMENT
35834	CP-DISC-GE CAPITAL COR	1365	187	09/18/08	09/18/08	MAT	2.000	-50,000,000.00	-50,000,000.00		
snj101				09/19/08	09/18/08		2.028				50,000,000.00
35835	CP-DISC-WFB-WF	1365	451	09/18/08	09/18/08	MAT	1.750	-17,039,000.00	-17,039,000.00		
snj101				09/19/08	09/18/08		1.774				17,039,000.00
35836	CP-DISC- WFB-WF	1365	451	09/19/08	09/19/08	MAT	2.000	-50,000,000.00	-50,000,000.00		
snj101				09/22/08	09/19/08		2.028				50,000,000.00
35837	CP-DISC-GE CAPITAL COR	1365	187	09/19/08	09/19/08	MAT	2.000	-17,307,000.00	-17,307,000.00		
snj101				09/22/08	09/19/08		2.028				17,307,000.00
35838	FHLB-DISC-WF	1365	451	09/22/08	09/22/08	MAT	1.700	-52,053,000.00	-52,053,000.00		
snj101				09/23/08	09/22/08		1.724				52,053,000.00
35839	CP-DISC-WFB-WF	1365	451	09/23/08	09/23/08	MAT	2.000	-50,578,000.00	-50,578,000.00		
snj101				09/24/08	09/23/08		2.028				50,578,000.00
35840	CP-DISC-BANKAMERICA-BA	1365	40	09/24/08	09/24/08	MAT	1.880	-50,000,000.00	-50,000,000.00		
snj101				09/24/08	09/24/08		1.906				50,000,000.00
35841	CP-DISC-GE CAPITAL COR	1365	187	09/24/08	09/24/08	MAT	1.500	-4,792,000.00	-4,792,000.00		
snj101				09/25/08	09/24/08		1.521				4,792,000.00
35842	CP-DISC-WFB-WF	1365	451	09/25/08	09/25/08	MAT	1.000	-36,968,000.00	-36,968,000.00		
snj101				09/26/08	09/25/08		1.014				36,968,000.00
35845	CP-DISC-WFB-WF	1365	451	09/26/08	09/26/08	MAT	1.500	-31,665,000.00	-31,665,000.00		
snj101				09/29/08	09/26/08		1.530				31,665,000.00
35848	CP-DISC-BANKAMERICA-BA	1365	40	09/29/08	09/29/08	MAT	1.000	-25,000,000.00	-25,000,000.00		
snj101				09/30/08	09/29/08		1.014				25,000,000.00
35850	CP-DISC-BANKAMERICA-BA	1365	40	09/30/08	09/30/08	MAT	.750	-8,147,000.00	-8,147,000.00		
snj101				10/01/08	09/30/08		.760				8,147,000.00
SUBTOTAL (Txn Typ) MAT						ASSETS	2.047	-1491068715.68	-1491068715.68	-1,156,750.00	1492225465.68
							2.083				
34925	FHLB-CITIG	1365		09/12/08	09/12/08	AMRT	4.250		78,100.00		
snj101				09/15/08	09/12/08		5.082			-78,100.00	
34942	FHLB-BA	1365		09/12/08	09/12/08	AMRT	5.000		-4,300.00		
snj101				09/15/08	09/12/08		4.951			4,300.00	
34980	FHLB-GILFD	1365		09/12/08	09/12/08	AMRT	5.000		-400.00		
snj101				09/15/08	09/12/08		4.998			400.00	
35001	FFCB-GILFD	1365		09/08/08	09/08/08	AMRT	5.150		-31,350.00		
snj101				09/09/08	09/08/08		4.949			31,350.00	
35003	FHLB-UBC	1365		09/12/08	09/12/08	AMRT	4.625		25,258.60		
snj101				09/15/08	09/12/08		4.945			-25,258.60	
35009	FHLB-GILFD	1365		09/26/08	09/26/08	AMRT	4.250		105,320.00		
snj101				09/29/08	09/26/08		4.858			-105,320.00	
35238	FHLB-GILFD	1365		09/19/08	09/19/08	AMRT	4.480		40,800.00		
snj101				09/22/08	09/19/08		5.112			-40,800.00	
35751	CP-DISC-UBS FIN DEL-UB	1365		09/15/08	09/15/08	AMRT	2.465		26,704.17		
snj101				09/16/08	09/15/08		2.506			-26,704.17	

* ACTIVE TRANSACTIONS *

C I T Y O F S A N J O S E
T R E A S U R Y D I V I S I O N
DETAIL TRANSACTION REPORT - FIXED INCOME
09/01/08 TO 09/30/08
SETTLEMENT DATE BASIS
FUND: 1 INVESTMENT FUNDS

PAGE: 5

RUN: 10/16/08 09:28:43

INV #	DESCRIPTION/POOL#	BANK	BROK	MATURITY	TRADE/	TXN	COUPON	PAR VALUE	BOOK VALUE	(INTEREST)	(GAIN)/LOSS
USER	MEMO	CASH	DATE	/ENTRY	SETTLE	TYP	YIELD	ORIGINAL FACE	PREM / (DISC)	AMORT/(ACCRET)	SETTLEMENT
35752	CP-DISC-UBS FIN DEL-UB	1365		09/29/08	09/29/08	AMRT	2.575		37,909.72		
snj101				09/30/08	09/29/08		2.621			-37,909.72	
35754	CP-DISC-UBS FIN DEL-UB	1365		09/02/08	09/02/08	AMRT	2.255		15,659.72		
snj101				09/03/08	09/02/08		2.300			-15,659.72	
35803	CP-DISC-WFB-WF	1365		09/02/08	09/02/08	AMRT	2.030		11,345.44		
snj101				09/03/08	09/02/08		2.059			-11,345.44	
35804	CP-DISC-TOYOTA-TOY	1365		09/02/08	09/02/08	AMRT	2.050		12,300.00		
snj101				09/03/08	09/02/08		2.079			-12,300.00	
35805	FHLB-DISC-WF	1365		09/02/08	09/02/08	AMRT	1.750		680.56		
snj101				09/03/08	09/02/08		1.780			-680.56	
35806	CP-DISC-BANKAMERICA-BA	1365		09/03/08	09/03/08	AMRT	2.020		2,921.65		
snj101				09/04/08	09/03/08		2.048			-2,921.65	
35807	CP-DISC-TOYOTA-TOY	1365		09/03/08	09/03/08	AMRT	2.060		3,090.00		
snj101				09/04/08	09/03/08		2.089			-3,090.00	
35808	FHLB-DISC-WF	1365		09/03/08	09/03/08	AMRT	1.950		541.67		
snj101				09/04/08	09/03/08		1.977			-541.67	
35809	CP-DISC-UBS FIN DEL-UB	1365		09/04/08	09/04/08	AMRT	2.020		485.59		
snj101				09/05/08	09/04/08		2.048			-485.59	
35810	CP-DISC-BANKAMERICA-BA	1365		09/04/08	09/04/08	AMRT	2.020		3,030.00		
snj101				09/05/08	09/04/08		2.048			-3,030.00	
35811	CP-DISC-TOYOTA-TOY	1365		09/04/08	09/04/08	AMRT	2.020		3,030.00		
snj101				09/05/08	09/04/08		2.048			-3,030.00	
35812	CP-DISC-TOYOTA-TOY	1365		09/05/08	09/05/08	AMRT	2.060		3,025.91		
snj101				09/08/08	09/05/08		2.089			-3,025.91	
35813	CP-DISC-BANKAMERICA-BA	1365		09/05/08	09/05/08	AMRT	2.060		3,090.00		
snj101				09/08/08	09/05/08		2.089			-3,090.00	
35815	CP-DISC-BANKAMERICA-BA	1365		09/08/08	09/08/08	AMRT	2.050		9,225.00		
snj101				09/09/08	09/08/08		2.079			-9,225.00	
35816	CP-DISC-TOYOTA-TOY	1365		09/08/08	09/08/08	AMRT	2.040		7,162.27		
snj101				09/09/08	09/08/08		2.069			-7,162.27	
35818	CP-DISC-TOYOTA-TOY	1365		09/16/08	09/16/08	AMRT	2.150		25,800.00		
snj101				09/17/08	09/16/08		2.181			-25,800.00	
35819	CP-DISC-UBS FIN DEL -U	1365		09/09/08	09/09/08	AMRT	2.000		320.17		
snj101				09/10/08	09/09/08		2.000			-320.17	
35820	CP-DISC-BANKAMERICA-BA	1365		09/09/08	09/09/08	AMRT	2.040		3,060.00		
snj101				09/10/08	09/09/08		2.068			-3,060.00	
35821	CP-DISC-BANKAMERICA-BA	1365		09/10/08	09/10/08	AMRT	2.000		2,975.50		
snj101				09/11/08	09/10/08		2.028			-2,975.50	
35823	CP-DISC-BANKAMERICA-BA	1365		09/11/08	09/11/08	AMRT	2.000		2,402.44		
snj101				09/12/08	09/11/08		2.028			-2,402.44	
35824	CP-DISC-UBS FIN DEL-UB	1365		09/12/08	09/12/08	AMRT	2.000		211.11		
snj101				09/15/08	09/12/08		2.028			-211.11	
35825	CP-DISC-WFB-WF	1365		09/12/08	09/12/08	AMRT	2.000		3,000.00		
snj101				09/15/08	09/12/08		2.028			-3,000.00	

* ACTIVE TRANSACTIONS *

C I T Y O F S A N J O S E
T R E A S U R Y D I V I S I O N
DETAIL TRANSACTION REPORT - FIXED INCOME
09/01/08 TO 09/30/08
SETTLEMENT DATE BASIS
FUND: 1 INVESTMENT FUNDS

PAGE: 6

RUN: 10/16/08 09:28:43

INV # USER	DESCRIPTION/POOL# MEMO	BANK CASH	BROK DATE	MATURITY /ENTRY	TRADE/ SETTLE	TXN TYP	COUPON YIELD	PAR VALUE ORIGINAL FACE	BOOK VALUE PREM / (DISC)	(INTEREST) AMORT/(ACCRET)	(GAIN)/LOSS SETTLEMENT
35826	FHLB-DISC-WF	1365		09/15/08	09/15/08	AMRT	2.060		8,583.33		
snj101				09/16/08	09/15/08		2.089			-8,583.33	
35827	FHLB-DISC-WF	1365		09/15/08	09/15/08	AMRT	2.060		2,862.20		
snj101				09/16/08	09/15/08		2.089			-2,862.20	
35828	FHLB-DISC-WF	1365		09/16/08	09/16/08	AMRT	2.000		3,687.22		
snj101				09/17/08	09/16/08		2.033			-3,687.22	
35829	FHLB-DISC- WF	1365		09/17/08	09/17/08	AMRT	1.900		597.23		
snj101				09/18/08	09/17/08		1.926			-597.23	
35830	CP-DISC-BANKAMERICA-BA	1365		09/23/08	09/23/08	AMRT	3.000		4,121.25		
snj101				09/24/08	09/23/08		3.043			-4,121.25	
35832	CP-DISC-GE CAPITAL COR	1365		09/17/08	09/17/08	AMRT	2.000		3,000.00		
snj101				09/18/08	09/17/08		2.028			-3,000.00	
35834	CP-DISC-GE CAPITAL COR	1365		09/18/08	09/18/08	AMRT	2.000		2,777.78		
snj101				09/19/08	09/18/08		2.028			-2,777.78	
35835	CP-DISC-WFB-WF	1365		09/18/08	09/18/08	AMRT	1.750		828.28		
snj101				09/19/08	09/18/08		1.774			-828.28	
35836	CP-DISC- WFB-WF	1365		09/19/08	09/19/08	AMRT	2.000		2,777.78		
snj101				09/22/08	09/19/08		2.028			-2,777.78	
35837	CP-DISC-GE CAPITAL COR	1365		09/19/08	09/19/08	AMRT	2.000		961.50		
snj101				09/22/08	09/19/08		2.028			-961.50	
35838	FHLB-DISC-WF	1365		09/22/08	09/22/08	AMRT	1.700		7,374.17		
snj101				09/23/08	09/22/08		1.724			-7,374.17	
35839	CP-DISC-WFB-WF	1365		09/23/08	09/23/08	AMRT	2.000		2,809.89		
snj101				09/24/08	09/23/08		2.028			-2,809.89	
35840	CP-DISC-BANKAMERICA-BA	1365		09/24/08	09/24/08	AMRT	1.880		2,611.11		
snj101				09/25/08	09/24/08		1.906			-2,611.11	
35841	CP-DISC-GE CAPITAL COR	1365		09/24/08	09/24/08	AMRT	1.500		199.67		
snj101				09/25/08	09/24/08		1.521			-199.67	
35842	CP-DISC-WFB-WF	1365		09/25/08	09/25/08	AMRT	1.000		1,026.89		
snj101				09/26/08	09/25/08		1.014			-1,026.89	
35845	CP-DISC-WFB-WF	1365		09/26/08	09/26/08	AMRT	1.500		1,319.37		
snj101				09/29/08	09/26/08		1.530			-1,319.37	
35848	CP-DISC-BANKAMERICA-BA	1365		09/29/08	09/29/08	AMRT	1.000		2,083.33		
snj101				09/30/08	09/29/08		1.014			-2,083.33	
35850	CP-DISC-BANKAMERICA-BA	1365		09/30/08	09/30/08	AMRT	.750		169.73		
snj101				10/01/08	09/30/08		.760			-169.73	
SUBTOTAL (Txn Typ) AMRT						ASSETS	2.047		439,190.25		
							2.083			-439,190.25	
35741	DREYFUS MMF-WF-1	1365	451	10/01/08	09/01/08	PURC	2.153	2,000.21	2,000.21		
uyen				09/08/08	09/01/08		2.153				-2,000.21
35806	CP-DISC-BANKAMERICA-BA	1365	40	09/03/08	09/02/08	PURC	2.020	52,069,000.00	52,066,078.35		
uyen				09/02/08	09/02/08		2.048		-2,921.65		-52,066,078.35

* ACTIVE TRANSACTIONS *

C I T Y O F S A N J O S E
T R E A S U R Y D I V I S I O N
D E T A I L T R A N S A C T I O N R E P O R T - F I X E D I N C O M E
0 9 / 0 1 / 0 8 T O 0 9 / 3 0 / 0 8
S E T T L E M E N T D A T E B A S I S
F U N D : 1 I N V E S T M E N T F U N D S

P A G E : 7
R U N : 1 0 / 1 6 / 0 8 0 9 : 2 8 : 4 3

INV #	DESCRIPTION/POOL#	BANK	BROK	MATURITY	TRADE/	TXN	COUPON	PAR VALUE	BOOK VALUE	(INTEREST)	(GAIN)/LOSS
USER	MEMO	CASH	DATE	/ENTRY	SETTLE	TYP	YIELD	ORIGINAL FACE	PREM / (DISC)	AMORT/(ACCRET)	SETTLEMENT
35807	CP-DISC-TOYOTA-TOY	1365	436	09/03/08	09/02/08	PURC	2.060	54,000,000.00	53,996,910.00		
uyen				09/02/08	09/02/08		2.089		-3,090.00		-53,996,910.00
35808	FHLB-DISC-WF	1365	451	09/03/08	09/02/08	PURC	1.950	10,000,000.00	9,999,458.33		
uyen				09/02/08	09/02/08		1.977		-541.67		-9,999,458.33
35809	CP-DISC-UBS FIN DEL-UB	1365	441	09/04/08	09/03/08	PURC	2.020	8,654,000.00	8,653,514.41		
uyen				09/03/08	09/03/08		2.048		-485.59		-8,653,514.41
35810	CP-DISC-BANKAMERICA-BA	1365	40	09/04/08	09/03/08	PURC	2.020	54,000,000.00	53,996,970.00		
uyen				09/03/08	09/03/08		2.048		-3,030.00		-53,996,970.00
35811	CP-DISC-TOYOTA-TOY	1365	436	09/04/08	09/03/08	PURC	2.020	54,000,000.00	53,996,970.00		
uyen				09/03/08	09/03/08		2.048		-3,030.00		-53,996,970.00
35812	CP-DISC-TOYOTA-TOY	1365	436	09/05/08	09/04/08	PURC	2.060	52,880,000.00	52,876,974.09		
uyen				09/04/08	09/04/08		2.089		-3,025.91		-52,876,974.09
35813	CP-DISC-BANKAMERICA-BA	1365	40	09/05/08	09/04/08	PURC	2.060	54,000,000.00	53,996,910.00		
uyen				09/04/08	09/04/08		2.089		-3,090.00		-53,996,910.00
35814	FHLB-CALL-GILFD	1365	186	03/02/10	09/04/08	PURC	3.300	10,000,000.00	10,001,833.33		
uyen				09/04/08	09/04/08		3.300		1,833.33		-10,001,833.33
35815	CP-DISC-BANKAMERICA-BA	1365	40	09/08/08	09/05/08	PURC	2.050	54,000,000.00	53,990,775.00		
uyen				09/05/08	09/05/08		2.079		-9,225.00		-53,990,775.00
35816	CP-DISC-TOYOTA-TOY	1365	436	09/08/08	09/05/08	PURC	2.040	42,131,000.00	42,123,837.73		
uyen				09/05/08	09/05/08		2.069		-7,162.27		-42,123,837.73
35817	FHLB-GILFD	1365	186	04/30/10	09/04/08	PURC	2.375	10,000,000.00	9,980,765.28		
uyen				09/05/08	09/05/08		3.009		-19,234.72		-9,980,765.28
35818	CP-DISC-TOYOTA-TOY	1365	436	09/16/08	09/08/08	PURC	2.150	54,000,000.00	53,974,200.00		
uyen				09/08/08	09/08/08		2.181		-25,800.00		-53,974,200.00
35819	CP-DISC-UBS FIN DEL -U	1365	441	09/09/08	09/08/08	PURC	2.000	5,763,000.00	5,762,679.83		
uyen				09/08/08	09/08/08		2.000		-320.17		-5,762,679.83
35820	CP-DISC-BANKAMERICA-BA	1365	40	09/09/08	09/08/08	PURC	2.040	54,000,000.00	53,996,940.00		
uyen				09/08/08	09/08/08		2.068		-3,060.00		-53,996,940.00
35821	CP-DISC-BANKAMERICA-BA	1365	40	09/10/08	09/09/08	PURC	2.000	53,559,000.00	53,556,024.50		
uyen				09/09/08	09/09/08		2.028		-2,975.50		-53,556,024.50
35822	FHLB-CALL-UBC	1365	445	06/09/10	09/09/08	PURC	3.250	10,325,000.00	10,325,000.00		
uyen				09/09/08	09/09/08		3.250				-10,325,000.00
35823	CP-DISC-BANKAMERICA-BA	1365	40	09/11/08	09/10/08	PURC	2.000	43,244,000.00	43,241,597.56		
uyen				09/10/08	09/10/08		2.028		-2,402.44		-43,241,597.56
35824	CP-DISC-UBS FIN DEL-UB	1365	441	09/12/08	09/11/08	PURC	2.000	3,800,000.00	3,799,788.89		
uyen				09/11/08	09/11/08		2.028		-211.11		-3,799,788.89
35825	CP-DISC-WFB-WF	1365	451	09/12/08	09/11/08	PURC	2.000	54,000,000.00	53,997,000.00		
uyen				09/11/08	09/11/08		2.028		-3,000.00		-53,997,000.00
35826	FHLB-DISC-WF	1365	451	09/15/08	09/12/08	PURC	2.060	50,000,000.00	49,991,416.67		
uyen				09/12/08	09/12/08		2.089		-8,583.33		-49,991,416.67
35827	FHLB-DISC-WF	1365	451	09/15/08	09/12/08	PURC	2.060	16,673,000.00	16,670,137.80		
uyen				09/12/08	09/12/08		2.089		-2,862.20		-16,670,137.80
35828	FHLB-DISC-WF	1365	451	09/16/08	09/15/08	PURC	2.000	66,370,000.00	66,366,312.78		
uyen				09/15/08	09/15/08		2.033		-3,687.22		-66,366,312.78

* ACTIVE TRANSACTIONS *

C I T Y O F S A N J O S E
T R E A S U R Y D I V I S I O N
D E T A I L T R A N S A C T I O N R E P O R T - F I X E D I N C O M E
0 9 / 0 1 / 0 8 T O 0 9 / 3 0 / 0 8
S E T T L E M E N T D A T E B A S I S
F U N D : 1 I N V E S T M E N T F U N D S

P A G E : 8
R U N : 1 0 / 1 6 / 0 8 0 9 : 2 8 : 4 3

INV #	DESCRIPTION/POOL#	BANK	BROK	MATURITY	TRADE/	TXN	COUPON	PAR VALUE	BOOK VALUE	(INTEREST)	(GAIN)/LOSS
USER	MEMO	CASH	DATE	/ENTRY	SETTLE	TYP	YIELD	ORIGINAL FACE	PREM / (DISC)	AMORT/(ACCRET)	SETTLEMENT
35829	FHLB-DISC- WF	1365	451	09/17/08	09/16/08	PURC	1.900	11,316,000.00	11,315,402.77		
uyen				09/16/08	09/16/08		1.926		-597.23		-11,315,402.77
35830	CP-DISC-BANKAMERICA-BA	1365	40	09/23/08	09/16/08	PURC	3.000	7,065,000.00	7,060,878.75		
uyen				09/16/08	09/16/08		3.043		-4,121.25		-7,060,878.75
35831	CP-DISC-TOYOTA-TOY	1365	436	10/02/08	09/16/08	PURC	2.220	54,000,000.00	53,946,720.00		
uyen				09/16/08	09/16/08		2.253		-53,280.00		-53,946,720.00
35832	CP-DISC-GE CAPITAL COR	1365	187	09/17/08	09/16/08	PURC	2.000	54,000,000.00	53,997,000.00		
uyen				09/16/08	09/16/08		2.028		-3,000.00		-53,997,000.00
35833	FFCB-CALL-UBS	1365	441	09/19/11	09/19/08	PURC	3.690	13,925,000.00	13,925,000.00		
uyen				09/17/08	09/19/08		3.690				-13,925,000.00
35834	CP-DISC-GE CAPITAL COR	1365	187	09/18/08	09/17/08	PURC	2.000	50,000,000.00	49,997,222.22		
uyen				09/17/08	09/17/08		2.028		-2,777.78		-49,997,222.22
35835	CP-DISC-WFB-WF	1365	451	09/18/08	09/17/08	PURC	1.750	17,039,000.00	17,038,171.72		
uyen				09/17/08	09/17/08		1.774		-828.28		-17,038,171.72
35836	CP-DISC- WFB-WF	1365	451	09/19/08	09/18/08	PURC	2.000	50,000,000.00	49,997,222.22		
uyen				09/18/08	09/18/08		2.028		-2,777.78		-49,997,222.22
35837	CP-DISC-GE CAPITAL COR	1365	187	09/19/08	09/18/08	PURC	2.000	17,307,000.00	17,306,038.50		
uyen				09/18/08	09/18/08		2.028		-961.50		-17,306,038.50
35838	FHLB-DISC-WF	1365	451	09/22/08	09/19/08	PURC	1.700	52,053,000.00	52,045,625.83		
uyen				09/19/08	09/19/08		1.724		-7,374.17		-52,045,625.83
35839	CP-DISC-WFB-WF	1365	451	09/23/08	09/22/08	PURC	2.000	50,578,000.00	50,575,190.11		
uyen				09/22/08	09/22/08		2.028		-2,809.89		-50,575,190.11
35840	CP-DISC-BANKAMERICA-BA	1365	40	09/24/08	09/23/08	PURC	1.880	50,000,000.00	49,997,388.89		
uyen				09/23/08	09/23/08		1.906		-2,611.11		-49,997,388.89
35841	CP-DISC-GE CAPITAL COR	1365	187	09/24/08	09/23/08	PURC	1.500	4,792,000.00	4,791,800.33		
uyen				09/23/08	09/23/08		1.521		-199.67		-4,791,800.33
35842	CP-DISC-WFB-WF	1365	451	09/25/08	09/24/08	PURC	1.000	36,968,000.00	36,966,973.11		
uyen				09/24/08	09/24/08		1.014		-1,026.89		-36,966,973.11
35843	FFCB-CALL-UBS	1365	441	09/24/10	09/24/08	PURC	3.500	12,000,000.00	12,000,000.00		
uyen				09/24/08	09/24/08		3.500				-12,000,000.00
35844	FFCB-CALL-UBC	1365	445	09/29/11	09/29/08	PURC	3.750	10,000,000.00	9,947,500.00		
uyen				09/25/08	09/29/08		3.937		-52,500.00		-9,947,500.00
35845	CP-DISC-WFB-WF	1365	451	09/26/08	09/25/08	PURC	1.500	31,665,000.00	31,663,680.63		
uyen				09/25/08	09/25/08		1.530		-1,319.37		-31,663,680.63
35846	CP-DISC-WFB-WF	1365	451	10/09/08	09/25/08	PURC	3.400	10,000,000.00	9,986,777.78		
uyen				09/25/08	09/25/08		3.452		-13,222.22		-9,986,777.78
35847	CP-DISC-WFB-WF	1365	451	10/10/08	09/26/08	PURC	3.400	10,834,000.00	10,819,675.04		
uyen				09/26/08	09/26/08		3.452		-14,324.96		-10,819,675.04
35848	CP-DISC-BANKAMERICA-BA	1365	40	09/29/08	09/26/08	PURC	1.000	25,000,000.00	24,997,916.67		
uyen				09/26/08	09/26/08		1.014		-2,083.33		-24,997,916.67
35850	CP-DISC-BANKAMERICA-BA	1365	40	09/30/08	09/29/08	PURC	.750	8,147,000.00	8,146,830.27		
uyen				09/29/08	09/29/08		.760		-169.73		-8,146,830.27
35851	CP-DISC-BANKAMERICA-BA	1365	40	10/01/08	09/30/08	PURC	.500	28,414,000.00	28,413,605.36		
uyen				09/30/08	09/30/08		.500		-394.64		-28,413,605.36

C I T Y O F S A N J O S E
 T R E A S U R Y D I V I S I O N
 * ACTIVE TRANSACTIONS *
 DETAIL TRANSACTION REPORT - FIXED INCOME
 09/01/08 TO 09/30/08
 SETTLEMENT DATE BASIS
 FUND: 1 INVESTMENT FUNDS

INV #	DESCRIPTION/POOL#	BANK	BROK	MATURITY	TRADE/	TXN	COUPON	PAR VALUE	BOOK VALUE	(INTEREST)	(GAIN)/LOSS
USER	MEMO	CASH	DATE	/ENTRY	SETTLE	TYP	YIELD	ORIGINAL FACE	PREM / (DISC)	AMORT/(ACCRET)	SETTLEMENT

SUBTOTAL (Txn Typ) PURC					ASSETS		2.005	1472573000.21	1472300714.96		
							2.037		-272,285.25		-1472300714.96

SUBTOTAL (Fund) 1 INVESTMENT FUNDS					ASSETS			-28,495,715.47	-28,316,310.47	-4,758,664.47	-12,500.00
									-259,785.25	-439,190.25	33,526,665.19

C I T Y O F S A N J O S E
T R E A S U R Y D I V I S I O N
DETAIL TRANSACTION REPORT - FIXED INCOME
09/01/08 TO 09/30/08
FUND: 1 GRAND TOTALS
ASSETS

PAGE: 10

RUN: 10/16/08 09:28:43

* ACTIVE TRANSACTIONS *

TYPE/ TXN#	PAR WEIGHTED YIELD	PAR VALUE	ORIGINAL FACE VALUE	BOOK VALUE	PREMIUM/ (DISCOUNT)	AMORTIZATION/ (ACCRETION)	(INTEREST)	(GAIN)/ LOSS	SETTLEMENT
PURC (46)	2.037	1472573000.21		1472300714.96	-272,285.25				-1472300714.96
INTR (22)	4.008						-3,601,914.47		
MAT (49)	2.083	-1491068715.68		-1491068715.68			-1,156,750.00		1492225465.68
AMRT (3)	4.969			-36,050.00		36,050.00			
ACR (45)	2.034			475,240.25		-475,240.25			
CALL (2)	5.453	-10,000,000.00		-9,987,500.00	12,500.00			-12,500.00	10,000,000.00

* ACTIVE TRANSACTIONS *

C I T Y O F S A N J O S E
T R E A S U R Y D I V I S I O N
DETAIL TRANSACTION REPORT - FIXED INCOME
09/01/08 TO 09/30/08
SETTLEMENT DATE BASIS
FUND: 54 RDA SERIES 2007

PAGE: 11

RUN: 10/16/08 09:28:43

INV #	DESCRIPTION/POOL#	BANK BROK	MATURITY	TRADE/	TXN COUPON	PAR VALUE	BOOK VALUE	(INTEREST)	(GAIN)/LOSS
USER	MEMO	CASH DATE	/ENTRY	SETTLE	TYP YIELD	ORIGINAL FACE	PREM / (DISC)	AMORT/(ACCRET)	SETTLEMENT
35386	SERIES 2007-RDA	130	10/01/08	09/30/08	INTR 2.772			-892,042.08	
uyen		09/30/08	10/15/08	09/30/08	2.772				892,042.08
SUBTOTAL (Txn Typ) INTR					ASSETS	2.772		-892,042.08	
						2.772			892,042.08
35386	SERIES 2007-RDA	130 415	10/01/08	09/08/08	PSAL 2.772	-10,000,000.00	-10,000,000.00		
uyen		09/08/08	09/08/08	09/08/08	2.772				10,000,000.00
SUBTOTAL (Txn Typ) PSAL					ASSETS	2.772	-10,000,000.00	-10,000,000.00	
						2.772			10,000,000.00
SUBTOTAL (Fund) 54 RDA SERIES 2007					ASSETS		-10,000,000.00	-10,000,000.00	-892,042.08
									10,892,042.08

* ACTIVE TRANSACTIONS *

C I T Y O F S A N J O S E
T R E A S U R Y D I V I S I O N
DETAIL TRANSACTION REPORT - FIXED INCOME
09/01/08 TO 09/30/08
FUND: 54 GRAND TOTALS
ASSETS

PAGE: 12

RUN: 10/16/08 09:28:43

TYPE/ TXN#	PAR WEIGHTED YIELD	PAR VALUE	ORIGINAL FACE VALUE	BOOK VALUE	PREMIUM/ (DISCOUNT)	AMORTIZATION/ (ACCRETION)	(INTEREST)	(GAIN)/ LOSS	SETTLEMENT
PSAL (1)	2.772	-10,000,000.00		-10,000,000.00					10,000,000.00
INTR (1)	2.772						-892,042.08		

* ACTIVE TRANSACTIONS *

C I T Y O F S A N J O S E
T R E A S U R Y D I V I S I O N
DETAIL TRANSACTION REPORT - FIXED INCOME
09/01/08 TO 09/30/08
REPORT GRAND TOTALS
ASSETS

PAGE: 13

RUN: 10/16/08 09:28:43

TYPE/ TXN#	PAR WEIGHTED YIELD	PAR VALUE	ORIGINAL FACE VALUE	BOOK VALUE	PREMIUM/ (DISCOUNT)	AMORTIZATION/ (ACCRETION)	(INTEREST)	(GAIN)/ LOSS	SETTLEMENT
PURC (46)	2.037	1472573000.21		1472300714.96	-272,285.25				-1472300714.96
CALL (2)	5.453	-10,000,000.00		-9,987,500.00	12,500.00			-12,500.00	10,000,000.00
PSAL (1)	2.772	-10,000,000.00		-10,000,000.00					10,000,000.00
INTR (23)	3.569						-4,493,956.55		
MAT (49)	2.083	-1491068715.68		-1491068715.68			-1,156,750.00		1492225465.68
AMRT (3)	4.969			-36,050.00		36,050.00			
ACR (45)	2.034			475,240.25		-475,240.25			

C I T Y O F S A N J O S E
T R E A S U R Y D I V I S I O N

BROKER PURCHASE DISTRIBUTION
07/01/08 THROUGH 09/30/08

PAGE: 1
RUN: 10/17/08 12:26:56

ALL FUNDS					(ABSOLUTE)
CODE	BROKER NAME	TRANSACTIONS	ASSETS	LIABILITIES	TOTAL
-----		-----	-----	-----	-----
40	BANK OF AMERICA SECURITIES LLC	25	928,166,793.60		928,166,793.60
179	CREDIT SUISSE	2	29,152,645.72		29,152,645.72
186	GILFORD SECURITIES INC.	2	19,982,598.61		19,982,598.61
187	GENERAL ELECTRIC CAPITAL CORP	13	363,903,792.01		363,903,792.01
260	LEHMAN BROS	1	9,999,422.22		9,999,422.22
415	STATE INVESTMENT POOL	3	1,739,918.86		1,739,918.86
436	TOYOTA FINANCIAL SERVICES	20	807,135,505.57		807,135,505.57
441	UBS FINANCIAL SERVICES INC.	44	751,621,700.57		751,621,700.57
445	UNION BANK OF CALIFORNIA	2	20,272,500.00		20,272,500.00
451	WELLS FARGO BANK - INVESTMENTS	54	1,521,113,523.86		1,521,113,523.86
		-----	-----	-----	-----
	GRAND TOTALS	166	4,453,088,401.02		4,453,088,401.02
		=====	=====	=====	=====