



# Memorandum

**TO:** HONORABLE MAYOR AND  
CITY COUNCIL

**FROM:** Julia H. Cooper

**SUBJECT: INVESTMENT REPORT FOR  
THE QUARTER ENDED  
DECEMBER 31, 2011**

**DATE:** January 31, 2012

Approved

Date

2-6-12

Transmitted herewith is the City's investment report for the quarter ended December 31, 2011. To meet the reporting requirements set forth in the City of San Jose Investment Policy, an electronic version of this report will be posted on the City's website at [www.csjfinance.org](http://www.csjfinance.org) and a hard copy will be on file at the City Clerk's Office located at 200 East Santa Clara Street.

This report will be distributed to the Public Safety, Finance and Strategic Support Committee (PSFSS) for discussion during its meeting on February 16, 2012 and will be agendized through the PSFSS Committee to a subsequent City Council meeting.

Summary of portfolio performance and compliance for quarter ended December 31, 2011:

- Size of total portfolio – \$926,961,888
- Earned interest yield – 0.750%
- Weighted average days to maturity – 524 days
- Fiscal Year-to-Date net interest earnings – \$3,252,590
- No sale of securities prior to maturity dates, therefore no realized gains/losses from sales
- No exceptions to the City's Investment Policy during this quarter

If you have any questions on this investment report, please do not hesitate to call me at 535-7000.

JULIA H. COOPER  
Acting Director of Finance

cc: Debra Figone, City Manager  
Sharon Erickson, City Auditor  
Richard Doyle, City Attorney

**INVESTMENT REPORT FOR  
THE QUARTER ENDED  
DECEMBER 31, 2011**



Prepared by  
Finance Department  
Treasury Division

Julia H. Cooper  
Acting Director of Finance

**Investment Report for  
The Quarter Ended  
December 31, 2011  
City of San Jose  
Department of Finance  
Treasury Division**

JULIA H. COOPER  
Acting Director of Finance

ARN C. ANDREWS  
Acting Assistant Director of Finance

MARIA ÖBERG  
Acting Division Manager/Treasury

**Investment Staff**

Udaya Rajbhandari, Financial Analyst  
Uyen Le, Senior Account Clerk

**Special Assistance by**

Suzanne Adaysh, Accountant  
Tim Roberts, Account Clerk II

**CITY OF SAN JOSE  
INVESTMENT REPORT FOR  
THE QUARTER ENDED DECEMBER 31, 2011  
TABLE OF CONTENTS**

INVESTMENT REPORT	1
A. PORTFOLIO STATISTICS	A-1
B. EARNED INTEREST SUMMARY	B-1
Quarterly Portfolio Statistics	
Quarterly Portfolio Interest Earnings	
Year-to-Date Portfolio Statistics	
Year-to-Date Portfolio Earned Income	
C. TIME DEPOSIT BANK DISTRIBUTION REPORT	C-1
D. MARKET VALUE OF PORTFOLIO	D-1
E. DETAIL OF INVESTMENT ACTIVITY	E-1
Amortization, Maturities, Sales, Purchases, Interest per Investment Type	
Portfolio Activity Summary	
Broker Purchase Distribution	

January 31, 2012

HONORABLE MAYOR and CITY COUNCIL

**INVESTMENT REPORT FOR THE QUARTER ENDED DECEMBER 31, 2011**

I am pleased to present this report of investment activity for the quarter ended December 31, 2011 in compliance with the reporting requirements as set forth in the City of San José Investment Policy. The information presented in the table below highlights the investment activity for the quarter ended December 31, 2011 as well as provides a comparison to the quarters ended September 30, 2011 and December 31, 2010.

The report presents information in the following major categories: Portfolio Statistics, Portfolio Performance, Compliance Reporting Requirements, Investment Trading Activity, and Investment Strategy pursuant to the Investment Policy.

<b>INVESTMENT SUMMARY</b>			
<b>For the Quarter Ended</b>	<b>December 31, 2011</b>	<b>September 30, 2011</b>	<b>December 31, 2010</b>
<b><u>Total Portfolio</u></b>			
Portfolio Value <sup>(1) (2) (3)</sup>	\$926,961,888	\$833,367,163	\$1,040,228,986
Earned Interest Yield	0.750%	0.738%	0.737%
Dollar-weighted average yield			
Purchases	.426%	.380%	.228%
Maturities	.873%	.236%	.491%
Called Securities	1.25%	1.38%	3.976%
Weighted avg. yield at end of period	.634%	.789%	.497%
Weighted avg. days to maturity	524	513	161
<b><u>Portfolio Fund 1</u></b>			
Portfolio Value <sup>(1) (2)</sup>	\$913,433,452	\$819,850,869	\$1,004,838,183
Earned Interest Yield	0.756%	0.744%	0.758%
Dollar-weighted average yield			
Purchases	.426%	.380%	.234%
Maturities	.873%	.236%	.511%
Called Securities	1.25%	1.38%	3.976%
Weighted avg. yield at end of period	0.638%	0.796%	0.507%
Weighted avg. days to maturity	529	517	167

<sup>1</sup> Reflects book value (principal plus any purchased interest costs) of investments.

<sup>2</sup> Total excludes bond proceeds held by trustees for the City of San José (\$532,852,206.63).

<sup>3</sup> Total includes \$12,677,034 bond proceeds held at Local Agency Investment Fund for RDA Series 2008B.

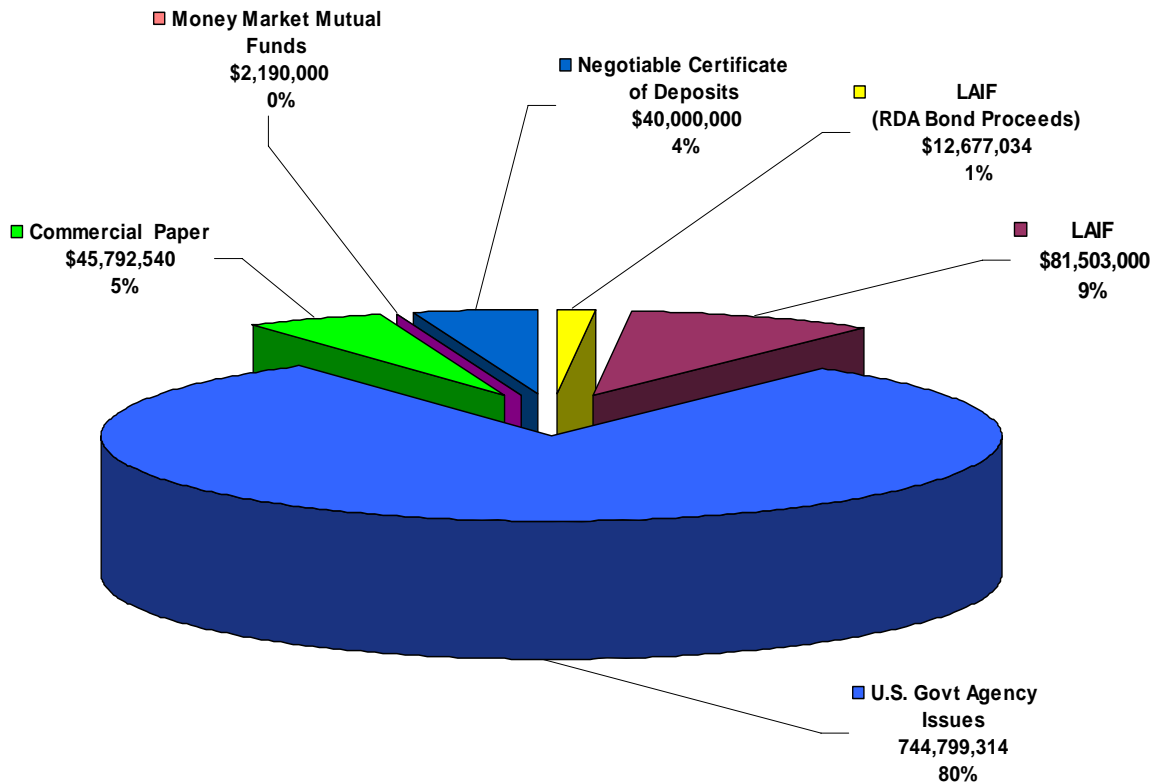
**PORTFOLIO STATISTICS**

Detailed information can be found in the attachments while summaries in graphic form are provided below.

**Portfolio Composition**

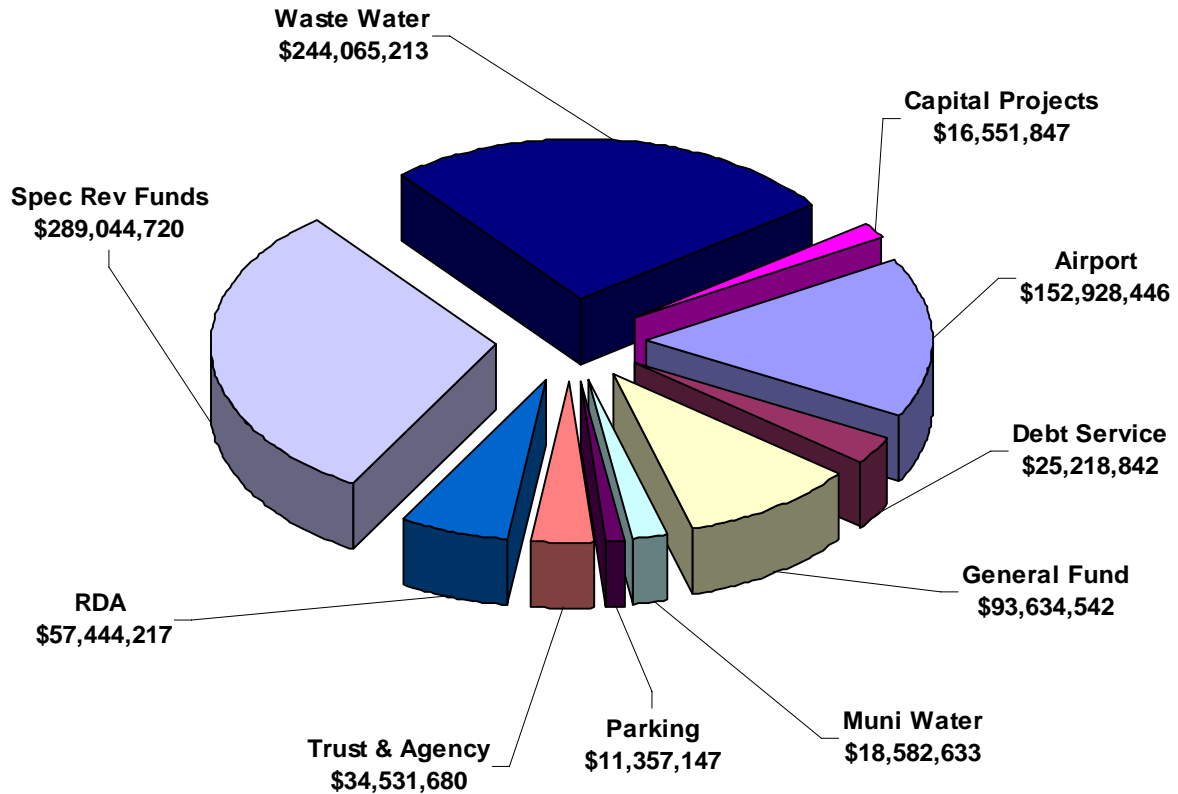
The graphs below provide snapshots of the City’s total investment portfolio as of December 31, 2011. The first graph shows the portfolio composition by investment type and the following two graphs show the portfolio’s cash balances by fund type.

**Portfolio Composition**  
As of December 31, 2011  
\$926,961,888



The graph below reflects the reconciliation of total balances reported by the investment program’s record-keeping system to the City’s Financial Management System (FMS).

**Cash Balances by Fund Type**  
 As of December 31, 2011  
**\$943,359,288**

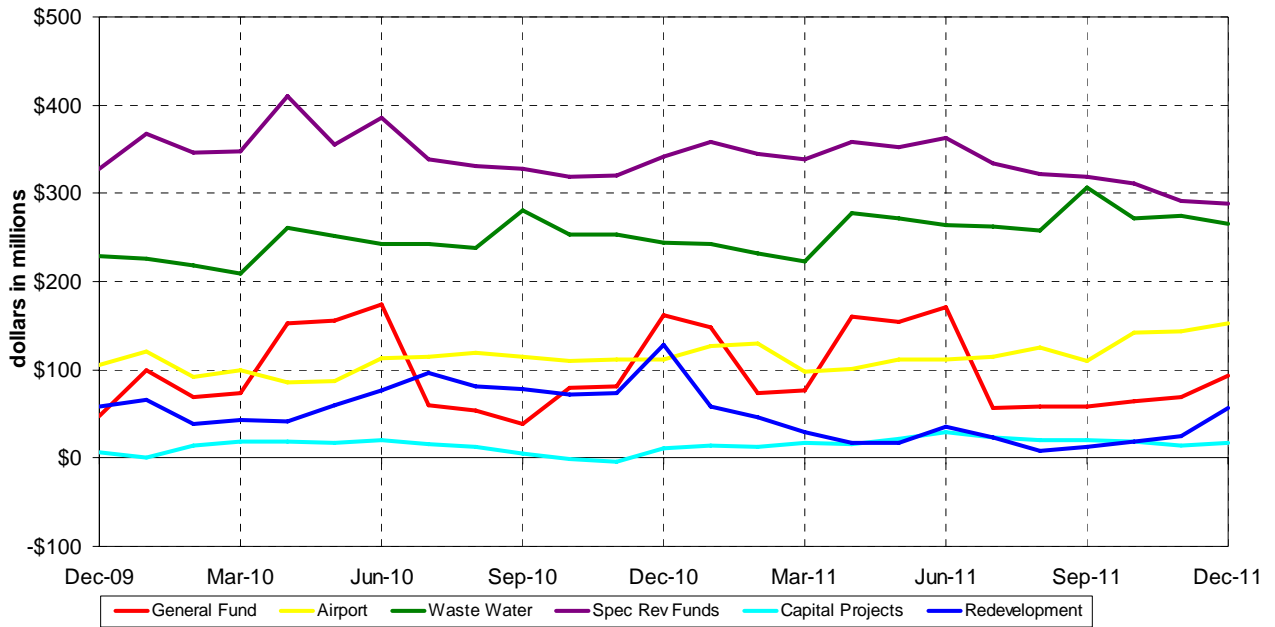


Total Cash Balances per FMS	\$943,359,288
Deposit-in-Transit, Outstanding Checks <sup>1</sup>	<u>(\$16,397,400)</u>
Portfolio Balance Total	\$926,961,888

The following graph compares the monthly total balances of selected City funds as reported by the City's Financial Management System (FMS).

<sup>1</sup> Reflects timing differences between when deposits are made and accounted for in FMS, or when checks are written and not yet cashed by the receiving party.

**Monthly Comparison of Balances by Fund Type  
As of December 31, 2011**



**General Fund Balances**

Cash balances in the General Fund increased approximately \$35 million from the September 30, 2011 balance of \$58 million to the December 31, 2011 ending balance of \$93 million. As depicted above, cash balances usually peak during the months of January and June when the bulk of property taxes are received. Traditionally, the summer months experience a decline in the portfolio and the General Fund balances due to the retirement prefunding, debt service payments and operational expenditures during months when no property tax revenue is received.

**Prefunding of Annual Retirement Contributions and Issuance of Short-term Notes**

On July 1, 2011, the City issued a short-term note, the 2011 Tax & Revenue Anticipation Note (TRAN), for cash flow borrowing purposes, primarily to facilitate the prefunding of employer retirement contributions. Of the total \$125 million TRAN capacity, \$100 million was issued on July 1, 2011. No further draws were needed and the City will repay the TRAN in full (issued amount plus interest) on February 1, 2012.

**Negative Cash Balances**

Cash balances in the Capital Projects funds remained above zero this month. Negative balances are caused by a time lag between when payments are made through the investment pool and when funds are received from trustees for the related reimbursement for these capital costs. Finance staff has been working with departments to shorten this time lag.



**Redevelopment Agency Portion of Portfolio**

Historically, the Redevelopment Agency’s participation in the City’s investment pool has consisted of restricted bond proceeds and operating cash balances. As of December 31, 2011, the Agency’s holdings had increased by \$44 million from the \$12 million reported as of September 30, 2011. The increase was mainly due to the receipt of property tax revenues in December, 80% of which were sent to the fiscal agent in January 2012. The pool holdings include \$12.7 million of Redevelopment Agency 2008B bond proceeds, which are for restricted use and which are currently invested in a segregated LAIF account.

Total interest earnings from Agency funds invested with the City pool during the quarter ended December 31, 2011 were \$21,998, inclusive of earnings on the LAIF account established for the 2008B bond proceeds.

**PORTFOLIO PERFORMANCE**

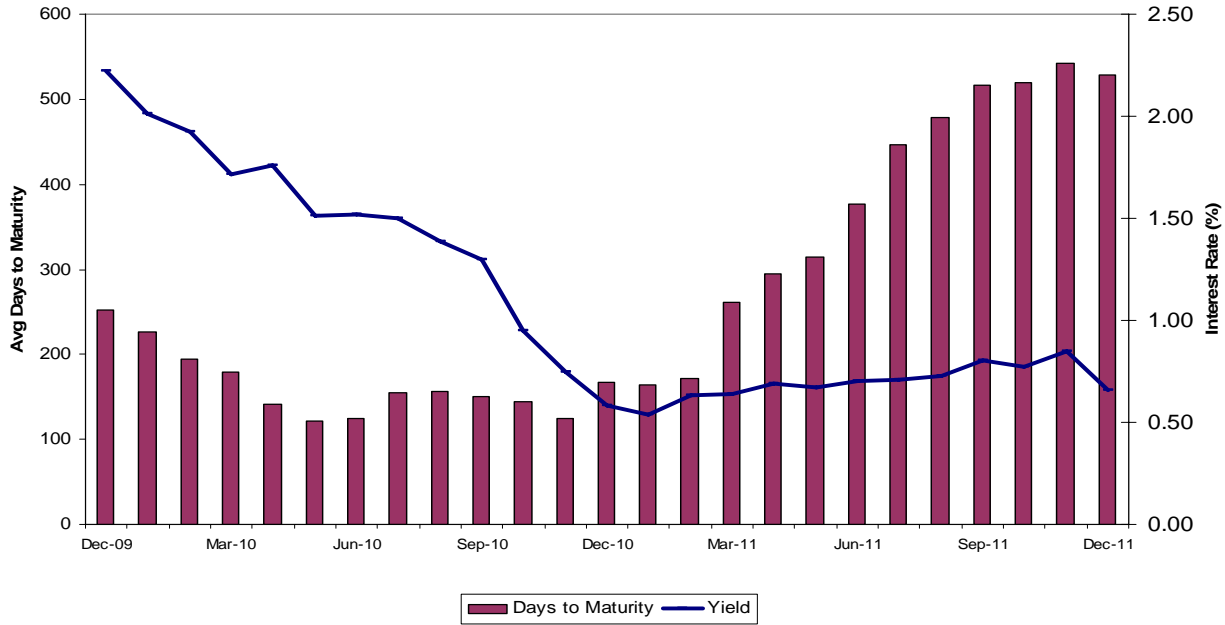
The table below illustrates the total portfolio income recognized for the last quarter as compared to the prior quarter and the same quarter one year ago. Other graphs in this section include yield and maturity trends over the last two years.

<b><u>TOTAL PORTFOLIO INCOME RECOGNIZED</u></b>			
<b><u>Accrual Basis</u></b>			
<b><u>Total Portfolio</u></b>	<b><u>December 30, 2011</u></b>	<b><u>September 30, 2011</u></b>	<b><u>December 31, 2010</u></b>
<b><u>Quarter-End</u></b>			
Total interest earnings	\$1,619,728	\$1,632,862	\$1,674,386
Realized gains (losses) from sales	<u>0</u>	<u>0</u>	<u>0</u>
Total income recognized	\$1,632,862	\$1,632,862	\$1,674,386
<b><u>Fiscal Year-to-Date</u></b>			
Total interest earnings	\$3,252,590	\$1,632,862	\$4,967,672
Realized gains (losses) from sales	<u>0</u>	<u>0</u>	<u>0</u>
Total income recognized	\$3,252,590	\$1,632,862	\$4,967,672

**Yield and Maturity Trend**

The following graph illustrates the dollar-weighted average days to maturity (“ADM”) of Portfolio Fund 1 (bar graph) along with the yield trend (line graph) for each month for the past two years. The ADM increased from 517 days on September 30, 2011 to 529 days on December 31, 2011. While the table on page 1 summarizes portfolio data on a quarter-to-quarter basis, the following tables summarize the data on a month-to-month basis. While on a quarter-to-quarter basis the yield on Portfolio Fund 1 increased as of December 31, 2011, on a month-to-month basis the yield actually decreased, which is a reflection of high-yielding securities maturing or call options being exercised during the month.

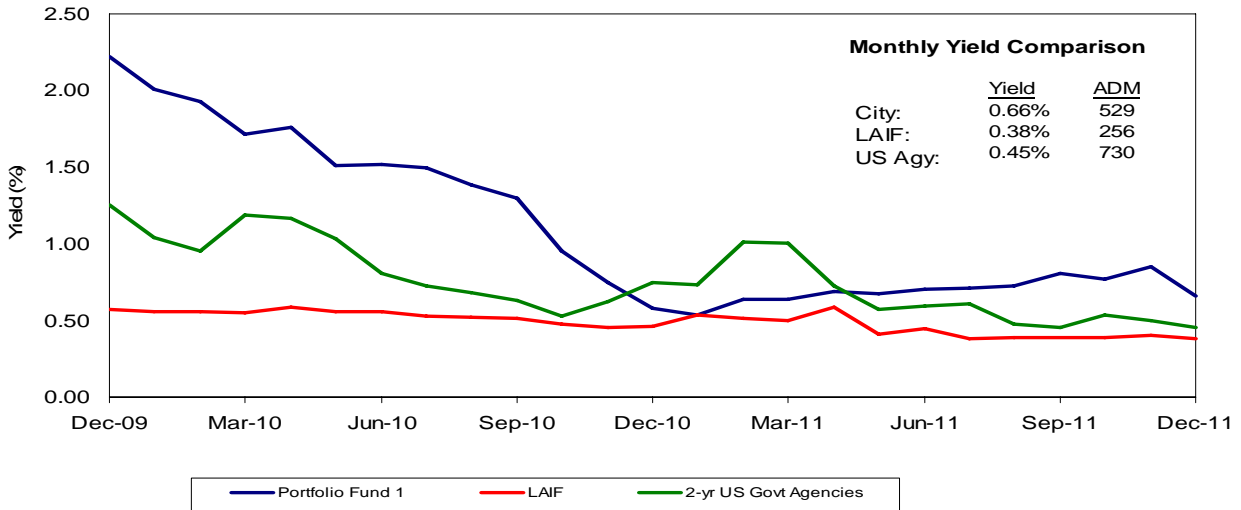
**Yield and Maturity Trends Portfolio Fund 1**  
 As of December 31, 2011



**Benchmark Comparison**

The following graph compares the monthly earned interest yield of the City’s Portfolio Fund 1 with the monthly average yields of the State of California Local Agency Investment Fund (LAIF) and of the two-year U.S. government agency securities from December 2009 through December 2011. The City’s Total Portfolio is not used for benchmarking comparisons since it includes various funds which are required to be invested apart from the pool and have their own separate cash flow needs.

**Monthly Benchmark Comparisons**  
 As of December 31, 2011



The closest suitable benchmarks for the City’s Portfolio Fund 1 are the two-year US government agency securities and the Local Agency Investment Fund (LAIF). Despite yields in the market remaining at historically low levels, during the past three quarters, the City’s yield has increased over the two-year government agency benchmark. This increase is the result of staff purchasing longer-dated maturities (out to three years) as well as callable securities that provide a yield advantage.

The two-year agency benchmark has historically been a suitable benchmark for the City’s portfolio as it closely mimics the City’s desired duration. The two-year government agency benchmark maintains a constant average-days-to-maturity (“ADM”) of 730 days while the City’s ADM will vary depending on cash flow needs. Liquidity restraints, reduced fund balances, as well as the structural change in the City’s portfolio associated with the retirement prefunding, have resulted in the City’s ADM being lower than the two-year agency benchmark. During the past three quarters, however, staff has been extending investment maturities, increasing both the portfolio duration and yield.

During the month of December 2011, LAIF’s ADM was 256 days compared to the 529 days of the City’s Portfolio Fund 1. Although the City’s ADM increased this quarter to 529 days from 517 days in the last quarter, the City’s relatively short average life will continue to result in the portfolio’s yields remaining near historic lows. However, the short average life will, as cash flows permit, allow the City’s portfolio to react relatively quickly once interest rates increase, resulting in more favorable yield performance.

**Unrealized Losses and Gains**

As shown in the Investment Summary Table on page 1 of this report, the total portfolio size as of December 31, 2011 was \$926,961,888. The following table illustrates the net unrealized gains or losses on the portfolio when comparing the portfolio’s market value to both its original cost and amortized cost.

<b><u>UNREALIZED GAINS &amp; LOSSES</u></b>			
<b><u>Cash Basis</u></b>			
<b>Market Value</b>	\$930,678,676	<b>Market Value</b>	\$930,678,676
<b>Original Cost</b>	<u>(926,961,888)</u>	<b>Amortized Cost</b>	<u>(927,338,020)</u>
<b>Net Unrealized Gain (Loss)</b>	\$3,716,788	<b>Net Unrealized Gain (Loss)</b>	\$ 3,340,656

The City’s investment practice, per the Investment Policy, is generally to hold securities to the maturity dates, with exceptions as noted in the Policy. The net unrealized gains noted above are “paper gains” where there is an inverse relationship between the general changes in market interest rates to the value of investment securities. As general market interest rates decrease, the value of the City’s investments increase as a result of the higher interest yields that these investments hold compared to market interest rates. Conversely, as market interest rates increase, the value of the

City's investments decline as a result of the lower interest yields that these investments hold compared to market interest rates.

**Earned Interest Yield** – The total investment portfolio earned interest yield for the quarter ended December 31, 2011 was 0.750%. The yield on the portfolio increased from the quarter ended September 30, 2011, resulting in increased interest income for the portfolio. This positive change is the result of change in the investment strategy from one of staying invested primarily in cash and money-market instruments into one with more structured and ladder investments.

The Federal Funds target range remained unchanged between 0.00% (zero percent) and 0.25%. The Federal Open Market Committee ("FOMC") statement released on January 25, 2012, reiterated that economic conditions are likely to warrant exceptionally low levels for the federal funds rate at least through late 2014.

## **COMPLIANCE REPORTING REQUIREMENTS**

As part of the reporting process as outlined in the Investment Policy, several compliance requirements are to be included in the quarterly report. These requirements include a statement of the cash management projection, statement of compliance with the policy, and comparisons of budget investment earnings to actual investment earnings.

### **Cash Management Projection**

Based on the Finance Department's cash flow projection as of December 31, 2011, total revenues and investment maturities for the next six months are anticipated to be \$936 million. This is sufficient to cover the projected City expenditures for the same period of approximately \$802 million.

### **Statement of Compliance with the Policy**

There were no exceptions or violations outstanding for the quarter ended December 31, 2011. The investment portfolio during the quarter ended December 31, 2011 meets the requirements of the City's Investment Policy and the California Government Code section 53601.

### **Comparison of Portfolio Investment Earnings to FY 2011-12 Budget**

The following is a comparison of actual investment earnings on an accrual basis to the fiscal year 2011-12 budget. Monthly budgeted earnings apportionments for the City funds are based upon historical cash balance averages and an assumed average interest yield for the fiscal year. The 2011-12 budgeted interest earnings for the General Fund were \$110,000 based on a projected net interest yield of 0.22%. The schedule below compares the unaudited actual net investment earnings for the General Fund for the quarter ended December 31, 2011 to the budgeted amounts.

---



---

**BUDGET COMPARISON**

---

<u>Net Investment Earnings</u>	<u>Yield</u>	<u>General Fund</u>
<i>Quarter Ended December 2011</i>		
Budget <sup>(a)</sup>	0.22%	\$ 27,500
Actual <sup>(b)</sup>	<u>0.46%</u>	<u>33,537</u>
Variance <sup>(c)</sup>	0.24%	\$ 6,037
<i>Fiscal Year to Date</i>		
Budget <sup>(a)</sup>	0.22%	\$ 55,000
Actual <sup>(b)</sup>	<u>0.45%</u>	<u>68,034</u>
Variance <sup>(c)</sup>	0.23%	\$ 13,034

---

(a) Reflects the FY 11/12 Adopted Budget as approved by the Council on June 21, 2011.

(b) Reflects net investment yield which is the earned interest yield less costs to administer the investment program, adjusted for funds with negative cash balances at month-end.

---



---

**INVESTMENT TRADING ACTIVITY**

Attachment E provides a detailed summary of the Investment Activities during the quarter including any realized gains or losses from interest received on trading activity. Since the City is currently not involved in active trading, this reporting only occurs when a security must be sold prior to maturity as defined in Section 4.0(B) of the Investment Policy.

**INVESTMENT STRATEGY**

The investment program continues to focus on its core mandate of safety, liquidity and yield. For the past few years, the City's investment strategy has been to invest short-term (18 months or less) in order to cover liquidity needs. In early 2011, staff began to extend maturities in order to provide income and structure to the portfolio. Investments were matched to known cash flow outlays in the 18-36 month horizon. Unless market conditions change dramatically, this strategy is expected to continue throughout FY 2011-12 given a forecast of continued slow economic growth. Given budget constraints and the continued low market interest yields, staff will not actively seek to extend maturities beyond 36 months.

The Staff initiated moratorium that was placed last quarter on purchases of Bank of America-issued commercial paper, bankers acceptances and corporate medium-term notes due to the credit downgrade of Bank of America remained in place this quarter. Staff continues to monitor credit reports on Bank of America and will lift the moratorium when conditions have improved and the credit rating has been upgraded to at least the minimum levels as specified in the City's Investment Policy.

**Future Commitments** -- As of quarter-end December 31, 2011, the City had no obligations to buy or sell securities, and no commitments to participate in securities trading.

**Executed Reverse Repurchase Agreements** -- No reverse repurchase agreements were executed this quarter.

**Restructuring**-- No restructuring transactions were executed during the quarter ended December 31, 2011.

**Municipal Bonds** -- No municipal bonds were purchased during the quarter ended December 31, 2011.

### **CONCLUSION**

The total investment portfolio as of December 31, 2011 was \$926,961,888. This is an increase of approximately \$93 million from September 30, 2011. For the quarter ended December 31, 2011, the total portfolio earned interest yield was 0.750%, a slight increase from 0.738% reported for the quarter ended September 30, 2011, reflecting the higher yields earned on longer-dated investments as a result of the rebalancing of the portfolio from a cash portfolio to a more structured and laddered portfolio. The weighted average days to maturity increased during the quarter ended December 31, 2011 to 524 days, also as a result of staff extending maturities to provide structure and income for the portfolio. As of December 31, 2011, approximately 80% of the total portfolio consisted of U.S. government agency securities.

Respectfully submitted,

  
JULIA H. COOPER  
Acting Director of Finance

## SECTION A

### PORTFOLIO STATISTICS

#### Section 1: All Funds Summary

Summarizes daily average investment balances for each portion of the portfolio, the daily uninvested average in the general account, and the average total holdings per day.

#### Section 2: Statistics

**TOTAL INTEREST RECEIVED IN THIS PERIOD:** Represents the cash basis receipts for the report period. Includes the total actual interest receipts less accrued interest purchased (if not offset by prior coupon payment) and further modified by the gain or loss amounts incurred through sales during the period.

**TOTAL NET EARNINGS THIS PERIOD:** Represents the accrued net earnings for the period. Encompasses the net of interest accrual, premium amortization, discount accretion, and gains/losses from sales.

**AVERAGE DAILY PORTFOLIO BALANCE:** The sum of daily investment balances (cost-adjusted by amortization/accretion postings) during the actual period, including weekends and holidays, divided by the number of days in the reporting period.

**EARNED INTEREST YIELD THIS PERIOD:** The total net accrued earnings this period, divided by the number of days within the report period, then multiplied by 365 days, and divided by the average daily investment balance.

**END OF PERIOD PORTFOLIO BALANCE:** The sum of all investment balances (adjusted cost basis) which are active at the end of the report.

**WEIGHTED AVERAGE YIELD AT END OF PERIOD:** The sum of all end of period investment balances, each multiplied by its ending sub-period yield, then divided by the sum of the end of period investment balances (current book value or adjusted costs basis).

**WEIGHTED AVERAGE DAYS TO MATURITY:** The sum of all investment cost balances for securities active at the end of the report period, each multiplied by the days to maturity, then divided by total investment costs.

**WEIGHTED AVERAGE DAYS TO CALL:** The sum of all investment cost balances for securities active at the end of the report period, each multiplied by the days to the call date or if no call date, to the maturity date, then divided by total investment cost.

#### Section 3: Reconciliation to previous month's investment balances.





CITY OF SAN JOSE, CALIFORNIA  
 CASH MANAGEMENT PROGRAM REPORT TO THE CITY COUNCIL  
 FOR THE PERIOD 10/01/11 THROUGH 12/31/11

ON A DAILY AVERAGE BASIS FOR THIS PERIOD, THE TEMPORARILY IDLE CASH BALANCES OF ALL OF THE FUNDS OF THE CITY OF SAN JOSE WERE PLACED AS FOLLOWS:

ALL FUNDS SUMMARY

INVESTMENT TYPE	INVESTMENT EARNINGS AND RECEIPTS			
	-----			
	ACCRUED INTEREST			
DAILY AVERAGE	PERCENT	AMOUNT	INTEREST RECEIVED	
-----	-----	-----	-----	
BANKERS ACCEPTANCES	.00	.00	.00	.00
FEDERAL AGENCY SECURITIES	710,545,024.37	.77	1,371,325.94	1,702,822.19
CERTIFICATES OF DEPOSIT	.00	.00	.00	.00
U.S. TREASURY BILLS, BONDS AND NOTES	.00	.00	.00	.00
REPURCHASE AGREEMENTS	.00	.00	.00	.00
STATE POOL, PASSBOOK & MONEY MKT ACCTS	63,082,076.14	.37	58,608.40	58,512.67
COMMERCIAL PAPER	34,388,408.45	.28	24,437.84	15,079.09
NEGOTIABLE CD'S	30,054,347.83	.25	19,168.06	48,427.78
MEDIUM TERM CORPORATE NOTES	18,696,187.50	3.10	146,187.90	446,750.00
-----	-----	-----	-----	-----
INVESTMENTS SUB-TOTAL	856,766,044.28	.75	1,619,728.14	2,271,591.73
ACTIVE BANK BALANCES	3,639,960.56			
-----	-----	-----	-----	-----
TEMPORARILY IDLE CASH TOTAL	860,406,004.84	.75	1,619,728.14	2,271,591.73
-----	-----	-----	-----	-----

THE PAGES WHICH FOLLOW PROVIDE INFORMATION IN GREATER DETAIL UPON WHICH THE ALL FUNDS SUMMARY, ABOVE, HAS BEEN DEVELOPED. THIS REPORT PROVIDES A DETAILED LISTING OF INVESTMENTS BY INVESTMENT TYPE, AS WELL AS THE AMOUNTS EARNED AND/OR RECEIVED FROM EACH INVESTMENT.

CITY OF SAN JOSE  
TREASURY DIVISION  
PORTFOLIO STATISTICS  
7/01/11 THROUGH 12/31/11

PAGE: 1  
RUN: 01/19/12 14:28:45

ALL FUNDS

	FIXED		EQUITIES		TOTAL
	ASSETS	LIABILITIES	ASSETS	LIABILITIES	
TOTAL INCOME RECEIVED IN THIS PERIOD:	3,570,773.55	.00	.00	.00	3,570,773.55
TOTAL NET EARNINGS THIS PERIOD:	3,252,590.14	.00	.00	.00	3,252,590.14
AVERAGE DAILY PORTFOLIO BALANCE:	867,246,170.90	.00	.00	.00	867,246,170.90
EARNED INCOME YIELD THIS PERIOD:	.744	.000	.000	.000	.744
END OF PERIOD PORTFOLIO BALANCE:	926,961,888.16	.00	.00	.00	926,961,888.16
CURRENT AMORTIZED BOOK VALUE:	927,338,019.79	.00	.00	.00	927,338,019.79
WEIGHTED AVERAGE YIELD AT END OF PERIOD:	.634	.000	.000	.000	.634
WEIGHTED AVERAGE DAYS TO MATURITY:	523.67	.00	N/A	N/A	N/A
WEIGHTED AVERAGE DAYS TO CALL:	417.73	.00	N/A	N/A	N/A
NET PORTFOLIO YIELD, 365-DAY BASIS:					.744

SAN JOSE CITY SUMMARY				
	BALANCE 10/1/2011	SALES OR MATURITIES	ADDITIONS	BALANCE 12/31/2011
Time Deposits	0.00	0.00	0.00	0.00
UST Bills, Notes & Bonds	0.00	0.00	0.00	0.00
TB/N Stripped Coupon	0.00	0.00	0.00	0.00
Federal Agency Securities	691,317,466.99	105,813,646.22	159,295,493.10	744,799,313.87
Bankers Acceptance	0.00	0.00	0.00	0.00
Repurchase Agreements	0.00	0.00	0.00	0.00
Negotiable CD's	40,000,000.00	40,000,000.00	40,000,000.00	40,000,000.00
Commercial Paper/Discount	33,396,554.91	55,495,920.91	67,891,906.05	45,792,540.05
Corporate Medium Term Notes	24,928,250.00	24,928,250.00	0.00	0.00
Money Market Mutual Fund	2,190,000.00	0.00	0.00	2,190,000.00
State Pool	41,534,891.41	56,372,903.93	109,018,046.76	94,180,034.24
Total	833,367,163.31	282,610,721.06	376,205,445.91	926,961,888.16
		Net Change =	93,594,724.85	

**Portfolio Turnover Ratio:**

$\frac{\text{Purchase} + \text{Sales/Maturities (at cost)}}{\text{Average Daily Portfolio Balance}}$

**DECEMBER 2011 TURNOVER  
RATIO:**

**AVERAGE DAILY PORTFOLIO BALANCE (FS)**

0.7689569065                      times  
856,766,044.28

**CITY OF SAN JOSE  
TREASURY DIVISION  
SERIES II PORTFOLIO STATISTICS**

**07/01/11 - 12/31/11**

Fund & Description		Total Income Received	Total Net Earnings	Average Daily Portfolio Balance	Earned Income Yield This Period	End of Period Portfolio Balance	Current Amortized Book Value	Weighted Average Yield at End of Period	Weighted Average Days to Maturity
1	Investment Fund	3,546,465.94	3,226,972.87	853,725,805.86	0.750	913,433,451.50	913,807,014.02	0.638	529
34	CSJ/CSC Jt Pwr	0.00	1,309.46	851,402.42	0.305	851,402.42	853,972.53	0.305	5
55	RDA Series 2008B	24,307.61	24,307.81	12,668,962.63	0.381	12,677,034.24	12,677,034.24	0.381	182
<b>TOTAL</b>		3,570,773.55 *	3,252,590.14 *	867,246,170.90	0.744	926,961,888.16	927,338,019.79	0.634	524

\* Reconciled to Page A-1 Cash Management Program, Page A-2 Consolidated Portfolio Statistics



## SECTION B

### EARNED INTEREST SUMMARY

The Earned Interest Summary summarizes portfolio investment activity, cash interest receipts, and accrual-based earnings for all investments active during any part of the report period. Types of investments are described as follows:

**TIME DEPOSITS:** A deposit with a California bank or savings and loan association for a specific amount and with a specific maturity date and interest rate. Deposits of up to \$250,000 are insured by FDIC or FSLIC. Deposits over \$250,000 are collateralized above the insurance with either government securities (at 110% of par value), first trust deeds (at 150% of par value), or letters of credit (at 105% of par value).

**GOVERNMENT SECURITIES:** An issue of the US Treasury. May include US T-Bills (up to 1 year maturity), US T-Notes (maturity of up to 10 years), and US T-Bonds (maturity of longer than 10 years from date of issue). "Stripped Coupons" are coupons that have been physically separated from the original bond before being sold. The purchaser of the coupons in effect is buying the interest that will be paid on the underlying bond on a certain date.

**FEDERAL AGENCIES:** Any issue of various Federal Agencies, such as Federal National Mortgage Association, Federal Home Loan Bank, Federal Home Loan Mortgage Corporation, Federal Farm Credit Banks and Government National Mortgage Association.

**MEDIUM-TERM NOTES (MTNs):** Continuously offered notes, having any or all of the features of corporate bonds and ranging in maturity from nine months out to 30 years. The difference between corporate bonds and MTNs is that corporate bonds are underwritten.

**REPURCHASE AGREEMENTS:** A holder of securities (e.g. a "dealer") sells the securities to an investor (e.g. the City) with an agreement to repurchase the securities at a fixed price on a fixed date.

**REVERSE REPURCHASE AGREEMENTS:** A dealer buys securities from a client (e.g. the City) with an agreement to sell them back to the client at a fixed price on a fixed date.

**MONEY MARKET INSTRUMENTS:** Negotiable Certificates of Deposit, Commercial Paper and Banker's Acceptances. Negotiable Certificates of Deposit are large denomination certificates of deposit with a fixed maturity date which can be sold in the money market. They are not collateralized. Commercial Paper is an unsecured promissory note issued by a corporation. It has a fixed maturity (may not be more than 270 days) and is usually sold in discount form. Banker's Acceptances are drafts or bills of exchange accepted by a bank or trust company evidencing a loan created by the accepting bank. The accepting institution guarantees payment of the bill.

**LOCAL AGENCY INVESTMENT FUND:** An investment pool managed by the State Treasurer in which local governments and agencies in California may participate.

The subtotal line for each category includes the weighted average days to maturity for that category and also what percentage of the total portfolio the individual investment category represents.



(FS/ERNFS)

CITY OF SAN JOSE  
TREASURY DIVISION

PORTFOLIO STATISTICS  
10/01/11 THROUGH 12/31/11

PAGE: 1  
RUN: 01/19/12 14:22:48

FUND: 1 INVESTMENT FUNDS

	----- FIXED -----		----- EQUITIES -----		
	ASSETS	LIABILITIES	ASSETS	LIABILITIES	TOTAL
TOTAL INCOME RECEIVED IN THIS PERIOD:	2,259,426.95	.00	.00	.00	2,259,426.95
TOTAL NET EARNINGS THIS PERIOD:	1,606,908.40	.00	.00	.00	1,606,908.40
AVERAGE DAILY PORTFOLIO BALANCE:	843,239,323.46	.00	.00	.00	843,239,323.46
EARNED INCOME YIELD THIS PERIOD:	.756	.000	.000	.000	.756
END OF PERIOD PORTFOLIO BALANCE:	913,433,451.50	.00	.00	.00	913,433,451.50
CURRENT AMORTIZED BOOK VALUE:	913,807,014.02	.00	.00	.00	913,807,014.02
WEIGHTED AVERAGE YIELD AT END OF PERIOD:	.638	.000	.000	.000	.638
WEIGHTED AVERAGE DAYS TO MATURITY:	528.89	.00	N/A	N/A	N/A
WEIGHTED AVERAGE DAYS TO CALL:	421.39	.00	N/A	N/A	N/A
NET PORTFOLIO YIELD, 365-DAY BASIS:					.756

(FS/ERNFS)

CITY OF SAN JOSE  
TREASURY DIVISION

PORTFOLIO STATISTICS  
10/01/11 THROUGH 12/31/11

PAGE: 2  
RUN: 01/19/12 14:22:48

FUND: 34 CSJ/CSC Jt Pwr

	----- FIXED -----		----- EQUITIES -----		
	ASSETS	LIABILITIES	ASSETS	LIABILITIES	TOTAL
TOTAL INCOME RECEIVED IN THIS PERIOD:	.00	.00	.00	.00	.00
TOTAL NET EARNINGS THIS PERIOD:	654.73	.00	.00	.00	654.73
AVERAGE DAILY PORTFOLIO BALANCE:	851,402.42	.00	.00	.00	851,402.42
EARNED INCOME YIELD THIS PERIOD:	.305	.000	.000	.000	.305
END OF PERIOD PORTFOLIO BALANCE:	851,402.42	.00	.00	.00	851,402.42
CURRENT AMORTIZED BOOK VALUE:	853,971.53	.00	.00	.00	853,971.53
WEIGHTED AVERAGE YIELD AT END OF PERIOD:	.305	.000	.000	.000	.305
WEIGHTED AVERAGE DAYS TO MATURITY:	5.00	.00	N/A	N/A	N/A
WEIGHTED AVERAGE DAYS TO CALL:	5.00	.00	N/A	N/A	N/A
NET PORTFOLIO YIELD, 365-DAY BASIS:					.305



(FS/ERNFS)

CITY OF SAN JOSE  
TREASURY DIVISION

PORTFOLIO STATISTICS  
10/01/11 THROUGH 12/31/11

PAGE: 3  
RUN: 01/19/12 14:22:48

FUND: 55 Series 2008B-RDA Tax Allocation

	----- FIXED -----		----- EQUITIES -----		
	ASSETS	LIABILITIES	ASSETS	LIABILITIES	TOTAL
TOTAL INCOME RECEIVED IN THIS PERIOD:	12,164.78	.00	.00	.00	12,164.78
TOTAL NET EARNINGS THIS PERIOD:	12,165.01	.00	.00	.00	12,165.01
AVERAGE DAILY PORTFOLIO BALANCE:	12,675,318.41	.00	.00	.00	12,675,318.41
EARNED INCOME YIELD THIS PERIOD:	.381	.000	.000	.000	.381
END OF PERIOD PORTFOLIO BALANCE:	12,677,034.24	.00	.00	.00	12,677,034.24
CURRENT AMORTIZED BOOK VALUE:	12,677,034.24	.00	.00	.00	12,677,034.24
WEIGHTED AVERAGE YIELD AT END OF PERIOD:	.381	.000	.000	.000	.381
WEIGHTED AVERAGE DAYS TO MATURITY:	182.00	.00	N/A	N/A	N/A
WEIGHTED AVERAGE DAYS TO CALL:	182.00	.00	N/A	N/A	N/A
NET PORTFOLIO YIELD, 365-DAY BASIS:					.381

(FS/ERNFS)

CITY OF SAN JOSE  
TREASURY DIVISION

PORTFOLIO STATISTICS  
10/01/11 THROUGH 12/31/11

PAGE: 1  
RUN: 01/19/12 14:23:42

ALL FUNDS

	----- FIXED -----		----- EQUITIES -----		
	ASSETS	LIABILITIES	ASSETS	LIABILITIES	TOTAL
TOTAL INCOME RECEIVED IN THIS PERIOD:	2,271,591.73	.00	.00	.00	2,271,591.73
TOTAL NET EARNINGS THIS PERIOD:	1,619,728.14	.00	.00	.00	1,619,728.14
AVERAGE DAILY PORTFOLIO BALANCE:	856,766,044.28	.00	.00	.00	856,766,044.28
EARNED INCOME YIELD THIS PERIOD:	.750	.000	.000	.000	.750
END OF PERIOD PORTFOLIO BALANCE:	926,961,888.16	.00	.00	.00	926,961,888.16
CURRENT AMORTIZED BOOK VALUE:	927,338,019.79	.00	.00	.00	927,338,019.79
WEIGHTED AVERAGE YIELD AT END OF PERIOD:	.634	.000	.000	.000	.634
WEIGHTED AVERAGE DAYS TO MATURITY:	523.67	.00	N/A	N/A	N/A
WEIGHTED AVERAGE DAYS TO CALL:	417.73	.00	N/A	N/A	N/A
NET PORTFOLIO YIELD, 365-DAY BASIS:					.750

CITY OF SAN JOSE  
TREASURY DIVISION

(EIS / ERNEIS)

EARNED INCOME SUMMARY

10/01/11 THROUGH 12/31/11

SORT KEYS ARE FUND

FUND: 1 INVESTMENT FUNDS

PAGE: 1

RUN: 01/19/12 14:15:55

INV NO.	PURCHASE DATE	COUPON RATE	DESCRIPTION	TICKER / MATURITY DATE	SHARES / SCHEDULED PAR VALUE	SCHEDULED ORIG. COST	YIELD/ 365	DATE SOLD/MAT	INCOME RECEIVED THIS PER	TOTAL/NET EARNINGS
32936	01/01/02	.3808	STATE INVESTMT POOL-CTY	06/30/12	40,253,000.00	40,253,000.00	.381		39,291.74	39,291.70
33658	10/01/03	.3808	STATE INVESTMT POOL-RDA	06/30/12	41,250,000.00	41,250,000.00	.381		6,982.95	6,982.95
35860	10/14/08	3.6000	FFCB-WF	10/14/11	10,000,000.00	10,000,000.00	3.650	MATURED	180,000.00	13,000.00
35895	11/21/08	3.2000	FFCB-UBS	11/21/11	10,000,000.00	10,000,000.00	3.181	MATURED	160,000.00	44,444.44
35913	12/09/08	3.0000	MTN-GE CAPITAL CORP-BA	12/09/11	25,000,000.00	24,928,250.00	3.102	MATURED	446,750.00	146,187.90
36510	07/01/10	.0100	BLACKROCK LIQUIDITY FEDF	06/30/12	1,000,000.00	1,000,000.00	.028		27.15	71.41
36511	07/01/10	.0300	MORGAN STANLEY INST LIQ	06/30/12	641,000.00	641,000.00	.040		29.52	64.85
36512	07/01/10	.0100	FEDERATED GOVT OBLIGATIO	06/30/12	549,000.00	549,000.00	.023		16.53	32.48
36659	12/16/10	1.3500	FFCB-CALL-WF	12/16/13	5,000,000.00	5,000,000.00	1.351	12/16/11	33,750.00	14,062.50
36662	12/10/10	1.7500	FHLMC-WF	06/15/12	10,000,000.00	10,170,700.00	.599		87,500.00	15,351.45
36665	12/13/10	.5000	FHLB-GILFD	06/26/13	10,000,000.00	9,893,900.00	.924		25,000.00	23,041.25
36675	12/16/10	.2700	FHLMC-DISC-CITIG	10/21/11	20,046,000.00	19,999,543.40	.274	MATURED	46,456.60	3,006.90
36676	12/16/10	.2800	FHLMC-DISC-UBC	11/04/11	20,000,000.00	19,949,755.56	.285	MATURED	50,244.44	5,288.89
36685	12/23/10	.3000	FHLE-WF	11/23/11	10,000,000.00	9,996,800.00	.333	MATURED	18,200.00	4,839.60
36686	12/23/10	.4000	FFCB-WF	11/02/12	10,000,000.00	9,942,800.00	.708		20,000.00	17,738.82
36720	01/27/11	.7500	FNMA-WF	12/18/13	5,000,000.00	4,946,050.00	1.129		18,750.00	14,075.19
36727	02/03/11	.9200	FFCB-WF	11/26/13	5,000,000.00	4,966,850.00	1.156		23,000.00	14,469.62
36728	02/03/11	.8750	FHLMC-WF	10/28/13	5,000,000.00	4,964,350.00	1.137		21,875.00	14,223.87
36730	02/04/11	.7500	FNMA-WF	12/18/13	5,000,000.00	4,922,700.00	1.302		18,750.00	16,160.87
36735	02/09/11	.8750	FHLMC-WF	10/28/13	5,000,000.00	4,938,050.00	1.340		21,875.00	16,682.85
36736	02/09/11	.7000	FFCB-WF	11/04/13	10,000,000.00	9,820,600.00	1.374		35,000.00	34,021.33
36737	02/16/11	1.0000	FHLE-WF	05/16/13	5,000,000.00	5,000,000.00	.992		25,000.00	12,500.00
36739	02/10/11	1.3000	FFCB-WF	12/23/13	10,000,000.00	9,955,100.00	1.452		65,000.00	36,445.37
36740	02/10/11	1.1250	FNMA-WF	09/30/13	5,000,000.00	4,972,200.00	1.334		16,718.37	16,718.37
36760	03/07/11	1.0000	FNMA-CITIG	09/23/13	5,000,000.00	4,981,900.00	1.138			14,288.62
36761	03/07/11	1.3750	FHLMC-UBS	02/25/14	10,000,000.00	9,996,400.00	1.376			34,679.98
36763	03/08/11	1.1250	FNMA-GILFD	09/30/13	5,000,000.00	4,998,100.00	1.131			14,249.06
36764	03/08/11	.7500	FHLMC-WF	03/28/13	10,000,000.00	9,987,700.00	.805			20,256.79
36771	03/15/11	.2500	FHLE-WF	03/07/12	5,000,000.00	4,999,950.00	.249			3,137.85
36772	03/15/11	.8750	FNMA-CALL-GILF	11/08/13	2,505,000.00	2,488,517.10	5.919	11/08/11	27,442.28	15,333.63
36777	03/18/11	.8000	FNMA-CALL-GILF	11/18/13	5,000,000.00	4,964,050.00	1.070		20,000.00	13,388.73
36781	03/22/11	.3750	FHLMC-UBS	11/30/12	5,000,000.00	4,981,950.00	.587		9,375.00	7,370.21
36788	03/30/11	.8750	FHLE-WF	12/27/13	5,000,000.00	4,949,600.00	1.247		21,875.00	15,560.44
36789	03/30/11	.5150	FHLMC-WF	11/26/12	5,000,000.00	4,986,400.00	.676		12,875.00	8,498.78
36790	03/30/11	.3750	FHLMC-UBS	11/30/12	5,000,000.00	4,972,250.00	.707		9,375.00	8,865.90
36791	03/30/11	1.1500	FHLMC-CALL-GILF	10/07/13	5,000,000.00	4,986,500.00	14.334	10/07/11	42,250.00	11,749.54
36792	03/30/11	1.0000	FNMA-CALL-GILF	09/20/13	10,000,000.00	9,945,000.00	1.220			30,591.16
36793	03/30/11	.5700	FHLE-UBC	08/28/12	5,000,000.00	4,999,950.00	.566			7,133.90
36795	03/30/11	.2200	FNMA-DISC-WF	02/01/12	10,154,000.00	10,134,887.92	.223			5,708.80
36796	04/01/11	.2800	FHLMC-DISC-WF	03/13/12	14,327,000.00	14,288,333.02	.285			10,251.76
36798	04/04/11	.2300	FHLMC-DISC-CITIG	03/16/12	9,450,000.00	9,429,049.88	.234			5,554.50
36799	04/05/11	.8000	FNMA-CALL-WF	11/29/13	5,000,000.00	4,947,500.00	6.158	11/29/11	72,500.00	49,246.30
36800	04/05/11	.5000	FNMA-UBC	10/30/12	10,000,000.00	9,987,800.00	.574		25,000.00	14,455.40
36801	04/05/11	1.0000	FNMA-CITIG	09/23/13	5,000,000.00	4,993,900.00	1.042			13,122.18

CITY OF SAN JOSE  
TREASURY DIVISION

(EIS / ERNEIS)

EARNED INCOME SUMMARY  
10/01/11 THROUGH 12/31/11  
SORT KEYS ARE FUND  
FUND: 1 INVESTMENT FUNDS

PAGE: 2  
RUN: 01/19/12 14:15:55

INV NO.	PURCHASE DATE	COUPON RATE	DESCRIPTION	TICKER / MATURITY DATE	SHARES / SCHEDULED PAR VALUE	SCHEDULED ORIG. COST	YIELD/ 365	DATE SOLD/MAT	INCOME RECEIVED THIS PER	TOTAL/NET EARNINGS
36803	04/06/11	.9800	FFCB-UBC	09/23/13	5,000,000.00	4,987,850.00	1.073			13,490.62
36804	04/06/11	.7500	FNMA-WF	02/26/13	5,000,000.00	4,997,150.00	.774			9,753.90
36805	04/08/11	1.1700	FHLB-WF	11/08/13	5,000,000.00	5,000,000.00	1.160		29,250.00	14,625.00
36807	04/15/11	1.0000	FHLB-CITIG	08/15/13	5,000,000.00	5,000,000.00	.992			12,500.00
36810	04/28/11	1.2000	FHLB-GILFD	10/28/13	5,000,000.00	5,000,000.00	1.190		30,000.00	15,000.00
36822	04/18/11	.1400	FHLMC-DISC-UBC	11/18/11	18,453,000.00	18,437,643.00	.142	MATURED	15,357.00	3,444.56
36829	04/29/11	1.5000	FNMA-GILFD	09/08/14	10,000,000.00	9,996,500.00	1.499			37,762.21
36830	04/29/11	.3750	FHLMC-WF	11/30/12	5,000,000.00	4,991,700.00	.477		9,375.00	6,001.78
36831	05/09/11	1.3750	FHLMC-CITIG	05/09/14	10,000,000.00	10,000,000.00	1.364		68,750.00	34,375.00
36834	04/29/11	.3100	NCD-UBOC-UBC	10/07/11	20,000,000.00	20,000,000.00	.314	MATURED	27,727.78	1,033.34
36842	05/16/11	.7500	FHLB-WF	07/30/13	4,500,000.00	4,501,935.00	.724		16,875.00	8,216.63
36843	05/16/11	.7500	FHLB-WF	08/28/13	5,000,000.00	5,000,000.00	.744		18,750.00	9,375.00
36844	05/12/11	1.1500	FFCB-CITIG	05/12/14	5,000,000.00	5,000,000.00	1.141		28,750.00	14,375.00
36846	05/06/11	.3750	FNMA-WF	12/28/12	10,000,000.00	9,989,300.00	.437		18,750.00	11,010.22
36847	05/06/11	.3750	FHLMC-UBC	11/30/12	5,000,000.00	4,996,800.00	.413		9,375.00	5,200.39
36848	05/12/11	.8000	FNMA-UBC	11/18/13	5,000,000.00	4,993,150.00	.849		20,000.00	10,684.26
36853	06/15/11	2.2000	FNMA-WF	06/15/16	5,000,000.00	5,000,000.00	2.182		55,000.00	27,500.00
36854	06/13/11	1.6000	FHLMC-GILFD	03/13/15	5,000,000.00	5,000,000.00	1.587			20,000.00
36858	06/08/11	1.7700	FHLB-GILFD	06/08/15	3,000,000.00	3,000,000.00	1.756		26,550.00	13,275.00
36860	06/21/11	.5000	FHLB-WF	06/21/13	10,000,000.00	10,000,000.00	.496		25,000.00	12,500.00
36861	06/20/11	.6250	FFCB-UBC	11/20/13	5,000,000.00	5,000,000.00	.620		13,020.83	7,812.50
36863	06/27/11	.7000	FHLB-CALL-CITIG	09/27/13	10,000,000.00	10,000,000.00	.694		35,000.00	17,500.00
36864	06/30/11	1.0300	FHLB-WF	10/23/14	10,000,000.00	10,000,000.00	1.022		32,330.56	25,750.01
36865	06/23/11	.7000	FHLB-WF	01/30/14	10,000,000.00	9,989,600.00	.735			18,505.04
36866	06/23/11	.8750	FFCB-WF	06/23/14	10,000,000.00	9,992,600.00	.893		43,750.00	22,496.17
36867	06/30/11	.8500	FHLB-GILFD	04/30/14	5,000,000.00	5,000,000.00	.843		14,166.67	10,625.00
36868	06/29/11	.4000	FFCB-UBS	04/29/13	10,000,000.00	10,000,000.00	.397		13,333.33	10,000.00
36870	06/23/11	.2300	NCD-UBOC-UBC	12/02/11	20,000,000.00	20,000,000.00	.233	MATURED	20,700.00	7,922.22
36871	06/23/11	.4000	FHLB-WF	04/30/13	10,000,000.00	9,998,100.00	.407		14,111.11	10,258.20
36872	06/23/11	.5000	FNMA-WF	08/09/13	10,000,000.00	9,995,700.00	.516			13,008.48
36878	06/24/11	.1000	FNMA-DISC-WF	02/01/12	14,484,000.00	14,475,068.20	.101			3,701.47
36879	06/30/11	1.0000	FHLB-GILF	10/17/14	5,100,000.00	5,100,000.00	.992		15,158.33	12,749.99
36880	06/30/11	1.0000	FHLB-GILFD	10/17/14	4,900,000.00	4,900,000.00	.992		14,563.89	12,250.00
36882	06/30/11	1.1250	FHLB-GILFD	12/29/14	4,500,000.00	4,493,070.00	1.162		25,171.87	13,155.11
36883	07/19/11	2.1250	FNMA-CALL-GILFD	07/19/16	5,000,000.00	5,000,000.00	2.108			26,562.50
36884	07/19/11	2.1250	FNMA-CALL-GILFD	07/19/16	5,000,000.00	5,000,000.00	2.108			26,562.50
36885	07/13/11	.5000	FNMA-GILFD	08/09/13	5,000,000.00	4,995,850.00	.536			6,753.70
36887	07/25/11	.1700	FHLB-DISC-CITIG	06/01/12	20,000,000.00	19,970,533.33	.173			8,688.89
36890	08/03/11	.2100	CP-DISC-TOYOTA-TOY	10/12/11	6,000,000.00	5,997,550.00	.213	MATURED	2,450.00	385.00
36891	08/03/11	.1500	FHLMC-DISC-WF	02/24/12	5,795,000.00	5,790,050.10	.152			2,221.41
36892	09/12/11	.6250	FNMA-CALL-GILFD	09/12/14	5,000,000.00	5,000,000.00	.620			7,812.50
36893	09/12/11	.7500	FNMA-CALL-WF	09/12/14	5,000,000.00	5,000,000.00	.744			9,375.00
36894	09/12/11	.8000	FNMA-CALL-WF	03/12/15	5,000,000.00	4,993,750.00	.830			10,450.28
36896	08/26/11	.5000	FHLMC-WF	09/19/14	10,000,000.00	9,969,600.00	.597			14,997.15

CITY OF SAN JOSE  
TREASURY DIVISION

(EIS / ERNEIS)

EARNED INCOME SUMMARY

10/01/11 THROUGH 12/31/11

SORT KEYS ARE FUND

FUND: 1 INVESTMENT FUNDS

PAGE: 3  
RUN: 01/19/12 14:15:55

INV NO.	PURCHASE DATE	COUPON RATE	DESCRIPTION	TICKER / MATURITY DATE	SHARES / SCHEDULED PAR VALUE	SCHEDULED ORIG. COST	YIELD/ 365	DATE SOLD/MAT	INCOME RECEIVED THIS PER	TOTAL/NET EARNINGS
36897	08/30/11	.2900	CP-DISC-TOYOTA-TOY	12/16/11	10,009,000.00	10,000,292.17	.294	MATURED	8,707.83	6,127.73
36898	09/19/11	.5000	FNMA-CALL-UBS	09/19/13	10,000,000.00	10,000,000.00	.496			12,500.00
36899	09/01/11	.1500	CP-DISC-UBS FIN DEL-UBS	10/03/11	6,000,000.00	5,999,200.00	.152	MATURED	800.00	50.00
36900	09/01/11	.2000	CP-DISC-TOYOTA-TOY	10/24/11	6,002,000.00	6,000,232.74	.203	MATURED	1,767.26	766.92
36901	09/02/11	.1250	FHLB-WF	08/15/12	10,000,000.00	9,993,090.28	.203			5,107.76
36902	09/07/11	.1500	FHLB-WF	06/07/12	5,000,000.00	4,999,150.00	.171			2,160.40
36903	09/02/11	.1400	FHLB-WF	06/18/12	5,000,000.00	4,999,372.22	.162			2,035.52
36904	09/19/11	.7000	FNMA-CALL-WF	09/19/14	5,000,000.00	5,000,000.00	.694			8,750.00
36905	09/09/11	.1500	FNMA-DISC-CITIG	07/02/12	9,512,000.00	9,500,228.90	.152			3,646.27
36906	09/23/11	.2500	FFCB-GILFD	08/19/13	10,000,000.00	9,983,361.11	.348			8,761.50
36907	09/23/11	.3750	FHLMC-CITIG	10/30/13	5,000,000.00	5,001,150.00	.361		1,927.09	4,549.74
36909	09/23/11	.3500	FFCB-GILFD	09/23/13	5,000,000.00	4,997,000.00	.377			4,752.57
36910	09/29/11	.5300	FFCB-UBC	09/29/14	5,000,000.00	5,000,000.00	.526			6,625.00
36911	09/23/11	.3500	FFCB-UBS	09/23/13	5,000,000.00	4,997,000.00	.377			4,752.57
36912	09/23/11	.1300	FNMA-DISC-UBS	07/02/12	5,010,000.00	5,004,880.06	.132			1,664.44
36914	09/28/11	.3750	FHLMC-WF	10/30/13	5,000,000.00	4,995,300.00	.417		1,666.67	5,254.21
36915	09/28/11	.5000	FHLMC-GILFD	09/19/14	5,000,000.00	4,977,825.00	.652			8,179.71
36916	09/28/11	.3000	FHLB-UBC	03/19/13	5,000,000.00	4,997,525.00	.336			4,237.36
36917	09/28/11	.1200	CP-DISC-TOYOTA-TOY	11/07/11	5,400,000.00	5,399,280.00	.122	MATURED	720.00	666.00
36918	10/04/11	.6250	FNMA-GILFD	10/30/14	5,000,000.00	4,996,200.00	.645		2,256.94	7,853.51
36919	10/07/11	.1200	FHLB-DISC-CITIG	07/02/12	14,163,000.00	14,150,300.51	.122			4,060.06
36920	10/11/11	.7500	FHLMC-WF	11/25/14	10,000,000.00	9,996,900.00	.752		9,166.66	16,889.45
36921	10/11/11	.2700	NCD-UBOC-UBC	02/01/12	10,000,000.00	10,000,000.00	.274			6,150.00
36923	10/18/11	.5000	FHLMC-GILFD	10/18/13	5,000,000.00	4,994,750.00	.546			5,608.09
36924	10/28/11	1.5000	FNMA-GILFD	10/28/16	5,000,000.00	5,000,000.00	1.474			13,125.00
36925	10/12/11	.1000	FNMA-DISC-UBS	07/02/12	10,000,000.00	9,992,666.67	.101			2,250.00
36926	10/14/11	.3750	FHLB-UBS	11/27/13	5,000,000.00	4,988,900.00	.476		2,239.58	5,141.89
36927	10/20/11	.1200	FNMA-DISC-CITIG	07/02/12	9,225,000.00	9,217,128.00	.122			2,244.75
36928	10/21/11	.2600	CP-DISC-TOYOTA-TOY	02/01/12	6,243,000.00	6,238,355.90	.264			3,246.36
36929	10/31/11	.3900	CP-DISC-HSBC FIN CORP-JP	02/01/12	8,227,000.00	8,218,711.30	.396			5,525.80
36930	11/25/11	1.0000	FHLMC-CALL-WF	11/25/15	5,000,000.00	5,000,000.00	.986			5,000.00
36931	11/15/11	.0700	CP-DISC-UBS FIN DEL-UBS	11/21/11	16,000,000.00	15,999,813.33	.071	MATURED	186.67	186.67
36932	11/18/11	.3000	CP-DISC-UBS FIN DEL-UBS	01/18/12	6,572,000.00	6,568,659.23	.304			2,409.74
36934	11/21/11	.3750	FHLMC-WF	10/30/13	5,000,000.00	4,984,193.75	.547			3,060.62
36935	11/21/11	.6250	FNMA-UBS	10/30/14	5,000,000.00	4,985,822.92	.729			4,083.02
36936	11/30/11	.3300	FHLB-UBC	07/01/13	10,000,000.00	9,996,700.00	.345			3,024.05
36937	11/23/11	.8750	FHLMC-CALL-UBC	11/14/14	5,000,000.00	4,999,793.75	.873			4,664.70
36938	11/29/11	.3750	FFCB-WF	09/06/13	10,000,000.00	10,002,445.83	.404			3,649.56
36939	11/29/11	.3000	FHLB-WF	05/16/13	5,000,000.00	4,999,041.67	.316			1,426.03
36941	11/29/11	.7500	FNMA-UBC	12/19/14	5,000,000.00	5,000,000.00	.737		2,083.34	3,333.34
36942	11/30/11	.3500	FHLB-UBC	05/30/13	5,000,000.00	5,000,000.00	.344			1,506.94
36943	12/16/11	1.0000	FHLMC-CALL-GILFD	06/16/15	5,000,000.00	4,996,550.00	.971			2,126.52
36944	12/19/11	1.5000	FHLMC-CALL-GILFD	12/19/16	5,000,000.00	5,000,000.00	1.404			2,500.00
36945	11/29/11	.3500	FHLB-CALL-CITIG	08/10/12	6,000,000.00	6,001,808.33	.344			1,866.67

CITY OF SAN JOSE  
TREASURY DIVISION

(EIS / ERNEIS)

EARNED INCOME SUMMARY  
10/01/11 THROUGH 12/31/11  
SORT KEYS ARE FUND  
FUND: 1 INVESTMENT FUNDS

PAGE: 4  
RUN: 01/19/12 14:15:55

INV NO.	PURCHASE DATE	COUPON RATE	DESCRIPTION	TICKER / MATURITY DATE	SHARES / SCHEDULED PAR VALUE	SCHEDULED ORIG. COST	YIELD/ 365	DATE SOLD/MAT	INCOME RECEIVED THIS PER	TOTAL/NET EARNINGS
36947	12/08/11	.1200	CP-DISC-HSBC FIN CORP-JP	12/30/11	6,100,000.00	6,099,552.67	.122	MATURED	447.33	447.33
36948	12/09/11	.2500	NCD-UBOC-UBC	02/01/12	15,000,000.00	15,000,000.00	.253			2,395.83
36949	12/09/11	.3600	CP-DISC-HSBC FIN CORP-PM	02/22/12	12,855,000.00	12,845,358.75	.365			2,956.65
36950	12/14/11	.2800	CP-DISC-HSBC FIN CORP-JP	02/01/12	11,926,000.00	11,921,454.87	.284			1,669.64
36951	12/30/11	1.0000	FHLMC-CALL-UBS	09/30/15	5,000,000.00	5,000,000.00	.507			138.89
36952	12/27/11	.6500	FHLMC-CALL-GILFD	06/27/14	5,000,000.00	4,999,250.00	.533			365.22
36953	12/19/11	.7500	FNMA-CALL-WF	12/19/14	10,000,000.00	10,000,000.00	.702			2,500.00
36954	12/16/11	.2500	NCD-UBOC-UBC	02/01/12	15,000,000.00	15,000,000.00	.253			1,666.67
36955	12/16/11	.6250	FHLMC-GILFD	12/29/14	5,000,000.00	4,990,750.00	.656			1,435.53
SUBTOTAL (FUND) 1 INVESTMENT FUNDS			- ASSETS	528 DAYS	914,636,000.00	913,433,451.50			2,259,426.95	1,606,908.40
SUBTOTAL (FUND) 1 INVESTMENT FUNDS			- NET		914,636,000.00	913,433,451.50			2,259,426.95	1,606,908.40

FUND STATISTICS		ASSETS	LIABILITIES
AVERAGE DAILY INVESTMENT BALANCE		: 843,239,323.46	
EARNED INTEREST YIELD THIS PERIOD		: .756	.000
WEIGHTED AVG YIELD AT END OF PERIOD		: .638	.000
TOTAL INTEREST EARNED FOR FUTURE RECEIPT:		1,244,151.33	

C I T Y O F S A N J O S E  
T R E A S U R Y D I V I S I O N

(EIS / ERNEIS)

E A R N E D I N C O M E S U M M A R Y  
10/01/11 THROUGH 12/31/11  
SORT KEYS ARE FUND  
FUND: 34 CSJ/CSC Jt Pwr

PAGE: 5  
RUN: 01/19/12 14:15:55

INV NO.	PURCHASE DATE	COUPON RATE	DESCRIPTION	TICKER / MATURITY DATE	SHARES / SCHEDULED PAR VALUE	SCHEDULED ORIG. COST	YIELD/ 365	DATE SOLD/MAT	INCOME RECEIVED THIS PER	TOTAL/NET EARNINGS
36696	01/05/11	.3000	FHLB-DISC-CITIG	01/05/12	854,000.00	851,402.42	.305			654.73
SUBTOTAL (FUND) 34 CSJ/CSC Jt Pwr			- ASSETS	5 DAYS	854,000.00	851,402.42			.00	654.73
SUBTOTAL (FUND) 34 CSJ/CSC Jt Pwr			- NET		854,000.00	851,402.42			.00	654.73

FUND STATISTICS		ASSETS	LIABILITIES
AVERAGE DAILY INVESTMENT BALANCE	:	851,402.42	
EARNED INTEREST YIELD THIS PERIOD	:	.305	.000
WEIGHTED AVG YIELD AT END OF PERIOD	:	.305	.000
TOTAL INTEREST EARNED FOR FUTURE RECEIPT:		2,569.11	

C I T Y O F S A N J O S E  
T R E A S U R Y D I V I S I O N

(EIS / ERNEIS)

E A R N E D I N C O M E S U M M A R Y

10/01/11 THROUGH 12/31/11

SORT KEYS ARE FUND

FUND: 55 Series 2008B-RDA Tax Allocation

PAGE: 6  
RUN: 01/19/12 14:15:55

INV NO.	PURCHASE DATE	COUPON RATE	DESCRIPTION	TICKER / MATURITY DATE	SHARES / SCHEDULED PAR VALUE	SCHEDULED ORIG. COST	YIELD/ 365	DATE SOLD/MAT	INCOME RECEIVED THIS PER	TOTAL/NET EARNINGS
35894	11/14/08	.3808	Series 2008 B-RDA Tax Al	06/30/12	12,677,034.24	12,677,034.24	.381		12,164.78	12,164.77
SUBTOTAL (FUND) 55 Series 2008B-RDA Ta- ASSETS 181 DAYS					12,677,034.24	12,677,034.24			12,164.78	12,164.77
SUBTOTAL (FUND) 55 Series 2008B-RDA Ta- NET					12,677,034.24	12,677,034.24			12,164.78	12,164.77

FUND STATISTICS		ASSETS	LIABILITIES
AVERAGE DAILY INVESTMENT BALANCE	:	12,675,318.41	
EARNED INTEREST YIELD THIS PERIOD	:	.381	.000
WEIGHTED AVG YIELD AT END OF PERIOD	:	.381	.000
TOTAL INTEREST EARNED FOR FUTURE RECEIPT:			

GRAND TOTAL 100.00%(C) 523 DAYS 928,167,034.24 926,961,888.16 .750 2,271,591.73 1,619,727.90



(FS/ERNFS)

CITY OF SAN JOSE  
TREASURY DIVISION

PORTFOLIO STATISTICS  
7/01/11 THROUGH 12/31/11

PAGE: 1  
RUN: 01/19/12 14:28:45

ALL FUNDS

	----- FIXED -----		----- EQUITIES -----		
	ASSETS	LIABILITIES	ASSETS	LIABILITIES	TOTAL
TOTAL INCOME RECEIVED IN THIS PERIOD:	3,570,773.55	.00	.00	.00	3,570,773.55
TOTAL NET EARNINGS THIS PERIOD:	3,252,590.14	.00	.00	.00	3,252,590.14
AVERAGE DAILY PORTFOLIO BALANCE:	867,246,170.90	.00	.00	.00	867,246,170.90
EARNED INCOME YIELD THIS PERIOD:	.744	.000	.000	.000	.744
END OF PERIOD PORTFOLIO BALANCE:	926,961,888.16	.00	.00	.00	926,961,888.16
CURRENT AMORTIZED BOOK VALUE:	927,338,019.79	.00	.00	.00	927,338,019.79
WEIGHTED AVERAGE YIELD AT END OF PERIOD:	.634	.000	.000	.000	.634
WEIGHTED AVERAGE DAYS TO MATURITY:	523.67	.00	N/A	N/A	N/A
WEIGHTED AVERAGE DAYS TO CALL:	417.73	.00	N/A	N/A	N/A
NET PORTFOLIO YIELD, 365-DAY BASIS:					.744

(FS/ERNFS)

CITY OF SAN JOSE  
TREASURY DIVISION

PORTFOLIO STATISTICS  
7/01/11 THROUGH 12/31/11

PAGE: 1  
RUN: 01/19/12 14:28:05

FUND: 1 INVESTMENT FUNDS

	----- FIXED -----		----- EQUITIES -----		
	ASSETS	LIABILITIES	ASSETS	LIABILITIES	TOTAL
TOTAL INCOME RECEIVED IN THIS PERIOD:	3,546,465.94	.00	.00	.00	3,546,465.94
TOTAL NET EARNINGS THIS PERIOD:	3,226,972.87	.00	.00	.00	3,226,972.87
AVERAGE DAILY PORTFOLIO BALANCE:	853,725,805.86	.00	.00	.00	853,725,805.86
EARNED INCOME YIELD THIS PERIOD:	.750	.000	.000	.000	.750
END OF PERIOD PORTFOLIO BALANCE:	913,433,451.50	.00	.00	.00	913,433,451.50
CURRENT AMORTIZED BOOK VALUE:	913,807,014.02	.00	.00	.00	913,807,014.02
WEIGHTED AVERAGE YIELD AT END OF PERIOD:	.638	.000	.000	.000	.638
WEIGHTED AVERAGE DAYS TO MATURITY:	528.89	.00	N/A	N/A	N/A
WEIGHTED AVERAGE DAYS TO CALL:	421.39	.00	N/A	N/A	N/A
NET PORTFOLIO YIELD, 365-DAY BASIS:					.750

(FS/ERNFS)

CITY OF SAN JOSE  
TREASURY DIVISION

PORTFOLIO STATISTICS  
7/01/11 THROUGH 12/31/11

PAGE: 2  
RUN: 01/19/12 14:28:05

FUND: 34 CSJ/CSC Jt Pwr

	----- FIXED -----		----- EQUITIES -----		
	ASSETS	LIABILITIES	ASSETS	LIABILITIES	TOTAL
TOTAL INCOME RECEIVED IN THIS PERIOD:	.00	.00	.00	.00	.00
TOTAL NET EARNINGS THIS PERIOD:	1,309.46	.00	.00	.00	1,309.46
AVERAGE DAILY PORTFOLIO BALANCE:	851,402.42	.00	.00	.00	851,402.42
EARNED INCOME YIELD THIS PERIOD:	.305	.000	.000	.000	.305
END OF PERIOD PORTFOLIO BALANCE:	851,402.42	.00	.00	.00	851,402.42
CURRENT AMORTIZED BOOK VALUE:	853,971.53	.00	.00	.00	853,971.53
WEIGHTED AVERAGE YIELD AT END OF PERIOD:	.305	.000	.000	.000	.305
WEIGHTED AVERAGE DAYS TO MATURITY:	5.00	.00	N/A	N/A	N/A
WEIGHTED AVERAGE DAYS TO CALL:	5.00	.00	N/A	N/A	N/A
NET PORTFOLIO YIELD, 365-DAY BASIS:					.305

(FS/ERNFS)

CITY OF SAN JOSE  
TREASURY DIVISION

PORTFOLIO STATISTICS  
7/01/11 THROUGH 12/31/11

PAGE: 3  
RUN: 01/19/12 14:28:05

FUND: 55 Series 2008B-RDA Tax Allocation

	----- FIXED -----		----- EQUITIES -----		
	ASSETS	LIABILITIES	ASSETS	LIABILITIES	TOTAL
TOTAL INCOME RECEIVED IN THIS PERIOD:	24,307.61	.00	.00	.00	24,307.61
TOTAL NET EARNINGS THIS PERIOD:	24,307.81	.00	.00	.00	24,307.81
AVERAGE DAILY PORTFOLIO BALANCE:	12,668,962.63	.00	.00	.00	12,668,962.63
EARNED INCOME YIELD THIS PERIOD:	.381	.000	.000	.000	.381
END OF PERIOD PORTFOLIO BALANCE:	12,677,034.24	.00	.00	.00	12,677,034.24
CURRENT AMORTIZED BOOK VALUE:	12,677,034.24	.00	.00	.00	12,677,034.24
WEIGHTED AVERAGE YIELD AT END OF PERIOD:	.381	.000	.000	.000	.381
WEIGHTED AVERAGE DAYS TO MATURITY:	182.00	.00	N/A	N/A	N/A
WEIGHTED AVERAGE DAYS TO CALL:	182.00	.00	N/A	N/A	N/A
NET PORTFOLIO YIELD, 365-DAY BASIS:					.381

CITY OF SAN JOSE  
TREASURY DIVISION  
EARNED INCOME DETAIL  
7/01/11 THROUGH 12/31/11  
SORT KEYS ARE FUND  
ALL FUNDS

INV NO.	DESCRIPTION PURCH RATE MATURITY	CURRENT PERIOD ENDING PAR	PRIOR PERIOD STORED ACCRL.	PRIOR PERIOD CALC. ADJUST.	SCHEDULED ACCRUALS	POSTED ACCL. ADJUSTMENTS	POSTED RECEIPTS	PERIOD END ACCRUED	GAIN/(LOSS) SALE/WRTDWN	EARNED THIS PERIOD	TOTAL/NET EARNINGS
32936	STATE INVESTMT POOL-CTY I 01/01/02 .381 06/30/12	40,253,000.00		-2.40	82,751.79		82,751.91	-2.52		82,751.79	82,751.79
33658	STATE INVESTMT POOL-RDA I 10/01/03 .381 06/30/12	41,250,000.00		-2.11	31,426.64		31,426.71	-2.18		31,426.64	31,426.64
35860	FFCB-WF I 10/14/08 3.600 10/14/11		77,000.00		103,000.00		180,000.00			103,000.00	103,000.00
35895	FFCB-UBS I 11/21/08 3.200 11/21/11		35,555.56		124,444.44		160,000.00			124,444.44	124,444.44
35913	MTN-GE CAPITAL CORP-BA I 12/09/08 3.000 12/09/11D		45,833.33 61,200.46		329,166.67 10,549.54		375,000.00 71,750.00			329,166.67 10,549.54	339,716.21
36510	BLACKROCK LIQUIDITY FED I 07/01/10 .010 06/30/12	1,000,000.00		-956.30	222.65		53.34	-786.99		222.65	222.65
36511	MORGAN STANLEY INST LIQ I 07/01/10 .030 06/30/12	641,000.00		-162.99	162.28		48.59	-49.30		162.28	162.28
36512	FEDERATED GOVT OBLIGATI I 07/01/10 .010 06/30/12	549,000.00		-750.33	101.66		30.67	-679.34		101.66	101.66
36515	FNMA-DISC-UBS I 07/07/10 .430 07/01/11D			107,201.39			107,201.39				
36522	FNMA-DISC-UBS I 07/13/10 .390 07/01/11D			76,483.33			76,483.33				
36523	FNMA-DISC-BA I 07/13/10 .390 07/01/11D			73,691.69			73,691.69				
36526	FNMA-DISC-WF I 07/14/10 .390 07/01/11D			114,400.00			114,400.00				
36550	FNMA-DISC-UBS I 08/06/10 .310 07/01/11D			56,661.11			56,661.11				
36563	FHLB-DISC-UBS I 08/20/10 .230 07/01/11D			26,162.50			26,162.50				

CITY OF SAN JOSE  
TREASURY DIVISION  
EARNED INCOME DETAIL  
7/01/11 THROUGH 12/31/11  
SORT KEYS ARE FUND  
ALL FUNDS

INV NO.	DESCRIPTION PURCH RATE MATURITY	CURRENT PERIOD ENDING PAR	PRIOR PERIOD STORED ACRL.	PRIOR PERIOD CALC. ADJUST.	SCHEDULED ACCRUALS	POSTED ACRL. ADJUSTMENTS	POSTED RECEIPTS	PERIOD END ACCRUED	GAIN/(LOSS) SALE/WRTDWN	EARNED THIS PERIOD	TOTAL/NET EARNINGS
36600	FNMA-DISC-WF I 10/01/10 .200 07/01/11D						45,500.00				
36637	CP-DISC-TOYOTA-TOY I 11/16/10 .400 07/15/11D		45,500.00								3,888.89
36659	FFCB-CALL-WF I 12/16/10 1.350 12/16/13		63,055.55		3,888.89		66,944.44			3,888.89	30,937.50
36662	FHLMC-WF I 12/10/10 1.750 06/15/12P	10,000,000.00	2,812.50		30,937.50		33,750.00			30,937.50	30,937.50
36663	FHLMC-DISC-UBC I 12/10/10 .230 07/29/11D		7,777.78		87,500.00		87,500.00	7,777.78		87,500.00	30,702.90
36665	FHLB-GILFD I 12/13/10 .500 06/26/13D	10,000,000.00	-62,662.03		-56,797.10			-119,459.13		-56,797.10	
36670	FHLMC-DISC-CITIG I 12/15/10 .230 07/29/11D		12,969.44		1,788.89		14,758.33			1,788.89	1,788.89
36675	FHLMC-DISC-CITIG I 12/16/10 .270 10/21/11D		694.44		25,000.00		25,000.00	694.44		25,000.00	46,082.50
36676	FHLMC-DISC-UBC I 12/16/10 .280 11/04/11D		22,915.77		21,082.50			43,998.27		21,082.50	
36685	FHLB-WF I 12/23/10 .300 11/23/11D		6,618.48		935.95		7,554.43			935.95	935.95
36686	FFCB-WF I 12/23/10 .400 11/02/12D	10,000,000.00	29,617.96		16,838.64		46,456.60			16,838.64	16,838.64
36689	FHLMC-DISC-UBS I 12/27/10 .220 08/26/11D		30,644.44		19,600.00		50,244.44			19,600.00	19,600.00
36690	FHLMC-DISC-CITIG I 12/28/10 .210 08/12/11D		3,166.67		11,833.33		15,000.00			11,833.33	13,218.40
36697	FHLMC-CALL-GILFD I 01/25/11 1.250 07/25/13		1,814.93		1,385.07		3,200.00			1,385.07	
			6,555.56		20,000.00		20,000.00	6,555.56		20,000.00	35,477.65
			15,982.35		15,477.65			31,460.00		15,477.65	
			22,766.30		6,854.37		29,620.67			6,854.37	6,854.37
			19,085.06		4,332.83		23,417.89			4,332.83	4,332.83
			54,166.67		8,333.33		62,500.00			8,333.33	8,333.33

CITY OF SAN JOSE  
TREASURY DIVISION  
EARNED INCOME DETAIL  
7/01/11 THROUGH 12/31/11  
SORT KEYS ARE FUND  
ALL FUNDS

INV NO.	DESCRIPTION PURCH RATE MATURITY	CURRENT PERIOD ENDING PAR	PRIOR PERIOD STORED ACRL.	PRIOR PERIOD CALC. ADJUST.	SCHEDULED ACCRUALS	POSTED ACRL. ADJUSTMENTS	POSTED RECEIPTS	PERIOD END ACCRUED	GAIN/(LOSS) SALE/WRTDWN	EARNED THIS PERIOD	TOTAL/NET EARNINGS
36703	FHLMC-DISC-CITIG I 01/10/11 .220 08/24/11D		15,787.69		4,956.60		20,744.29			4,956.60	4,956.60
36720	FNMA-WF I 01/27/11 .750 12/18/13D	5,000,000.00	1,354.17 7,918.80		18,750.00 9,400.38		18,750.00	1,354.17 17,319.18		18,750.00 9,400.38	28,150.38
36727	FFCB-WF I 02/03/11 .920 11/26/13D	5,000,000.00	4,472.22 4,777.22		23,000.00 5,939.24		23,000.00	4,472.22 10,716.46		23,000.00 5,939.24	28,939.24
36728	FHLMC-WF I 02/03/11 .875 10/28/13D	5,000,000.00	7,656.25 5,286.77		21,875.00 6,572.75		21,875.00	7,656.25 11,859.52		21,875.00 6,572.75	28,447.75
36730	FNMA-WF I 02/04/11 .750 12/18/13D	5,000,000.00	1,354.17 10,842.65		18,750.00 13,571.75		18,750.00	1,354.17 24,414.40		18,750.00 13,571.75	32,321.75
36735	FHLMC-WF I 02/09/11 .875 10/28/13D	5,000,000.00	7,656.25 8,867.84		21,875.00 11,490.72		21,875.00	7,656.25 20,358.56		21,875.00 11,490.72	33,365.72
36736	FFCB-WF I 02/09/11 .700 11/04/13D	10,000,000.00	11,083.33 25,500.30		35,000.00 33,042.65		35,000.00	11,083.33 58,542.95		35,000.00 33,042.65	68,042.65
36737	FHLB-WF I 02/16/11 1.000 05/16/13	5,000,000.00	6,250.00		25,000.00		25,000.00	6,250.00		25,000.00	25,000.00
36739	FFCB-WF I 02/10/11 1.300 12/23/13D	10,000,000.00	2,888.89 6,046.70		65,000.00 7,890.74		65,000.00	2,888.89 13,937.44		65,000.00 7,890.74	72,890.74
36740	FNMA-WF I 02/10/11 1.125 09/30/13D	5,000,000.00	14,218.75 4,070.40		28,125.00 5,311.74		28,125.00	14,218.75 9,382.14		28,125.00 5,311.74	33,436.74
36760	FNMA-CITIG I 03/07/11 1.000 09/23/13D	5,000,000.00	13,611.11 2,255.21		25,000.00 3,577.23		25,000.00	13,611.11 5,832.44		25,000.00 3,577.23	28,577.23
36761	FHLMC-UBS I 03/07/11 1.375 02/25/14D	10,000,000.00	66,840.28 384.53		68,750.00 609.94		87,465.28	48,125.00 994.47		68,750.00 609.94	69,359.94
36763	FNMA-GILFD I 03/08/11 1.125 09/30/13D	5,000,000.00	14,218.75 233.19		28,125.00 373.11		28,125.00	14,218.75 606.30		28,125.00 373.11	28,498.11
36764	FHLMC-WF I 03/08/11 .750 03/28/13D	10,000,000.00	19,375.00 1,883.49		37,500.00 3,013.58		37,500.00	19,375.00 4,897.07		37,500.00 3,013.58	40,513.58

CITY OF SAN JOSE  
TREASURY DIVISION  
EARNED INCOME DETAIL  
7/01/11 THROUGH 12/31/11  
SORT KEYS ARE FUND  
ALL FUNDS

INV NO.	DESCRIPTION PURCH RATE MATURITY	CURRENT PERIOD ENDING PAR	PRIOR PERIOD STORED ACRL.	PRIOR PERIOD CALC. ADJUST.	SCHEDULED ACCRUALS	POSTED ACRL. ADJUSTMENTS	POSTED RECEIPTS	PERIOD END ACCRUED	GAIN/(LOSS) SALE/WRTDWN	EARNED THIS PERIOD	TOTAL/NET EARNINGS
36771	FHLB-WF 03/15/11 .250 03/07/12D	I 5,000,000.00	3,958.34 15.08		6,249.99 25.70		6,250.00	3,958.33 40.78		6,249.99 25.70	6,275.69
36772	FNMA-CALL-GILF 03/15/11 .875 11/08/13D	I	3,226.93 1,837.10		7,732.45 -1,837.10		10,959.38		16,482.90	7,732.45 14,645.80	22,378.25
36777	FNMA-CALL-GILF 03/18/11 .800 11/18/13D	I 5,000,000.00	4,777.78 3,867.57		20,000.00 6,777.46		20,000.00	4,777.78 10,645.03		20,000.00 6,777.46	26,777.46
36781	FHLMC-UBS 03/22/11 .375 11/30/12D	I 5,000,000.00	1,614.58 2,945.15		9,375.00 5,365.43		9,375.00	1,614.58 8,310.58		9,375.00 5,365.43	14,740.43
36788	FHLB-WF 03/30/11 .875 12/27/13D	I 5,000,000.00	486.11 4,673.18		21,875.00 9,245.87		21,875.00	486.11 13,919.05		21,875.00 9,245.87	31,120.87
36789	FHLMC-WF 03/30/11 .515 11/26/12D	I 5,000,000.00	2,503.47 2,083.69		12,875.00 4,122.57		12,875.00	2,503.47 6,206.26		12,875.00 4,122.57	16,997.57
36790	FHLMC-UBS 03/30/11 .375 11/30/12D	I 5,000,000.00	1,614.58 4,223.81		9,375.00 8,356.80		9,375.00	1,614.58 12,580.61		9,375.00 8,356.80	17,731.80
36791	FHLMC-CALL-GILF 03/30/11 1.150 10/07/13D	I	13,416.67 1,361.71		15,333.33 -1,361.71		28,750.00		13,500.00	15,333.33 12,138.29	27,471.62
36792	FNMA-CALL-GILF 03/30/11 1.000 09/20/13D	I 10,000,000.00	28,055.56 5,651.93		50,000.00 11,182.33		50,000.00	28,055.56 16,834.26		50,000.00 11,182.33	61,182.33
36793	FHLB-UBC 03/30/11 .570 08/28/12D	I 5,000,000.00	9,500.00 8.99		14,250.00 17.80		14,250.00	9,500.00 26.79		14,250.00 17.80	14,267.80
36795	FNMA-DISC-WF 03/30/11 .220 02/01/12D	I 10,154,000.00	5,770.86		11,417.60			17,188.46		11,417.60	11,417.60
36796	FHLMC-DISC-WF 04/01/11 .280 03/13/12D	I 14,327,000.00	10,140.33		20,503.53			30,643.86		20,503.53	20,503.53
36798	FHLMC-DISC-CITIG 04/04/11 .230 03/16/12D	I 9,450,000.00	5,313.00		11,109.00			16,422.00		11,109.00	11,109.00
36799	FNMA-CALL-WF 04/05/11 .800 11/29/13D	I	3,555.56 4,713.62		16,444.44 -4,713.62		20,000.00		52,500.00	16,444.44 47,786.38	64,230.82



CITY OF SAN JOSE  
TREASURY DIVISION  
EARNED INCOME DETAIL  
7/01/11 THROUGH 12/31/11  
SORT KEYS ARE FUND  
ALL FUNDS

INV NO.	DESCRIPTION PURCH RATE MATURITY	CURRENT PERIOD ENDING PAR	PRIOR PERIOD STORED ACRL.	PRIOR PERIOD CALC. ADJUST.	SCHEDULED ACCRUALS	POSTED ACRL. ADJUSTMENTS	POSTED RECEIPTS	PERIOD END ACCRUED	GAIN/(LOSS) SALE/WRTDWN	EARNED THIS PERIOD	TOTAL/NET EARNINGS
36800	FNMA-UBC 04/05/11 .500 10/30/12D	I 10,000,000.00	8,472.22 1,849.13		25,000.00 3,910.80		25,000.00	8,472.22 5,759.93		25,000.00 3,910.80	28,910.80
36801	FNMA-CITIG 04/05/11 1.000 09/23/13D	I 5,000,000.00	13,611.11 588.36		25,000.00 1,244.34		25,000.00	13,611.11 1,832.70		25,000.00 1,244.34	26,244.34
36803	FFCB-UBC 04/06/11 .980 09/23/13D	I 5,000,000.00	13,338.88 1,159.71		24,500.01 2,481.24		24,500.00	13,338.89 3,640.95		24,500.01 2,481.24	26,981.25
36804	FNMA-WF 04/06/11 .750 02/26/13D	I 5,000,000.00	13,020.84 354.19		18,749.99 757.81		18,750.00	13,020.83 1,112.00		18,749.99 757.81	19,507.80
36805	FHLB-WF 04/08/11 1.170 11/08/13	I 5,000,000.00	8,612.50		29,250.00		29,250.00	8,612.50		29,250.00	29,250.00
36807	FHLB-CITIG 04/15/11 1.000 08/15/13	I 5,000,000.00	10,555.56		25,000.00		16,666.67	18,888.89		25,000.00	25,000.00
36809	FHLMC-CALL-UBS 04/29/11 1.625 04/29/14	I	13,993.06		6,319.44		20,312.50			6,319.44	6,319.44
36810	FHLB-GILFD 04/28/11 1.200 10/28/13	I 5,000,000.00	10,500.00		30,000.00		30,000.00	10,500.00		30,000.00	30,000.00
36815	CP-DISC-TOYOTA-TOY 04/13/11 .270 07/13/11D	I	5,787.54		879.12		6,666.66			879.12	879.12
36817	CP-DISC-BANKAMERICA-BA 04/15/11 .270 08/15/11D	I	5,080.26		2,968.99		8,049.25			2,968.99	2,968.99
36820	FNMA-DISC-CITIG 04/18/11 .110 09/09/11D	I	4,522.22		4,277.78		8,800.00			4,277.78	4,277.78
36821	FNMA-DISC-WF 04/18/11 .120 09/23/11D	I	4,933.33		5,600.00		10,533.33			5,600.00	5,600.00
36822	FHLMC-DISC-UBC 04/18/11 .140 11/18/11D	I	5,310.36		10,046.64		15,357.00			10,046.64	10,046.64
36829	FNMA-GILFD 04/29/11 1.500 09/08/14D	I 10,000,000.00	47,083.33 179.56		75,000.00 524.43		75,000.00	47,083.33 703.99		75,000.00 524.43	75,524.43

CITY OF SAN JOSE  
TREASURY DIVISION  
EARNED INCOME DETAIL  
7/01/11 THROUGH 12/31/11  
SORT KEYS ARE FUND  
ALL FUNDS

INV NO.	DESCRIPTION PURCH RATE MATURITY	CURRENT PERIOD ENDING PAR	PRIOR PERIOD STORED ACRL.	PRIOR PERIOD CALC. ADJUST.	SCHEDULED ACCRUALS	POSTED ACRL. ADJUSTMENTS	POSTED RECEIPTS	PERIOD END ACCRUED	GAIN/(LOSS) SALE/WRTDWN	EARNED THIS PERIOD	TOTAL/NET EARNINGS
36830	FHLMC-WF 04/29/11 .375 11/30/12D I	5,000,000.00	1,614.58 900.00		9,375.00 2,628.57		9,375.00	1,614.58 3,528.57		9,375.00 2,628.57	12,003.57
36831	FHLMC-CITIG 05/09/11 1.375 05/09/14 I	10,000,000.00		19,861.11	68,750.00		68,750.00	19,861.11		68,750.00	68,750.00
36834	NCD-UBOC-UBC 04/29/11 .310 10/07/11 I			10,850.00	16,877.78		27,727.78			16,877.78	16,877.78
36838	CP-DISC-UBS FIN DEL-UBS I 05/03/11 .175 08/03/11D			2,868.05	1,604.17		4,472.22			1,604.17	1,604.17
36841	CP-DISC-UBS FIN DEL-UBS I 05/04/11 .115 07/05/11D			1,090.91	75.24		1,166.15			75.24	75.24
36842	FHLB-WF 05/16/11 .750 07/30/13P I	4,500,000.00	4,218.75 -110.43		16,875.00 -441.74		16,875.00	4,218.75 -552.17		16,875.00 -441.74	16,433.26
36843	FHLB-WF 05/16/11 .750 08/28/13 I	5,000,000.00		4,687.50	18,750.00		18,750.00	4,687.50		18,750.00	18,750.00
36844	FFCB-CITIG 05/12/11 1.150 05/12/14 I	5,000,000.00		7,826.39	28,750.00		28,750.00	7,826.39		28,750.00	28,750.00
36846	FNMA-WF 05/06/11 .375 12/28/12D I	10,000,000.00	312.50 995.35		18,750.00 3,270.43		18,750.00	312.50 4,265.78		18,750.00 3,270.43	22,020.43
36847	FHLMC-UBC 05/06/11 .375 11/30/12D I	5,000,000.00	1,614.58 312.20		9,375.00 1,025.78		9,375.00	1,614.58 1,337.98		9,375.00 1,025.78	10,400.78
36848	FNMA-UBC 05/12/11 .800 11/18/13D I	5,000,000.00	4,777.78 371.88		20,000.00 1,368.51		20,000.00	4,777.78 1,740.39		20,000.00 1,368.51	21,368.51
36853	FNMA-WF 06/15/11 2.200 06/15/16 I	5,000,000.00		4,888.89	55,000.00		55,000.00	4,888.89		55,000.00	55,000.00
36854	FHLMC-GILFD 06/13/11 1.600 03/13/15 I	5,000,000.00		4,000.00	40,000.00		20,000.00	24,000.00		40,000.00	40,000.00
36858	FHLB-GILFD 06/08/11 1.770 06/08/15 I	3,000,000.00		3,392.50	26,550.00		26,550.00	3,392.50		26,550.00	26,550.00

CITY OF SAN JOSE  
TREASURY DIVISION  
EARNED INCOME DETAIL  
7/01/11 THROUGH 12/31/11  
SORT KEYS ARE FUND  
ALL FUNDS

INV NO.	DESCRIPTION PURCH RATE MATURITY	CURRENT PERIOD ENDING PAR	PRIOR PERIOD STORED ACCRL.	PRIOR PERIOD CALC. ADJUST.	SCHEDULED ACCRUALS	POSTED ACRL. ADJUSTMENTS	POSTED RECEIPTS	PERIOD END ACCRUED	GAIN/(LOSS) SALE/WRTDWN	EARNED THIS PERIOD	TOTAL/NET EARNINGS
36860	FHLB-WF 06/21/11 .500 06/21/13	I 10,000,000.00	1,388.89		25,000.00		25,000.00	1,388.89		25,000.00	25,000.00
36861	FFCB-UBC 06/20/11 .625 11/20/13	I 5,000,000.00	954.86		15,625.00		13,020.83	3,559.03		15,625.00	15,625.00
36863	FHLB-CALL-CITIG 06/27/11 .700 09/27/13	I 10,000,000.00	777.78		35,000.00		35,000.00	777.78		35,000.00	35,000.00
36864	FHLB-WF 06/30/11 1.030 10/23/14	I 10,000,000.00	286.11		51,500.01		32,330.56	19,455.56		51,500.01	51,500.01
36865	FHLB-WF 06/23/11 .700 01/30/14D	I 10,000,000.00	2,138.89 87.39		35,000.00 2,010.09		7,777.78	29,361.11 2,097.48		35,000.00 2,010.09	37,010.09
36866	FFCB-WF 06/23/11 .875 06/23/14D	I 10,000,000.00	1,944.44 54.01		43,750.00 1,242.34		43,750.00	1,944.44 1,296.35		43,750.00 1,242.34	44,992.34
36867	FHLB-GILFD 06/30/11 .850 04/30/14	I 5,000,000.00	118.06		21,250.00		14,166.67	7,201.39		21,250.00	21,250.00
36868	FFCB-UBS 06/29/11 .400 04/29/13	I 10,000,000.00	222.22		20,000.00		13,333.33	6,888.89		20,000.00	20,000.00
36869	CP-DISC-TOYOTA-TOY 06/22/11 .180 08/25/11D	I	189.95		1,160.77		1,350.72			1,160.77	1,160.77
36870	NCD-UBOC-UBC 06/23/11 .230 12/02/11	I	1,022.22		19,677.78		20,700.00			19,677.78	19,677.78
36871	FHLB-WF 06/23/11 .400 04/30/13D	I 10,000,000.00	1,555.56 22.45		20,000.00 516.40		14,777.78	6,777.78 538.85		20,000.00 516.40	20,516.40
36872	FNMA-WF 06/23/11 .500 08/09/13D	I 10,000,000.00	1,944.44 44.22		25,000.00 1,016.96		7,222.22	19,722.22 1,061.18		25,000.00 1,016.96	26,016.96
36873	CP-DISC-UBS FIN DEL-UBS 06/23/11 .070 07/25/11D	I	311.11		933.33		1,244.44			933.33	933.33
36874	CP-DISC-TOYOTA-TOY 06/23/11 .140 08/01/11D	I	155.55		602.78		758.33			602.78	602.78

CITY OF SAN JOSE  
TREASURY DIVISION  
EARNED INCOME DETAIL  
7/01/11 THROUGH 12/31/11  
SORT KEYS ARE FUND  
ALL FUNDS

INV NO.	DESCRIPTION PURCH RATE MATURITY	CURRENT PERIOD ENDING PAR	PRIOR PERIOD STORED ACRL.	PRIOR PERIOD CALC. ADJUST.	SCHEDULED ACCRUALS	POSTED ACRL. ADJUSTMENTS	POSTED RECEIPTS	PERIOD END ACCRUED	GAIN/(LOSS) SALE/WRTDWN	EARNED THIS PERIOD	TOTAL/NET EARNINGS
36875	CP-DISC-GE CAPITAL CORP I 06/23/11 .100 08/25/11D		466.67		3,208.33		3,675.00			3,208.33	3,208.33
36876	CP-DISC-GE CAPITAL CORP I 06/23/11 .100 08/29/11D		164.00		1,209.50		1,373.50			1,209.50	1,209.50
36878	FNMA-DISC-WF I 06/24/11 .100 02/01/12D	14,484,000.00	281.63		7,402.94			7,684.57		7,402.94	7,402.94
36879	FHLB-GILF I 06/30/11 1.000 10/17/14	5,100,000.00	1,983.34		25,499.99		17,000.00	10,483.33		25,499.99	25,499.99
36880	FHLB-GILFD I 06/30/11 1.000 10/17/14	4,900,000.00	1,905.55		24,500.00		16,333.33	10,072.22		24,500.00	24,500.00
36881	CP-DISC-UBS FIN DEL-UBS I 06/29/11 .090 07/29/11D		75.00		1,050.00		1,125.00			1,050.00	1,050.00
36882	FHLB-GILFD I 06/30/11 1.125 12/29/14D	4,500,000.00	281.26 5.42		25,312.49 997.75		25,312.50	281.25 1,003.17		25,312.49 997.75	26,310.24
36883	FNMA-CALL-GILFD I 07/19/11 2.125 07/19/16	5,000,000.00			47,812.50			47,812.50		47,812.50	47,812.50
36884	FNMA-CALL-GILFD I 07/19/11 2.125 07/19/16	5,000,000.00			47,812.50			47,812.50		47,812.50	47,812.50
36885	FNMA-GILFD I 07/13/11 .500 08/09/13D	5,000,000.00	1,805.56		11,666.66 941.69		3,611.11	9,861.11 941.69		11,666.66 941.69	12,608.35
36886	CP-DISC-TOYOTA-TOY I 07/13/11 .150 08/25/11D				895.83		895.83			895.83	895.83
36887	FHLB-DISC-CITIG I 07/25/11 .170 06/01/12D	20,000,000.00			15,111.11			15,111.11		15,111.11	15,111.11
36888	FHLB-DISC-WF I 07/29/11 .120 08/31/11D				3,124.33		3,124.33			3,124.33	3,124.33
36889	CP-DISC-TOYOTA-TOY I 08/02/11 .200 09/12/11D				1,359.15		1,359.15			1,359.15	1,359.15

CITY OF SAN JOSE  
TREASURY DIVISION  
EARNED INCOME DETAIL  
7/01/11 THROUGH 12/31/11  
SORT KEYS ARE FUND  
ALL FUNDS

INV NO.	DESCRIPTION PURCH RATE MATURITY	CURRENT PERIOD ENDING PAR	PRIOR PERIOD STORED ACCRL.	PRIOR PERIOD CALC. ADJUST.	SCHEDULED ACCRUALS	POSTED ACRL. ADJUSTMENTS	POSTED RECEIPTS	PERIOD END ACCRUED	GAIN/(LOSS) SALE/WRTDWN	EARNED THIS PERIOD	TOTAL/NET EARNINGS
36890	CP-DISC-TOYOTA-TOY 08/03/11 .210 10/12/11D	I			2,450.00		2,450.00			2,450.00	2,450.00
36891	FHLMC-DISC-WF 08/03/11 .150 02/24/12D	I	5,795,000.00		3,646.02			3,646.02		3,646.02	3,646.02
36892	FNMA-CALL-GILFD 09/12/11 .625 09/12/14	I	5,000,000.00		9,461.81			9,461.81		9,461.81	9,461.81
36893	FNMA-CALL-WF 09/12/11 .750 09/12/14	I	5,000,000.00		11,354.17			11,354.17		11,354.17	11,354.17
36894	FNMA-CALL-WF 09/12/11 .800 03/12/15D	I	5,000,000.00		12,111.11 543.27			12,111.11 543.27		12,111.11 543.27	12,654.38
36895	CP-DISC-UBS FIN DEL-UBS 08/25/11 .140 09/15/11D	I			816.67		816.67			816.67	816.67
36896	FHLMC-WF 08/26/11 .500 09/19/14D	I	10,000,000.00	1,944.44	17,361.12 3,474.29		5,138.89	14,166.67 3,474.29		17,361.12 3,474.29	20,835.41
36897	CP-DISC-TOYOTA-TOY 08/30/11 .290 12/16/11D	I			8,707.83		8,707.83			8,707.83	8,707.83
36898	FNMA-CALL-UBS 09/19/11 .500 09/19/13	I	10,000,000.00		14,166.67			14,166.67		14,166.67	14,166.67
36899	CP-DISC-UBS FIN DEL-UBS 09/01/11 .150 10/03/11D	I			800.00		800.00			800.00	800.00
36900	CP-DISC-TOYOTA-TOY 09/01/11 .200 10/24/11D	I			1,767.26		1,767.26			1,767.26	1,767.26
36901	FHLB-WF 09/02/11 .125 08/15/12D	I	10,000,000.00	590.28	4,131.94 2,607.76			4,722.22 2,607.76		4,131.94 2,607.76	6,739.70
36902	FHLB-WF 09/07/11 .150 06/07/12D	I	5,000,000.00		2,375.00 359.85			2,375.00 359.85		2,375.00 359.85	2,734.85
36903	FHLB-WF 09/02/11 .140 06/18/12D	I	5,000,000.00	272.22	2,313.89 375.52			2,586.11 375.52		2,313.89 375.52	2,689.41

CITY OF SAN JOSE  
TREASURY DIVISION  
EARNED INCOME DETAIL  
7/01/11 THROUGH 12/31/11  
SORT KEYS ARE FUND  
ALL FUNDS

INV NO.	DESCRIPTION PURCH RATE MATURITY	CURRENT PERIOD ENDING PAR	PRIOR PERIOD STORED ACRL.	PRIOR PERIOD CALC. ADJUST.	SCHEDULED ACCRUALS	POSTED ACRL. ADJUSTMENTS	POSTED RECEIPTS	PERIOD END ACCRUED	GAIN/(LOSS) SALE/WRTDWN	EARNED THIS PERIOD	TOTAL/NET EARNINGS
36904	FNMA-CALL-WF 09/19/11 .700 09/19/14	I 5,000,000.00			9,916.67			9,916.67		9,916.67	9,916.67
36905	FNMA-DISC-CITIG 09/09/11 .150 07/02/12D	I 9,512,000.00			4,518.20			4,518.20		4,518.20	4,518.20
36906	FFCB-GILFD 09/23/11 .250 08/19/13D	I 10,000,000.00	2,361.11		6,805.56 2,729.89			9,166.67 2,729.89		6,805.56 2,729.89	9,535.45
36907	FHLMC-CITIG 09/23/11 .375 10/30/13P	I 5,000,000.00		208.33	5,104.17 -149.74		2,135.42	3,177.08 -149.74		5,104.17 -149.74	4,954.43
36909	FFCB-GILFD 09/23/11 .350 09/23/13D	I 5,000,000.00			4,763.89 410.40			4,763.89 410.40		4,763.89 410.40	5,174.29
36910	FFCB-UBC 09/29/11 .530 09/29/14	I 5,000,000.00			6,772.22			6,772.22		6,772.22	6,772.22
36911	FFCB-UBS 09/23/11 .350 09/23/13D	I 5,000,000.00			4,763.89 410.40			4,763.89 410.40		4,763.89 410.40	5,174.29
36912	FNMA-DISC-UBS 09/23/11 .130 07/02/12D	I 5,010,000.00			1,809.17			1,809.17		1,809.17	1,809.17
36914	FHLMC-WF 09/28/11 .375 10/30/13D	I 5,000,000.00		468.75	4,843.75 585.19		2,135.42	3,177.08 585.19		4,843.75 585.19	5,428.94
36915	FHLMC-GILFD 09/28/11 .500 09/19/14D	I 5,000,000.00		625.00	6,458.33 1,992.64			7,083.33 1,992.64		6,458.33 1,992.64	8,450.97
36916	FHLB-UBC 09/28/11 .300 03/19/13D	I 5,000,000.00		375.00	3,875.00 503.25			4,250.00 503.25		3,875.00 503.25	4,378.25
36917	CP-DISC-TOYOTA-TOY 09/28/11 .120 11/07/11D	I			720.00		720.00			720.00	720.00
36918	FNMA-GILFD 10/04/11 .625 10/30/14D	I 5,000,000.00		607.64	7,552.08 301.43		2,864.58	5,295.14 301.43		7,552.08 301.43	7,853.51
36919	FHLB-DISC-CITIG 10/07/11 .120 07/02/12D	I 14,163,000.00			4,060.06			4,060.06		4,060.06	4,060.06

CITY OF SAN JOSE  
TREASURY DIVISION  
EARNED INCOME DETAIL  
7/01/11 THROUGH 12/31/11  
SORT KEYS ARE FUND  
ALL FUNDS

INV NO.	DESCRIPTION PURCH RATE MATURITY	CURRENT PERIOD ENDING PAR	PRIOR PERIOD STORED ACRL.	PRIOR PERIOD CALC. ADJUST.	SCHEDULED ACCRUALS	POSTED ACRL. ADJUSTMENTS	POSTED RECEIPTS	PERIOD END ACCRUED	GAIN/(LOSS) SALE/WRTDWN	EARNED THIS PERIOD	TOTAL/NET EARNINGS
36920	FHLMC-WF 10/11/11 .750 11/25/14D	I 10,000,000.00	1,041.67		16,666.66 222.79		10,208.33	7,500.00 222.79		16,666.66 222.79	16,889.45
36921	NCD-UBOC-UBC 10/11/11 .270 02/01/12	I 10,000,000.00			6,150.00			6,150.00		6,150.00	6,150.00
36923	FHLMC-GILFD 10/18/11 .500 10/18/13D	I 5,000,000.00			5,069.44 538.65			5,069.44 538.65		5,069.44 538.65	5,608.09
36924	FNMA-GILFD 10/28/11 1.500 10/28/16	I 5,000,000.00			13,125.00			13,125.00		13,125.00	13,125.00
36925	FNMA-DISC-UBS 10/12/11 .100 07/02/12D	I 10,000,000.00			2,250.00			2,250.00		2,250.00	2,250.00
36926	FHLB-UBS 10/14/11 .375 11/27/13D	I 5,000,000.00			4,010.41 1,131.48		2,239.58	1,770.83 1,131.48		4,010.41 1,131.48	5,141.89
36927	FNMA-DISC-CITIG 10/20/11 .120 07/02/12D	I 9,225,000.00			2,244.75			2,244.75		2,244.75	2,244.75
36928	CP-DISC-TOYOTA-TOY 10/21/11 .260 02/01/12D	I 6,243,000.00			3,246.36			3,246.36		3,246.36	3,246.36
36929	CP-DISC-HSBC FIN CORP-J 10/31/11 .390 02/01/12D	I 8,227,000.00			5,525.80			5,525.80		5,525.80	5,525.80
36930	FHLMC-CALL-WF 11/25/11 1.000 11/25/15	I 5,000,000.00			5,000.00			5,000.00		5,000.00	5,000.00
36931	CP-DISC-UBS FIN DEL-UBS 11/15/11 .070 11/21/11D	I			186.67		186.67			186.67	186.67
36932	CP-DISC-UBS FIN DEL-UBS 11/18/11 .300 01/18/12D	I 6,572,000.00			2,409.74			2,409.74		2,409.74	2,409.74
36934	FHLMC-WF 11/21/11 .375 10/30/13D	I 5,000,000.00	1,093.75		2,083.33 977.29			3,177.08 977.29		2,083.33 977.29	3,060.62
36935	FNMA-UBS 11/21/11 .625 10/30/14D	I 5,000,000.00	1,822.92		3,472.22 610.80			5,295.14 610.80		3,472.22 610.80	4,083.02

CITY OF SAN JOSE  
TREASURY DIVISION  
EARNED INCOME DETAIL  
7/01/11 THROUGH 12/31/11  
SORT KEYS ARE FUND  
ALL FUNDS

INV NO.	DESCRIPTION PURCH RATE MATURITY	CURRENT PERIOD ENDING PAR	PRIOR PERIOD STORED ACRL.	PRIOR PERIOD CALC. ADJUST.	SCHEDULED ACCRUALS	POSTED ACRL. ADJUSTMENTS	POSTED RECEIPTS	PERIOD END ACCRUED	GAIN/(LOSS) SALE/WRTDWN	EARNED THIS PERIOD	TOTAL/NET EARNINGS
36936	FHLB-UBC 11/30/11 .330 07/01/13D	I 10,000,000.00			2,841.67 182.38			2,841.67 182.38		2,841.67 182.38	3,024.05
36937	FHLMC-CALL-UBC 11/23/11 .875 11/14/14D	I 5,000,000.00	1,093.75		4,618.06 46.64			5,711.81 46.64		4,618.06 46.64	4,664.70
36938	FFCB-WF 11/29/11 .375 09/06/13D	I 10,000,000.00	8,645.83		3,333.33 316.23			11,979.16 316.23		3,333.33 316.23	3,649.56
36939	FHLB-WF 11/29/11 .300 05/16/13D	I 5,000,000.00	541.67		1,333.33 92.70			1,875.00 92.70		1,333.33 92.70	1,426.03
36941	FNMA-UBC 11/29/11 .750 12/19/14	I 5,000,000.00	1,250.00		3,333.34		3,333.34	1,250.00		3,333.34	3,333.34
36942	FHLB-UBC 11/30/11 .350 05/30/13	I 5,000,000.00			1,506.94			1,506.94		1,506.94	1,506.94
36943	FHLMC-CALL-GILFD 12/16/11 1.000 06/16/15D	I 5,000,000.00			2,083.33 43.19			2,083.33 43.19		2,083.33 43.19	2,126.52
36944	FHLMC-CALL-GILFD 12/19/11 1.500 12/19/16	I 5,000,000.00			2,500.00			2,500.00		2,500.00	2,500.00
36945	FHLB-CALL-CITIG 11/29/11 .350 08/10/12	I 6,000,000.00	1,808.33		1,866.67			3,675.00		1,866.67	1,866.67
36947	CP-DISC-HSBC FIN CORP-J 12/08/11 .120 12/30/11D	I			447.33		447.33			447.33	447.33
36948	NCD-UBOC-UBC 12/09/11 .250 02/01/12	I 15,000,000.00			2,395.83			2,395.83		2,395.83	2,395.83
36949	CP-DISC-HSBC FIN CORP-P 12/09/11 .360 02/22/12D	I 12,855,000.00			2,956.65			2,956.65		2,956.65	2,956.65
36950	CP-DISC-HSBC FIN CORP-J 12/14/11 .280 02/01/12D	I 11,926,000.00			1,669.64			1,669.64		1,669.64	1,669.64
36951	FHLMC-CALL-UBS 12/30/11 1.000 09/30/15	I 5,000,000.00			138.89			138.89		138.89	138.89



CITY OF SAN JOSE  
TREASURY DIVISION  
EARNED INCOME DETAIL  
7/01/11 THROUGH 12/31/11  
SORT KEYS ARE FUND  
ALL FUNDS

INV NO.	DESCRIPTION PURCH RATE MATURITY	CURRENT PERIOD ENDING PAR	PRIOR PERIOD STORED ACCRL.	PRIOR PERIOD CALC. ADJUST.	SCHEDULED ACCRUALS	POSTED ACCRL. ADJUSTMENTS	POSTED RECEIPTS	PERIOD END ACCRUED	GAIN/(LOSS) SALE/WRTDWN	EARNED THIS PERIOD	TOTAL/NET EARNINGS
36952	FHLMC-CALL-GILFD 12/27/11 .650 06/27/14D	I 5,000,000.00			361.11 4.11			361.11 4.11		361.11 4.11	365.22
36953	FNMA-CALL-WF 12/19/11 .750 12/19/14	I 10,000,000.00			2,500.00			2,500.00		2,500.00	2,500.00
36954	NCD-UBOC-UBC 12/16/11 .250 02/01/12	I 15,000,000.00			1,666.67			1,666.67		1,666.67	1,666.67
36955	FHLMC-GILFD 12/16/11 .625 12/29/14D	I 5,000,000.00			1,302.08 133.45			1,302.08 133.45		1,302.08 133.45	1,435.53
SUBTOTAL (Fund) 1 INVESTMENT FUNDS											
	PAR VALUE	914,636,000.00									
	SOLD MATURED/OUTSTANDING				85,100.49 2,673,808.74		176,271.88 2,437,737.62		82,482.90		
	INTEREST		725,689.08	.00	2,758,909.23	.00	2,614,009.50	870,588.81		2,758,909.23	3,226,972.87
							LESS CURRENT PERIOD ADJUSTMENTS			.00	
							LESS PRIOR PERIOD ADJUSTMENTS			.00	
										----- 2,758,909.23	
	PRIOR PERIOD ACCRUED		635,794.98				639,554.89	-3,759.91			
	PRIOR PERIOD PURCHASED		63,337.85				63,337.85	.00			
	PURCHASED THIS PERIOD		26,556.25				7,326.39	19,229.86			
	ACCRUED THIS PERIOD		.00				1,903,790.37	855,118.86			
	PREMIUM DISCOUNT		-62,772.46 971,392.02				.00 920,637.78	-120,161.04 493,723.56	.00 .00	-57,388.58 442,969.32	
	GAIN/LOSS								82,482.90		

CITY OF SAN JOSE  
TREASURY DIVISION  
EARNED INCOME DETAIL  
7/01/11 THROUGH 12/31/11  
SORT KEYS ARE FUND  
ALL FUNDS

INV NO.	DESCRIPTION PURCH RATE MATURITY	CURRENT PERIOD ENDING PAR	PRIOR PERIOD STORED ACCRL.	PRIOR PERIOD CALC. ADJUST.	SCHEDULED ACCRUALS	POSTED ACCL. ADJUSTMENTS	POSTED RECEIPTS	PERIOD END ACCRUED	GAIN/(LOSS) SALE/WRTDWN	EARNED THIS PERIOD	TOTAL/NET EARNINGS
36696	FHLB-DISC-CITIG 01/05/11 .300 01/05/12D	I 854,000.00	1,259.65		1,309.46			2,569.11		1,309.46	1,309.46
SUBTOTAL (Fund) 34 CSJ/CSC Jt Pwr											
	PAR VALUE	854,000.00									
	SOLD				.00		.00		.00		
	MATURED/OUTSTANDING				.00		.00				
	INTEREST		.00	.00	.00	.00	.00	.00		.00	1,309.46
					LESS CURRENT PERIOD ADJUSTMENTS					.00	
					LESS PRIOR PERIOD ADJUSTMENTS					.00	
										-----	.00
	PRIOR PERIOD ACCRUED		.00				.00	.00			
	PRIOR PERIOD PURCHASED		.00				.00	.00			
	PURCHASED THIS PERIOD		.00				.00	.00			
	ACCRUED THIS PERIOD		.00				.00	.00			
	PREMIUM		.00				.00	.00	.00	.00	
	DISCOUNT		1,259.65				.00	2,569.11	.00	1,309.46	
	GAIN/LOSS								.00		

CITY OF SAN JOSE  
 TREASURY DIVISION  
 EARNED INCOME DETAIL  
 7/01/11 THROUGH 12/31/11  
 SORT KEYS ARE FUND  
 ALL FUNDS

INV NO.	DESCRIPTION PURCH RATE MATURITY	CURRENT PERIOD ENDING PAR	PRIOR PERIOD STORED ACCRL.	PRIOR PERIOD CALC. ADJUST.	SCHEDULED ACCRUALS	POSTED ACCRL. ADJUSTMENTS	POSTED RECEIPTS	PERIOD END ACCRUED	GAIN/(LOSS) SALE/WRTDWN	EARNED THIS PERIOD	TOTAL/NET EARNINGS
35894	Series 2008 B-RDA Tax A I 11/14/08 .381 06/30/12	12,677,034.24			24,307.57		24,307.61			24,307.61	24,307.81
SUBTOTAL (Fund) 55 Series 2008B-RDA Tax Allocation											
	PAR VALUE	12,677,034.24									
	SOLD MATURED/OUTSTANDING				.00 24,307.57	.00	.00 24,307.61		.00		
	INTEREST		.00	.00	24,307.57	.00	24,307.61	.00		24,307.61	24,307.81
						LESS CURRENT PERIOD ADJUSTMENTS				.00	
						LESS PRIOR PERIOD ADJUSTMENTS				.00	
										----- 24,307.61	
	PRIOR PERIOD ACCRUED		- .02			.04		- .06			
	PRIOR PERIOD PURCHASED		.00			.00		.00			
	PURCHASED THIS PERIOD		.00			.00		.00			
	ACCRUED THIS PERIOD		.00			24,307.57		.00			
	PREMIUM		.00			.00		.00	.00	.00	
	DISCOUNT		.00			.00		.00	.00	.00	
	GAIN/LOSS								.00	.00	

CITY OF SAN JOSE  
TREASURY DIVISION  
EARNED INCOME DETAIL  
7/01/11 THROUGH 12/31/11  
SORT KEYS ARE FUND  
ALL FUNDS

INV NO.	DESCRIPTION PURCH RATE MATURITY	CURRENT PERIOD ENDING PAR	PRIOR PERIOD STORED ACCL.	PRIOR PERIOD CALC. ADJUST.	SCHEDULED ACCRUALS	POSTED ACCL. ADJUSTMENTS	POSTED RECEIPTS	PERIOD END ACCRUED	GAIN/(LOSS) SALE/WRTDWN	EARNED THIS PERIOD	TOTAL/NET EARNINGS
GRAND TOTAL											
	PAR VALUE	928,167,034.24									
	SOLD				85,100.49		176,271.88		82,482.90		
	MATURED/OUTSTANDING				2,698,116.31		2,462,045.23				
	INTEREST		725,689.08	.00	2,783,216.80	.00	2,638,317.11	870,588.81		2,783,216.84	3,252,590.14
	CAPITALIZED INTEREST		.00	.00	.00	.00	.00	.00		.00	
	NET INTEREST AND RECEIPTS		725,689.08	.00	2,783,216.80	.00	2,638,317.11	870,588.81		2,783,216.84	
						LESS CURRENT PERIOD ADJUSTMENTS				.00	
						LESS PRIOR PERIOD ADJUSTMENTS				.00	
										2,783,216.84	
	PRIOR PERIOD ACCRUED		635,794.96				639,554.93	-3,759.97			
	PRIOR PERIOD PURCHASED		63,337.85				63,337.85	.00			
	PURCHASED THIS PERIOD		26,556.25				7,326.39	19,229.86			
	ACCRUED THIS PERIOD		.00				1,928,097.94	855,118.86			
	PREMIUM		-62,772.46				.00	-120,161.04	.00	-57,388.58	
	DISCOUNT		972,651.67				920,637.78	496,292.67	.00	444,278.78	
	GAIN/LOSS								82,482.90		



## **SECTION C**

### **TIME DEPOSIT BANK DISTRIBUTION REPORT**

The Time Deposit Bank Distribution Report lists each bank with which time deposit investments are outstanding as of the specified report date. For each bank listed, the bank code, bank name, total time deposit dollar amount, and percentage of all time deposits are displayed.



**CITY OF SAN JOSE: TIME DEPOSIT BANK DISTRIBUTION  
AS OF DECEMBER 31, 2011**

**There were no time deposits outstanding as of December 31, 2011.**





## **SECTION D**

### **MARKET VALUE OF PORTFOLIO**

The Securities Inventory at Market Value is an inventory of each security investment outstanding as of a certain date, along with its current market value and accrued interest.



# Inventory by Market Value



Run Date: 1/19/2012 2:14:25 PM

Investments Outstanding As Of Date: 12/31/2011

Inv. No.	Description	CUSIP	Purchase Maturity	Coupon YTM TR	Current Par /Share Current Book	Market Value Market Price	Curr Accr Int Price Source	Unrealized Gain Unrealized Loss
<b>Fund: 1 INVESTMENT FUNDS</b>								
36665	FHLB-GILFD	313371PM2	12/13/2010	.500000	10,000,000.00	10,021,875.00	694.44	127,975.00
			06/26/2013	.924000	9,893,900.00	100.218750	SUNGARD	0.00
36737	FHLB-WF	313372PA6	02/16/2011	1.000000	5,000,000.00	5,045,312.50	6,250.00	45,312.50
			05/16/2013	1.000000	5,000,000.00	100.906250	SUNGARD	0.00
36771	FHLB-WF	313372WV2	03/15/2011	.250000	5,000,000.00	5,001,562.50	3,958.33	1,612.50
			03/07/2012	.251000	4,999,950.00	100.031250	SUNGARD	0.00
36788	FHLB-WF	313371UC8	03/30/2011	.875000	5,000,000.00	5,043,750.00	486.11	94,150.00
			12/27/2013	1.250000	4,949,600.00	100.875000	SUNGARD	0.00
36793	FHLB-UBC	313372UV4	03/30/2011	.570000	5,000,000.00	5,010,937.50	9,500.00	10,987.50
			08/28/2012	.571000	4,999,950.00	100.218750	SUNGARD	0.00
36805	FHLB-WF	313373BK7	04/08/2011	1.170000	5,000,000.00	5,068,750.00	8,612.50	68,750.00
			11/08/2013	1.170000	5,000,000.00	101.375000	SUNGARD	0.00
36807	FHLB-CITIG	313373F98	04/15/2011	1.000000	5,000,000.00	5,050,000.00	18,888.89	50,000.00
			08/15/2013	1.000000	5,000,000.00	101.000000	SUNGARD	0.00
36810	FHLB-GILFD	313373HA3	04/28/2011	1.200000	5,000,000.00	5,070,312.50	10,500.00	70,312.50
			10/28/2013	1.200000	5,000,000.00	101.406250	SUNGARD	0.00
36842	FHLB-WF	313373RG9	05/16/2011	.750000	4,500,000.00	4,526,718.75	4,218.75	24,783.75
			07/30/2013	.730000	4,501,935.00	100.593750	SUNGARD	0.00
36843	FHLB-WF	313373S37	05/16/2011	.750000	5,000,000.00	5,029,687.50	4,687.50	29,687.50
			08/28/2013	.750000	5,000,000.00	100.593750	SUNGARD	0.00
36858	FHLB-GILFD	313373ZV7	06/08/2011	1.770000	3,000,000.00	3,013,125.00	3,392.50	13,125.00
			06/08/2015	1.770000	3,000,000.00	100.437500	SUNGARD	0.00
36860	FHLB-WF	3133745V8	06/21/2011	.500000	10,000,000.00	10,021,875.00	1,388.89	21,875.00
			06/21/2013	.500000	10,000,000.00	100.218750	SUNGARD	0.00
36863	FHLB-CALL-CITIG	3133747F1	06/27/2011	.700000	10,000,000.00	10,012,500.00	777.78	12,500.00
			09/27/2013	.700000	10,000,000.00	100.125000	SUNGARD	0.00
36864	FHLB-WF	313374GK0	06/30/2011	1.030000	10,000,000.00	10,112,500.00	19,455.56	112,500.00
			10/23/2014	1.030000	10,000,000.00	101.125000	SUNGARD	0.00
36865	FHLB-WF	313374B41	06/23/2011	.700000	10,000,000.00	10,046,875.00	29,361.11	57,275.00
			01/30/2014	.740000	9,989,600.00	100.468750	SUNGARD	0.00
36867	FHLB-GILFD	313374H37	06/30/2011	.850000	5,000,000.00	5,037,500.00	7,201.39	37,500.00
			04/30/2014	.850000	5,000,000.00	100.750000	SUNGARD	0.00
36871	FHLB-WF	313374CR9	06/23/2011	.400000	10,000,000.00	10,009,375.00	6,777.78	11,275.00
			04/30/2013	.410000	9,998,100.00	100.093750	SUNGARD	0.00

# Inventory by Market Value



Run Date: 1/19/2012 2:14:25 PM

Investments Outstanding As Of Date: 12/31/2011

Inv. No.	Description	CUSIP	Purchase Maturity	Coupon YTM TR	Current Par /Share	Market Value	Curr Accr Int	Unrealized Gain
					Current Book	Market Price	Price Source	Unrealized Loss
36879	FHLB-GILF	313374CH1	06/30/2011	1.000000	5,100,000.00	5,154,187.50	10,483.33	54,187.50
			10/17/2014	1.000000	5,100,000.00	101.062500	SUNGARD	0.00
36880	FHLB-GILFD	313374CH1	06/30/2011	1.000000	4,900,000.00	4,952,062.50	10,072.22	52,062.50
			10/17/2014	1.000000	4,900,000.00	101.062500	SUNGARD	0.00
36882	FHLB-GILFD	313374GA2	06/30/2011	1.125000	4,500,000.00	4,563,281.25	281.25	70,211.25
			12/29/2014	1.170000	4,493,070.00	101.406250	SUNGARD	0.00
36901	FHLB-WF	313375CY1	09/02/2011	.125000	10,000,000.00	9,993,750.00	4,722.22	1,250.00
			08/15/2012	.204000	9,993,090.28	99.937500	SUNGARD	0.00
36902	FHLB-WF	313375KR7	09/07/2011	.150000	5,000,000.00	5,000,000.00	2,375.00	850.00
			06/07/2012	.173000	4,999,150.00	100.000000	SUNGARD	0.00
36903	FHLB-WF	313375C96	09/02/2011	.140000	5,000,000.00	5,000,000.00	2,586.11	900.00
			06/18/2012	.163000	4,999,372.22	100.000000	SUNGARD	0.00
36916	FHLB-UBC	313375NC7	09/28/2011	.300000	5,000,000.00	5,000,000.00	4,250.00	2,850.00
			03/19/2013	.339000	4,997,525.00	100.000000	SUNGARD	0.00
36926	FHLB-UBS	3133762C8	10/14/2011	.375000	5,000,000.00	4,993,750.00	1,770.83	4,850.00
			11/27/2013	.480000	4,988,900.00	99.875000	SUNGARD	0.00
36936	FHLB-UBC	313376GY5	11/30/2011	.330000	10,000,000.00	9,993,750.00	2,841.67	0.00
			07/01/2013	.351000	9,996,700.00	99.937500	SUNGARD	-2,950.00
36939	FHLB-WF	313376D36	11/29/2011	.300000	5,000,000.00	4,996,875.00	1,875.00	0.00
			05/16/2013	.321000	4,999,041.67	99.937500	SUNGARD	-1,625.00
36942	FHLB-UBC	313376GT6	11/30/2011	.350000	5,000,000.00	5,000,000.00	1,506.94	0.00
			05/30/2013	.350000	5,000,000.00	100.000000	SUNGARD	0.00
36945	FHLB-CALL-CITIG	313374SU5	11/29/2011	.350000	6,000,000.00	6,000,000.00	3,675.00	0.00
			08/10/2012	.350000	6,001,808.33	100.000000	SUNGARD	0.00
Inv Type: 22 FEDERAL HOME LOAN BANKS				.628983	183,000,000.00	183,770,312.50	182,591.10	976,782.50
				.676717	182,801,692.50	100.420936		-4,575.00
36720	FNMA-WF	31398A5W8	01/27/2011	.750000	5,000,000.00	5,018,750.00	1,354.17	72,700.00
			12/18/2013	1.130000	4,946,050.00	100.375000	SUNGARD	0.00
36730	FNMA-WF	31398A5W8	02/04/2011	.750000	5,000,000.00	5,018,750.00	1,354.17	96,050.00
			12/18/2013	1.300000	4,922,700.00	100.375000	SUNGARD	0.00
36740	FNMA-WF	31398A2M3	02/10/2011	1.125000	5,000,000.00	5,064,062.50	14,218.75	91,862.50
			09/30/2013	1.340000	4,972,200.00	101.281250	SUNGARD	0.00
36760	FNMA-CITIG	31398A2S0	03/07/2011	1.000000	5,000,000.00	5,051,562.50	13,611.11	69,662.50
			09/23/2013	1.145000	4,981,900.00	101.031250	SUNGARD	0.00
36763	FNMA-GILFD	31398A2M3	03/08/2011	1.125000	5,000,000.00	5,064,062.50	14,218.75	65,962.50

# Inventory by Market Value



Run Date: 1/19/2012 2:14:25 PM

Investments Outstanding As Of Date: 12/31/2011

Inv. No.	Description	CUSIP	Purchase Maturity	Coupon YTM TR	Current Par /Share Current Book	Market Value Market Price	Curr Accr Int Price Source	Unrealized Gain Unrealized Loss
			09/30/2013	1.140000	4,998,100.00	101.281250	SUNGARD	0.00
36777	FNMA-CALL-GILF	31398A6D9	03/18/2011	.800000	5,000,000.00	5,028,125.00	4,777.78	64,075.00
			11/18/2013	1.074000	4,964,050.00	100.562500	SUNGARD	0.00
36792	FNMA-CALL-GILF	3136FPGA9	03/30/2011	1.000000	10,000,000.00	10,003,125.00	28,055.56	58,125.00
			09/20/2013	1.227000	9,945,000.00	100.031250	SUNGARD	0.00
36800	FNMA-UBC	3136FPUC9	04/05/2011	.500000	10,000,000.00	10,015,625.00	8,472.22	27,825.00
			10/30/2012	.578000	9,987,800.00	100.156250	SUNGARD	0.00
36801	FNMA-CITIG	31398A2S0	04/05/2011	1.000000	5,000,000.00	5,051,562.50	13,611.11	57,662.50
			09/23/2013	1.050000	4,993,900.00	101.031250	SUNGARD	0.00
36804	FNMA-WF	3135G0AK9	04/06/2011	.750000	5,000,000.00	5,028,125.00	13,020.83	30,975.00
			02/26/2013	.780000	4,997,150.00	100.562500	SUNGARD	0.00
36829	FNMA-GILFD	31398A3G5	04/29/2011	1.500000	10,000,000.00	10,200,000.00	47,083.33	203,500.00
			09/08/2014	1.511000	9,996,500.00	102.000000	SUNGARD	0.00
36846	FNMA-WF	31398A6F4	05/06/2011	.375000	10,000,000.00	10,021,875.00	312.50	32,575.00
			12/28/2012	.440000	9,989,300.00	100.218750	SUNGARD	0.00
36848	FNMA-UBC	31398A6D9	05/12/2011	.800000	5,000,000.00	5,028,125.00	4,777.78	34,975.00
			11/18/2013	.855000	4,993,150.00	100.562500	SUNGARD	0.00
36853	FNMA-WF	3136FRPX5	06/15/2011	2.200000	5,000,000.00	5,039,062.50	4,888.89	39,062.50
			06/15/2016	2.200000	5,000,000.00	100.781250	SUNGARD	0.00
36872	FNMA-WF	3135G0BR3	06/23/2011	.500000	10,000,000.00	10,025,000.00	19,722.22	29,300.00
			08/09/2013	.520000	9,995,700.00	100.250000	SUNGARD	0.00
36883	FNMA-CALL-GILFD	3136FRA37	07/19/2011	2.125000	5,000,000.00	5,101,562.50	47,812.50	101,562.50
			07/19/2016	2.125000	5,000,000.00	102.031250	SUNGARD	0.00
36884	FNMA-CALL-GILFD	3136FRA37	07/19/2011	2.125000	5,000,000.00	5,101,562.50	47,812.50	101,562.50
			07/19/2016	2.125000	5,000,000.00	102.031250	SUNGARD	0.00
36885	FNMA-GILFD	3135G0BR3	07/13/2011	.500000	5,000,000.00	5,012,500.00	9,861.11	16,650.00
			08/09/2013	.540000	4,995,850.00	100.250000	SUNGARD	0.00
36892	FNMA-CALL-GILFD	3135G0CU5	09/12/2011	.625000	5,000,000.00	4,995,312.50	9,461.81	0.00
			09/12/2014	.625000	5,000,000.00	99.906250	SUNGARD	-4,687.50
36893	FNMA-CALL-WF	3135G0DA8	09/12/2011	.750000	5,000,000.00	5,010,937.50	11,354.17	10,937.50
			09/12/2014	.750000	5,000,000.00	100.218750	SUNGARD	0.00
36894	FNMA-CALL-WF	3135G0CT8	09/12/2011	.800000	5,000,000.00	5,009,375.00	12,111.11	15,625.00
			03/12/2015	.836000	4,993,750.00	100.187500	SUNGARD	0.00
36898	FNMA-CALL-UBS	3135G0DE0	09/19/2011	.500000	10,000,000.00	9,993,750.00	14,166.67	0.00
			09/19/2013	.500000	10,000,000.00	99.937500	SUNGARD	-6,250.00
36904	FNMA-CALL-WF	3135G0DF7	09/19/2011	.700000	5,000,000.00	4,990,625.00	9,916.67	0.00

# Inventory by Market Value



Run Date: 1/19/2012 2:14:25 PM

Investments Outstanding As Of Date: 12/31/2011

Inv. No.	Description	CUSIP	Purchase Maturity	Coupon YTM TR	Current Par /Share Current Book	Market Value Market Price	Curr Accr Int Price Source	Unrealized Gain Unrealized Loss
			09/19/2014	.700000	5,000,000.00	99.812500	SUNGARD	-9,375.00
36918	FNMA-GILFD	3135G0DW0	10/04/2011	.625000	5,000,000.00	4,990,625.00	5,295.14	0.00
			10/30/2014	.650000	4,996,200.00	99.812500	SUNGARD	-5,575.00
36924	FNMA-GILFD	3136FTEK1	10/28/2011	1.500000	5,000,000.00	5,004,687.50	13,125.00	4,687.50
			10/28/2016	1.500000	5,000,000.00	100.093750	SUNGARD	0.00
36935	FNMA-UBS	3135G0DW0	11/21/2011	.625000	5,000,000.00	4,990,625.00	5,295.14	6,625.00
			10/30/2014	.735000	4,985,822.92	99.812500	SUNGARD	0.00
36941	FNMA-UBC	3135G0FY4	11/29/2011	.750000	5,000,000.00	5,015,625.00	1,250.00	15,625.00
			12/19/2014	.750000	5,000,000.00	100.312500	SUNGARD	0.00
36953	FNMA-CALL-WF	3135G0GP2	12/19/2011	.750000	10,000,000.00	9,987,500.00	2,500.00	0.00
			12/19/2014	.750000	10,000,000.00	99.875000	SUNGARD	-12,500.00
Inv Type: 23 FEDERAL NAT MORTGAGE ASSOC				.905165	175,000,000.00	175,862,500.00	379,440.99	1,247,587.50
				.982669	174,655,122.92	100.492857		-38,387.50
36686	FFCB-WF	31331JY56	12/23/2010	.400000	10,000,000.00	10,012,500.00	6,555.56	69,700.00
			11/02/2012	.710000	9,942,800.00	100.125000	SUNGARD	0.00
36727	FFCB-WF	31331JZ25	02/03/2011	.920000	5,000,000.00	5,045,312.50	4,472.22	78,462.50
			11/26/2013	1.160000	4,966,850.00	100.906250	SUNGARD	0.00
36736	FFCB-WF	31331JY64	02/09/2011	.700000	10,000,000.00	10,053,125.00	11,083.33	232,525.00
			11/04/2013	1.370000	9,820,600.00	100.531250	SUNGARD	0.00
36739	FFCB-WF	31331J6A6	02/10/2011	1.300000	10,000,000.00	10,171,875.00	2,888.89	216,775.00
			12/23/2013	1.460000	9,955,100.00	101.718750	SUNGARD	0.00
36803	FFCB-UBC	31331KET3	04/06/2011	.980000	5,000,000.00	5,051,562.50	13,338.89	63,712.50
			09/23/2013	1.080000	4,987,850.00	101.031250	SUNGARD	0.00
36844	FFCB-CITIG	31331KKQ2	05/12/2011	1.150000	5,000,000.00	5,062,500.00	7,826.39	62,500.00
			05/12/2014	1.150000	5,000,000.00	101.250000	SUNGARD	0.00
36861	FFCB-UBC	31331KPD6	06/20/2011	.625000	5,000,000.00	5,020,312.50	3,559.03	20,312.50
			11/20/2013	.625000	5,000,000.00	100.406250	SUNGARD	0.00
36866	FFCB-WF	31331KPS3	06/23/2011	.875000	10,000,000.00	10,075,000.00	1,944.44	82,400.00
			06/23/2014	.900000	9,992,600.00	100.750000	SUNGARD	0.00
36868	FFCB-UBS	31331KQF0	06/29/2011	.400000	10,000,000.00	10,009,375.00	6,888.89	9,375.00
			04/29/2013	.400000	10,000,000.00	100.093750	SUNGARD	0.00
36906	FFCB-GILFD	31331KUY4	09/23/2011	.250000	10,000,000.00	9,981,250.00	9,166.67	250.00
			08/19/2013	.350000	9,983,361.11	99.812500	SUNGARD	0.00
36909	FFCB-GILFD	31331KZJ2	09/23/2011	.350000	5,000,000.00	4,996,875.00	4,763.89	0.00
			09/23/2013	.380000	4,997,000.00	99.937500	SUNGARD	-125.00

# Inventory by Market Value



Run Date: 1/19/2012 2:14:25 PM

Investments Outstanding As Of Date: 12/31/2011

Inv. No.	Description	CUSIP	Purchase Maturity	Coupon YTM TR	Current Par /Share	Market Value	Curr Accr Int Price Source	Unrealized Gain
					Current Book	Market Price		Unrealized Loss
36910	FFCB-UBC	31331KA42	09/29/2011	.530000	5,000,000.00	4,990,625.00	6,772.22	0.00
			09/29/2014	.530000	5,000,000.00	99.812500	SUNGARD	-9,375.00
36911	FFCB-UBS	31331KZJ2	09/23/2011	.350000	5,000,000.00	4,996,875.00	4,763.89	0.00
			09/23/2013	.380000	4,997,000.00	99.937500	SUNGARD	-125.00
36938	FFCB-WF	31331KXA3	11/29/2011	.375000	10,000,000.00	10,000,000.00	11,979.16	6,200.00
			09/06/2013	.410000	10,002,445.83	100.000000	SUNGARD	0.00
Inv Type: 27 FEDERAL FARM CREDIT BANK BONDS				.642779	105,000,000.00	105,467,187.50	96,003.47	842,212.50
				.784627	104,645,606.94	100.444940		-9,625.00
36662	FHLMC-WF	3137EACC1	12/10/2010	1.750000	10,000,000.00	10,075,000.00	7,777.78	0.00
			06/15/2012	.615000	10,170,700.00	100.750000	SUNGARD	-95,700.00
36728	FHLMC-WF	3137EACL1	02/03/2011	.875000	5,000,000.00	5,039,062.50	7,656.25	74,712.50
			10/28/2013	1.140000	4,964,350.00	100.781250	SUNGARD	0.00
36735	FHLMC-WF	3137EACL1	02/09/2011	.875000	5,000,000.00	5,039,062.50	7,656.25	101,012.50
			10/28/2013	1.340000	4,938,050.00	100.781250	SUNGARD	0.00
36761	FHLMC-UBS	3137EACR8	03/07/2011	1.375000	10,000,000.00	10,162,500.00	48,125.00	166,100.00
			02/25/2014	1.387000	9,996,400.00	101.625000	SUNGARD	0.00
36764	FHLMC-WF	3137EACS6	03/08/2011	.750000	10,000,000.00	10,056,250.00	19,375.00	68,550.00
			03/28/2013	.810000	9,987,700.00	100.562500	SUNGARD	0.00
36781	FHLMC-UBS	3137EACP2	03/22/2011	.375000	5,000,000.00	5,009,375.00	1,614.58	27,425.00
			11/30/2012	.590000	4,981,950.00	100.187500	SUNGARD	0.00
36789	FHLMC-WF	3134G1WT7	03/30/2011	.515000	5,000,000.00	5,014,062.50	2,503.47	27,662.50
			11/26/2012	.680000	4,986,400.00	100.281250	SUNGARD	0.00
36790	FHLMC-UBS	3137EACP2	03/30/2011	.375000	5,000,000.00	5,009,375.00	1,614.58	37,125.00
			11/30/2012	.710000	4,972,250.00	100.187500	SUNGARD	0.00
36830	FHLMC-WF	3137EACP2	04/29/2011	.375000	5,000,000.00	5,009,375.00	1,614.58	17,675.00
			11/30/2012	.480000	4,991,700.00	100.187500	SUNGARD	0.00
36831	FHLMC-CITIG	3134G2FP2	05/09/2011	1.375000	10,000,000.00	10,034,375.00	19,861.11	34,375.00
			05/09/2014	1.375000	10,000,000.00	100.343750	SUNGARD	0.00
36847	FHLMC-UBC	3137EACP2	05/06/2011	.375000	5,000,000.00	5,009,375.00	1,614.58	12,575.00
			11/30/2012	.416000	4,996,800.00	100.187500	SUNGARD	0.00
36854	FHLMC-GILFD	3134G2KL5	06/13/2011	1.600000	5,000,000.00	5,023,437.50	24,000.00	23,437.50
			03/13/2015	1.600000	5,000,000.00	100.468750	SUNGARD	0.00
36896	FHLMC-WF	3134G2YJ5	08/26/2011	.500000	10,000,000.00	9,968,750.00	14,166.67	0.00
			09/19/2014	.600296	9,969,600.00	99.687500	SUNGARD	-850.00
36907	FHLMC-CITIG	3137EACX5	09/23/2011	.375000	5,000,000.00	4,993,750.00	3,177.08	0.00



# Inventory by Market Value



Run Date: 1/19/2012 2:14:25 PM

Investments Outstanding As Of Date: 12/31/2011

Inv. No.	Description	CUSIP	Purchase Maturity	Coupon YTM TR	Current Par /Share Current Book	Market Value Market Price	Curr Accr Int Price Source	Unrealized Gain Unrealized Loss
			10/30/2013	.364000	5,001,150.00	99.875000	SUNGARD	-7,400.00
36914	FHLMC-WF	3137EACX5	09/28/2011	.375000	5,000,000.00	4,993,750.00	3,177.08	0.00
			10/30/2013	.420000	4,995,300.00	99.875000	SUNGARD	-1,550.00
36915	FHLMC-GILFD	3134G2YJ5	09/28/2011	.500000	5,000,000.00	4,984,375.00	7,083.33	7,175.00
			09/19/2014	.655000	4,977,825.00	99.687500	SUNGARD	0.00
36920	FHLMC-WF	3137EACY3	10/11/2011	.750000	10,000,000.00	10,018,750.00	7,500.00	21,850.00
			11/25/2014	.760000	9,996,900.00	100.187500	SUNGARD	0.00
36923	FHLMC-GILFD	3134G2W73	10/18/2011	.500000	5,000,000.00	4,995,312.50	5,069.44	562.50
			10/18/2013	.553000	4,994,750.00	99.906250	SUNGARD	0.00
36930	FHLMC-CALL-WF	3134G27A4	11/25/2011	1.000000	5,000,000.00	5,001,562.50	5,000.00	1,562.50
			11/25/2015	1.000000	5,000,000.00	100.031250	SUNGARD	0.00
36934	FHLMC-WF	3137EACX5	11/21/2011	.375000	5,000,000.00	4,993,750.00	3,177.08	10,650.00
			10/30/2013	.550000	4,984,193.75	99.875000	SUNGARD	0.00
36937	FHLMC-CALL-UBC	3134G24Y5	11/23/2011	.875000	5,000,000.00	5,003,125.00	5,711.81	4,425.00
			11/14/2014	.884000	4,999,793.75	100.062500	SUNGARD	0.00
36943	FHLMC-CALL-GILFD	3134G3CL2	12/16/2011	1.000000	5,000,000.00	5,001,562.50	2,083.33	5,012.50
			06/16/2015	1.020000	4,996,550.00	100.031250	SUNGARD	0.00
36944	FHLMC-CALL-GILFD	3134G3CY4	12/19/2011	1.500000	5,000,000.00	5,009,375.00	2,500.00	9,375.00
			12/19/2016	1.500000	5,000,000.00	100.187500	SUNGARD	0.00
36951	FHLMC-CALL-UBS	3134G3FC9	12/30/2011	1.000000	5,000,000.00	4,998,437.50	138.89	0.00
			09/30/2015	1.000000	5,000,000.00	99.968750	SUNGARD	-1,562.50
36952	FHLMC-CALL-GILFD	3134G3FL9	12/27/2011	.650000	5,000,000.00	4,995,312.50	361.11	0.00
			06/27/2014	.656000	4,999,250.00	99.906250	SUNGARD	-3,937.50
36955	FHLMC-GILFD	3137EADA4	12/16/2011	.625000	5,000,000.00	4,996,875.00	1,302.08	6,125.00
			12/29/2014	.687000	4,990,750.00	99.937500	SUNGARD	0.00
Inv Type: 30 FED HOME LOAN MORTGAGE CORP				.849461	160,000,000.00	160,435,937.50	203,861.08	657,387.50
				.854078	159,892,362.50	100.272461		-111,000.00
36795	FNMA-DISC-WF	313588SN6	03/30/2011	.220000	10,154,000.00	10,154,000.00	0.00	19,112.08
			02/01/2012	.223000	10,134,887.92	100.000000	SUNGARD	0.00
36878	FNMA-DISC-WF	313588SN6	06/24/2011	.100000	14,484,000.00	14,484,000.00	0.00	8,931.80
			02/01/2012	.101000	14,475,068.20	100.000000	SUNGARD	0.00
36905	FNMA-DISC-CITIG	313588YW9	09/09/2011	.150000	9,512,000.00	9,509,027.50	0.00	8,798.60
			07/02/2012	.153000	9,500,228.90	99.968750	SUNGARD	0.00
36912	FNMA-DISC-UBS	313588YW9	09/23/2011	.130000	5,010,000.00	5,008,434.38	0.00	3,554.32
			07/02/2012	.132000	5,004,880.06	99.968750	SUNGARD	0.00

# Inventory by Market Value



Run Date: 1/19/2012 2:14:25 PM

Investments Outstanding As Of Date: 12/31/2011

Inv. No.	Description	CUSIP	Purchase Maturity	Coupon YTM TR	Current Par /Share		Market Value Market Price	Curr Accr Int Price Source	Unrealized Gain	
					Current Book				Unrealized Loss	
36925	FNMA-DISC-UBS	313588YW9	10/12/2011	.100000	10,000,000.00		9,996,875.00	0.00		4,208.33
			07/02/2012	.102000	9,992,666.67	99.968750	SUNGARD	0.00		
36927	FNMA-DISC-CITIG	313588YW9	10/20/2011	.120000	9,225,000.00		9,222,117.19	0.00		4,989.19
			07/02/2012	.122000	9,217,128.00	99.968750	SUNGARD	0.00		
Inv Type: 41 FNMA DISCOUNT NOTES				.134731	58,385,000.00		58,374,454.07	0.00		49,594.32
				.136820	58,324,859.75		99.981937			0.00
36887	FHLB-DISC-CITIG	313384XP9	07/25/2011	.170000	20,000,000.00		20,000,000.00	0.00		29,466.67
			06/01/2012	.173000	19,970,533.33	100.000000	SUNGARD	0.00		
36919	FHLB-DISC-CITIG	313384YW3	10/07/2011	.120000	14,163,000.00		14,158,574.06	0.00		8,273.55
			07/02/2012	.122000	14,150,300.51	99.968750	SUNGARD	0.00		
Inv Type: 43 FHLB DISCOUNT NOTES				.149264	34,163,000.00		34,158,574.06	0.00		37,740.22
				.151850	34,120,833.84		99.987045			0.00
36796	FHLMC-DISC-WF	313396UF8	04/01/2011	.280000	14,327,000.00		14,327,000.00	0.00		38,666.98
			03/13/2012	.285000	14,288,333.02	100.000000	SUNGARD	0.00		
36798	FHLMC-DISC-CITIG	313396UJ0	04/04/2011	.230000	9,450,000.00		9,450,000.00	0.00		20,950.12
			03/16/2012	.234000	9,429,049.88	100.000000	SUNGARD	0.00		
36891	FHLMC-DISC-WF	313396TM5	08/03/2011	.150000	5,795,000.00		5,795,000.00	0.00		4,949.90
			02/24/2012	.152000	5,790,050.10	100.000000	SUNGARD	0.00		
Inv Type: 44 FHLMC DISCOUNT NOTES				.238514	29,572,000.00		29,572,000.00	0.00		64,567.00
				.242605	29,507,433.00		100.000000			0.00
36921	NCD-UBOC-UBC	90527MUR5	10/11/2011	.270000	10,000,000.00		10,000,798.90	6,150.00		798.90
			02/01/2012	.270000	10,000,000.00	100.007989	SUNGARD	0.00		
36948	NCD-UBOC-UBC	90527MXB7	12/09/2011	.250000	15,000,000.00		15,000,932.82	2,395.83		932.82
			02/01/2012	.250000	15,000,000.00	100.006219	SUNGARD	0.00		
36954	NCD-UBOC-UBC	90527MXR2	12/16/2011	.250000	15,000,000.00		15,000,932.93	1,666.67		932.93
			02/01/2012	.250000	15,000,000.00	100.006220	SUNGARD	0.00		
Inv Type: 71 NEGOTIABLE CERT OF DEPOSIT				.255000	40,000,000.00		40,002,664.65	10,212.50		2,664.65
				.255000	40,000,000.00		100.006662			0.00
36928	CP-DISC-TOYOTA-TOY	89233GB13	10/21/2011	.260000	6,243,000.00		6,241,548.50	0.00		3,192.60
			02/01/2012	.265000	6,238,355.90	99.976750	SUNGARD	0.00		
36929	CP-DISC-HSBC FIN CO	4042F0B18	10/31/2011	.390000	8,227,000.00		8,225,087.22	0.00		6,375.92

# Inventory by Market Value



Run Date: 1/19/2012 2:14:25 PM

Investments Outstanding As Of Date: 12/31/2011

Inv. No.	Description	CUSIP	Purchase Maturity	Coupon YTM TR	Current Par /Share Current Book	Market Value Market Price	Curr Accr Int Price Source	Unrealized Gain Unrealized Loss
			02/01/2012	.397000	8,218,711.30	99.976750	SUNGARD	0.00
36932	CP-DISC-UBS FIN DEL	90262CAJ6	11/18/2011	.300000	6,572,000.00	6,571,162.07	0.00	2,502.84
			01/18/2012	.305000	6,568,659.23	99.987250	SUNGARD	0.00
36949	CP-DISC-HSBC FIN CO	4042F0BN0	12/09/2011	.360000	12,855,000.00	12,849,986.55	0.00	4,627.80
			02/22/2012	.366000	12,845,358.75	99.961000	SUNGARD	0.00
36950	CP-DISC-HSBC FIN CO	4042F0B18	12/14/2011	.280000	11,926,000.00	11,923,227.21	0.00	1,772.34
			02/01/2012	.285000	11,921,454.87	99.976750	SUNGARD	0.00
Inv Type: 82 COMMERCIAL PAPER, DISCOUNT BAS				.322328	45,823,000.00	45,811,011.55	0.00	18,471.50
				.327967	45,792,540.05	99.973837		0.00
36510	BLACKROCK LIQUIDITY	09248U700	07/01/2010	.010000	1,000,000.00	1,000,000.00	-786.99	0.00
			06/30/2012	.010000	1,000,000.00	100.000000	BOOK	0.00
36511	MORGAN STANLEY INST	61747C707	07/01/2010	.030000	641,000.00	641,000.00	-49.30	0.00
			06/30/2012	.030000	641,000.00	100.000000	BOOK	0.00
36512	FEDERATED GOVT OBLI	VP6000104	07/01/2010	.010000	549,000.00	549,000.00	-679.34	0.00
			06/30/2012	.010000	549,000.00	100.000000	BOOK	0.00
Inv Type: 97 WFB MONEY MARKET FUND				.015854	2,190,000.00	2,190,000.00	-1,515.63	0.00
				.015854	2,190,000.00	100.000000		0.00
32936	STATE INVESTMT POOL		01/01/2002	.380759	40,253,000.00	40,253,000.00	-2.52	0.00
			06/30/2012	.380759	40,253,000.00	100.000000	BOOK	0.00
33658	STATE INVESTMT POOL		10/01/2003	.380759	41,250,000.00	41,250,000.00	-2.18	0.00
			06/30/2012	.380759	41,250,000.00	100.000000	BOOK	0.00
Inv Type: 99 PASSBOOK & STATE POOL				.380759	81,503,000.00	81,503,000.00	-4.70	0.00
				.380759	81,503,000.00	100.000000		0.00
			<b>Subtotal</b>	.604504	914,636,000.00	917,147,641.83	870,588.81	3,897,007.69
				.646580	913,433,451.50	100.274606		-163,587.50
<b>Fund: 34 CSJ/CSC Jt Pwr</b>								
36696	FHLB-DISC-CITIG	313384RK7	01/05/2011	.300000	854,000.00	854,000.00	0.00	2,597.58
			01/05/2012	.305000	851,402.42	100.000000	SUNGARD	0.00
Inv Type: 43 FHLB DISCOUNT NOTES				.300000	854,000.00	854,000.00	0.00	2,597.58
				.305000	851,402.42	100.000000		0.00

# Inventory by Market Value



Run Date: 1/19/2012 2:14:25 PM

Investments Outstanding As Of Date: 12/31/2011

Inv. No.	Description	CUSIP	Purchase Maturity	Coupon YTM TR	Current Par /Share Current Book	Market Value Market Price	Curr Accr Int Price Source	Unrealized Gain Unrealized Loss
<b>Subtotal</b>				.300000	854,000.00	854,000.00	0.00	2,597.58
				.305000	851,402.42	100.000000		0.00
<b>Fund: 55 Series 2008B-RDA Tax Allocation</b>								
35894	Series 2008 B-RDA T		11/14/2008	.380759	12,677,034.24	12,677,034.24	0.00	0.00
			06/30/2012	.380759	12,677,034.24	100.000000	BOOK	0.00
Inv Type: 99 PASSBOOK & STATE POOL				.380759	12,677,034.24	12,677,034.24	0.00	0.00
				.380759	12,677,034.24	100.000000		0.00
<b>Subtotal</b>				.380759	12,677,034.24	12,677,034.24	0.00	0.00
				.380759	12,677,034.24	100.000000		0.00
<b>Grand Total</b>			Count 123	.601164	928,167,034.24	930,678,676.07	870,588.81	3,899,605.27
				.642631	926,961,888.16	100.270602		-163,587.50

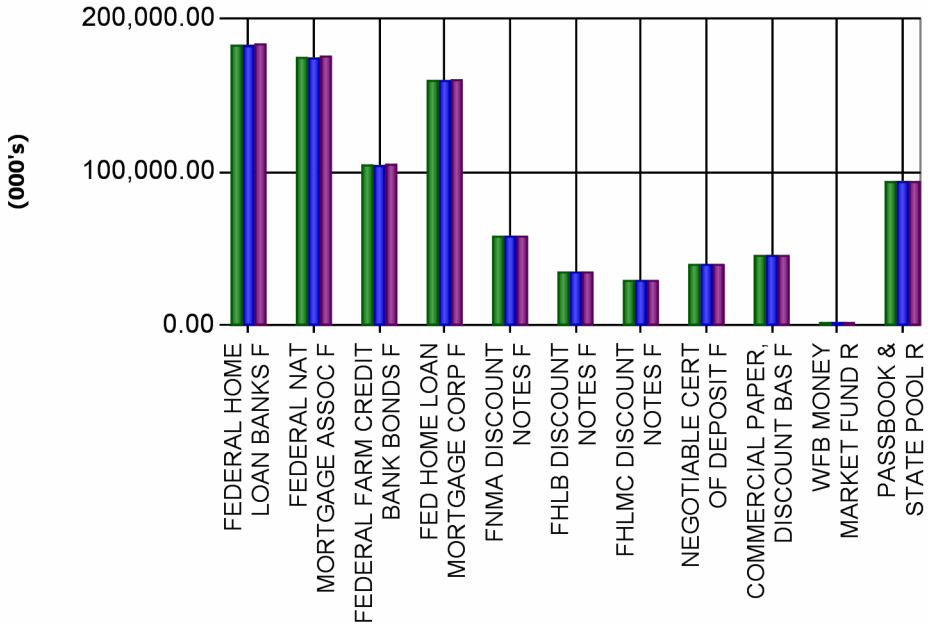


Run Date: 1/19/2012 2:14:25 PM

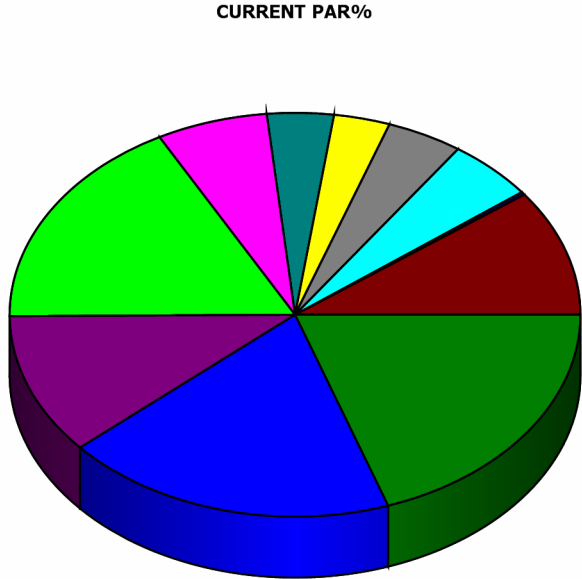
## Asset Allocation

Investments Outstanding As Of Date: 12/31/2011

Assets (000's)	Current Par	Current Book	Market	MKT/Book	Un Gain/Loss	Yield
FEDERAL HOME LOAN BANKS F	183,000.00	182,801.69	183,770.31	100.53 %	972.21	0.68 %
FEDERAL NAT MORTGAGE ASSOC F	175,000.00	174,655.12	175,862.50	100.69 %	1,209.20	0.98 %
FEDERAL FARM CREDIT BANK BONDS	105,000.00	104,645.61	105,467.19	100.79 %	832.59	0.78 %
FED HOME LOAN MORTGAGE CORP F	160,000.00	159,892.36	160,435.94	100.34 %	546.39	0.85 %
FNMA DISCOUNT NOTES F	58,385.00	58,324.86	58,374.45	100.09 %	49.59	0.14 %
FHLB DISCOUNT NOTES F	35,017.00	34,972.24	35,012.57	100.12 %	40.34	0.16 %
FHLMC DISCOUNT NOTES F	29,572.00	29,507.43	29,572.00	100.22 %	64.57	0.24 %
NEGOTIABLE CERT OF DEPOSIT F	40,000.00	40,000.00	40,002.66	100.01 %	2.66	0.26 %
COMMERCIAL PAPER, DISCOUNT BAS	45,823.00	45,792.54	45,811.01	100.04 %	18.47	0.33 %
WFB MONEY MARKET FUND R	2,190.00	2,190.00	2,190.00	100.00 %	0.00	0.02 %
PASSBOOK & STATE POOL R	94,180.03	94,180.03	94,180.03	100.00 %	0.00	0.38 %
<b>Totals(000's)</b>	<b>928,167.03</b>	<b>926,961.89</b>	<b>930,678.68</b>	<b>100.40 %</b>	<b>3,736.02</b>	<b>0.64 %</b>



Par Book Market



- FEDERAL HOME LOAN BANKS F - 20%
- FHLMC DISCOUNT NOTES F - 3%
- FEDERAL NAT MORTGAGE ASSOC F - 19%
- NEGOTIABLE CERT OF DEPOSIT F - 4%
- FEDERAL FARM CREDIT BANK BONDS F - 11...
- COMMERCIAL PAPER, DISCOUNT BAS F - 5%
- FED HOME LOAN MORTGAGE CORP F - 17%
- WFB MONEY MARKET FUND R - 0%
- FNMA DISCOUNT NOTES F - 6%
- PASSBOOK & STATE POOL R - 10%
- FHLB DISCOUNT NOTES F - 4%

## **SECTION E**

### **DETAIL OF INVESTMENT ACTIVITY**

This report summarizes investment activity during the report period by type of activity rather than by type of security. The report shows all interest received during the report period, and all maturities, purchases and sales. The report also shows all “paydowns” on securities on which principal is amortized rather than due at maturity (e.g. federal agency securities).

The last part of the report shows the number of transactions placed with each dealer and includes the total dollar amount of transactions per dealer.





DETAIL TRANSACTION REPORT - FIXED INCOME



Run Date: 1/19/2012 2:11:44 PM

From Date: 10/1/2011 To Date: 12/31/2011

Inv. No.	Description Memo	Pool#	CUSIP Fund	Cash Maturity	Entered User ID	Traded Settled	TXN Type	Coupon Yield	Par Value Original Face	Book Value Prem / (Disc)	(Interest) Amort / (Accret)	(Gain) / Loss Settlement
<b>Fund: 1 INVESTMENT FUNDS</b>												
36879	FHLB-GILF		313374CH1	10/17/2011	10/18/2011	10/17/2011	INTR	1.000	0.00	-1,841.67	-15,158.33	0.00
			1	10/17/2014	UyenL	10/17/2011		1.000	0.00	0.00	0.00	17,000.00
36880	FHLB-GILFD		313374CH1	10/17/2011	10/18/2011	10/17/2011	INTR	1.000	0.00	-1,769.44	-14,563.89	0.00
			1	10/17/2014	UyenL	10/17/2011		1.000	0.00	0.00	0.00	16,333.33
36864	FHLB-WF		313374GK0	10/23/2011	10/25/2011	10/23/2011	INTR	1.030	0.00	0.00	-32,330.56	0.00
			1	10/23/2014	UyenL	10/23/2011		1.030	0.00	0.00	0.00	32,330.56
36810	FHLB-GILFD		313373HA3	10/28/2011	10/31/2011	10/28/2011	INTR	1.200	0.00	0.00	-30,000.00	0.00
			1	10/28/2013	UyenL	10/28/2011		1.200	0.00	0.00	0.00	30,000.00
36867	FHLB-GILFD		313374H37	10/30/2011	11/01/2011	10/30/2011	INTR	.850	0.00	0.00	-14,166.67	0.00
			1	04/30/2014	UyenL	10/30/2011		.850	0.00	0.00	0.00	14,166.67
36871	FHLB-WF		313374CR9	10/30/2011	11/01/2011	10/30/2011	INTR	.400	0.00	-666.67	-14,111.11	0.00
			1	04/30/2013	UyenL	10/30/2011		.410	0.00	0.00	0.00	14,777.78
36805	FHLB-WF		313373BK7	11/08/2011	11/09/2011	11/08/2011	INTR	1.170	0.00	0.00	-29,250.00	0.00
			1	11/08/2013	UyenL	11/08/2011		1.170	0.00	0.00	0.00	29,250.00
36737	FHLB-WF		313372PA6	11/16/2011	11/17/2011	11/16/2011	INTR	1.000	0.00	0.00	-25,000.00	0.00
			1	05/16/2013	UyenL	11/16/2011		1.000	0.00	0.00	0.00	25,000.00
36842	FHLB-WF		313373RG9	11/16/2011	11/17/2011	11/16/2011	INTR	.750	0.00	0.00	-16,875.00	0.00
			1	07/30/2013	UyenL	11/16/2011		.730	0.00	0.00	0.00	16,875.00
36843	FHLB-WF		313373S37	11/16/2011	11/17/2011	11/16/2011	INTR	.750	0.00	0.00	-18,750.00	0.00
			1	08/28/2013	UyenL	11/16/2011		.750	0.00	0.00	0.00	18,750.00
36926	FHLB-UBS		3133762C8	11/27/2011	11/29/2011	11/27/2011	INTR	.375	0.00	0.00	-2,239.58	0.00
			1	11/27/2013	UyenL	11/27/2011		.480	0.00	0.00	0.00	2,239.58
36858	FHLB-GILFD		313373ZV7	12/08/2011	12/12/2011	12/08/2011	INTR	1.770	0.00	0.00	-26,550.00	0.00
			1	06/08/2015	UyenL	12/08/2011		1.770	0.00	0.00	0.00	26,550.00
36860	FHLB-WF		3133745V8	12/21/2011	12/22/2011	12/21/2011	INTR	.500	0.00	0.00	-25,000.00	0.00
			1	06/21/2013	UyenL	12/21/2011		.500	0.00	0.00	0.00	25,000.00
36665	FHLB-GILFD		313371PM2	12/26/2011	01/03/2012	12/26/2011	INTR	.500	0.00	0.00	-25,000.00	0.00
			1	06/26/2013	UyenL	12/26/2011		.924	0.00	0.00	0.00	25,000.00
36788	FHLB-WF		313371UC8	12/27/2011	01/03/2012	12/27/2011	INTR	.875	0.00	0.00	-21,875.00	0.00
			1	12/27/2013	UyenL	12/27/2011		1.250	0.00	0.00	0.00	21,875.00
36863	FHLB-CALL-CITIG		3133747F1	12/27/2011	01/03/2012	12/27/2011	INTR	.700	0.00	0.00	-35,000.00	0.00
			1	09/27/2013	UyenL	12/27/2011		.700	0.00	0.00	0.00	35,000.00
36882	FHLB-GILFD		313374GA2	12/29/2011	01/03/2012	12/29/2011	INTR	1.125	0.00	-140.63	-25,171.87	0.00

DETAIL TRANSACTION REPORT - FIXED INCOME



Run Date: 1/19/2012 2:11:44 PM

From Date: 10/1/2011 To Date: 12/31/2011

Inv. No.	Description Memo	Pool#	CUSIP Fund	Cash Maturity	Entered User ID	Traded Settled	TXN Type	Coupon Yield	Par Value Original Face	Book Value Prem / (Disc)	(Interest) Amort / (Accret)	(Gain) / Loss Settlement
			1	12/29/2014	UyenL	12/29/2011		1.170	0.00	0.00	0.00	25,312.50
								.805	0.00	-4,418.41	-371,042.01	0.00
								.869	0.00	0.00	0.00	375,460.42
36685	FHLB-WF		313371WJ1		11/28/2011	11/23/2011	AMRT	.300	0.00	3,200.00	0.00	0.00
			1	11/23/2011	UyenL	11/23/2011		.335	0.00	0.00	-3,200.00	0.00
								.300	0.00	3,200.00	0.00	0.00
								.335	0.00	0.00	-3,200.00	0.00
36685	FHLB-WF		313371WJ1		11/28/2011	11/23/2011	MAT	.300	-10,000,000.00	-10,000,000.00	-15,000.00	0.00
			1	11/23/2011	UyenL	11/23/2011		.335	0.00	0.00	0.00	10,015,000.00
								.300	-10,000,000.00	-10,000,000.00	-15,000.00	0.00
								.335	0.00	0.00	0.00	10,015,000.00
36926	FHLB-UBS		3133762C8		10/13/2011	10/13/2011	PURC	.375	5,000,000.00	4,988,900.00	0.00	0.00
			1	11/27/2013	UyenL	10/14/2011		.480	0.00	-11,100.00	0.00	-4,988,900.00
36939	FHLB-WF		313376D36		11/28/2011	11/28/2011	PURC	.300	5,000,000.00	4,999,041.67	0.00	0.00
			1	05/16/2013	UyenL	11/29/2011		.321	0.00	-958.33	0.00	-4,999,041.67
36945	FHLB-CALL-CITIG		313374SU5		11/29/2011	11/28/2011	PURC	.350	6,000,000.00	6,001,808.33	0.00	0.00
			1	08/10/2012	UyenL	11/29/2011		.350	0.00	1,808.33	0.00	-6,001,808.33
36936	FHLB-UBC		313376GY5		11/18/2011	11/18/2011	PURC	.330	10,000,000.00	9,996,700.00	0.00	0.00
			1	07/01/2013	UyenL	11/30/2011		.351	0.00	-3,300.00	0.00	-9,996,700.00
36942	FHLB-UBC		313376GT6		11/28/2011	11/28/2011	PURC	.350	5,000,000.00	5,000,000.00	0.00	0.00
			1	05/30/2013	UyenL	11/30/2011		.350	0.00	0.00	0.00	-5,000,000.00
								.340	31,000,000.00	30,986,450.00	0.00	0.00
								.367	0.00	-13,550.00	0.00	-30,986,450.00
								.650	21,000,000.00	20,985,231.59	-386,042.01	0.00
								.703	0.00	-13,550.00	-3,200.00	-20,595,989.58
36800	FNMA-UBC		3136FPUC9	10/30/2011	11/01/2011	10/30/2011	INTR	.500	0.00	0.00	-25,000.00	0.00
			1	10/30/2012	UyenL	10/30/2011		.578	0.00	0.00	0.00	25,000.00
36918	FNMA-GILFD		3135G0DW0	10/30/2011	11/01/2011	10/30/2011	INTR	.625	0.00	-607.64	-2,256.94	0.00
			1	10/30/2014	UyenL	10/30/2011		.650	0.00	0.00	0.00	2,864.58
36772	FNMA-CALL-GILF		31398A5Q1	11/08/2011	11/09/2011	11/08/2011	INTR	.875	0.00	0.00	-10,959.38	0.00
			1	11/08/2013	UyenL	11/08/2011		1.128	0.00	0.00	0.00	10,959.38
36777	FNMA-CALL-GILF		31398A6D9	11/18/2011	11/21/2011	11/18/2011	INTR	.800	0.00	0.00	-20,000.00	0.00

DETAIL TRANSACTION REPORT - FIXED INCOME



Run Date: 1/19/2012 2:11:44 PM

From Date: 10/1/2011 To Date: 12/31/2011

Inv. No.	Description Memo	Pool#	CUSIP Fund	Cash Maturity	Entered User ID	Traded Settled	TXN Type	Coupon Yield	Par Value Original Face	Book Value Prem / (Disc)	(Interest) Amort / (Accret)	(Gain) / Loss Settlement
			1	11/18/2013	UyenL	11/18/2011		1.074	0.00	0.00	0.00	20,000.00
36848	FNMA-UBC		31398A6D9	11/18/2011	11/21/2011	11/18/2011	INTR	.800	0.00	0.00	-20,000.00	0.00
			1	11/18/2013	UyenL	11/18/2011		.855	0.00	0.00	0.00	20,000.00
36799	FNMA-CALL-WF		31398A6K3	11/29/2011	11/30/2011	11/29/2011	INTR	.800	0.00	0.00	-20,000.00	0.00
			1	11/29/2013	UyenL	11/29/2011		1.204	0.00	0.00	0.00	20,000.00
36853	FNMA-WF		3136FRPX5	12/15/2011	12/16/2011	12/15/2011	INTR	2.200	0.00	0.00	-55,000.00	0.00
			1	06/15/2016	UyenL	12/15/2011		2.200	0.00	0.00	0.00	55,000.00
36720	FNMA-WF		31398A5W8	12/18/2011	12/19/2011	12/18/2011	INTR	.750	0.00	0.00	-18,750.00	0.00
			1	12/18/2013	UyenL	12/18/2011		1.130	0.00	0.00	0.00	18,750.00
36730	FNMA-WF		31398A5W8	12/18/2011	12/19/2011	12/18/2011	INTR	.750	0.00	0.00	-18,750.00	0.00
			1	12/18/2013	UyenL	12/18/2011		1.300	0.00	0.00	0.00	18,750.00
36941	FNMA-UBC		3135G0FY4	12/19/2011	12/19/2011	12/19/2011	INTR	.750	0.00	-1,250.00	-2,083.34	0.00
			1	12/19/2014	UyenL	12/19/2011		.750	0.00	0.00	0.00	3,333.34
36846	FNMA-WF		31398A6F4	12/28/2011	01/03/2012	12/28/2011	INTR	.375	0.00	0.00	-18,750.00	0.00
			1	12/28/2012	UyenL	12/28/2011		.440	0.00	0.00	0.00	18,750.00
INTR								.773	0.00	-1,857.64	-211,549.66	0.00
								.941	0.00	0.00	0.00	213,407.30
36772	FNMA-CALL-GILF		31398A5Q1		11/09/2011	11/08/2011	CALL	.875	-2,505,000.00	-2,488,517.10	0.00	-16,482.90
			1	11/08/2013	UyenL	11/08/2011		1.128	0.00	16,482.90	0.00	2,505,000.00
36799	FNMA-CALL-WF		31398A6K3		11/30/2011	11/29/2011	CALL	.800	-5,000,000.00	-4,947,500.00	0.00	-52,500.00
			1	11/29/2013	UyenL	11/29/2011		1.204	0.00	52,500.00	0.00	5,000,000.00
CALL								.825	-7,505,000.00	-7,436,017.10	0.00	-68,982.90
								1.179	0.00	68,982.90	0.00	7,505,000.00
36918	FNMA-GILFD		3135G0DW0		10/03/2011	10/03/2011	PURC	.625	5,000,000.00	4,996,807.64	0.00	0.00
			1	10/30/2014	UyenL	10/04/2011		.650	0.00	-3,192.36	0.00	-4,996,807.64
36924	FNMA-GILFD		3136FTEK1		10/07/2011	10/07/2011	PURC	1.500	5,000,000.00	5,000,000.00	0.00	0.00
			1	10/28/2016	UyenL	10/28/2011		1.500	0.00	0.00	0.00	-5,000,000.00
36935	FNMA-UBS		3135G0DW0		11/18/2011	11/18/2011	PURC	.625	5,000,000.00	4,985,822.92	0.00	0.00
			1	10/30/2014	UyenL	11/21/2011		.735	0.00	-14,177.08	0.00	-4,985,822.92
36941	FNMA-UBC		3135G0FY4		11/28/2011	11/28/2011	PURC	.750	5,000,000.00	5,001,250.00	0.00	0.00
			1	12/19/2014	UyenL	11/29/2011		.750	0.00	1,250.00	0.00	-5,001,250.00
36953	FNMA-CALL-WF		3135G0GP2		12/14/2011	12/14/2011	PURC	.750	10,000,000.00	10,000,000.00	0.00	0.00

DETAIL TRANSACTION REPORT - FIXED INCOME



Run Date: 1/19/2012 2:11:44 PM

From Date: 10/1/2011 To Date: 12/31/2011

Inv. No.	Description Memo	Pool#	CUSIP Fund	Cash Maturity	Entered User ID	Traded Settled	TXN Type	Coupon Yield	Par Value Original Face	Book Value Prem / (Disc)	(Interest) Amort / (Accret)	(Gain) / Loss Settlement
			1	12/19/2014	UyenL	12/19/2011		.750	0.00	0.00	0.00	-10,000,000.00
PURC								.833	30,000,000.00	29,983,880.56	0.00	0.00
								.856	0.00	-16,119.44	0.00	-29,983,880.56
								.795	22,495,000.00	22,546,005.82	-211,549.66	-68,982.90
								.933	0.00	52,863.46	0.00	-22,265,473.26
35860	FFCB-WF		31331GDC0	10/17/2011	UyenL	10/14/2011	MAT	3.600	-10,000,000.00	-10,000,000.00	-180,000.00	0.00
			1	10/14/2011	UyenL	10/14/2011		3.600	0.00	0.00	0.00	10,180,000.00
35895	FFCB-UBS		31331GFC8	11/23/2011	UyenL	11/21/2011	MAT	3.200	-10,000,000.00	-10,000,000.00	-160,000.00	0.00
			1	11/21/2011	UyenL	11/21/2011		3.200	0.00	0.00	0.00	10,160,000.00
MAT								3.400	-20,000,000.00	-20,000,000.00	-340,000.00	0.00
								3.400	0.00	0.00	0.00	20,340,000.00
36868	FFCB-UBS		31331KQF0	10/29/2011	UyenL	10/29/2011	INTR	.400	0.00	0.00	-13,333.33	0.00
			1	04/29/2013	UyenL	10/29/2011		.400	0.00	0.00	0.00	13,333.33
36686	FFCB-WF		31331JY56	11/02/2011	UyenL	11/02/2011	INTR	.400	0.00	0.00	-20,000.00	0.00
			1	11/02/2012	UyenL	11/02/2011		.710	0.00	0.00	0.00	20,000.00
36736	FFCB-WF		31331JY64	11/04/2011	UyenL	11/04/2011	INTR	.700	0.00	0.00	-35,000.00	0.00
			1	11/04/2013	UyenL	11/04/2011		1.370	0.00	0.00	0.00	35,000.00
36844	FFCB-CITIG		31331KKQ2	11/12/2011	UyenL	11/12/2011	INTR	1.150	0.00	0.00	-28,750.00	0.00
			1	05/12/2014	UyenL	11/12/2011		1.150	0.00	0.00	0.00	28,750.00
36861	FFCB-UBC		31331KPD6	11/20/2011	UyenL	11/20/2011	INTR	.625	0.00	0.00	-13,020.83	0.00
			1	11/20/2013	UyenL	11/20/2011		.625	0.00	0.00	0.00	13,020.83
36727	FFCB-WF		31331J2Z5	11/26/2011	UyenL	11/26/2011	INTR	.920	0.00	0.00	-23,000.00	0.00
			1	11/26/2013	UyenL	11/26/2011		1.160	0.00	0.00	0.00	23,000.00
36659	FFCB-CALL-WF		31331J4T7	12/16/2011	UyenL	12/16/2011	INTR	1.350	0.00	0.00	-33,750.00	0.00
			1	12/16/2013	UyenL	12/16/2011		1.350	0.00	0.00	0.00	33,750.00
36739	FFCB-WF		31331J6A6	12/23/2011	UyenL	12/23/2011	INTR	1.300	0.00	0.00	-65,000.00	0.00
			1	12/23/2013	UyenL	12/23/2011		1.460	0.00	0.00	0.00	65,000.00
36866	FFCB-WF		31331KPS3	12/23/2011	UyenL	12/23/2011	INTR	.875	0.00	0.00	-43,750.00	0.00
			1	06/23/2014	UyenL	12/23/2011		.900	0.00	0.00	0.00	43,750.00
INTR								.814	0.00	0.00	-275,604.16	0.00
								.998	0.00	0.00	0.00	275,604.16
36659	FFCB-CALL-WF		31331J4T7	12/19/2011	UyenL	12/16/2011	CALL	1.350	-5,000,000.00	-5,000,000.00	0.00	0.00

DETAIL TRANSACTION REPORT - FIXED INCOME



Run Date: 1/19/2012 2:11:44 PM

From Date: 10/1/2011 To Date: 12/31/2011

Inv. No.	Description Memo	Pool#	CUSIP Fund	Cash Maturity	Entered User ID	Traded Settled	TXN Type	Coupon Yield	Par Value Original Face	Book Value Prem / (Disc)	(Interest) Amort / (Accret)	(Gain) / Loss Settlement
			1	12/16/2013	UyenL	12/16/2011		1.350	0.00	0.00	0.00	5,000,000.00
CALL								1.350	-5,000,000.00	-5,000,000.00	0.00	0.00
								1.350	0.00	0.00	0.00	5,000,000.00
36938	FFCB-WF		31331KXA3		11/28/2011	11/28/2011	PURC	.375	10,000,000.00	10,002,445.83	0.00	0.00
			1	09/06/2013	UyenL	11/29/2011		.410	0.00	2,445.83	0.00	-10,002,445.83
PURC								.375	10,000,000.00	10,002,445.83	0.00	0.00
								.410	0.00	2,445.83	0.00	-10,002,445.83
Inv Type: 27 FEDERAL FARM CREDIT BANK BONDS								1.290	-15,000,000.00	-14,997,554.17	-615,604.16	0.00
								1.416	0.00	2,445.83	0.00	15,613,158.33
36791	FHLMC-CALL-GILF		3134G1VH4	10/07/2011	10/11/2011	10/07/2011	INTR	1.150	0.00	0.00	-28,750.00	0.00
			1	10/07/2013	UyenL	10/07/2011		1.259	0.00	0.00	0.00	28,750.00
36728	FHLMC-WF		3137EACL1	10/28/2011	10/31/2011	10/28/2011	INTR	.875	0.00	0.00	-21,875.00	0.00
			1	10/28/2013	UyenL	10/28/2011		1.140	0.00	0.00	0.00	21,875.00
36735	FHLMC-WF		3137EACL1	10/28/2011	10/31/2011	10/28/2011	INTR	.875	0.00	0.00	-21,875.00	0.00
			1	10/28/2013	UyenL	10/28/2011		1.340	0.00	0.00	0.00	21,875.00
36907	FHLMC-CITIG		3137EACX5	10/30/2011	11/01/2011	10/30/2011	INTR	.375	0.00	-208.33	-1,927.09	0.00
			1	10/30/2013	UyenL	10/30/2011		.364	0.00	0.00	0.00	2,135.42
36914	FHLMC-WF		3137EACX5	10/30/2011	11/01/2011	10/30/2011	INTR	.375	0.00	-468.75	-1,666.67	0.00
			1	10/30/2013	UyenL	10/30/2011		.420	0.00	0.00	0.00	2,135.42
36831	FHLMC-CITIG		3134G2FP2	11/09/2011	11/10/2011	11/09/2011	INTR	1.375	0.00	0.00	-68,750.00	0.00
			1	05/09/2014	UyenL	11/09/2011		1.375	0.00	0.00	0.00	68,750.00
36920	FHLMC-WF		3137EACY3	11/25/2011	11/28/2011	11/25/2011	INTR	.750	0.00	-1,041.67	-9,166.66	0.00
			1	11/25/2014	UyenL	11/25/2011		.760	0.00	0.00	0.00	10,208.33
36789	FHLMC-WF		3134G1WT7	11/26/2011	11/29/2011	11/26/2011	INTR	.515	0.00	0.00	-12,875.00	0.00
			1	11/26/2012	UyenL	11/26/2011		.680	0.00	0.00	0.00	12,875.00
36781	FHLMC-UBS		3137EACP2	11/30/2011	12/01/2011	11/30/2011	INTR	.375	0.00	0.00	-9,375.00	0.00
			1	11/30/2012	UyenL	11/30/2011		.590	0.00	0.00	0.00	9,375.00
36790	FHLMC-UBS		3137EACP2	11/30/2011	12/01/2011	11/30/2011	INTR	.375	0.00	0.00	-9,375.00	0.00
			1	11/30/2012	UyenL	11/30/2011		.710	0.00	0.00	0.00	9,375.00
36830	FHLMC-WF		3137EACP2	11/30/2011	12/01/2011	11/30/2011	INTR	.375	0.00	0.00	-9,375.00	0.00
			1	11/30/2012	UyenL	11/30/2011		.480	0.00	0.00	0.00	9,375.00
36847	FHLMC-UBC		3137EACP2	11/30/2011	12/01/2011	11/30/2011	INTR	.375	0.00	0.00	-9,375.00	0.00
			1	11/30/2012	UyenL	11/30/2011		.416	0.00	0.00	0.00	9,375.00
36662	FHLMC-WF		3137EACC1	12/15/2011	12/16/2011	12/15/2011	INTR	1.750	0.00	0.00	-87,500.00	0.00

DETAIL TRANSACTION REPORT - FIXED INCOME



Run Date: 1/19/2012 2:11:44 PM

From Date: 10/1/2011 To Date: 12/31/2011

Inv. No.	Description Memo	Pool#	CUSIP Fund	Cash Maturity	Entered User ID	Traded Settled	TXN Type	Coupon Yield	Par Value Original Face	Book Value Prem / (Disc)	(Interest) Amort / (Accret)	(Gain) / Loss Settlement
			1	06/15/2012	UyenL	12/15/2011		.615	0.00	0.00	0.00	87,500.00
INTR								.838	0.00	-1,718.75	-291,885.42	0.00
								.806	0.00	0.00	0.00	293,604.17
36791	FHLMC-CALL-GILF		3134G1VH4		11/16/2011	10/07/2011	CALL	1.150	-5,000,000.00	-4,986,500.00	0.00	-13,500.00
			1	10/07/2013	UyenL	10/07/2011		1.259	0.00	13,500.00	0.00	5,000,000.00
CALL								1.150	-5,000,000.00	-4,986,500.00	0.00	-13,500.00
								1.259	0.00	13,500.00	0.00	5,000,000.00
36920	FHLMC-WF		3137EACY3		10/07/2011	10/07/2011	PURC	.750	10,000,000.00	9,997,941.67	0.00	0.00
			1	11/25/2014	UyenL	10/11/2011		.760	0.00	-2,058.33	0.00	-9,997,941.67
36923	FHLMC-GILFD		3134G2W73		10/07/2011	10/07/2011	PURC	.500	5,000,000.00	4,994,750.00	0.00	0.00
			1	10/18/2013	UyenL	10/18/2011		.553	0.00	-5,250.00	0.00	-4,994,750.00
36934	FHLMC-WF		3137EACX5		11/18/2011	11/18/2011	PURC	.375	5,000,000.00	4,984,193.75	0.00	0.00
			1	10/30/2013	UyenL	11/21/2011		.550	0.00	-15,806.25	0.00	-4,984,193.75
36937	FHLMC-CALL-UBC		3134G24Y5		11/21/2011	11/21/2011	PURC	.875	5,000,000.00	4,999,793.75	0.00	0.00
			1	11/14/2014	UyenL	11/23/2011		.884	0.00	-206.25	0.00	-4,999,793.75
36930	FHLMC-CALL-WF		3134G27A4		11/09/2011	11/09/2011	PURC	1.000	5,000,000.00	5,000,000.00	0.00	0.00
			1	11/25/2015	UyenL	11/25/2011		1.000	0.00	0.00	0.00	-5,000,000.00
36943	FHLMC-CALL-GILFD		3134G3CL2		11/28/2011	11/28/2011	PURC	1.000	5,000,000.00	4,996,550.00	0.00	0.00
			1	06/16/2015	UyenL	12/16/2011		1.020	0.00	-3,450.00	0.00	-4,996,550.00
36955	FHLMC-GILFD		3137EADA4		12/15/2011	12/15/2011	PURC	.625	5,000,000.00	4,990,750.00	0.00	0.00
			1	12/29/2014	UyenL	12/16/2011		.687	0.00	-9,250.00	0.00	-4,990,750.00
36944	FHLMC-CALL-GILFD		3134G3CY4		11/28/2011	11/28/2011	PURC	1.500	5,000,000.00	5,000,000.00	0.00	0.00
			1	12/19/2016	UyenL	12/19/2011		1.500	0.00	0.00	0.00	-5,000,000.00
36952	FHLMC-CALL-GILFD		3134G3FL9		12/14/2011	12/14/2011	PURC	.650	5,000,000.00	4,999,250.00	0.00	0.00
			1	06/27/2014	UyenL	12/27/2011		.656	0.00	-750.00	0.00	-4,999,250.00
36951	FHLMC-CALL-UBS		3134G3FC9		12/14/2011	12/14/2011	PURC	1.000	5,000,000.00	5,000,000.00	0.00	0.00
			1	09/30/2015	UyenL	12/30/2011		1.000	0.00	0.00	0.00	-5,000,000.00
PURC								.820	55,000,000.00	54,963,229.17	0.00	0.00
								.852	0.00	-36,770.83	0.00	-54,963,229.17
Inv Type: 30 FED HOME LOAN MORTGAGE CORP								.843	50,000,000.00	49,975,010.42	-291,885.42	-13,500.00
								.840	0.00	-23,270.83	0.00	-49,669,625.00
36925	FNMA-DISC-UBS		313588YW9		10/12/2011	10/12/2011	PURC	.100	10,000,000.00	9,992,666.67	0.00	0.00
			1	07/02/2012	UyenL	10/12/2011		.102	0.00	-7,333.33	0.00	-9,992,666.67

DETAIL TRANSACTION REPORT - FIXED INCOME



Run Date: 1/19/2012 2:11:44 PM

From Date: 10/1/2011 To Date: 12/31/2011

Inv. No.	Description Memo	Pool#	CUSIP Fund	Cash Maturity	Entered User ID	Traded Settled	TXN Type	Coupon Yield	Par Value Original Face	Book Value Prem / (Disc)	(Interest) Amort / (Accret)	(Gain) / Loss Settlement
36927	FNMA-DISC-CITIG		313588YW9		10/20/2011	10/20/2011	PURC	.120	9,225,000.00	9,217,128.00	0.00	0.00
			1	07/02/2012	UyenL	10/20/2011		.122	0.00	-7,872.00	0.00	-9,217,128.00
PURC								.110	19,225,000.00	19,209,794.67	0.00	0.00
								.112	0.00	-15,205.33	0.00	-19,209,794.67
Inv Type: 41 FNMA DISCOUNT NOTES								.110	19,225,000.00	19,209,794.67	0.00	0.00
								.112	0.00	-15,205.33	0.00	-19,209,794.67
36919	FHLB-DISC-CITIG		313384YW3		10/07/2011	10/07/2011	PURC	.120	14,163,000.00	14,150,300.51	0.00	0.00
			1	07/02/2012	UyenL	10/07/2011		.122	0.00	-12,699.49	0.00	-14,150,300.51
PURC								.120	14,163,000.00	14,150,300.51	0.00	0.00
								.122	0.00	-12,699.49	0.00	-14,150,300.51
Inv Type: 43 FHLB DISCOUNT NOTES								.120	14,163,000.00	14,150,300.51	0.00	0.00
								.122	0.00	-12,699.49	0.00	-14,150,300.51
36675	FHLMC-DISC-CITIG		313396NF6		10/24/2011	10/21/2011	AMRT	.270	0.00	46,456.60	0.00	0.00
			1	10/21/2011	UyenL	10/21/2011		.274	0.00	0.00	-46,456.60	0.00
36676	FHLMC-DISC-UBC		313396NV1		11/08/2011	11/04/2011	AMRT	.280	0.00	50,244.44	0.00	0.00
			1	11/04/2011	UyenL	11/04/2011		.284	0.00	0.00	-50,244.44	0.00
36822	FHLMC-DISC-UBC		313396PK3		11/21/2011	11/18/2011	AMRT	.140	0.00	15,357.00	0.00	0.00
			1	11/18/2011	UyenL	11/18/2011		.142	0.00	0.00	-15,357.00	0.00
AMRT								.232	0.00	112,058.04	0.00	0.00
								.236	0.00	0.00	-112,058.04	0.00
36675	FHLMC-DISC-CITIG		313396NF6		10/24/2011	10/21/2011	MAT	.270	-20,046,000.00	-20,046,000.00	0.00	0.00
			1	10/21/2011	UyenL	10/21/2011		.274	0.00	0.00	0.00	20,046,000.00
36676	FHLMC-DISC-UBC		313396NV1		11/08/2011	11/04/2011	MAT	.280	-20,000,000.00	-20,000,000.00	0.00	0.00
			1	11/04/2011	UyenL	11/04/2011		.284	0.00	0.00	0.00	20,000,000.00
36822	FHLMC-DISC-UBC		313396PK3		11/21/2011	11/18/2011	MAT	.140	-18,453,000.00	-18,453,000.00	0.00	0.00
			1	11/18/2011	UyenL	11/18/2011		.142	0.00	0.00	0.00	18,453,000.00
MAT								.232	-58,499,000.00	-58,499,000.00	0.00	0.00
								.236	0.00	0.00	0.00	58,499,000.00
Inv Type: 44 FHLMC DISCOUNT NOTES								.232	-58,499,000.00	-58,386,941.96	0.00	0.00
								.236	0.00	0.00	-112,058.04	58,499,000.00
35913	MTN-GE CAPITAL CORP		36967HAD9		12/12/2011	12/09/2011	AMRT	3.000	0.00	71,750.00	0.00	0.00

DETAIL TRANSACTION REPORT - FIXED INCOME



Run Date: 1/19/2012 2:11:44 PM

From Date: 10/1/2011 To Date: 12/31/2011

Inv. No.	Description Memo	Pool#	CUSIP Fund	Cash Maturity	Entered User ID	Traded Settled	TXN Type	Coupon Yield	Par Value Original Face	Book Value Prem / (Disc)	(Interest) Amort / (Accret)	(Gain) / Loss Settlement
			1	12/09/2011	UyenL	12/09/2011		3.101	0.00	0.00	-71,750.00	0.00
AMRT								3.000	0.00	71,750.00	0.00	0.00
								3.101	0.00	0.00	-71,750.00	0.00
35913	MTN-GE CAPITAL CORP		36967HAD9		12/12/2011	12/09/2011	MAT	3.000	-25,000,000.00	-25,000,000.00	-375,000.00	0.00
			1	12/09/2011	UyenL	12/09/2011		3.101	0.00	0.00	0.00	25,375,000.00
MAT								3.000	-25,000,000.00	-25,000,000.00	-375,000.00	0.00
								3.101	0.00	0.00	0.00	25,375,000.00
Inv Type: 47 CORP MEDIUM TERM NOTE								3.000	-25,000,000.00	-24,928,250.00	-375,000.00	0.00
								3.101	0.00	0.00	-71,750.00	25,375,000.00
36834	NCD-UBOC-UBC		90527MOP4		10/11/2011	10/07/2011	MAT	.310	-20,000,000.00	-20,000,000.00	-27,727.78	0.00
			1	10/07/2011	UyenL	10/07/2011		.310	0.00	0.00	0.00	20,027,727.78
36870	NCD-UBOC-UBC		90527MRX6		12/05/2011	12/02/2011	MAT	.230	-20,000,000.00	-20,000,000.00	-20,700.00	0.00
			1	12/02/2011	UyenL	12/02/2011		.230	0.00	0.00	0.00	20,020,700.00
MAT								.270	-40,000,000.00	-40,000,000.00	-48,427.78	0.00
								.270	0.00	0.00	0.00	40,048,427.78
36921	NCD-UBOC-UBC		90527MUR5		10/07/2011	10/07/2011	PURC	.270	10,000,000.00	10,000,000.00	0.00	0.00
			1	02/01/2012	UyenL	10/11/2011		.270	0.00	0.00	0.00	-10,000,000.00
36948	NCD-UBOC-UBC		90527MXB7		12/08/2011	12/08/2011	PURC	.250	15,000,000.00	15,000,000.00	0.00	0.00
			1	02/01/2012	UyenL	12/09/2011		.250	0.00	0.00	0.00	-15,000,000.00
36954	NCD-UBOC-UBC		90527MXR2		12/15/2011	12/15/2011	PURC	.250	15,000,000.00	15,000,000.00	0.00	0.00
			1	02/01/2012	UyenL	12/16/2011		.250	0.00	0.00	0.00	-15,000,000.00
PURC								.255	40,000,000.00	40,000,000.00	0.00	0.00
								.255	0.00	0.00	0.00	-40,000,000.00
Inv Type: 71 NEGOTIABLE CERT OF DEPOSIT								.263	0.00	0.00	-48,427.78	0.00
								.263	0.00	0.00	0.00	48,427.78
36899	CP-DISC-UBS FIN DEL		90262DX34		10/04/2011	10/03/2011	AMRT	.150	0.00	800.00	0.00	0.00
			1	10/03/2011	UyenL	10/03/2011		.153	0.00	0.00	-800.00	0.00
36890	CP-DISC-TOYOTA-TOY		89233HXC3		11/22/2011	10/12/2011	AMRT	.210	0.00	2,450.00	0.00	0.00
			1	10/12/2011	UyenL	10/12/2011		.214	0.00	0.00	-2,450.00	0.00
36900	CP-DISC-TOYOTA-TOY		89233HXQ2		10/25/2011	10/24/2011	AMRT	.200	0.00	1,767.26	0.00	0.00
			1	10/24/2011	UyenL	10/24/2011		.203	0.00	0.00	-1,767.26	0.00
36917	CP-DISC-TOYOTA-TOY		89233HY73		11/08/2011	11/07/2011	AMRT	.120	0.00	720.00	0.00	0.00



DETAIL TRANSACTION REPORT - FIXED INCOME



Run Date: 1/19/2012 2:11:44 PM

From Date: 10/1/2011 To Date: 12/31/2011

Inv. No.	Description Memo	Pool#	CUSIP Fund	Cash Maturity	Entered User ID	Traded Settled	TXN Type	Coupon Yield	Par Value Original Face	Book Value Prem / (Disc)	(Interest) Amort / (Accret)	(Gain) / Loss Settlement
			1	11/07/2011	UyenL	11/07/2011		.122	0.00	0.00	-720.00	0.00
36931	CP-DISC-UBS FIN DEL		90262DYM1		11/23/2011	11/21/2011	AMRT	.070	0.00	186.67	0.00	0.00
			1	11/21/2011	UyenL	11/21/2011		.071	0.00	0.00	-186.67	0.00
36897	CP-DISC-TOYOTA-TOY		89233HZG2		12/19/2011	12/16/2011	AMRT	.290	0.00	8,707.83	0.00	0.00
			1	12/16/2011	UyenL	12/16/2011		.295	0.00	0.00	-8,707.83	0.00
36947	CP-DISC-HSBC FIN CO		4042F1ZW2		01/03/2012	12/30/2011	AMRT	.120	0.00	447.33	0.00	0.00
			1	12/30/2011	UyenL	12/30/2011		.122	0.00	0.00	-447.33	0.00
AMRT								.158	0.00	15,079.09	0.00	0.00
								.161	0.00	0.00	-15,079.09	0.00
36899	CP-DISC-UBS FIN DEL		90262DX34		10/04/2011	10/03/2011	MAT	.150	-6,000,000.00	-6,000,000.00	0.00	0.00
			1	10/03/2011	UyenL	10/03/2011		.153	0.00	0.00	0.00	6,000,000.00
36890	CP-DISC-TOYOTA-TOY		89233HXC3		11/22/2011	10/12/2011	MAT	.210	-6,000,000.00	-6,000,000.00	0.00	0.00
			1	10/12/2011	UyenL	10/12/2011		.214	0.00	0.00	0.00	6,000,000.00
36900	CP-DISC-TOYOTA-TOY		89233HXQ2		10/25/2011	10/24/2011	MAT	.200	-6,002,000.00	-6,002,000.00	0.00	0.00
			1	10/24/2011	UyenL	10/24/2011		.203	0.00	0.00	0.00	6,002,000.00
36917	CP-DISC-TOYOTA-TOY		89233HY73		11/08/2011	11/07/2011	MAT	.120	-5,400,000.00	-5,400,000.00	0.00	0.00
			1	11/07/2011	UyenL	11/07/2011		.122	0.00	0.00	0.00	5,400,000.00
36931	CP-DISC-UBS FIN DEL		90262DYM1		11/23/2011	11/21/2011	MAT	.070	-16,000,000.00	-16,000,000.00	0.00	0.00
			1	11/21/2011	UyenL	11/21/2011		.071	0.00	0.00	0.00	16,000,000.00
36897	CP-DISC-TOYOTA-TOY		89233HZG2		12/19/2011	12/16/2011	MAT	.290	-10,009,000.00	-10,009,000.00	0.00	0.00
			1	12/16/2011	UyenL	12/16/2011		.295	0.00	0.00	0.00	10,009,000.00
36947	CP-DISC-HSBC FIN CO		4042F1ZW2		01/03/2012	12/30/2011	MAT	.120	-6,100,000.00	-6,100,000.00	0.00	0.00
			1	12/30/2011	UyenL	12/30/2011		.122	0.00	0.00	0.00	6,100,000.00
MAT								.158	-55,511,000.00	-55,511,000.00	0.00	0.00
								.161	0.00	0.00	0.00	55,511,000.00
36928	CP-DISC-TOYOTA-TOY		89233GB13		10/21/2011	10/21/2011	PURC	.260	6,243,000.00	6,238,355.90	0.00	0.00
			1	02/01/2012	UyenL	10/21/2011		.265	0.00	-4,644.10	0.00	-6,238,355.90
36929	CP-DISC-HSBC FIN CO		4042F0B18		10/31/2011	10/31/2011	PURC	.390	8,227,000.00	8,218,711.30	0.00	0.00
			1	02/01/2012	UyenL	10/31/2011		.397	0.00	-8,288.70	0.00	-8,218,711.30
36931	CP-DISC-UBS FIN DEL		90262DYM1		11/15/2011	11/15/2011	PURC	.070	16,000,000.00	15,999,813.33	0.00	0.00
			1	11/21/2011	UyenL	11/15/2011		.071	0.00	-186.67	0.00	-15,999,813.33
36932	CP-DISC-UBS FIN DEL		90262CAJ6		11/18/2011	11/18/2011	PURC	.300	6,572,000.00	6,568,659.23	0.00	0.00
			1	01/18/2012	UyenL	11/18/2011		.305	0.00	-3,340.77	0.00	-6,568,659.23
36947	CP-DISC-HSBC FIN CO		4042F1ZW2		12/08/2011	12/08/2011	PURC	.120	6,100,000.00	6,099,552.67	0.00	0.00

DETAIL TRANSACTION REPORT - FIXED INCOME



Run Date: 1/19/2012 2:11:44 PM

From Date: 10/1/2011 To Date: 12/31/2011

Inv. No.	Description Memo	Pool#	CUSIP Fund	Cash Maturity	Entered User ID	Traded Settled	TXN Type	Coupon Yield	Par Value Original Face	Book Value Prem / (Disc)	(Interest) Amort / (Accret)	(Gain) / Loss Settlement
			1	12/30/2011	UyenL	12/08/2011		.122	0.00	-447.33	0.00	-6,099,552.67
36949	CP-DISC-HSBC FIN CO		4042F0BNO			12/12/2011	12/09/2011	PURC	.360	12,855,000.00	12,845,358.75	0.00
			1	02/22/2012	UyenL	12/09/2011		.366	0.00	-9,641.25	0.00	-12,845,358.75
36950	CP-DISC-HSBC FIN CO		4042F0B18			12/14/2011	12/14/2011	PURC	.280	11,926,000.00	11,921,454.87	0.00
			1	02/01/2012	UyenL	12/14/2011		.285	0.00	-4,545.13	0.00	-11,921,454.87
PURC								.245	67,923,000.00	67,891,906.05	0.00	0.00
								.249	0.00	-31,093.95	0.00	-67,891,906.05
Inv Type: 82 COMMERCIAL PAPER, DISCOUNT BAS								.191	12,412,000.00	12,395,985.14	0.00	0.00
								.194	0.00	-31,093.95	-15,079.09	-12,380,906.05
36510	BLACKROCK LIQUIDITY		09248U700	10/03/2011	10/04/2011	10/03/2011	INTR	.060	0.00	0.00	-8.10	0.00
			1	06/30/2012	UyenL	10/03/2011		.060	0.00	0.00	0.00	8.10
36511	MORGAN STANLEY INST		61747C707	10/03/2011	10/04/2011	10/03/2011	INTR	.060	0.00	0.00	-5.35	0.00
			1	06/30/2012	UyenL	10/03/2011		.060	0.00	0.00	0.00	5.35
36512	FEDERATED GOVT OBLI		VP6000104	10/03/2011	10/04/2011	10/03/2011	INTR	.050	0.00	0.00	-6.54	0.00
			1	06/30/2012	UyenL	10/03/2011		.050	0.00	0.00	0.00	6.54
36512	FEDERATED GOVT OBLI		VP6000104	11/01/2011	11/03/2011	11/01/2011	INTR	.050	0.00	0.00	-5.49	0.00
			1	06/30/2012	UyenL	11/01/2011		.050	0.00	0.00	0.00	5.49
36510	BLACKROCK LIQUIDITY		09248U700	11/02/2011	11/03/2011	11/02/2011	INTR	.015	0.00	0.00	-8.37	0.00
			1	06/30/2012	UyenL	11/02/2011		.015	0.00	0.00	0.00	8.37
36511	MORGAN STANLEY INST		61747C707	11/02/2011	11/03/2011	11/02/2011	INTR	.030	0.00	0.00	-8.32	0.00
			1	06/30/2012	UyenL	11/02/2011		.030	0.00	0.00	0.00	8.32
36512	FEDERATED GOVT OBLI		VP6000104	12/01/2011	12/05/2011	12/01/2011	INTR	.010	0.00	0.00	-4.50	0.00
			1	06/30/2012	UyenL	12/01/2011		.010	0.00	0.00	0.00	4.50
36510	BLACKROCK LIQUIDITY		09248U700	12/02/2011	12/05/2011	12/02/2011	INTR	.010	0.00	0.00	-10.68	0.00
			1	06/30/2012	UyenL	12/02/2011		.010	0.00	0.00	0.00	10.68
36511	MORGAN STANLEY INST		61747C707	12/02/2011	12/05/2011	12/02/2011	INTR	.030	0.00	0.00	-15.85	0.00
			1	06/30/2012	UyenL	12/02/2011		.030	0.00	0.00	0.00	15.85
INTR								.034	0.00	0.00	-73.20	0.00
								.034	0.00	0.00	0.00	73.20
Inv Type: 97 WFB MONEY MARKET FUND								.034	0.00	0.00	-73.20	0.00
								.034	0.00	0.00	0.00	73.20
32936	STATE INVESTMT POOL				10/03/2011	10/03/2011	PURC	.381	20,570,000.00	20,570,000.00	0.00	0.00
			1	06/30/2012	UyenL	10/03/2011		.381	0.00	0.00	0.00	-20,570,000.00
32936	STATE INVESTMT POOL				10/14/2011	10/14/2011	PURC	.381	43,460.17	43,460.17	0.00	0.00

DETAIL TRANSACTION REPORT - FIXED INCOME



Run Date: 1/19/2012 2:11:44 PM

From Date: 10/1/2011 To Date: 12/31/2011

Inv. No.	Description Memo	Pool#	CUSIP Fund	Cash Maturity	Entered User ID	Traded Settled	TXN Type	Coupon Yield	Par Value Original Face	Book Value Prem / (Disc)	(Interest) Amort / (Accret)	(Gain) / Loss Settlement	
			1	06/30/2012	UyenL	10/14/2011		.381	0.00	0.00	0.00	-43,460.17	
33658	STATE INVESTMT POOL				UyenL	10/14/2011	10/14/2011	PURC	.381	24,443.76	24,443.76	0.00	0.00
			1	06/30/2012	UyenL	10/14/2011		.381	0.00	0.00	0.00	-24,443.76	
32936	STATE INVESTMT POOL				UyenL	10/28/2011	10/28/2011	PURC	.381	4,733,000.00	4,733,000.00	0.00	0.00
			1	06/30/2012	UyenL	10/28/2011		.381	0.00	0.00	0.00	-4,733,000.00	
32936	STATE INVESTMT POOL				UyenL	11/15/2011	11/15/2011	PURC	.381	8,743,000.00	8,743,000.00	0.00	0.00
			1	06/30/2012	UyenL	11/15/2011		.381	0.00	0.00	0.00	-8,743,000.00	
32936	STATE INVESTMT POOL				UyenL	11/23/2011	11/23/2011	PURC	.381	3,600,000.00	3,600,000.00	0.00	0.00
			1	06/30/2012	UyenL	11/23/2011		.381	0.00	0.00	0.00	-3,600,000.00	
32936	STATE INVESTMT POOL				UyenL	11/28/2011	11/28/2011	PURC	.381	9,119,000.00	9,119,000.00	0.00	0.00
			1	06/30/2012	UyenL	11/28/2011		.381	0.00	0.00	0.00	-9,119,000.00	
33658	STATE INVESTMT POOL				UyenL	12/16/2011	12/16/2011	PURC	.381	41,580,000.00	41,580,000.00	0.00	0.00
			1	06/30/2012	UyenL	12/16/2011		.381	0.00	0.00	0.00	-41,580,000.00	
32936	STATE INVESTMT POOL				UyenL	12/21/2011	12/21/2011	PURC	.381	7,293,000.00	7,293,000.00	0.00	0.00
			1	06/30/2012	UyenL	12/21/2011		.381	0.00	0.00	0.00	-7,293,000.00	
32936	STATE INVESTMT POOL				UyenL	12/22/2011	12/23/2011	PURC	.381	13,300,000.00	13,300,000.00	0.00	0.00
			1	06/30/2012	UyenL	12/23/2011		.381	0.00	0.00	0.00	-13,300,000.00	
PURC								.381	109,005,903.93	109,005,903.93	0.00	0.00	
								.381	0.00	0.00	0.00	-109,005,903.93	
32936	STATE INVESTMT POOL				UyenL	10/04/2011	10/04/2011	PSAL	.381	-625,000.00	-625,000.00	0.00	0.00
			1	06/30/2012	UyenL	10/04/2011		.381	0.00	0.00	0.00	625,000.00	
32936	STATE INVESTMT POOL				UyenL	10/05/2011	10/05/2011	PSAL	.381	-4,412,000.00	-4,412,000.00	0.00	0.00
			1	06/30/2012	UyenL	10/05/2011		.381	0.00	0.00	0.00	4,412,000.00	
32936	STATE INVESTMT POOL				UyenL	10/06/2011	10/06/2011	PSAL	.381	-674,000.00	-674,000.00	0.00	0.00
			1	06/30/2012	UyenL	10/06/2011		.381	0.00	0.00	0.00	674,000.00	
32936	STATE INVESTMT POOL				UyenL	10/13/2011	10/13/2011	PSAL	.381	-1,042,000.00	-1,042,000.00	0.00	0.00
			1	06/30/2012	UyenL	10/13/2011		.381	0.00	0.00	0.00	1,042,000.00	
32936	STATE INVESTMT POOL				UyenL	10/17/2011	10/17/2011	PSAL	.381	-43,460.17	-43,460.17	0.00	0.00
			1	06/30/2012	UyenL	10/17/2011		.381	0.00	0.00	0.00	43,460.17	
33658	STATE INVESTMT POOL				UyenL	10/17/2011	10/17/2011	PSAL	.381	-24,443.76	-24,443.76	0.00	0.00
			1	06/30/2012	UyenL	10/17/2011		.381	0.00	0.00	0.00	24,443.76	
32936	STATE INVESTMT POOL				UyenL	10/18/2011	10/18/2011	PSAL	.381	-1,026,000.00	-1,026,000.00	0.00	0.00
			1	06/30/2012	UyenL	10/18/2011		.381	0.00	0.00	0.00	1,026,000.00	
32936	STATE INVESTMT POOL				UyenL	11/03/2011	11/03/2011	PSAL	.381	-175,000.00	-175,000.00	0.00	0.00
			1	06/30/2012	UyenL	11/03/2011		.381	0.00	0.00	0.00	175,000.00	

# DETAIL TRANSACTION REPORT - FIXED INCOME



Run Date: 1/19/2012 2:11:44 PM

From Date: 10/1/2011 To Date: 12/31/2011

Inv. No.	Description Memo	Pool#	CUSIP Fund	Cash Maturity	Entered User ID	Traded Settled	TXN Type	Coupon Yield	Par Value Original Face	Book Value Prem / (Disc)	(Interest) Amort / (Accret)	(Gain) / Loss Settlement
32936	STATE INVESTMT POOL				11/04/2011	11/04/2011	PSAL	.381	-5,636,000.00	-5,636,000.00	0.00	0.00
			1	06/30/2012	UyenL	11/04/2011		.381	0.00	0.00	0.00	5,636,000.00
32936	STATE INVESTMT POOL				11/07/2011	11/07/2011	PSAL	.381	-1,601,000.00	-1,601,000.00	0.00	0.00
			1	06/30/2012	UyenL	11/07/2011		.381	0.00	0.00	0.00	1,601,000.00
32936	STATE INVESTMT POOL				11/08/2011	11/08/2011	PSAL	.381	-7,401,000.00	-7,401,000.00	0.00	0.00
			1	06/30/2012	UyenL	11/08/2011		.381	0.00	0.00	0.00	7,401,000.00
32936	STATE INVESTMT POOL				11/10/2011	11/10/2011	PSAL	.381	-2,943,000.00	-2,943,000.00	0.00	0.00
			1	06/30/2012	UyenL	11/10/2011		.381	0.00	0.00	0.00	2,943,000.00
32936	STATE INVESTMT POOL				11/30/2011	11/30/2011	PSAL	.381	-4,650,000.00	-4,650,000.00	0.00	0.00
			1	06/30/2012	UyenL	11/30/2011		.381	0.00	0.00	0.00	4,650,000.00
32936	STATE INVESTMT POOL				12/02/2011	12/02/2011	PSAL	.381	-500,000.00	-500,000.00	0.00	0.00
			1	06/30/2012	UyenL	12/02/2011		.381	0.00	0.00	0.00	500,000.00
32936	STATE INVESTMT POOL				12/05/2011	12/05/2011	PSAL	.381	-2,400,000.00	-2,400,000.00	0.00	0.00
			1	06/30/2012	UyenL	12/05/2011		.381	0.00	0.00	0.00	2,400,000.00
32936	STATE INVESTMT POOL				12/12/2011	12/12/2011	PSAL	.381	-200,000.00	-200,000.00	0.00	0.00
			1	06/30/2012	UyenL	12/12/2011		.381	0.00	0.00	0.00	200,000.00
32936	STATE INVESTMT POOL				12/15/2011	12/15/2011	PSAL	.381	-5,700,000.00	-5,700,000.00	0.00	0.00
			1	06/30/2012	UyenL	12/15/2011		.381	0.00	0.00	0.00	5,700,000.00
32936	STATE INVESTMT POOL				12/19/2011	12/19/2011	PSAL	.381	-8,740,000.00	-8,740,000.00	0.00	0.00
			1	06/30/2012	UyenL	12/19/2011		.381	0.00	0.00	0.00	8,740,000.00
33658	STATE INVESTMT POOL				12/20/2011	12/20/2011	PSAL	.381	-430,000.00	-430,000.00	0.00	0.00
			1	06/30/2012	UyenL	12/20/2011		.381	0.00	0.00	0.00	430,000.00
32936	STATE INVESTMT POOL				01/03/2012	12/27/2011	PSAL	.381	-150,000.00	-150,000.00	0.00	0.00
			1	06/30/2012	UyenL	12/27/2011		.381	0.00	0.00	0.00	150,000.00
32936	STATE INVESTMT POOL				01/03/2012	12/30/2011	PSAL	.381	-8,000,000.00	-8,000,000.00	0.00	0.00
			1	06/30/2012	UyenL	12/30/2011		.381	0.00	0.00	0.00	8,000,000.00
PSAL								.381	-56,372,903.93	-56,372,903.93	0.00	0.00
								.381	0.00	0.00	0.00	56,372,903.93
32936	STATE INVESTMT POOL			12/31/2011	01/17/2012	12/31/2011	INTR	.381	0.00	0.00	-39,291.74	0.00
			1	06/30/2012	UyenL	12/31/2011		.381	0.00	0.00	0.00	39,291.74
33658	STATE INVESTMT POOL			12/31/2011	01/17/2012	12/31/2011	INTR	.381	0.00	0.00	-6,982.95	0.00
			1	06/30/2012	UyenL	12/31/2011		.381	0.00	0.00	0.00	6,982.95
INTR								.381	0.00	0.00	-46,274.69	0.00
								.381	0.00	0.00	0.00	46,274.69

DETAIL TRANSACTION REPORT - FIXED INCOME



Run Date: 1/19/2012 2:11:44 PM

From Date: 10/1/2011 To Date: 12/31/2011

Inv. No.	Description Memo	Pool#	CUSIP Fund	Cash Maturity	Entered User ID	Traded Settled	TXN Type	Coupon Yield	Par Value Original Face	Book Value Prem / (Disc)	(Interest) Amort / (Accret)	(Gain) / Loss Settlement
Inv Type: 99 PASSBOOK & STATE POOL								.381	52,633,000.00	52,633,000.00	-46,274.69	0.00
								.381	0.00	0.00	0.00	-52,586,725.31
<b>Subtotal</b>								.635	93,429,000.00	93,582,582.02	-1,974,856.92	-82,482.90
								.670	0.00	-40,510.31	-202,087.13	-91,323,155.07
<b>Fund: 55 Series 2008B-RDA Tax Allocation</b>												
35894	Series 2008 B-RDA T				10/14/2011	10/14/2011	PURC	.381	12,142.83	12,142.83	0.00	0.00
			55	06/30/2012	UyenL	10/14/2011		.381	0.00	0.00	0.00	-12,142.83
PURC								.381	12,142.83	12,142.83	0.00	0.00
								.381	0.00	0.00	0.00	-12,142.83
35894	Series 2008 B-RDA T				12/31/2011	01/17/2012	INTR	.381	0.00	0.00	-12,164.78	0.00
			55	06/30/2012	UyenL	12/31/2011		.381	0.00	0.00	0.00	12,164.78
INTR								.381	0.00	0.00	-12,164.78	0.00
								.381	0.00	0.00	0.00	12,164.78
Inv Type: 99 PASSBOOK & STATE POOL								.381	12,142.83	12,142.83	-12,164.78	0.00
								.381	0.00	0.00	0.00	21.95
<b>Subtotal</b>								.381	12,142.83	12,142.83	-12,164.78	0.00
								.381	0.00	0.00	0.00	21.95
<b>Grand Total</b>								.632	93,441,142.83	93,594,724.85	-1,987,021.70	-82,482.90
Count 160								.667	0.00	-40,510.31	-202,087.13	-91,323,133.12



Run Date: 1/19/2012 2:11:44 PM

SUMMARY

From Date: 10/1/2011 To Date: 12/31/2011

Assets	Yield	Par Value	Original Face	Book Value	Prem / (Disc)	Amort / (Accret)	(Interest)	(Gain) / Loss	Settlement
AMRT	.695	0.00	0.00	202,087.13	0.00	-202,087.13	0.00	0.00	0.00
CALL	1.251	-17,505,000.00	0.00	-17,422,517.10	82,482.90	0.00	0.00	-82,482.90	17,505,000.00
INTR	.790	0.00	0.00	-7,994.80	0.00	0.00	-1,208,593.92	0.00	1,216,588.72
MAT	.873	-209,010,000.00	0.00	-209,010,000.00	0.00	0.00	-778,427.78	0.00	209,788,427.78
PSAL	.381	-56,372,903.93	0.00	-56,372,903.93	0.00	0.00	0.00	0.00	56,372,903.93
PURC	.426	376,329,046.76	0.00	376,206,053.55	-122,993.21	0.00	0.00	0.00	-376,206,053.55
Totals :	.667	93,441,142.83	0.00	93,594,724.85	-40,510.31	-202,087.13	-1,987,021.70	-82,482.90	-91,323,133.12

CITY OF SAN JOSE  
 TREASURY DIVISION

BROKER PURCHASE DISTRIBUTION  
 10/01/11 THROUGH 12/31/11

PAGE: 1  
 RUN: 01/19/12 14:34:16

ALL FUNDS

CODE	BROKER NAME	TRANSACTIONS	ASSETS	LIABILITIES	(ABSOLUTE) TOTAL
132	CITIGROUP GLOBAL MARKETS INC.	3	29,369,236.84		29,369,236.84
186	GILFORD SECURITIES INC.	7	34,978,107.64		34,978,107.64
325	J P MORGAN SECURITIES INC	4	39,085,077.59		39,085,077.59
415	STATE INVESTMENT POOL	11	109,018,046.76		109,018,046.76
436	TOYOTA FINANCIAL SERVICES	1	6,238,355.90		6,238,355.90
441	UBS FINANCIAL SERVICES INC.	6	47,535,862.15		47,535,862.15
445	UNION BANK OF CALIFORNIA	7	64,997,743.75		64,997,743.75
451	WELLS FARGO BANK - INVESTMENTS	6	44,983,622.92		44,983,622.92
	GRAND TOTALS	45	376,206,053.55		376,206,053.55